

alliston

AT HOME



EMERSON bungalow

features

- Open Concept Living
- Central Kitchen Layout
- 11ft Ceilings in Great Room & Entry
- Side Drive Triple Car Garage
- Stainless Steel Appliance Package
- Quartz Countertops Throughout
- Generous Rear Deck
- Walk-in Kitchen Pantry
- Flex Room
- Mudroom w/ Laundry
- Fireplace in Great Room
- Comfortable WIC
- Spacious 5-piece Ensuite
- Oversized Windows

1,556 sq. ft.

1 Bed

1.5 Bath



CIMARRON

587-757-8503

cimarron@allistongroup.ca



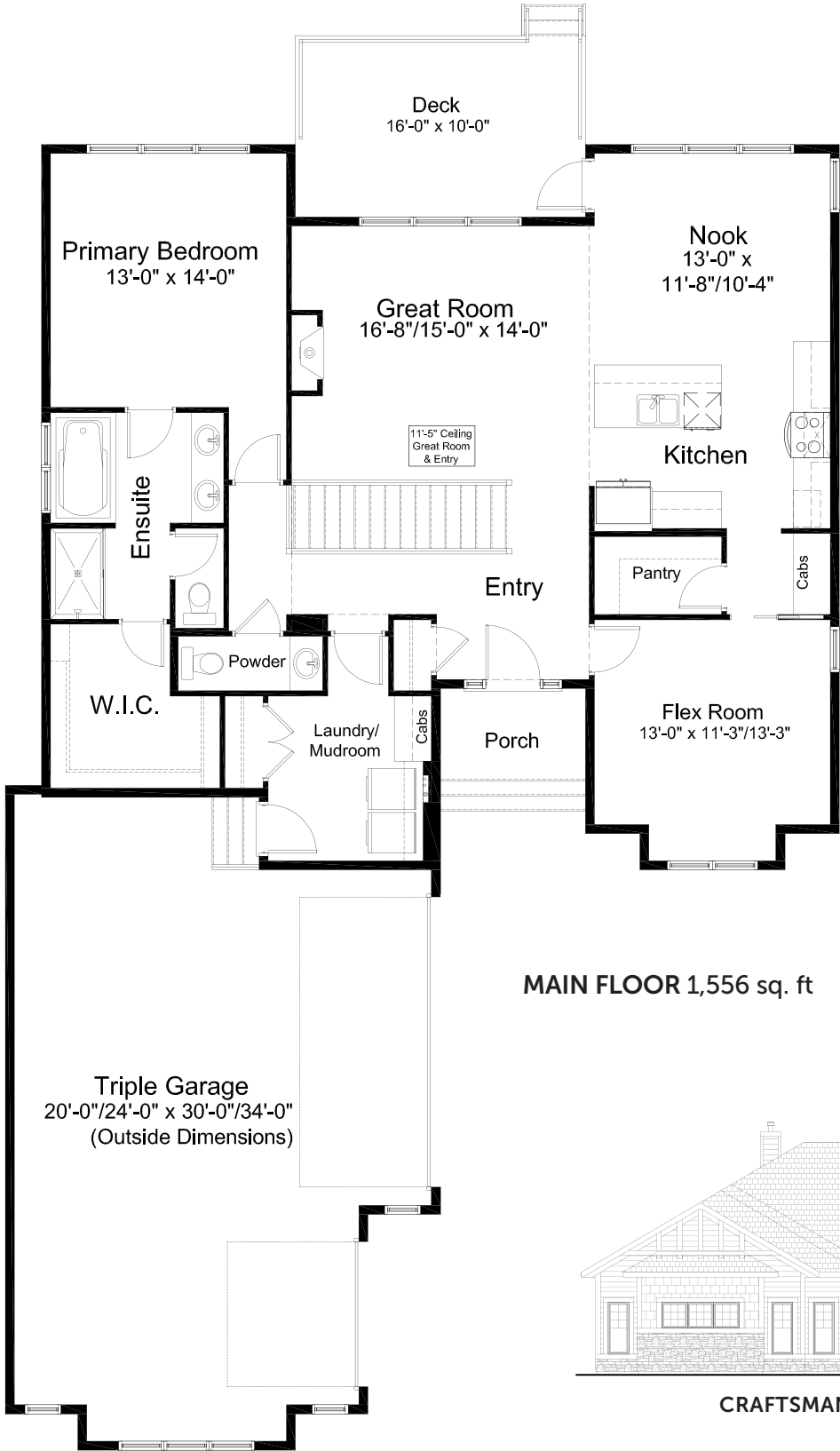
EMERSON BUNGALOW

1 Bed

1.5 Bath

1,556 sq. ft.

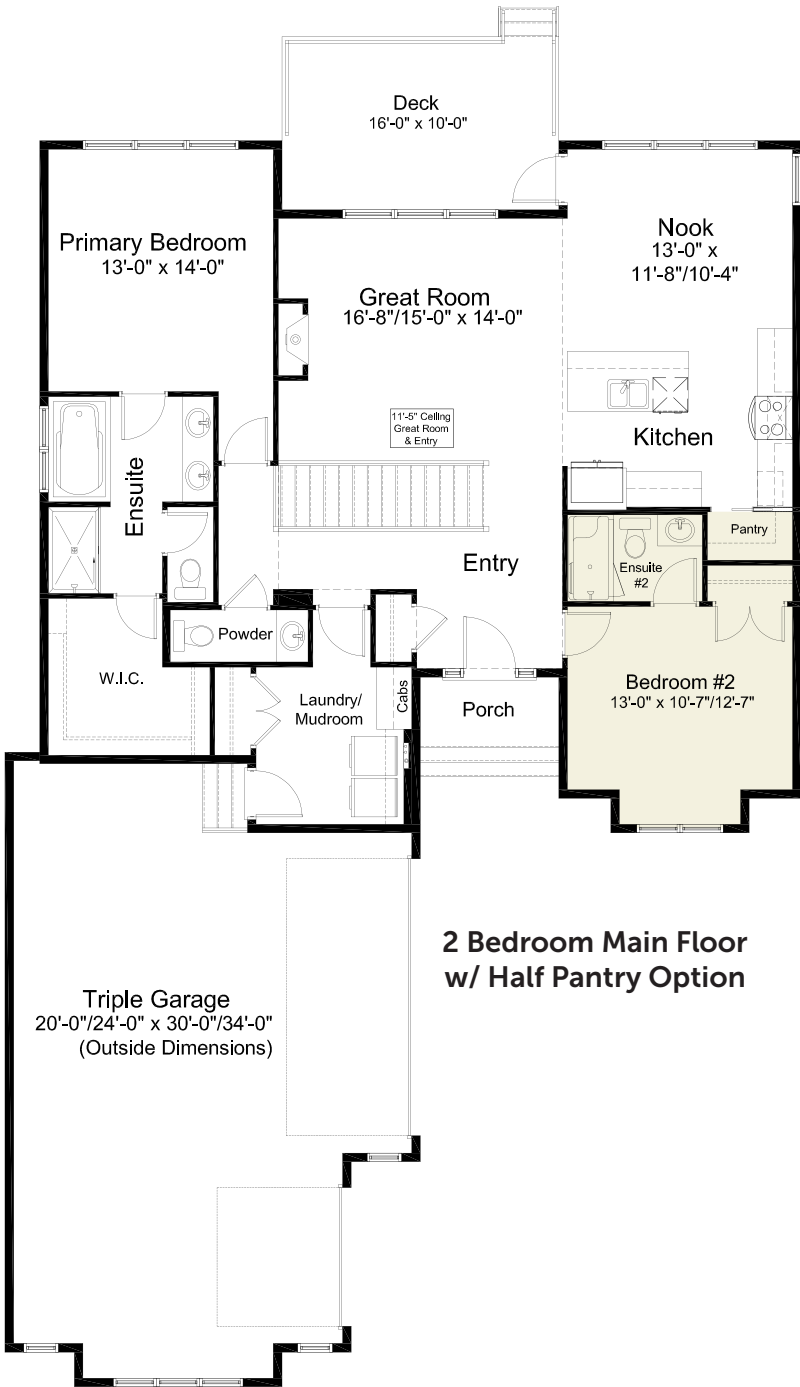
standard plan



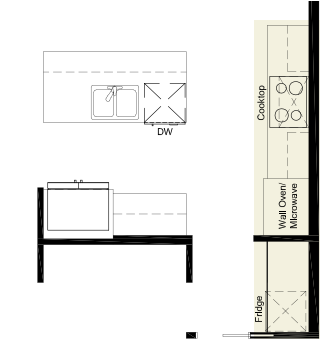
CRAFTSMAN ELEVATION



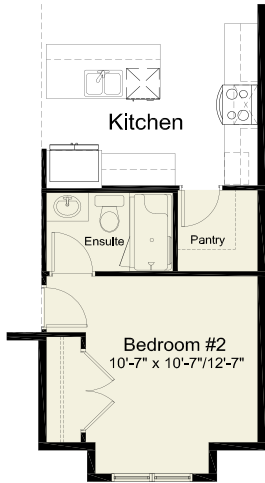
pre-planned options



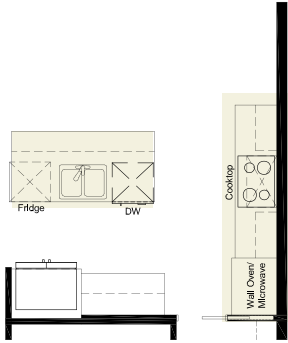
2 Bedroom Main Floor w/ Half Pantry Option



Gourmet Kitchen Option



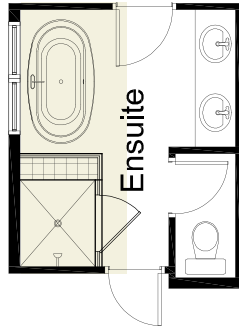
2 Bedroom Main Floor w/ Full Pantry Option



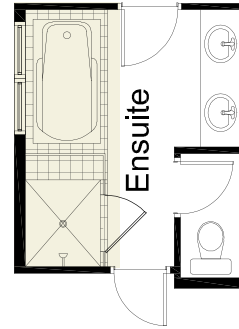
Gourmet Kitchen w/ 2 Bedroom Main Floor Option



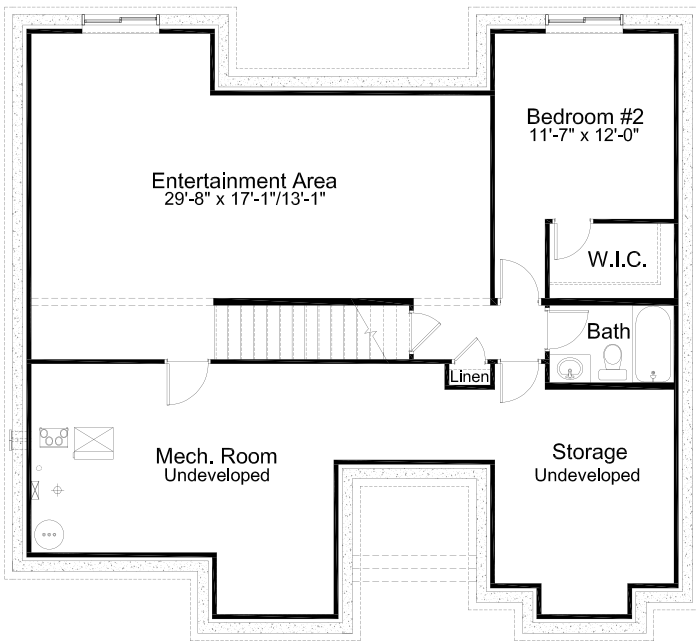
pre-planned options



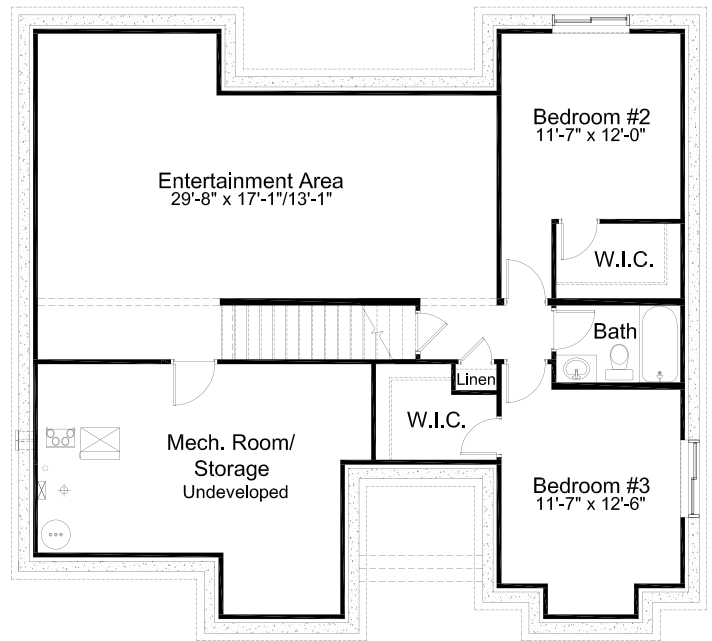
Spa Option #1
replaces drop-in tub with
free-standing tub



Spa Option #2
tiled deck with drop-in tub



**1 Bedroom Basement
Development Option**
886 sq. ft. of developed area



**2 Bedroom Basement
Development Option**
1,075 sq. ft. of developed area

Edited: January 12, 2024

The builder reserves the right to modify or change plans, specifications, features and prices without notice. Materials may be substituted with equivalent or better at the builder's sole discretion. All dimensions and sizes are approximate and are based on architectural measurements. As reverse, mirrored and/or flipped plans occur throughout the building, please see architectural plans if material to your decision to purchase. Renderings, furnishings and equipment shown are an artist's conception and are intended as a general reference only. Please see disclosure statement for specific offering details. E. & O.E.