

BOWERY

4 Bed | 2.5 Bath

- Open Concept Living Area
- Central Kitchen Layout
- Luxury Vinyl Plank Flooring
- Luxury Vinyl Tile
- Stainless Steel Appliance Package
- Quartz Countertops Throughout
- Open to Above/Below Staircase
- Spacious Primary Bedroom WIC
- Primary Bedroom Ensuite
- Veranda or Porch in Front Entry
- Main Floor Washer & Dryer
- Private Rear Powder Room

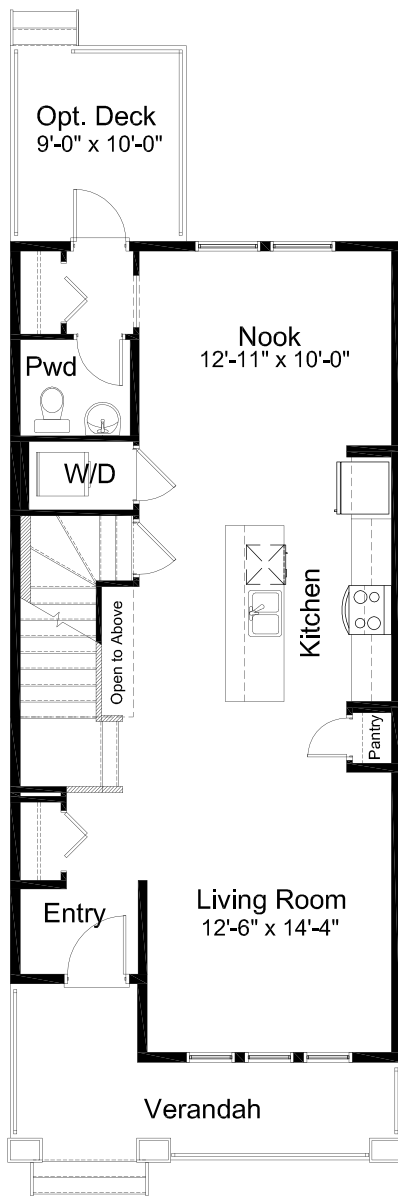




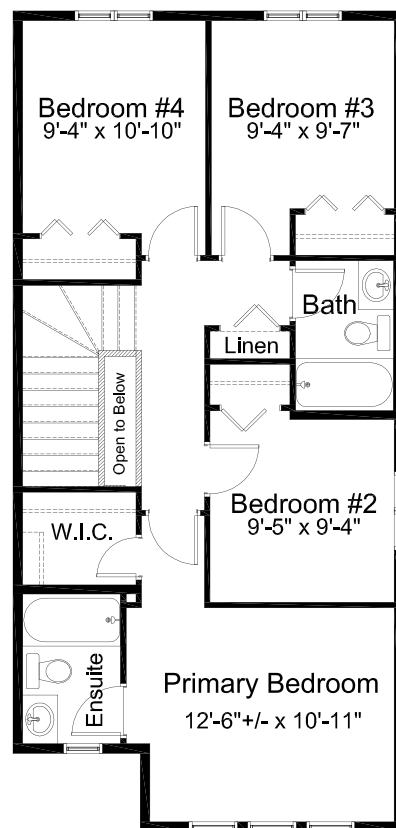
Craftsman w/ Verandah



Craftsman w/ Porch



MAIN FLOOR 814 sq. ft.



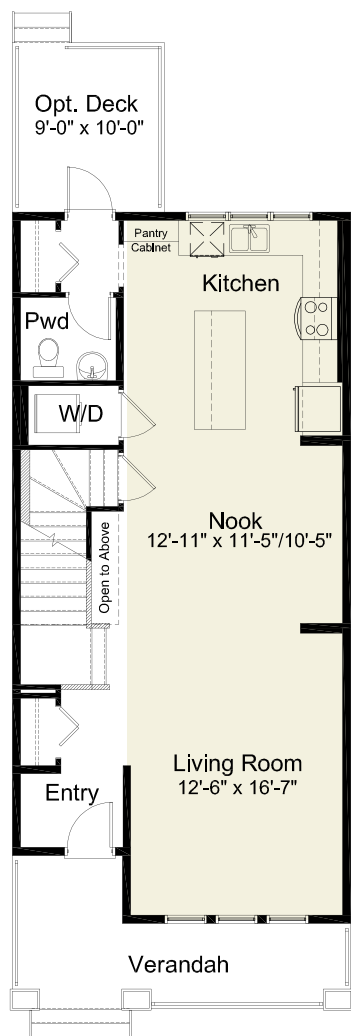
UPPER FLOOR 803 sq. ft.

NOTES

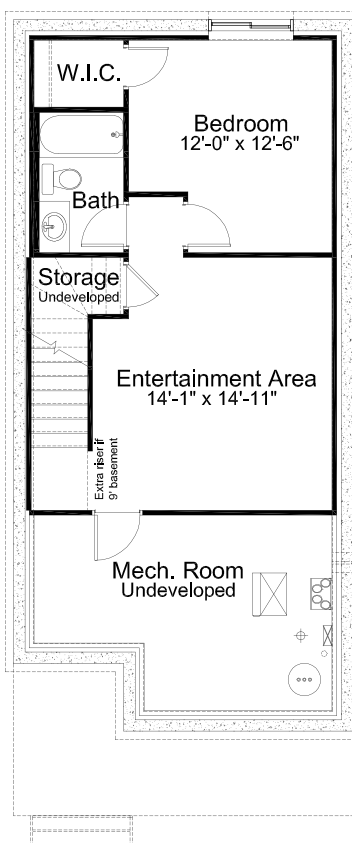
Edited: January 31, 2023

The builder reserves the right to modify or change plans, specifications, features and prices without notice. Materials may be substituted with equivalent or better at the builder's sole discretion. All dimensions and sizes are approximate and are based on architectural measurements. As reverse, mirrored and/or flipped plans occur throughout the building, please see architectural plans if material to your decision to purchase. Renderings, furnishings and equipment shown are an artist's conception and are intended as a general reference only. Please see disclosure statement for specific offering details. E. & O.E.

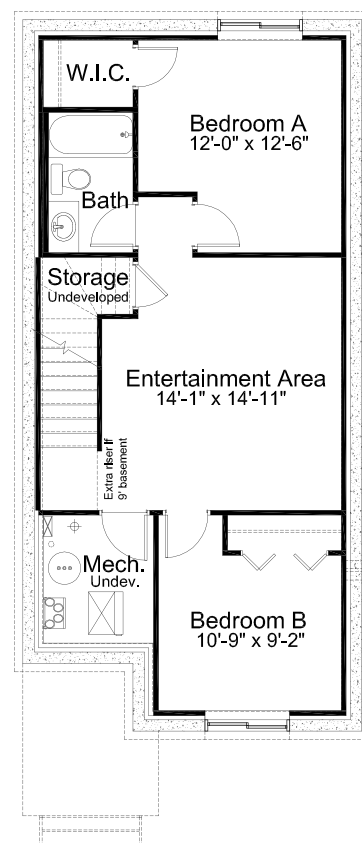
PRE-PLANNED OPTIONS



**Kitchen/Nook & Back
Entrance Layout Option**

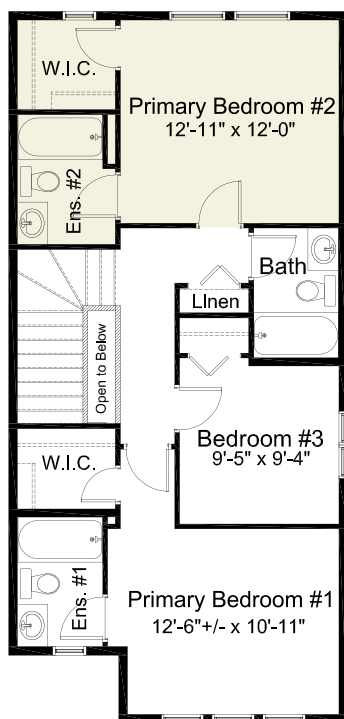


**Basement
Development Option**
470 sq. ft. of developed area

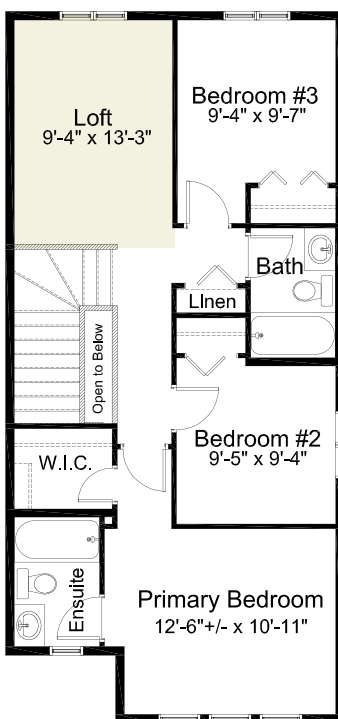


**Basement
Development Option #2**
only available w/ porch elevation
604 sq. ft. of developed area

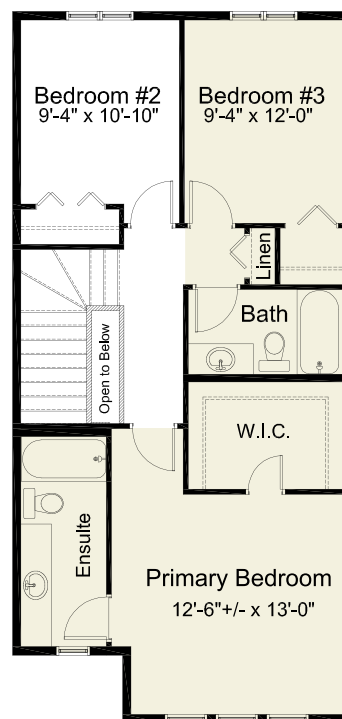
PRE-PLANNED OPTIONS



Dual Primary Bedroom Option



3 Bedroom w/ Loft Option



3 Bedroom Option