



# Lancaster II

**alliston**  
AT HOME

3 Bed | 2.5 Bath | 3,081 sq. ft.

587-757-8503  
[cimarron@allistongroup.ca](mailto:cimarron@allistongroup.ca)  
[allistongroup.ca](http://allistongroup.ca)





# LANCASTER II

3 Bed

2.5 Bath

3,081 sq. ft.

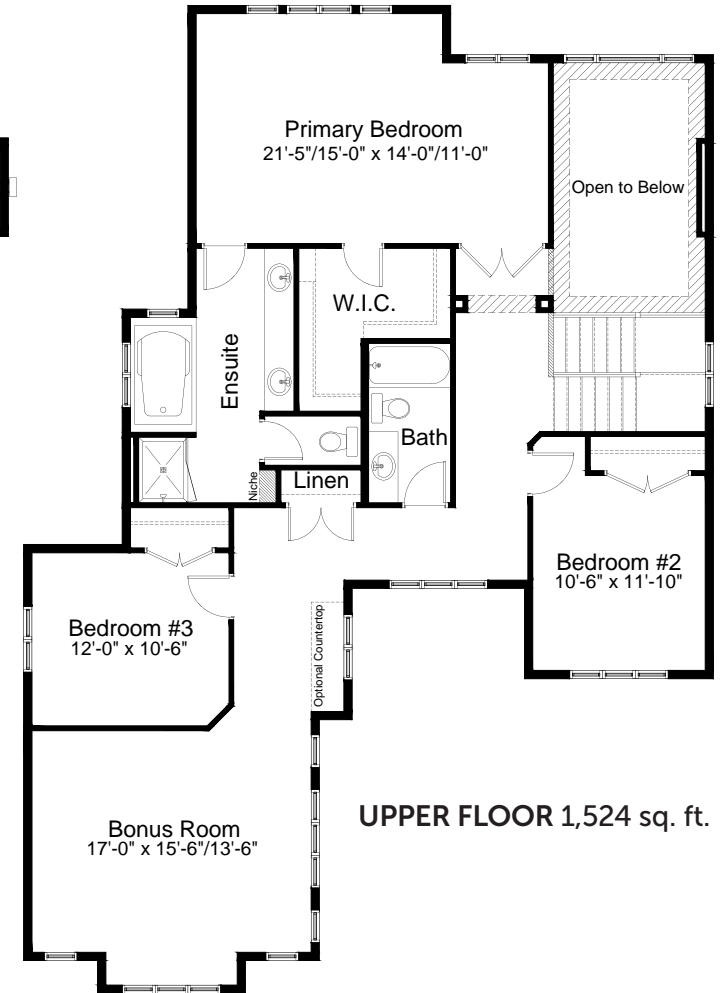
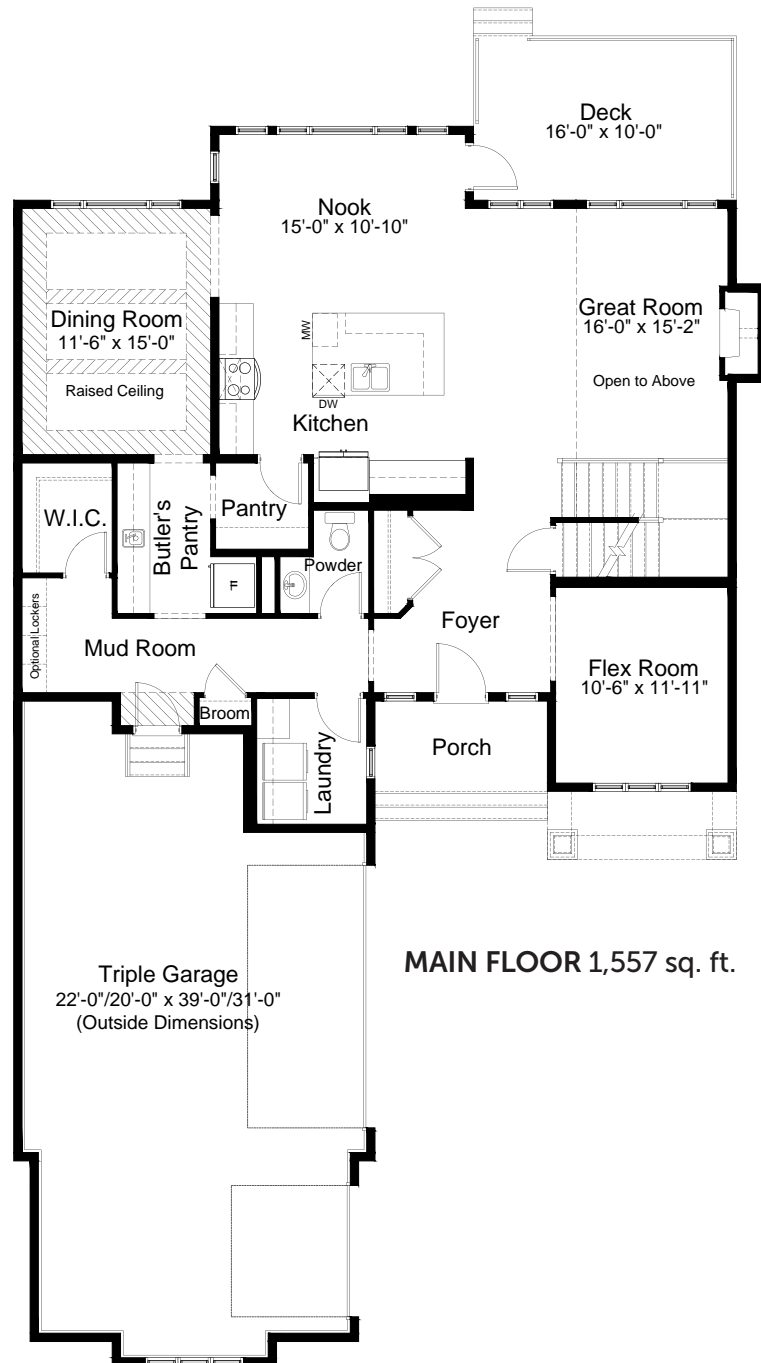
- Open Concept Living
- Open to Above Great Room
- Side Drive Triple Car Garage
- Central Kitchen Layout
- Generous Butler's Pantry
- Walk-thru Kitchen Pantry
- Main Floor Flex Room
- Raised Ceiling in Dining Room
- Fireplace in Great Room
- Upper Floor Bonus Room
- Main Floor Laundry
- Stainless Steel Appliance Package
- Quartz Countertops Throughout
- Mudroom w/ W.I.C.
- Spacious 5-piece Ensuite
- Rear Deck
- Oversized Windows

Edited: September 11, 2023

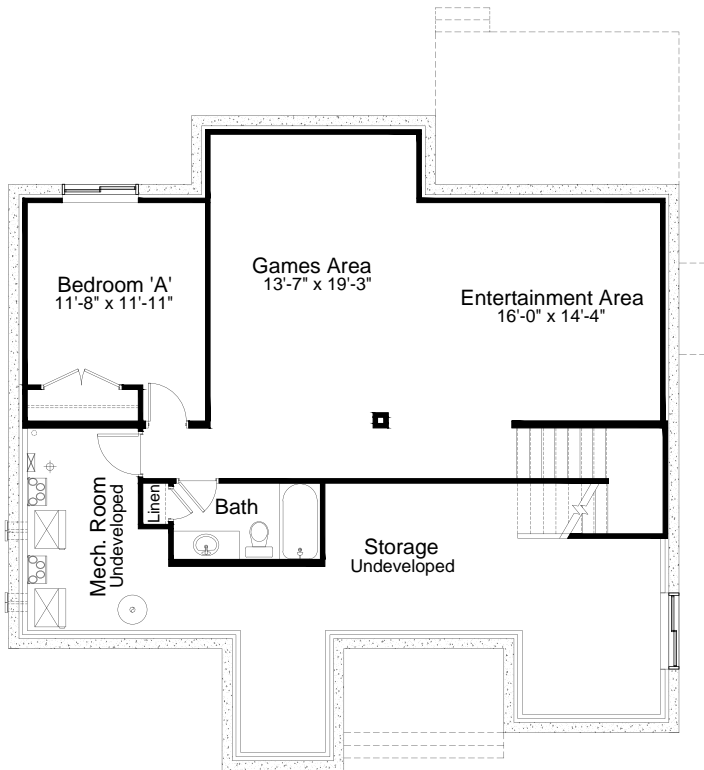
The builder reserves the right to modify or change plans, specifications, features and prices without notice. Materials may be substituted with equivalent or better at the builder's sole discretion. All dimensions and sizes are approximate and are based on architectural measurements. As reverse, mirrored and/or flipped plans occur throughout the building, please see architectural plans if material to your decision to purchase. Renderings, furnishings and equipment shown are an artist's conception and are intended as a general reference only. Please see disclosure statement for specific offering details. E. & O.E.



CRAFTSMAN ELEVATION



**pre-planned options**



**1 Bedroom Basement  
Development Option**  
852 sq. ft. of developed area



**2 Bedroom Basement  
Development Option**  
1,056 sq. ft. of developed area



**PRAIRIE ELEVATION**



**ARTS & CRAFTS ELEVATION**

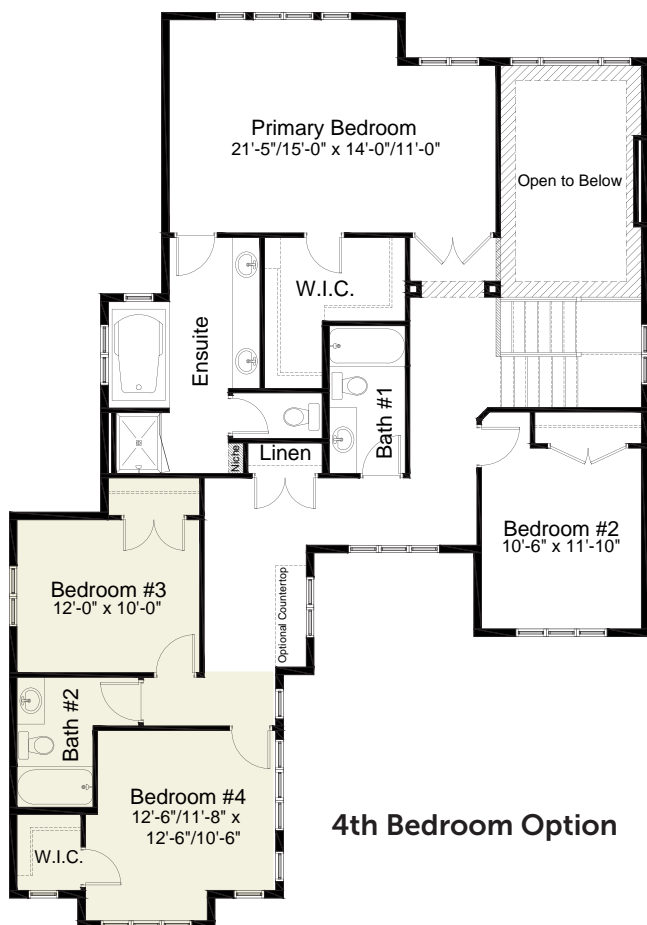


**CRAFTSMAN #2 ELEVATION**

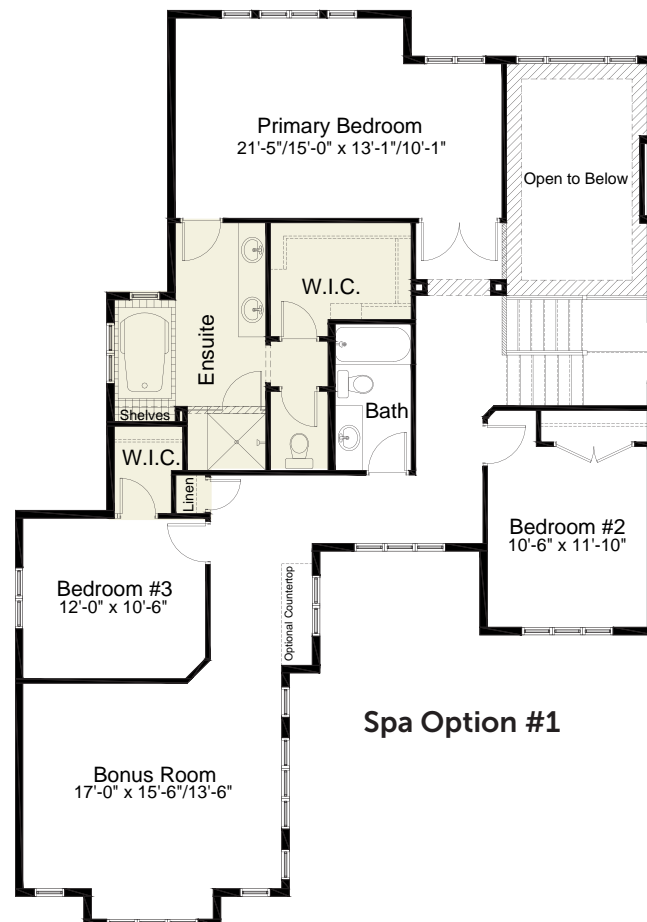


### Spa Option #2

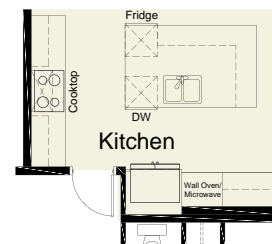
replaces drop-in tub and tiled deck with free-standing tub



4th Bedroom Option



Spa Option #1



Gourmet Kitchen Option

Edited: September 11, 2023

The builder reserves the right to modify or change plans, specifications, features and prices without notice. Materials may be substituted with equivalent or better at the builder's sole discretion. All dimensions and sizes are approximate and are based on architectural measurements. As reverse, mirrored and/or flipped plans occur throughout the building, please see architectural plans if material to your decision to purchase. Renderings, furnishings and equipment shown are an artist's conception and are intended as a general reference only. Please see disclosure statement for specific offering details. E. & O.E.