

alliston

AT HOME



CLAREMONT

craftsman elevation shown

features

- Open Concept Living Area
- Main Floor Flex Area
- Stainless Steel Appliance Package
- Quartz Countertops Throughout
- Luxury Vinyl Plank Flooring
- Luxury Vinyl Tile
- Upper Floor Laundry
- Upper Floor Loft
- Triple Pane Windows

1,768 sq. ft.

3 Bed

2.5 Bath



587-620-3645

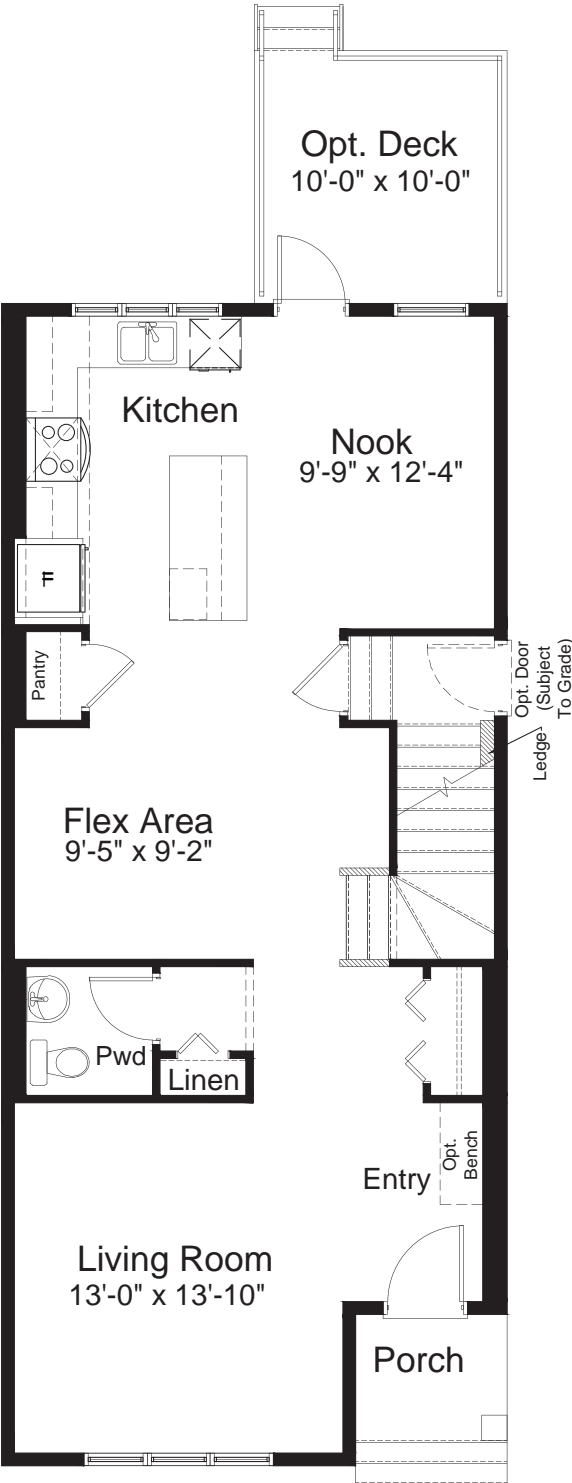
belvedere@allistongroup.ca



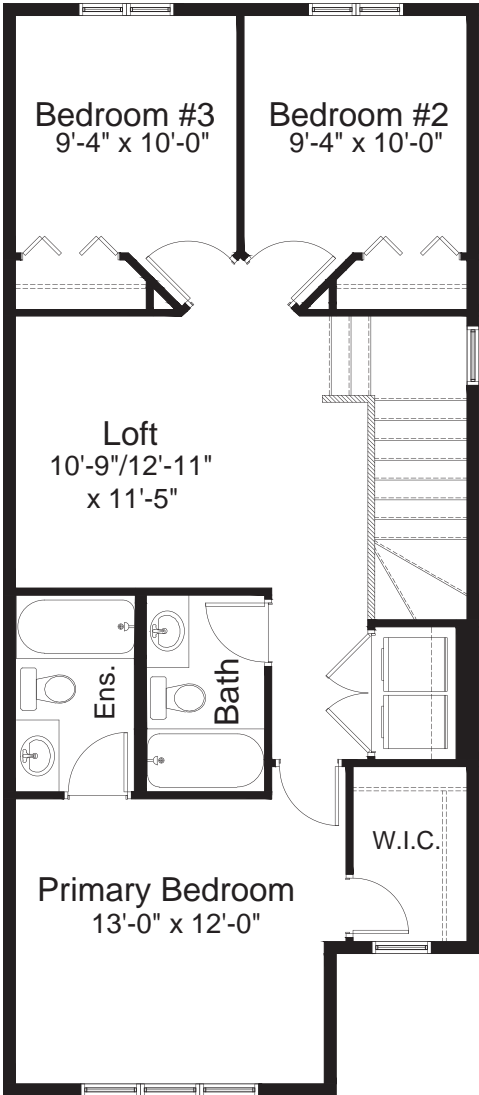
pre-planned options



CRAFTSMAN #1 ELEVATION



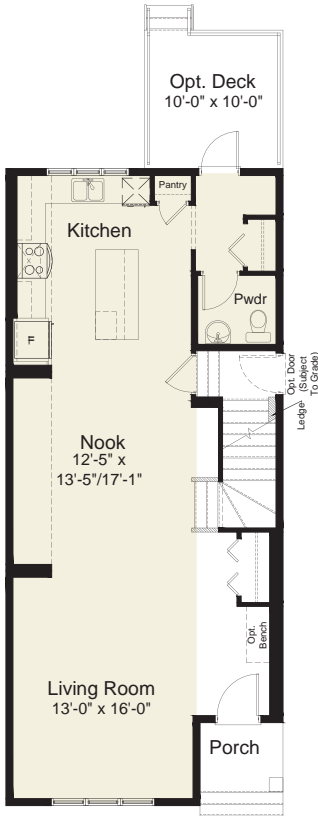
MAIN FLOOR 884 sq. ft.



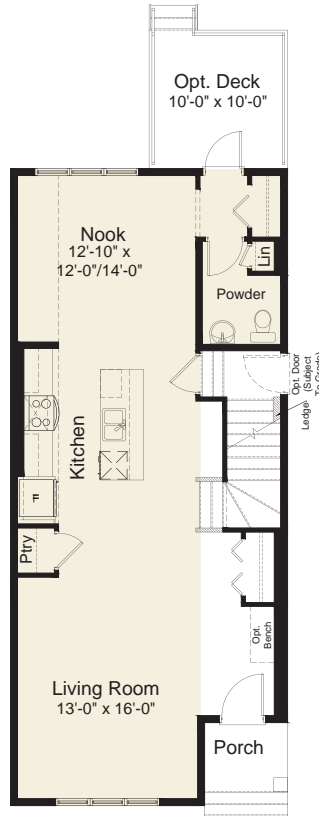
UPPER FLOOR 884 sq. ft.



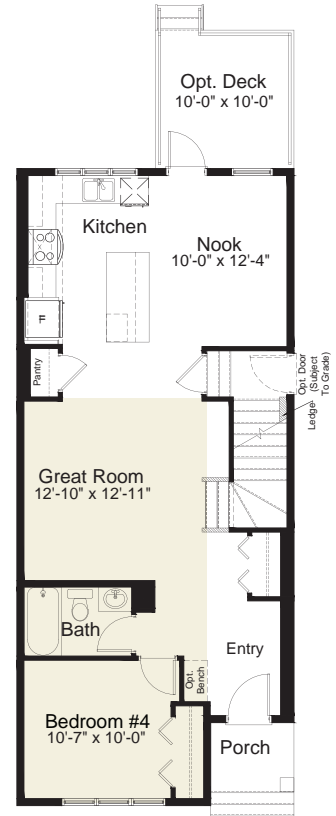
pre-planned options



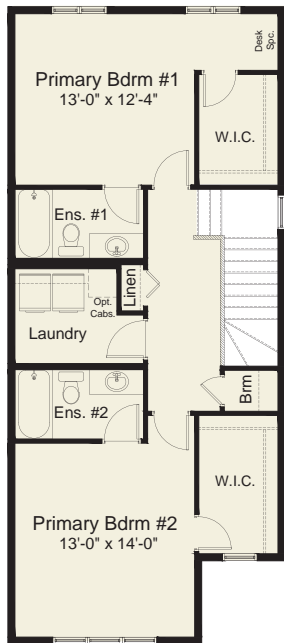
**Kitchen/Nook & Back Entrance
Layout Option #1**



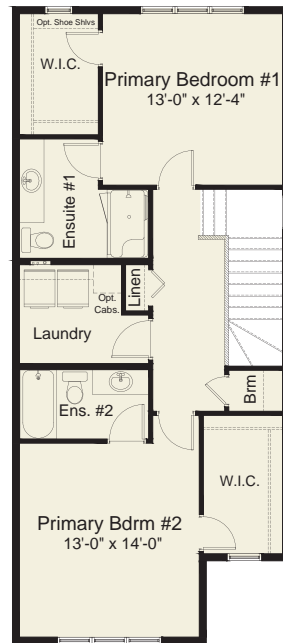
**Kitchen/Nook & Back Entrance
Layout Option #2**



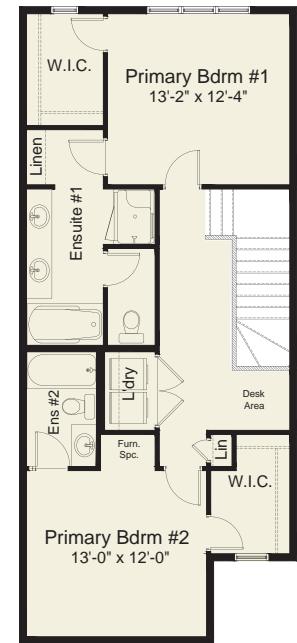
4th Bedroom & Layout Option



Double Primary Bedroom #1



Double Primary Bedroom #2

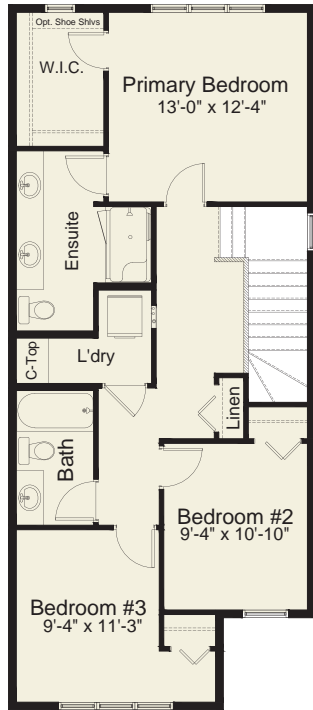


**Double Primary Bedroom #2
w/ Expanded Grand Ensuite Option
(48" x 36" shower)**

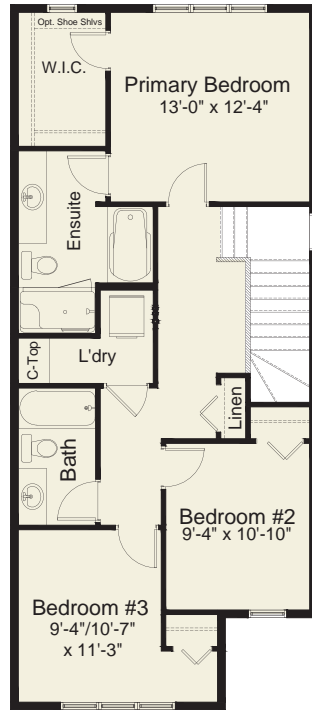
→
more options



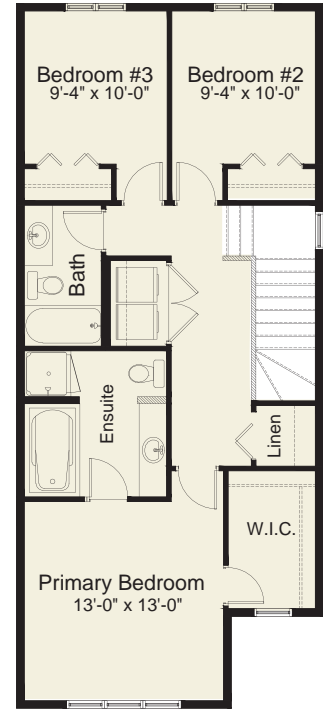
pre-planned options



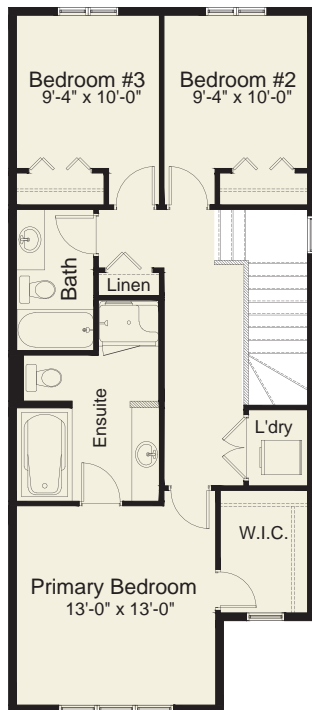
Optional Ensuite/WIC/Laundry (shower only and larger vanity)



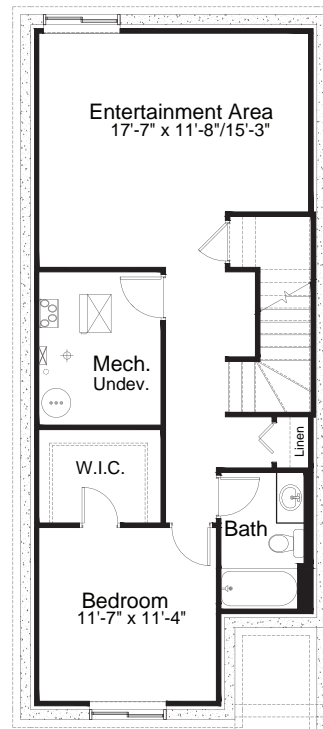
Optional Ensuite/WIC/Laundry



Expanded Grand Ensuite Option (36" x 36" shower)



Expanded Grand Ensuite Option (48" x 36" shower)



Basement Development Option 649 sq. ft. of developed area