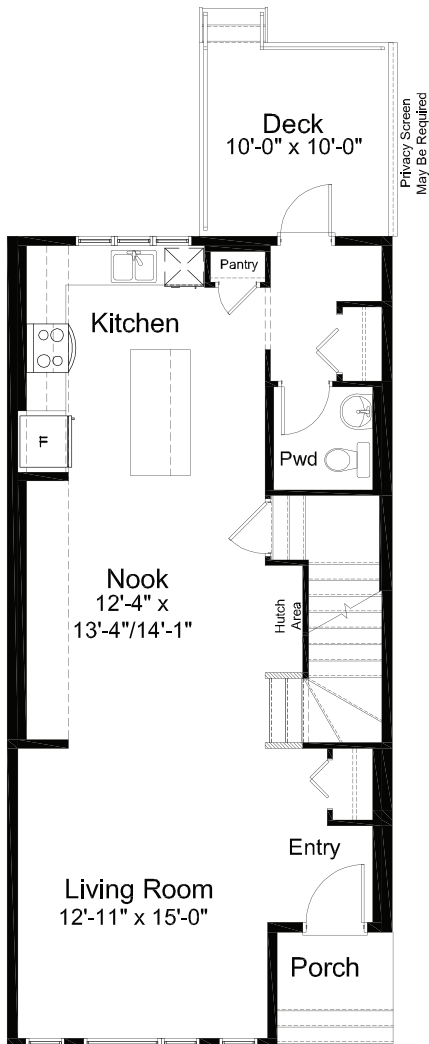
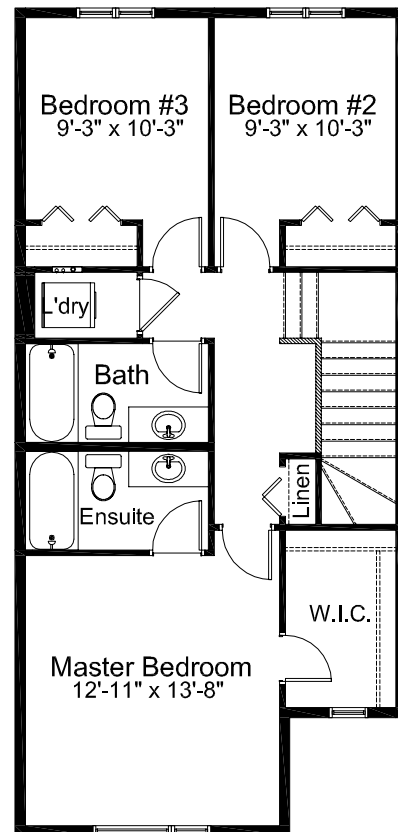




WOLF WILLOW



**MAIN FLOOR: 801 SQ. FT.**

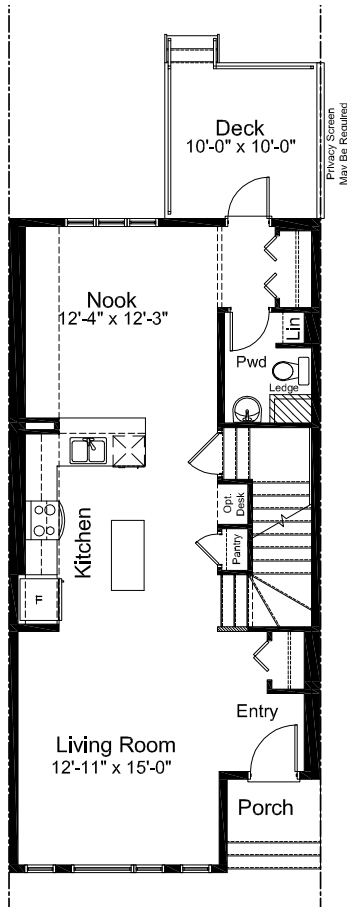


**UPPER FLOOR: 801 SQ. FT.**

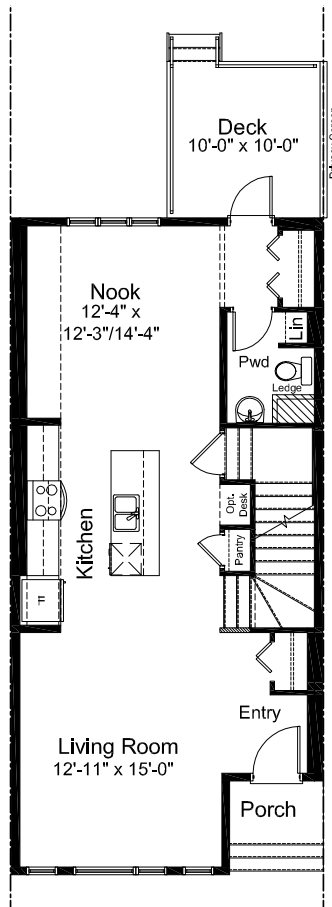
**Edited: September 26, 2020**

The Illustrations shown in this brochure are renderings only and do not represent the final look of your home. Elevations are also subject to approval from Architectural Controls. Madison Avenue Group retains the right to alter plans, features, and specifications without notice. The standard floor plan does not include basement development or options in the base price. Room sizes are approximate.

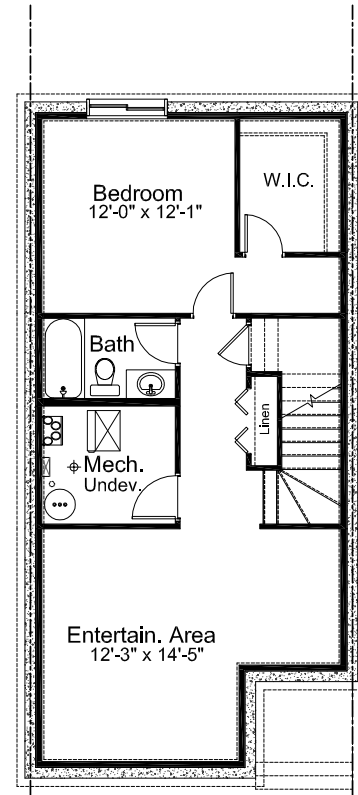
## PRE-PLANNED OPTIONS



**KITCHEN LAYOUT  
OPTION #1**



**KITCHEN LAYOUT  
OPTION #2**

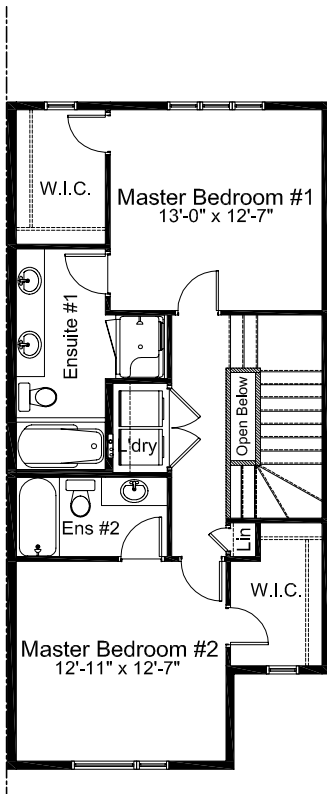


**BASEMENT  
DEVELOPMENT OPTION  
= 623 SQ. FT. OF  
DEVELOPED AREA**

**Edited: September 26, 2020**

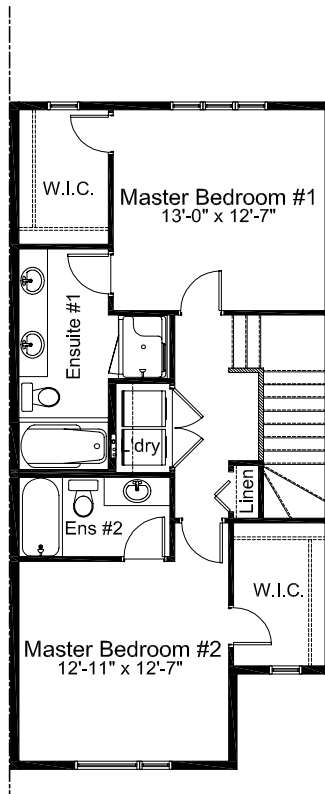
The Illustrations shown in this brochure are renderings only and do not represent the final look of your home. Elevations are also subject to approval from Architectural Controls. Madison Avenue Group retains the right to alter plans, features, and specifications without notice. The standard floor plan does not include basement development or options in the base price. Room sizes are approximate.

## PRE-PLANNED OPTIONS

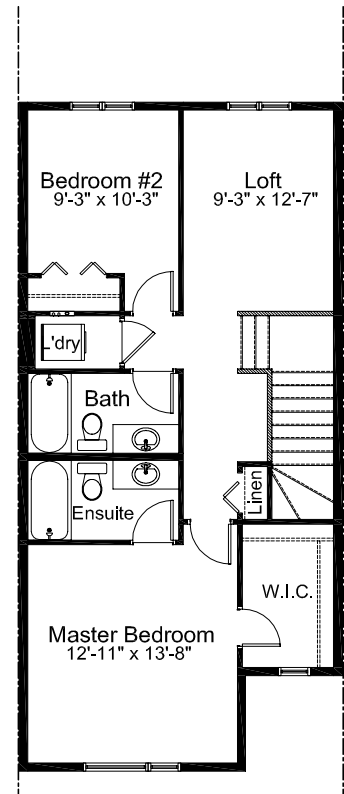


**UPPER FLOOR: 792 SQ. FT.  
DOUBLE MASTER OPTION  
W/ OPTIONAL  
OPEN TO BELOW**

(Not Available with Kitchen Option #1 or #2)



**DOUBLE MASTER  
W/ EXPANDED GRAND  
ENSUITE OPTION  
(48"X36" SHOWER)**



**2 BEDROOM  
WITH LOFT OPTION**

**Edited: September 26, 2020**

The Illustrations shown in this brochure are renderings only and do not represent the final look of your home. Elevations are also subject to approval from Architectural Controls. Madison Avenue Group retains the right to alter plans, features, and specifications without notice. The standard floor plan does not include basement development or options in the base price. Room sizes are approximate.

# WHITNEY FEATURES:

- Open Concept Living Area
- 3 Bedrooms
- 2.5 Bathrooms
- Large Kitchen Island
- Upper Floor Laundry
- Generous Master Walk In Closet

# NOTES

---

---

---

---

---

---

---

---

---

---

# GET IN TOUCH

**Mark Sherlock**  
msherlock@madisonavegroup.com  
403-629-1146

WOLF WILLOW SHOW HOME  
39 WOLF HOLLOW PARK SE, CALGARY AB

MADISON AVENUE GROUP  
SUITE 1500, 150 9TH AVENUE SW CALGARY, AB. T2P 3H9  
INFO@MADISONAVEGROUP.COM | 403-217-9970 | **MADISONAVEGROUP.COM**

