



**TRIBECA**

**3 Bed | 2.5 Bath**

- Open Concept Living Area
- Rear Kitchen Layout
- Luxury Vinyl Plank Flooring
- Luxury Vinyl Tile

- Stainless Steel Appliance Package
- Quartz Countertops Throughout
- Open to Above/Below Staircase
- Spacious Primary Bedroom WIC

- Primary Bedroom Ensuite
- Verandah or Porch in Front Entry
- Upper Floor Washer & Dryer
- Upper Floor Tech Area

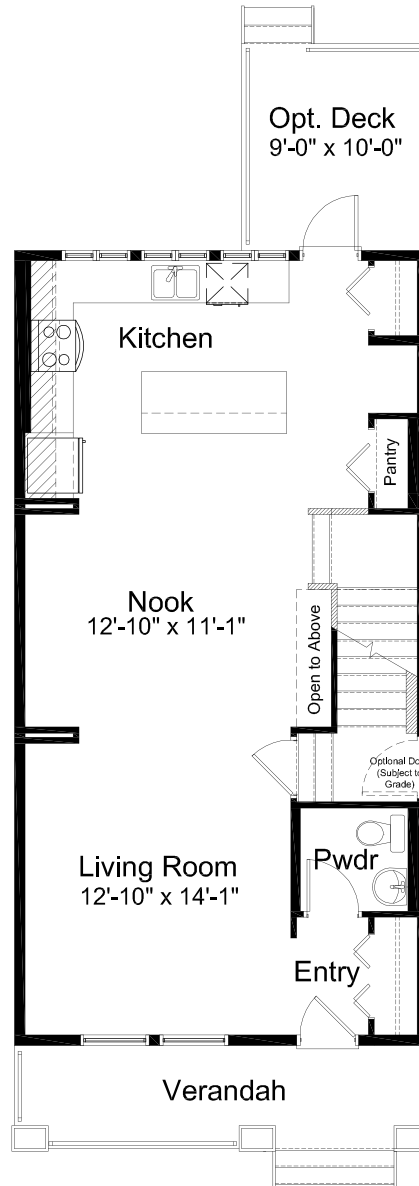




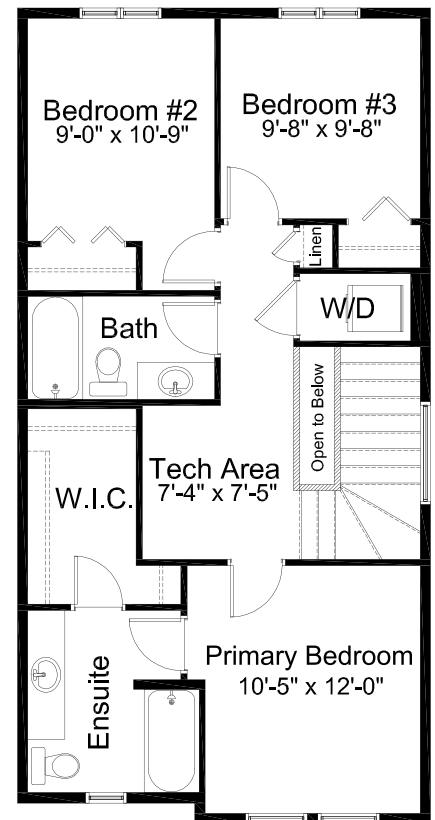
Prairie w/ Verandah



Prairie w/ Porch



MAIN FLOOR 770 sq. ft.



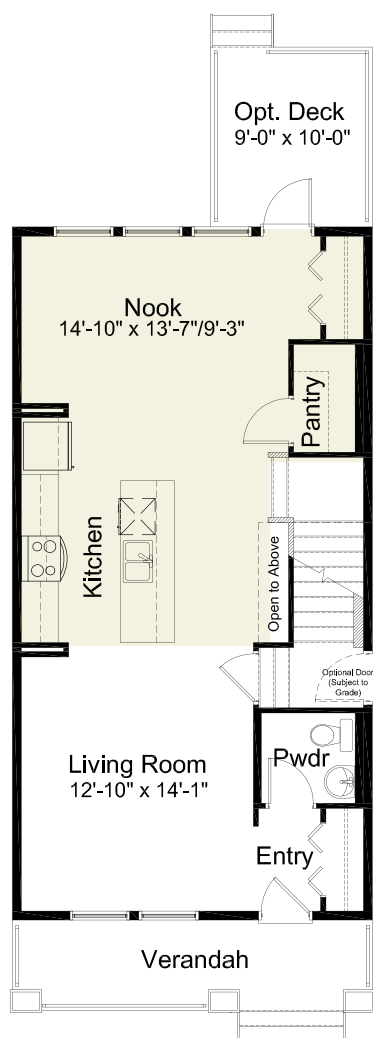
UPPER FLOOR 770 sq. ft.

## NOTES

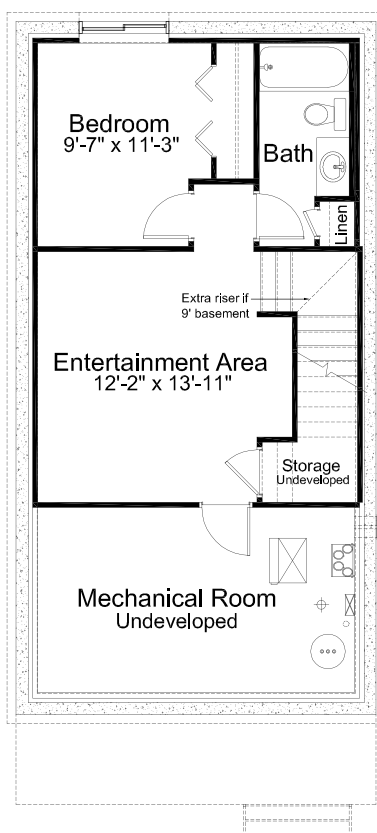
Edited: January 31, 2023

The builder reserves the right to modify or change plans, specifications, features and prices without notice. Materials may be substituted with equivalent or better at the builder's sole discretion. All dimensions and sizes are approximate and are based on architectural measurements. As reverse, mirrored and/or flipped plans occur throughout the building, please see architectural plans if material to your decision to purchase. Renderings, furnishings and equipment shown are an artist's conception and are intended as a general reference only. Please see disclosure statement for specific offering details. E. & O.E.

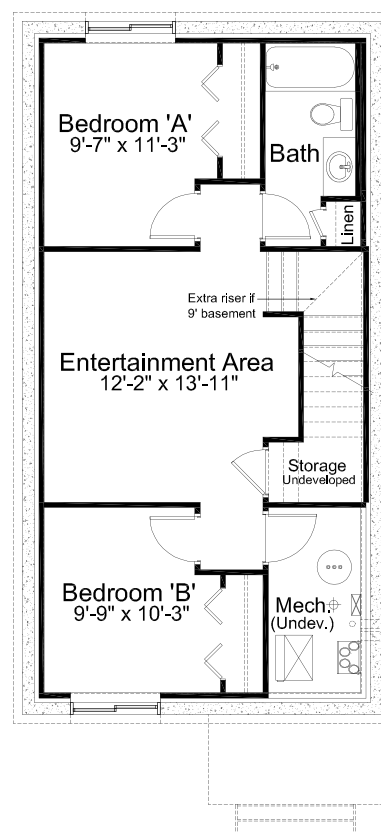
## PRE-PLANNED OPTIONS



**Kitchen/Nook & Back  
Entrance Layout Option**

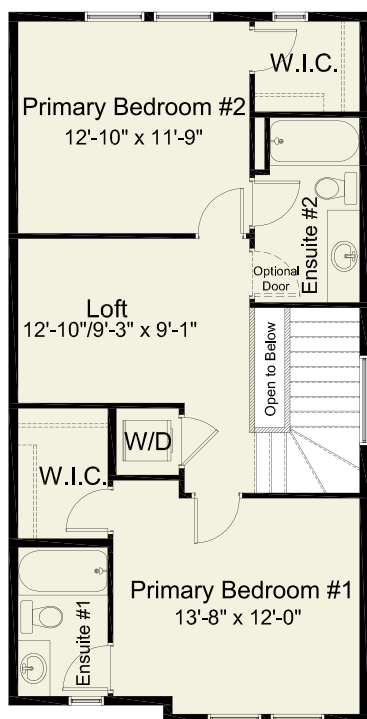


**Basement  
Development Option**  
411 sq. ft. of developed area

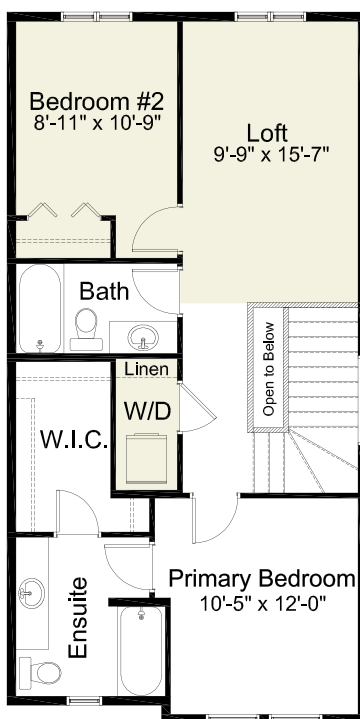


**Basement  
Development Option #2**  
\*only available w/ porch elevation\*  
546 sq. ft. of developed area

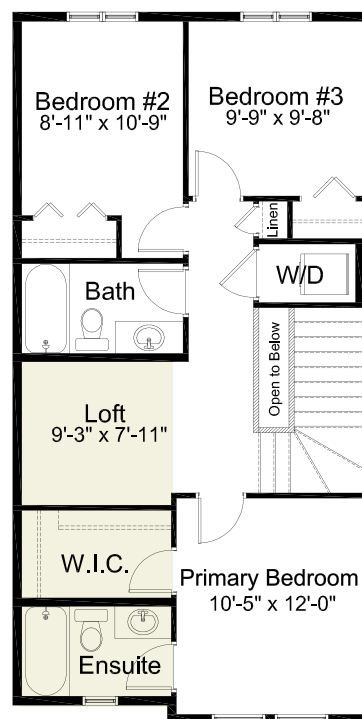
## PRE-PLANNED OPTIONS



Dual Primary Bedroom Option



2 Bedroom w/ Loft Option



3 Bedroom w/ Loft Option