

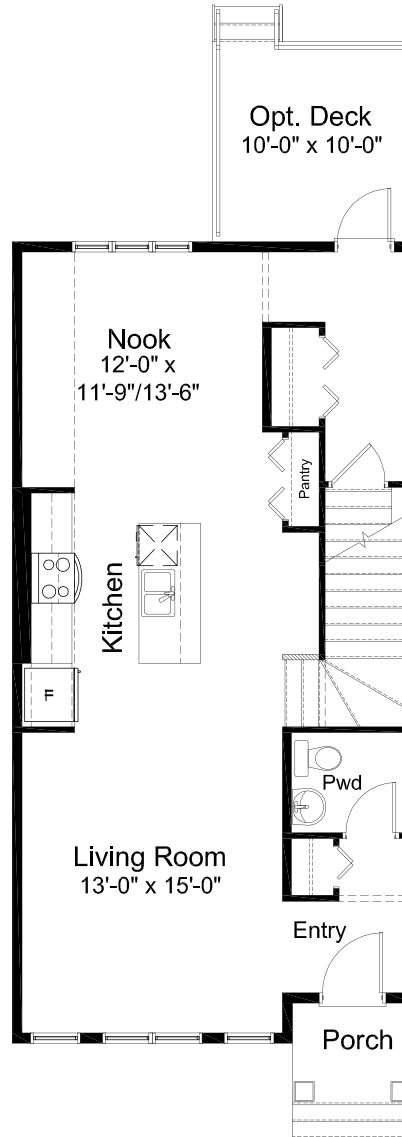
WINDSOR

3 Bed | 2.5 Bath

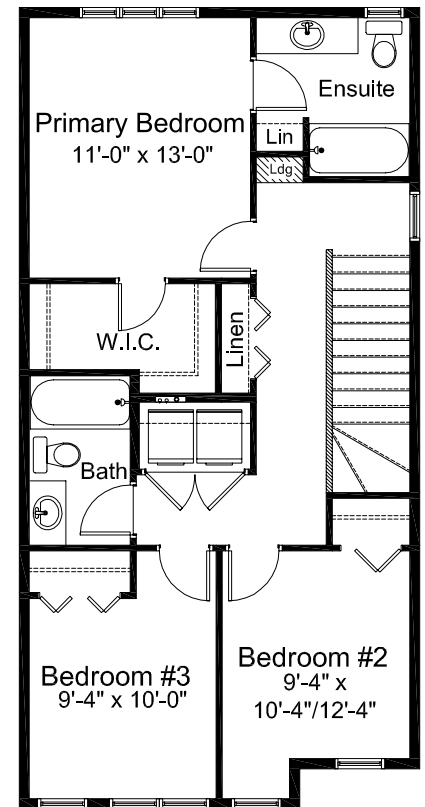
- Open Concept Living Space
- Luxury Vinyl Plank Flooring
- Luxury Vinyl Tile
- Central Kitchen Layout
- Quartz Countertops Throughout
- Stainless Steel Appliance Package
- Private Front Entry Powder Room
- Upper Floor Laundry
- Private Primary Bed Ensuite
- Spacious Primary WIC
- Front Porch



Prairie w/ Porch



MAIN FLOOR 788 sq. ft.



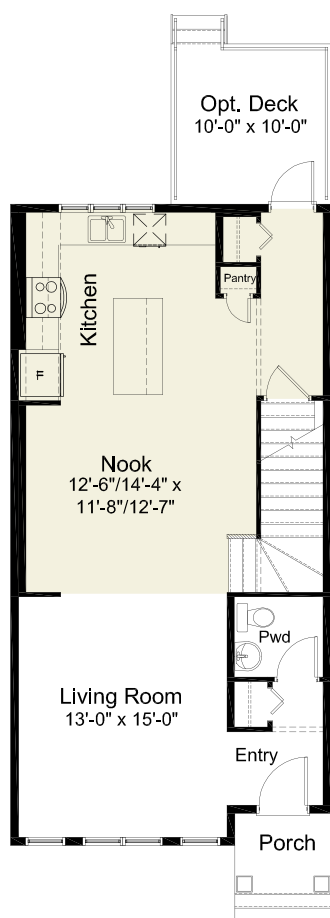
UPPER FLOOR 788 sq. ft.

NOTES

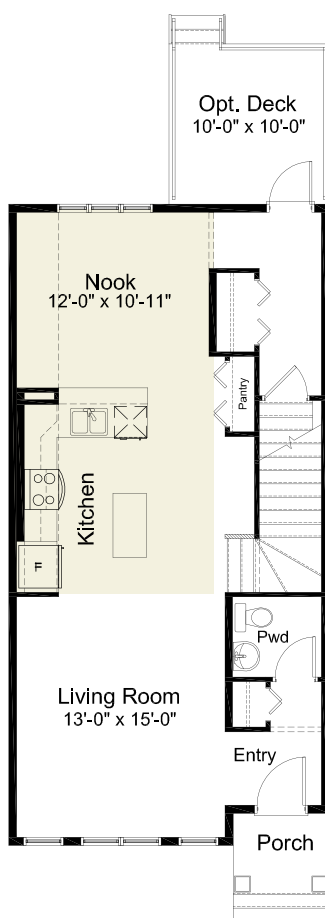
Edited: January 31, 2023

The builder reserves the right to modify or change plans, specifications, features and prices without notice. Materials may be substituted with equivalent or better at the builder's sole discretion. All dimensions and sizes are approximate and are based on architectural measurements. As reverse, mirrored and/or flipped plans occur throughout the building, please see architectural plans if material to your decision to purchase. Renderings, furnishings and equipment shown are an artist's conception and are intended as a general reference only. Please see disclosure statement for specific offering details. E. & O.E.

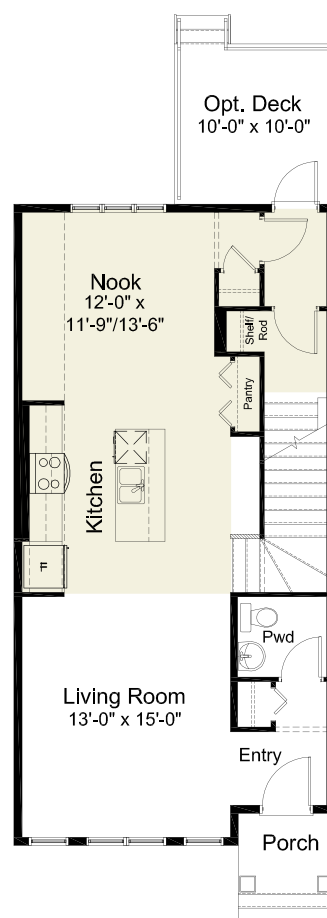
PRE-PLANNED OPTIONS



**Kitchen/Nook & Back
Entrance Layout Option**

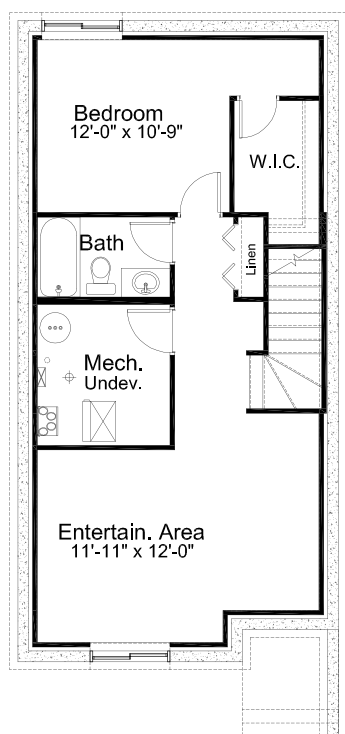


**Kitchen Layout
Option #1**

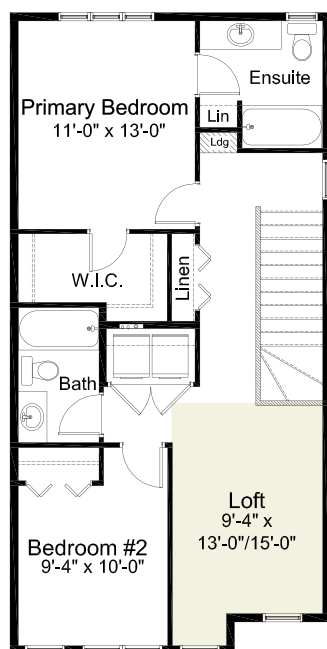


**Separate Entrance
from the Back Option**

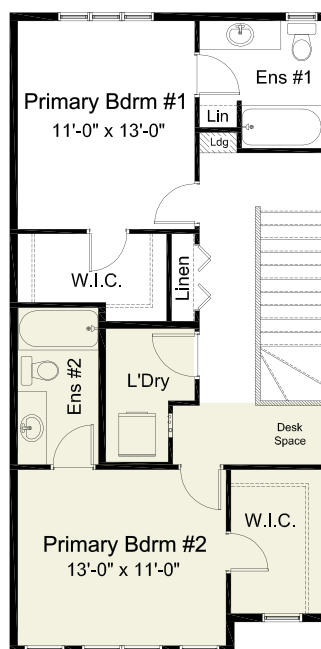
PRE-PLANNED OPTIONS



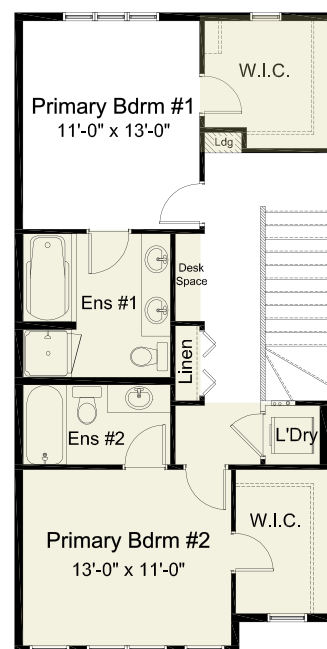
**Basement
Development Option**
598 sq. ft. of
developed area



**2 Bedroom w/
Loft Option**



**Dual Primary
Bedroom Option**



**Dual Primary Bedroom
w/ Expanded Grand
Ensuite Option**
(36" x 36" Shower)