



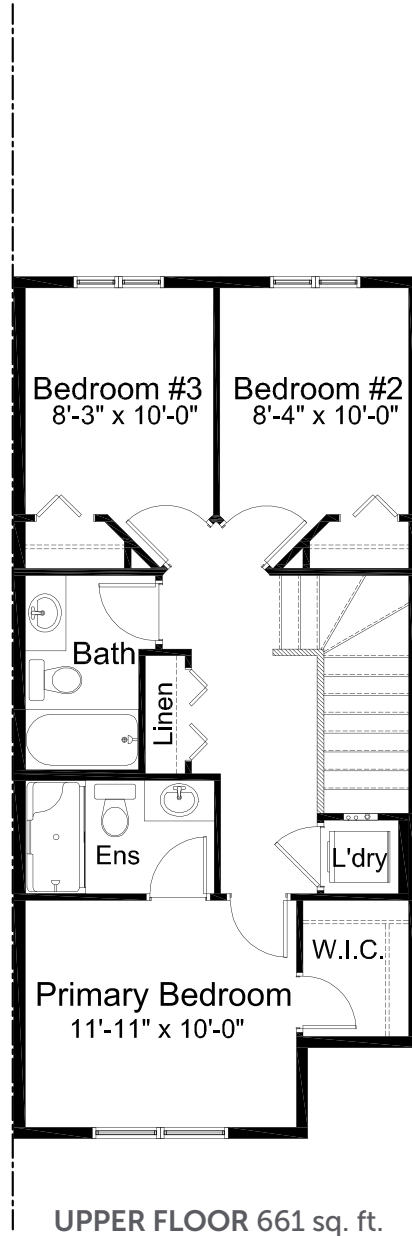
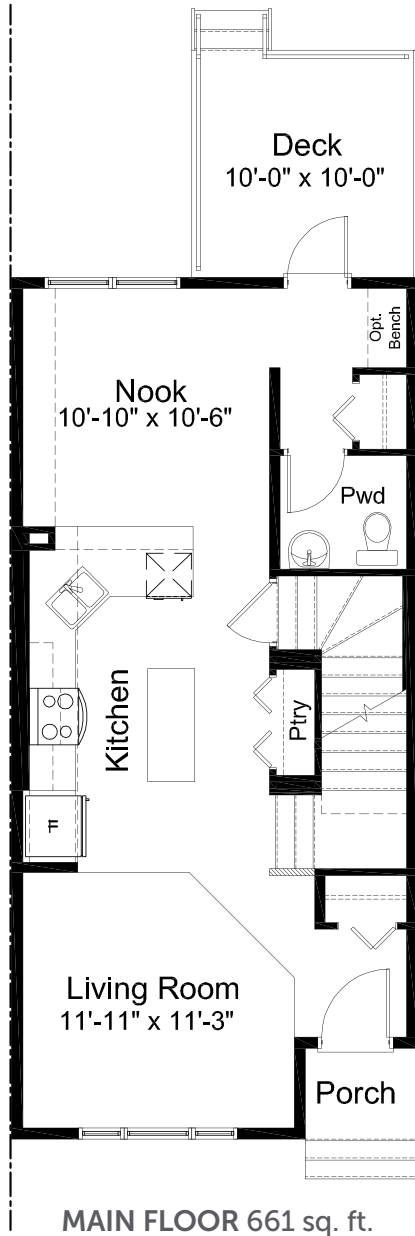
**SANFORD**

**3 Bed | 2.5 Bath**

- Open Concept Living Area
- Private Powder Room
- Upper Floor Laundry
- Spacious Primary Walk In Closet
- Detached Garage
- Stainless Steel Appliance Package
- Quartz Countertops Throughout
- Rear Deck
- Fully Fenced and Landscaped
- Luxury Vinyl Plank Flooring
- Luxury Vinyl Tile
- NO CONDO FEES!



wolf willow show home  
11 wolf creek drive se



**NOTES**

---



---



---

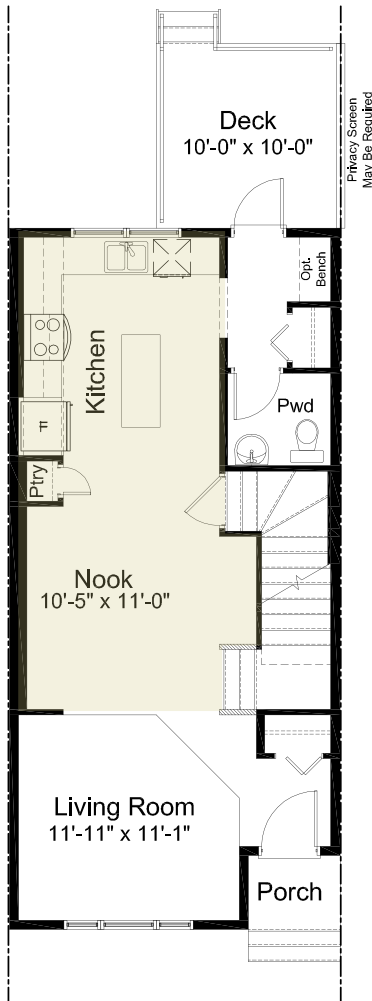


---

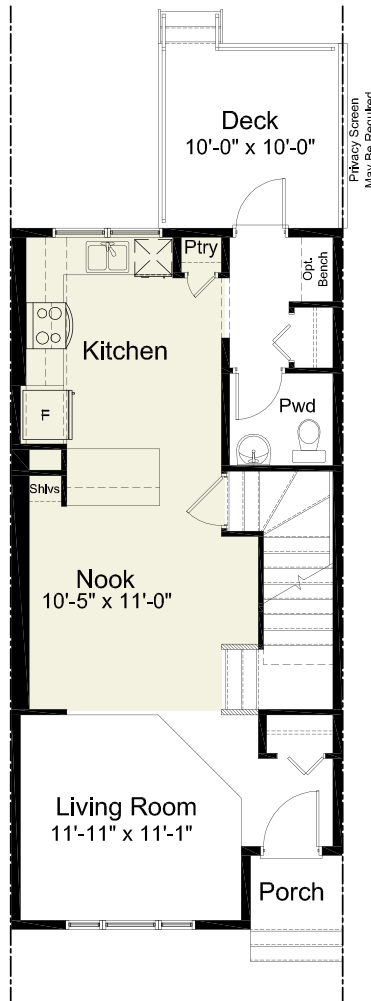
Edited: January 30, 2023

The builder reserves the right to modify or change plans, specifications, features and prices without notice. Materials may be substituted with equivalent or better at the builder's sole discretion. All dimensions and sizes are approximate and are based on architectural measurements. As reverse, mirrored and/or flipped plans occur throughout the building, please see architectural plans if material to your decision to purchase. Renderings, furnishings and equipment shown are an artist's conception and are intended as a general reference only. Please see disclosure statement for specific offering details. E. & O.E.

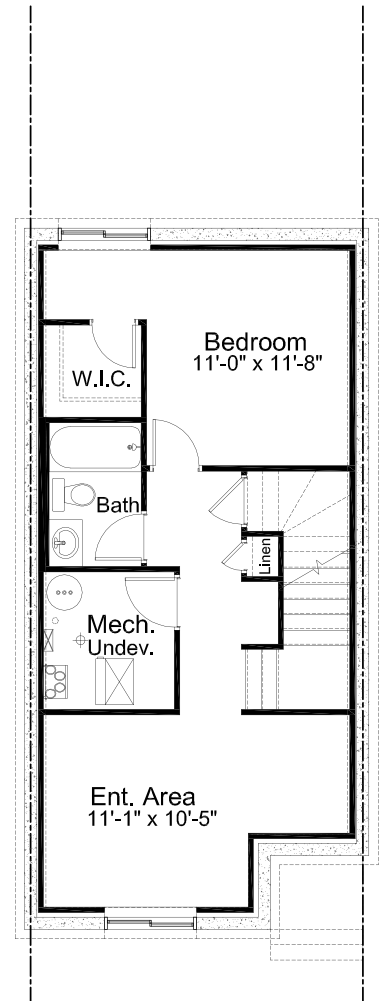
PRE-PLANNED OPTIONS



Kitchen/Nook & Back  
Entrance Layout Option #1

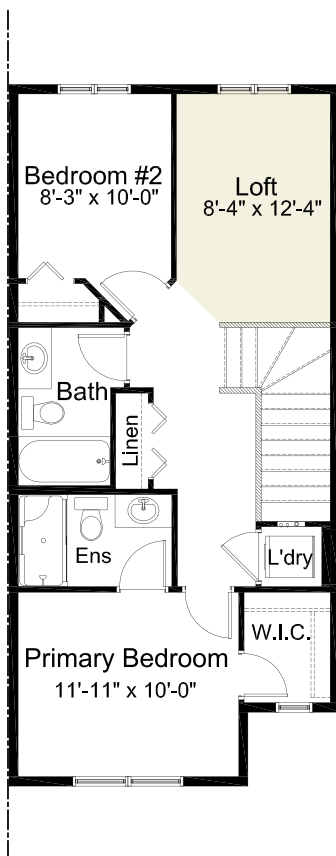


Kitchen/Nook & Back  
Entrance Layout Option #2

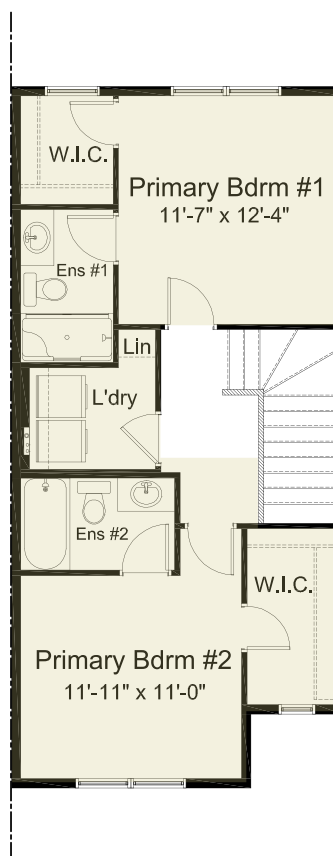


Basement  
Development Option  
495 sq. ft. of developed area

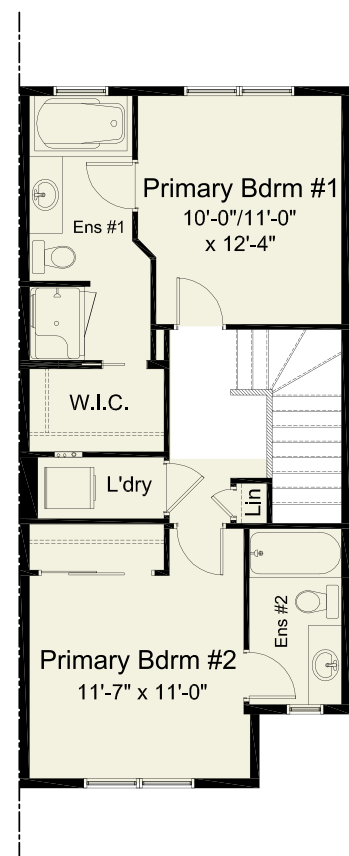
PRE-PLANNED OPTIONS



2 Bedroom w/ Loft Option



Double Primary Bedroom Option



Double Primary Bedroom w/  
Expanded Grand Ensuite Option  
(48" x 36" Shower)