



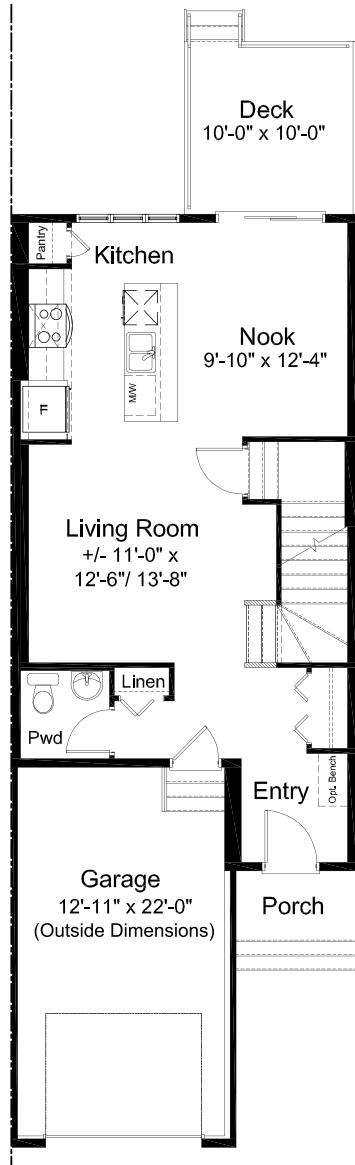
NEVADA

2 Bed | 2.5 Bath

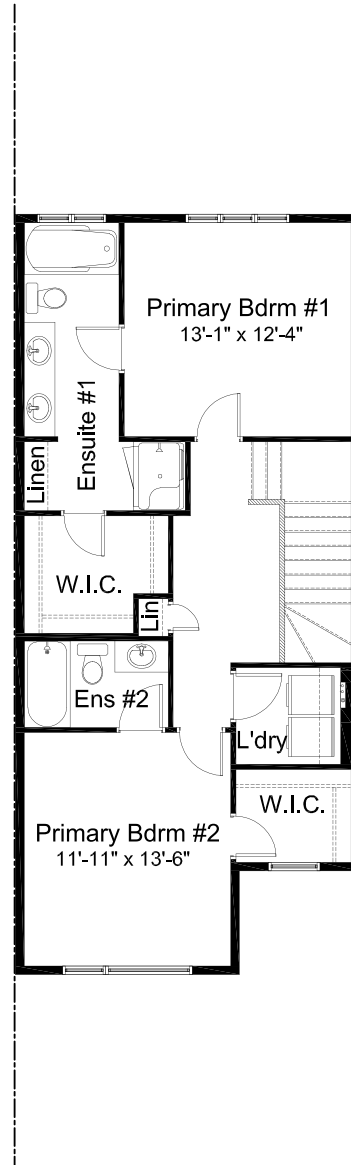
- Open Concept Living Area
- Dual Primary Bedrooms
- Upper Floor Laundry
- Spacious Primary Walk In Closet
- Attached Single Car Garage
- Stainless Steel Appliance Package
- Quartz Countertops Throughout
- Rear Deck
- Fully Fenced and Landscaped
- Luxury Vinyl Plank Flooring
- Luxury Vinyl Tile
- NO CONDO FEES!



wolf willow show home
11 wolf creek drive se



MAIN FLOOR 683 sq. ft.



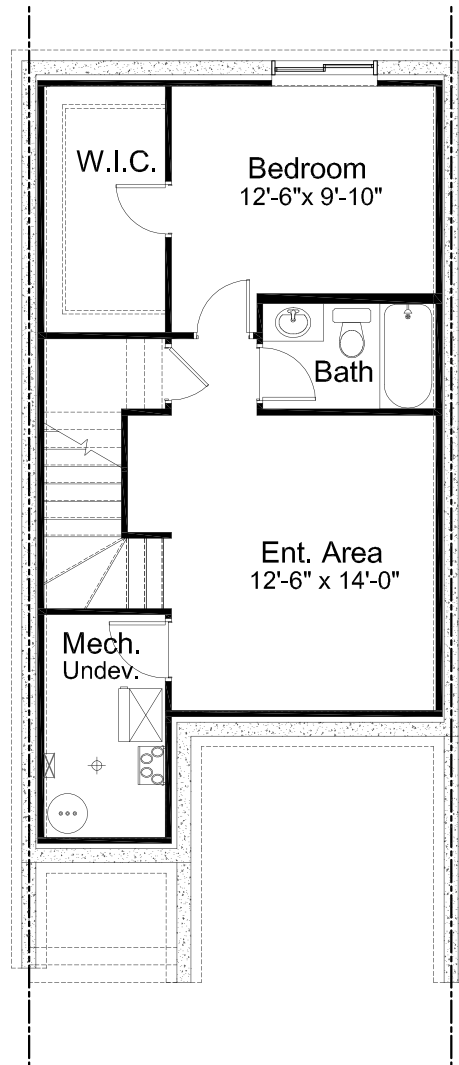
UPPER FLOOR 835 sq. ft.

NOTES

Edited: January 30, 2023

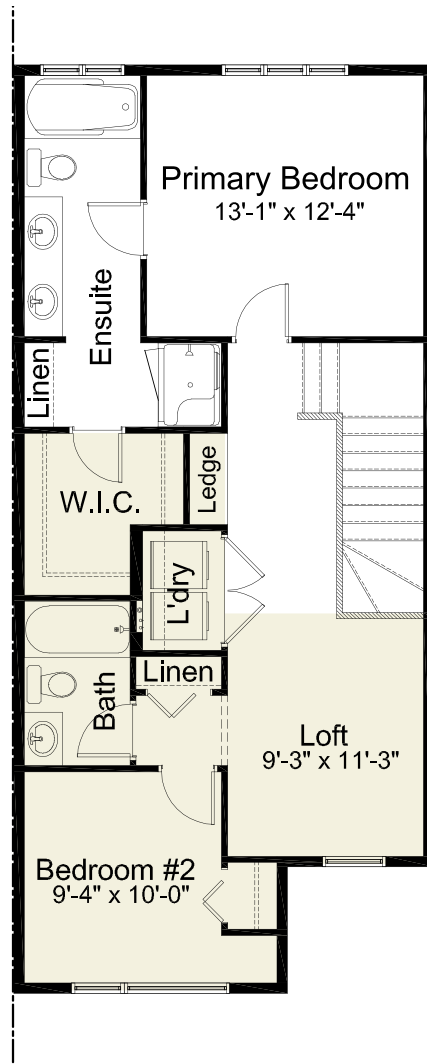
The builder reserves the right to modify or change plans, specifications, features and prices without notice. Materials may be substituted with equivalent or better at the builder's sole discretion. All dimensions and sizes are approximate and are based on architectural measurements. As reverse, mirrored and/or flipped plans occur throughout the building, please see architectural plans if material to your decision to purchase. Renderings, furnishings and equipment shown are an artist's conception and are intended as a general reference only. Please see disclosure statement for specific offering details. E. & O.E.

PRE-PLANNED OPTIONS



Basement Development Option
495 sq. ft. of developed area

PRE-PLANNED OPTIONS



2 Bedroom w/ Loft Option