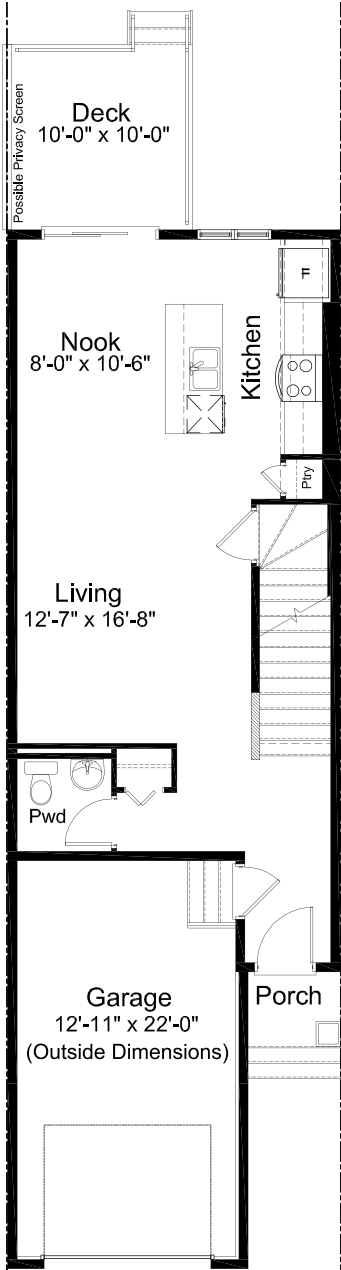




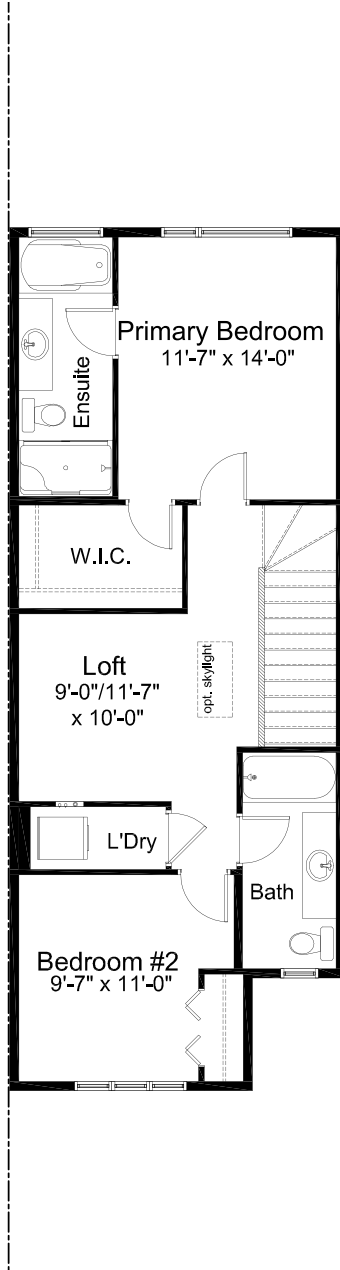
KINGSLEY II **2 Bed | 2.5 Bath**

- Open Concept Living Area
- Private Powder Room
- Upper Floor Laundry
- Spacious Primary Walk In Closet
- Front Attached Single Car Garage
- Stainless Steel Appliance Package
- Quartz Countertops Throughout
- Rear Deck
- Fully Fenced and Landscaped
- Luxury Vinyl Plank Flooring
- Luxury Vinyl Tile
- NO CONDO FEES!

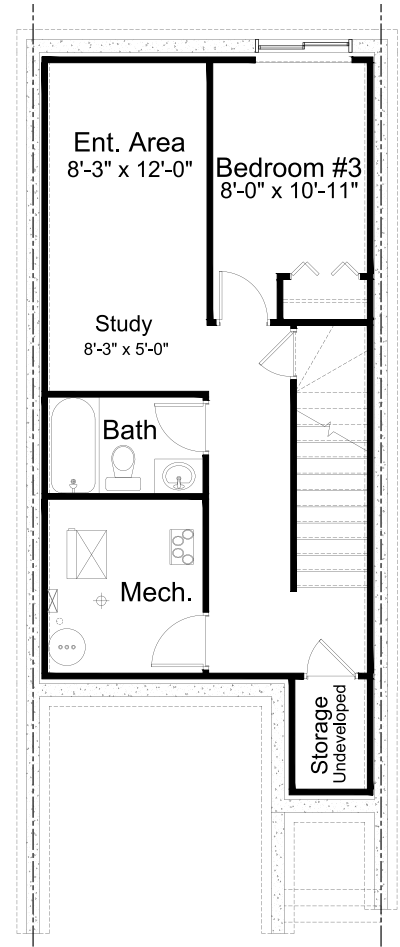




MAIN FLOOR 643 sq. ft.



UPPER FLOOR 795 sq. ft.



Basement
Development Option
431 sq. ft. of developed area

NOTES

Edited: January 30, 2023

The builder reserves the right to modify or change plans, specifications, features and prices without notice. Materials may be substituted with equivalent or better at the builder's sole discretion. All dimensions and sizes are approximate and are based on architectural measurements. As reverse, mirrored and/or flipped plans occur throughout the building, please see architectural plans if material to your decision to purchase. Renderings, furnishings and equipment shown are an artist's conception and are intended as a general reference only. Please see disclosure statement for specific offering details. E. & O.E.