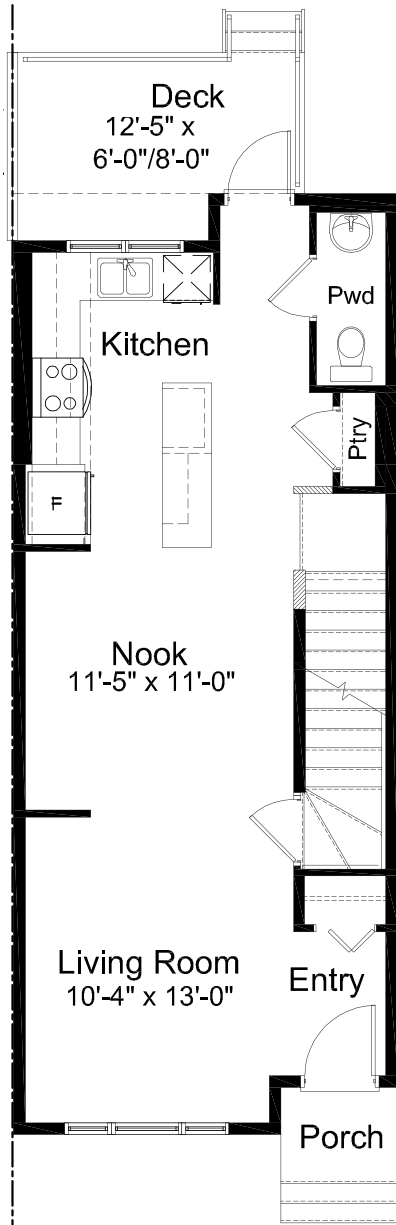




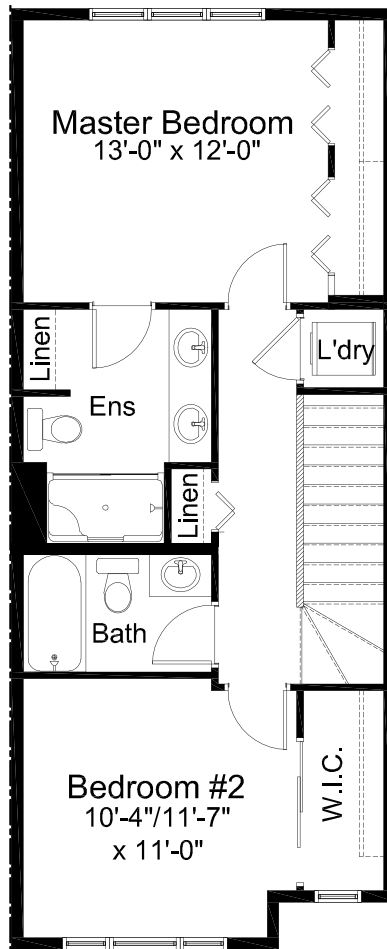
PINEHURST **2 Bed | 2.5 Bath**

- 2 Bedrooms | 2.5 Bathrooms
- Open Concept Living Area
- Luxury Vinyl Plank Flooring
- Luxury Vinyl Tile
- Stainless Steel Appliance Package
- Quartz Countertops Throughout
- Upper Floor Laundry
- Rear Deck
- Oversized Single Car Garage
- Fully Fenced and Landscaped
- NO CONDO FEES!

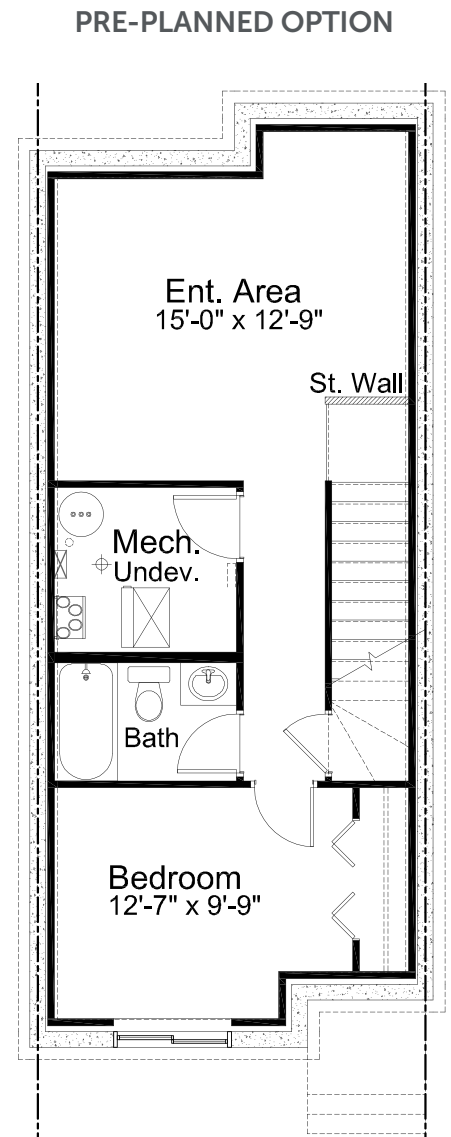




MAIN FLOOR 627 sq. ft.



UPPER FLOOR 643 sq. ft.



BASEMENT DEVELOPMENT
OPTION 466 sq. ft. OF
DEVELOPED AREA

NOTES

Edited: September 12, 2022

The builder reserves the right to modify or change plans, specifications, features and prices without notice. Materials may be substituted with equivalent or better at the builder's sole discretion. All dimensions and sizes are approximate and are based on architectural measurements. As reverse, mirrored and/or flipped plans occur throughout the building, please see architectural plans if material to your decision to purchase. Renderings, furnishings and equipment shown are an artist's conception and are intended as a general reference only. Please see disclosure statement for specific offering details. E. & O.E.