

# alliston

AT HOME



## HAZELTON

### features

- Open Concept Living
- Open to Above Great Room
- Side Drive Triple Car Garage
- Central Kitchen Layout
- Walk-in Kitchen Pantry
- Fireplace in Great Room
- Oversized Mudroom
- Main Floor Flex Room
- Upper Floor Laundry
- Large Rear Deck
- Oversized Windows
- Upper Floor Bonus Room
- Stainless Steel Appliance Package
- Quartz Countertops Throughout
- Spacious 5-piece Ensuite & WIC

2,457 sq. ft.

3 Bed

2.5 Bath



CIMARRON

587-757-8503

[cimarron@allistongroup.ca](mailto:cimarron@allistongroup.ca)



# HAZELTON

3 Bed

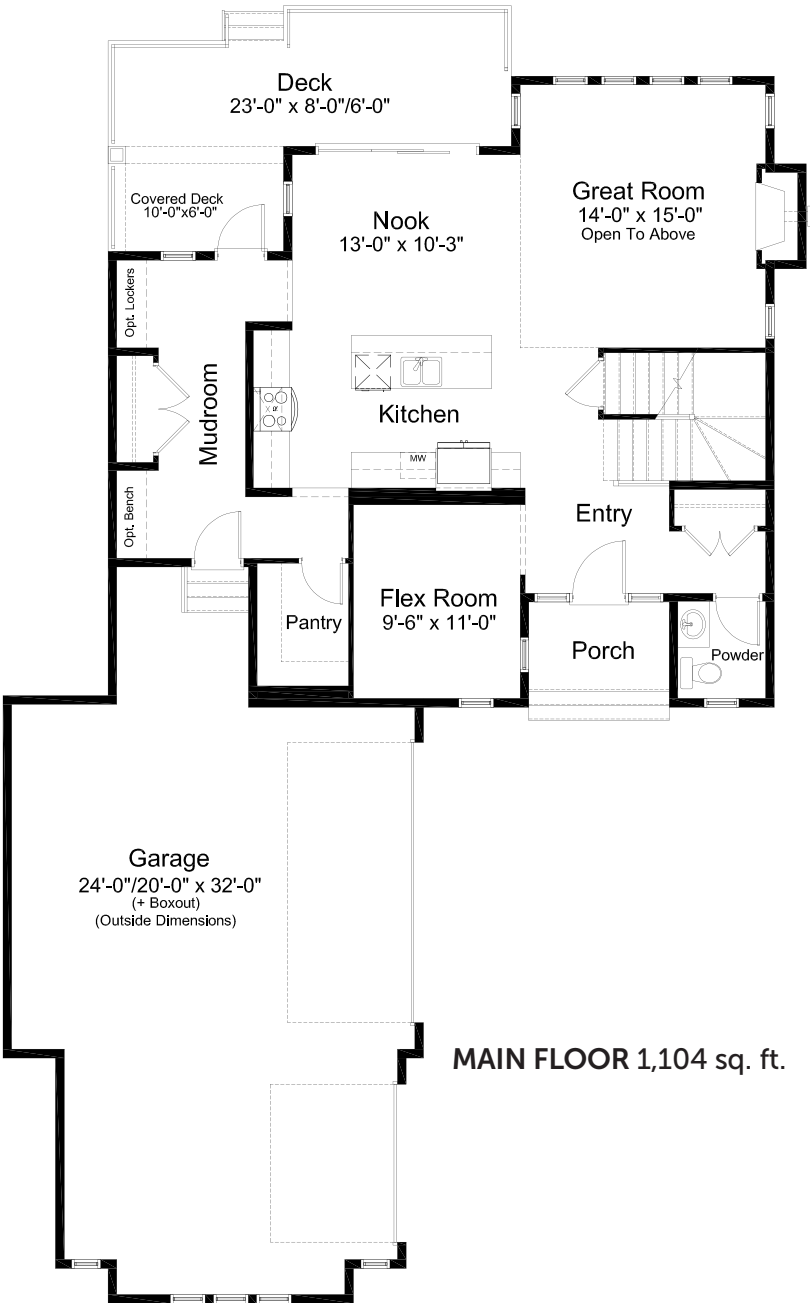
2.5 Bath

2,457 sq. ft.

## standard plan

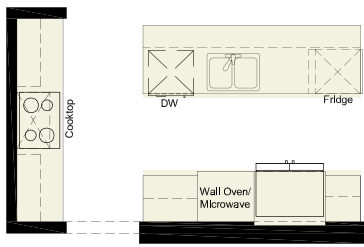


FARMHOUSE ELEVATION





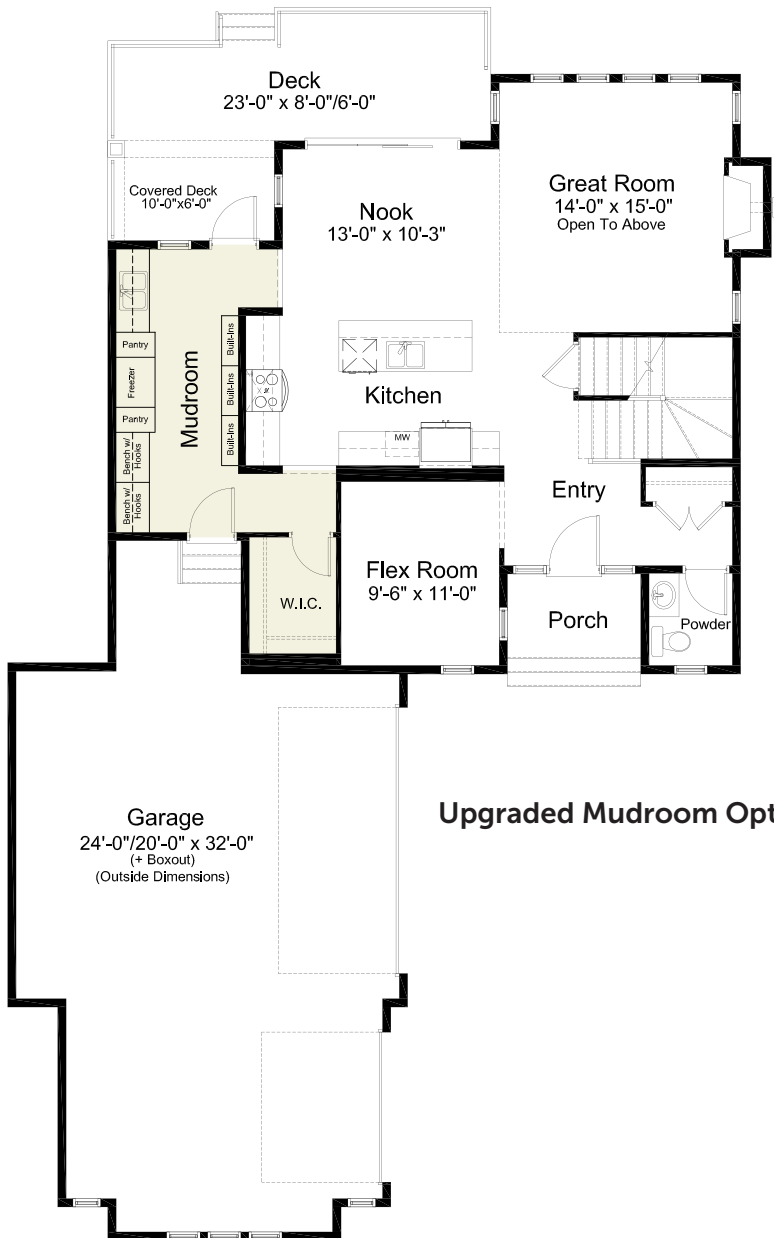
# pre-planned options



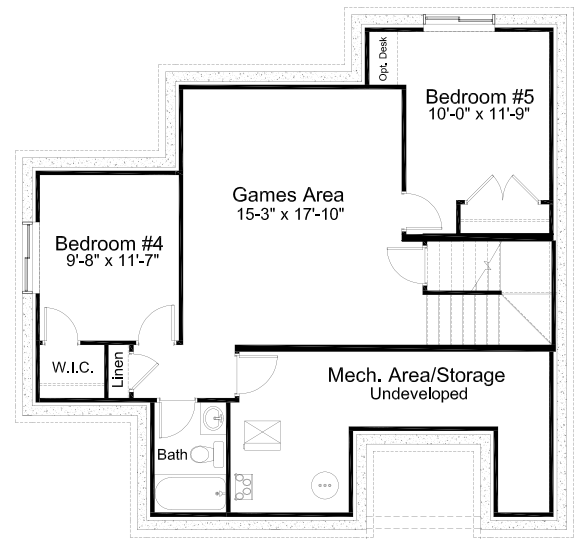
**Gourmet Kitchen Option**



**1 Bedroom Basement Development Option**  
718 sq. ft. of developed area



**Upgraded Mudroom Option**



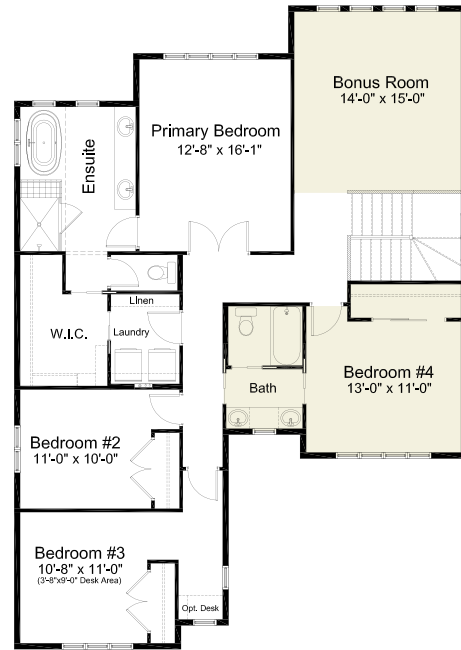
**2 Bedroom Basement Development Option**  
718 sq. ft. of developed area



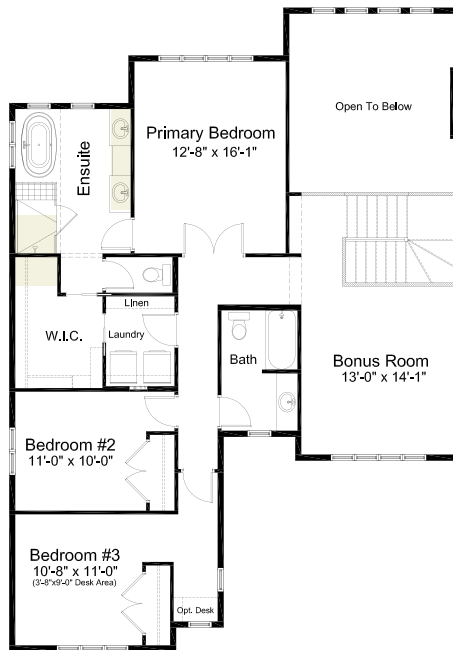
# pre-planned options



**4 Bedroom Option**  
1,353 sq. ft.



**4 Bedroom  
w/ Bonus Room Option**  
1,580 sq. ft.



**Upgraded Ensuite Option  
w/ Curbless Shower**