

# alliston

AT HOME



modern elevation shown

## JUNIPER

### features

- Open Concept Living Area
- Luxury Vinyl Plank Flooring
- Luxury Vinyl Tile
- Stainless Steel Appliance Package
- Quartz Countertops Throughout
- Upper Floor Laundry
- Upper Floor Loft
- 5-Piece Ensuite
- Main Floor 4th Bedroom
- Main Floor Full Bath
- Attached Double Car Garage
- Triple Pane Windows

2,052 sq. ft.

4 Bed

3 Bath



587-620-3645

[belvedere@allistongroup.ca](mailto:belvedere@allistongroup.ca)



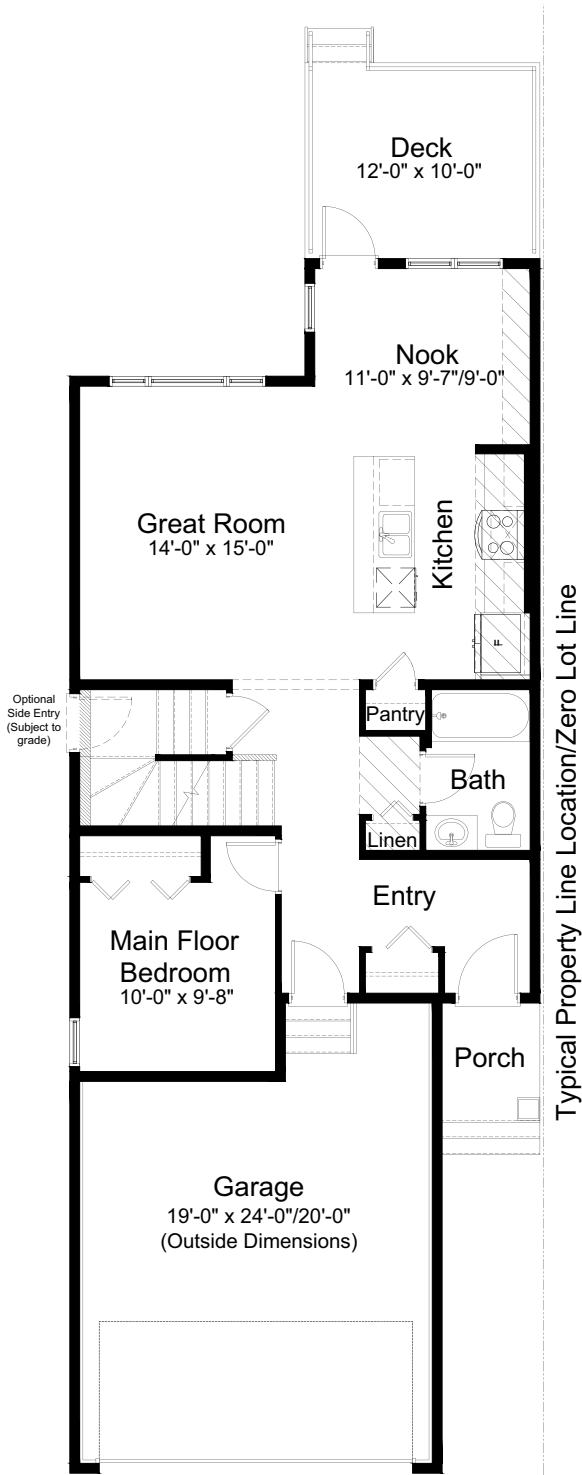
JUNIPER

4 Bed      3 Bath      2,052 sq. ft.

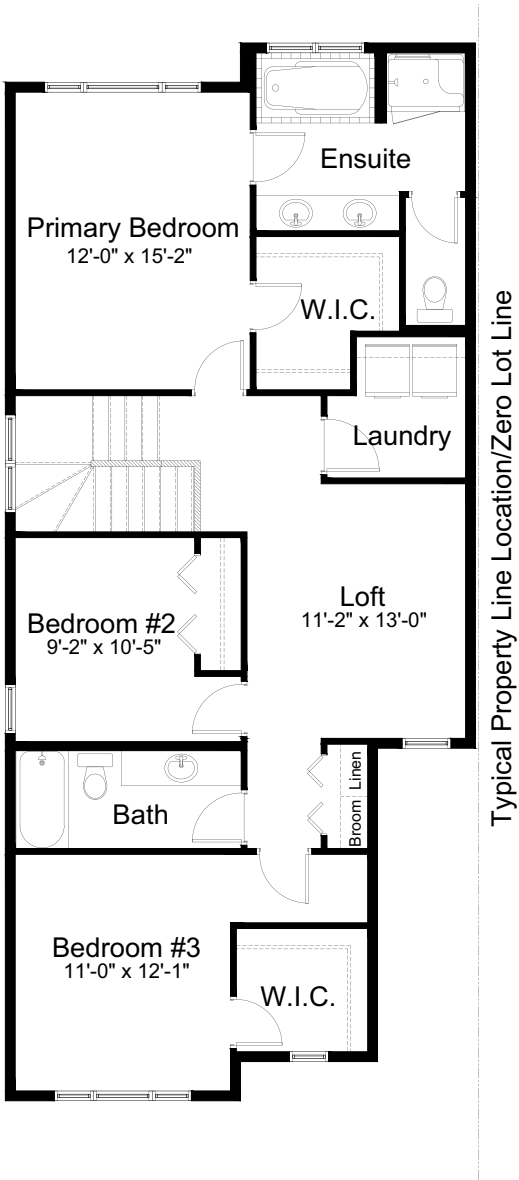
standard plan



CRAFTSMAN #1 ELEVATION



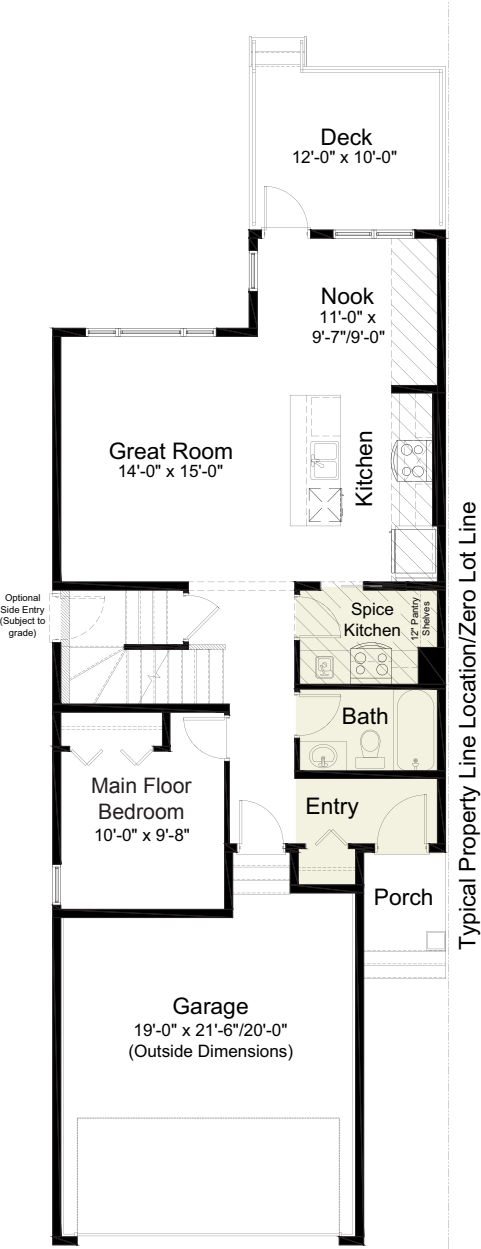
MAIN FLOOR 884 sq. ft.



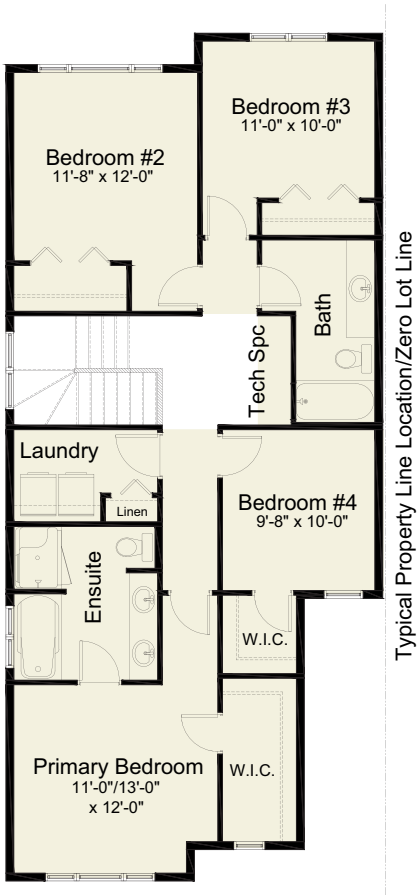
UPPER FLOOR 1,168 sq. ft.



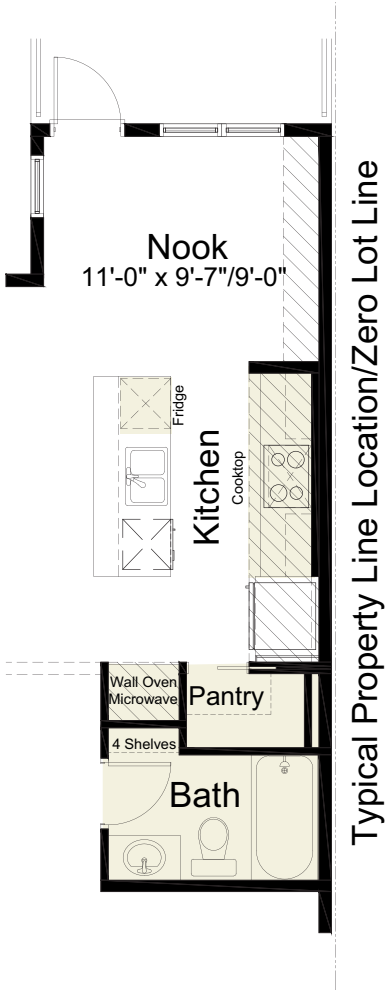
pre-planned options



**Spice Kitchen Option**  
main floor 895 sq. ft.

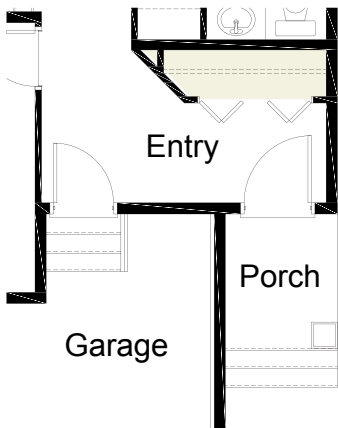


**4 Bedroom Option/Layout**  
upper floor 1,168 sq. ft.

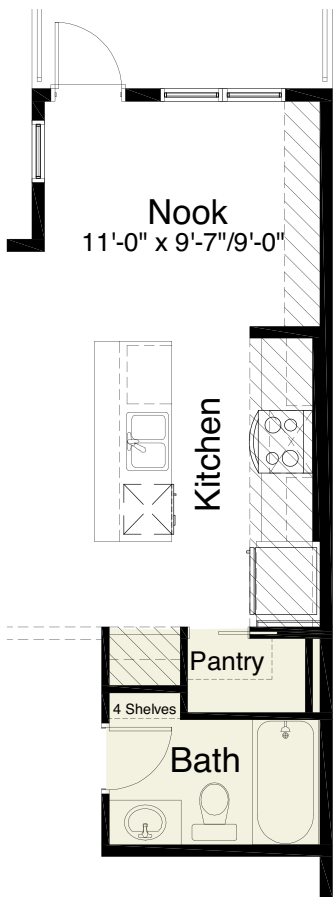


**Gourmet Kitchen Option**

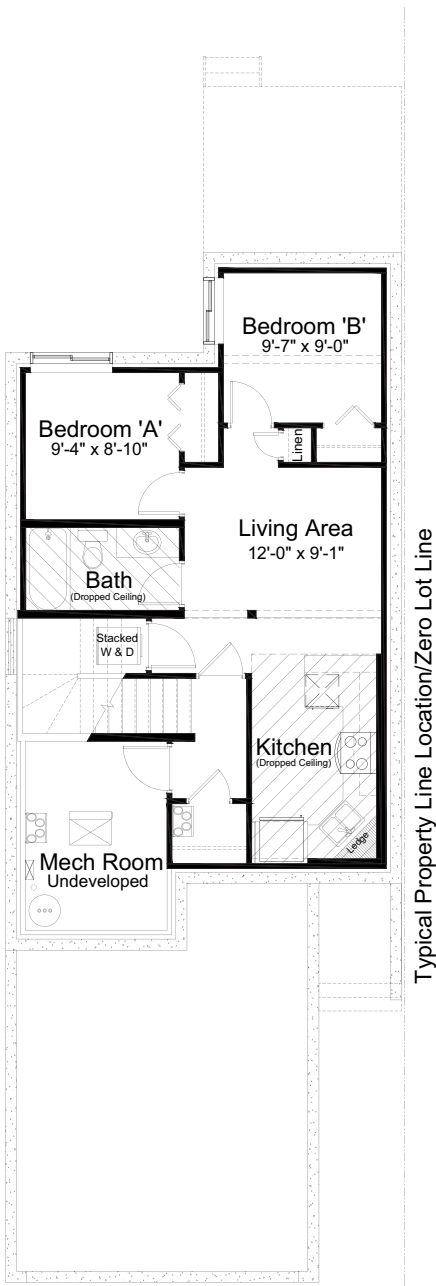
pre-planned options



Revised Entry Option



Kitchen/Bath Layout Option



Basement Suite Option  
619 sq. ft. of developed area

Edited: June 11, 2024  
The builder reserves the right to modify or change plans, specifications, features and prices without notice. Materials may be substituted with equivalent or better at the builder's sole discretion. All dimensions and sizes are approximate and are based on architectural measurements. As reverse, mirrored and/or flipped plans occur throughout the building, please see architectural plans if material to your decision to purchase. Renderings, furnishings and equipment shown are an artist's conception and are intended as a general reference only. Please see disclosure statement for specific offering details. E. & O.E.