

# QUICK POSSESSION



## EDISON II

3 Bed | 2.5 Bath | 1,716 sq. ft.

215 South Shore Court  
Chestermere, Alberta  
Block 6 | Lot 29

403-235-0012  
southshore@allistongroup.ca  
allistongroup.ca

# EDISON II

3 Bed

2.5 Bath

1,716 sq. ft.

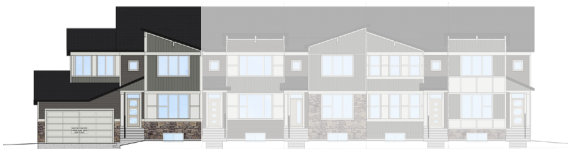
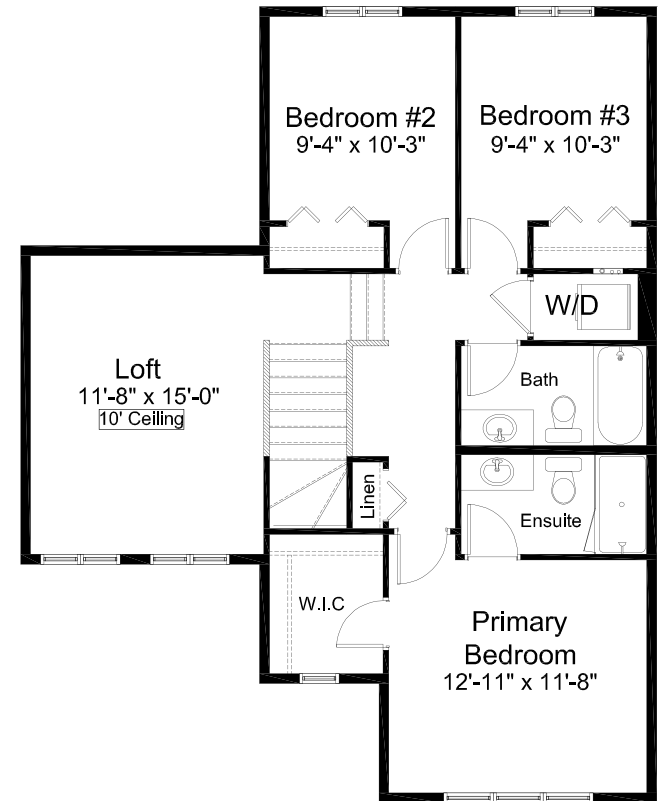
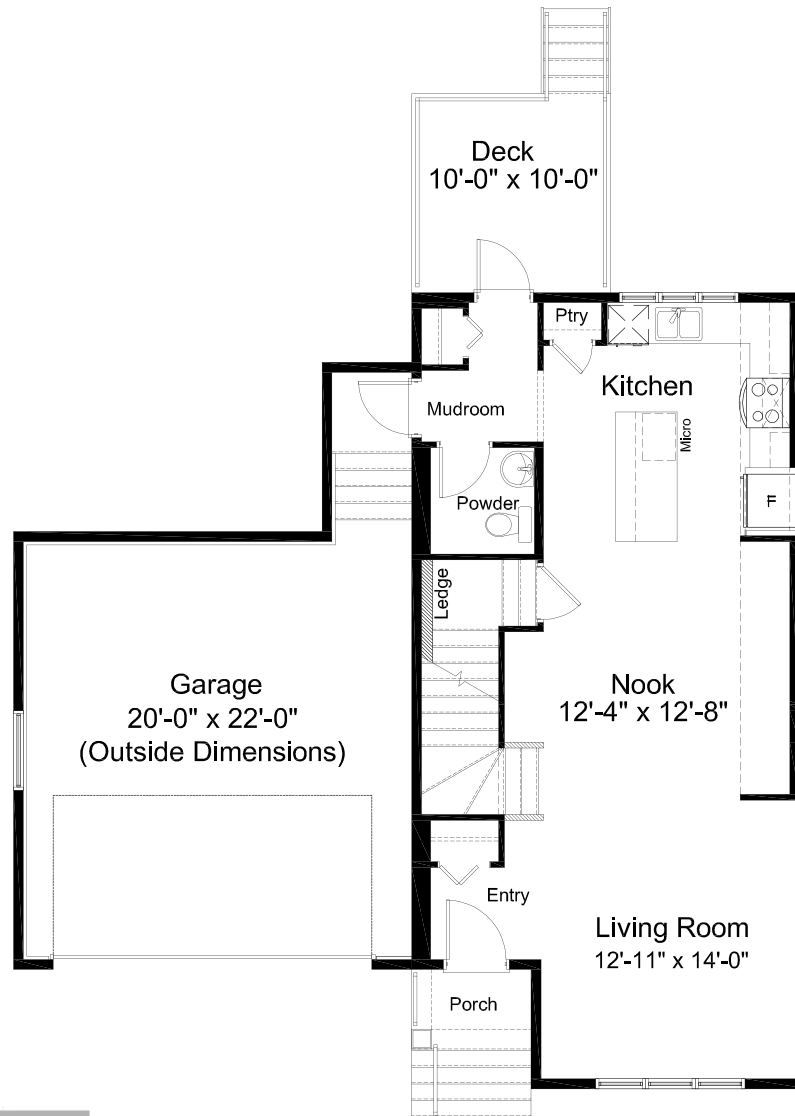
215 South Shore Court

Block 6 | Lot 29

- Open Concept Living Area
- Rear Kitchen Layout
- Luxury Vinyl Plank Flooring
- Luxury Vinyl Tile
- Stainless Steel Appliance Package
- Whirlpool Washer & Dryer Set
- Quartz Countertops Throughout
- Upper Floor Laundry
- Upper Floor Loft w/ 10ft Ceilings
- Fully Fenced and Landscaped
- Rear Deck
- Attached Double Car Garage
- Triple Pane Windows
- NO CONDO FEES!

Edited: February 14, 2024

The builder reserves the right to modify or change plans, specifications, features and prices without notice. Materials may be substituted with equivalent or better at the builder's sole discretion. All dimensions and sizes are approximate and are based on architectural measurements. As reverse, mirrored and/or flipped plans occur throughout the building, please see architectural plans if material to your decision to purchase. Renderings, furnishings and equipment shown are an artist's conception and are intended as a general reference only. Please see disclosure statement for specific offering details. E. & O.E.



ELEVATION

MAIN FLOOR 762 sq. ft.

UPPER FLOOR 954 sq. ft.