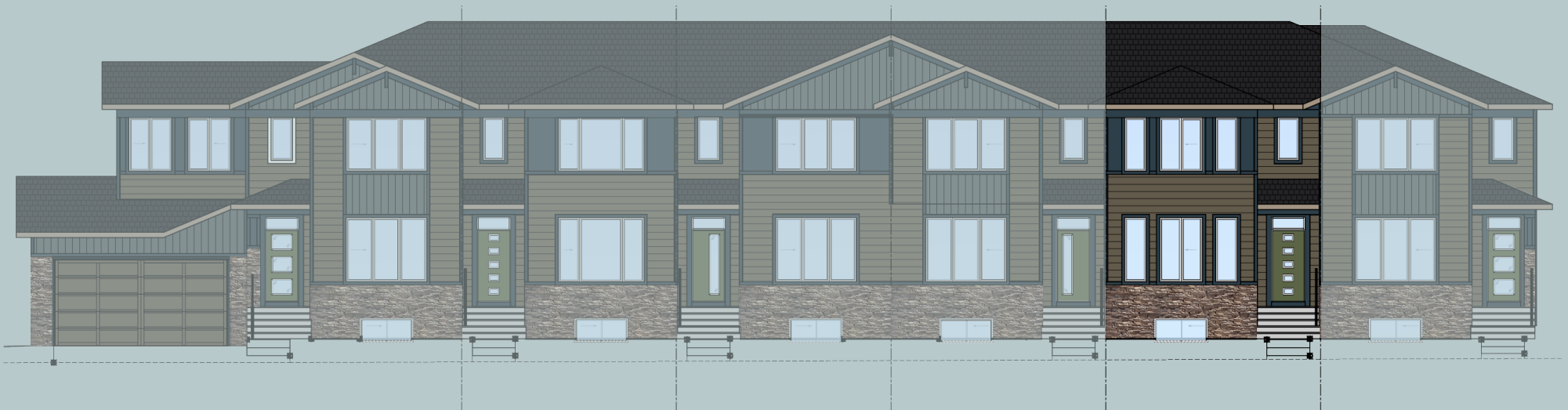


alliston  
AT HOME

# QUICK POSSESSION



## EDISON

3 Bed | 2.5 Bath | 1,522 sq. ft.

123 South Shore Court  
Chestermere, Alberta  
Block 6 | Lot 6

403-235-0012  
southshore@allistongroup.ca  
allistongroup.ca



# EDISON

3 Bed

2.5 Bath

1,522 sq. ft.

123 South Shore Court

Block 6 | Lot 6

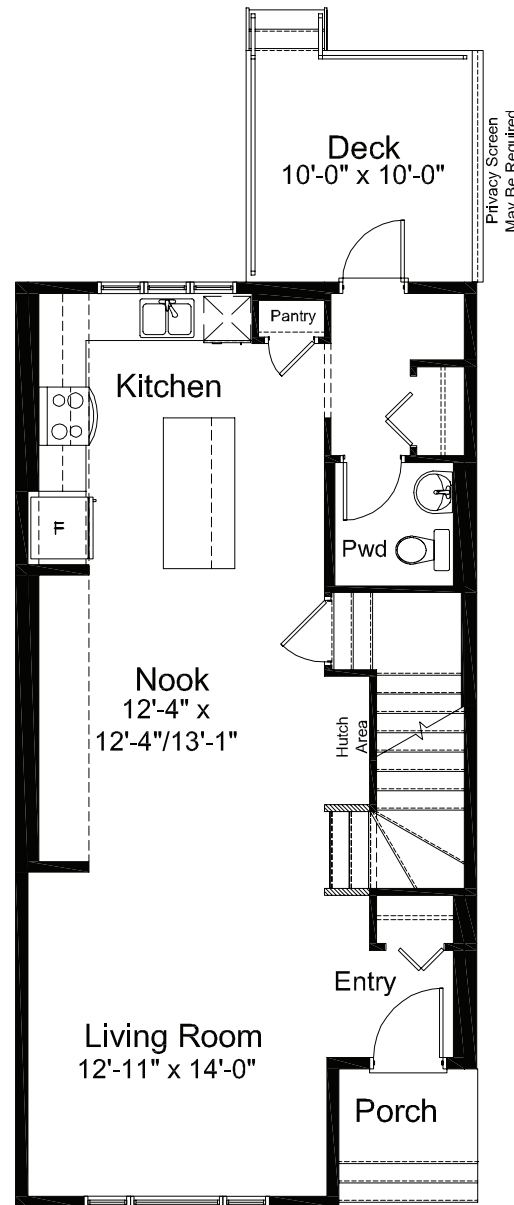
- Open Concept Living Area
- Kitchen/Nook Back Entrance Layout
- Luxury Vinyl Plank Flooring
- Luxury Vinyl Tile
- Stainless Steel Appliance Package
- Quartz Countertops Throughout
- Upper Floor Laundry
- Rear Deck
- Fully Fenced and Landscaped
- Detached Double Car Garage
- Triple Pane Windows
- NO CONDO FEES!

Edited: January 13, 2024

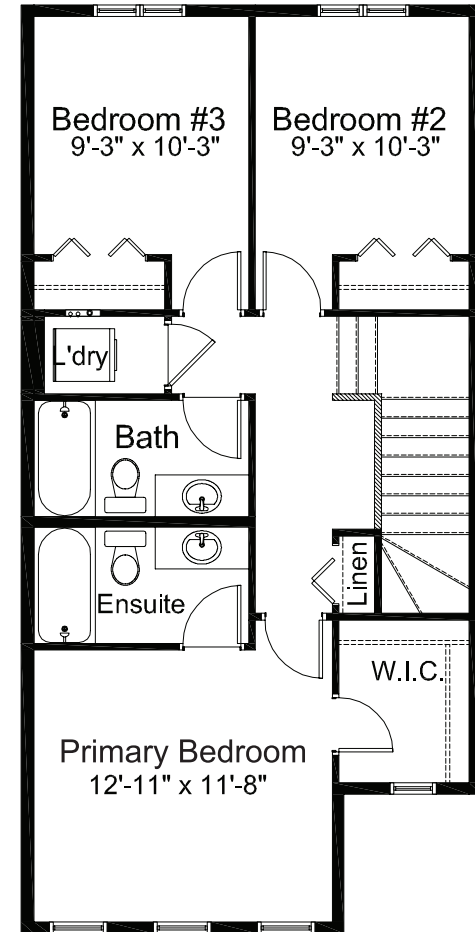
The builder reserves the right to modify or change plans, specifications, features and prices without notice. Materials may be substituted with equivalent or better at the builder's sole discretion. All dimensions and sizes are approximate and are based on architectural measurements. As reverse, mirrored and/or flipped plans occur throughout the building, please see architectural plans if material to your decision to purchase. Renderings, furnishings and equipment shown are an artist's conception and are intended as a general reference only. Please see disclosure statement for specific offering details. E. & O.E.



ELEVATION



MAIN FLOOR 761 sq. ft.



UPPER FLOOR 761 sq. ft.