

# alliston

AT HOME



## CYPRESS bungalow

### features

- Open Concept Living
- Side Drive Triple Car Garage
- Vaulted & Raised Ceiling
- Spacious Gourmet Kitchen
- Large Walk-in Kitchen Pantry
- Stainless Steel Appliance Package
- Quartz Countertops Throughout
- Mudroom
- Flex Room
- Covered Rear Deck
- Oversized Windows
- 5-piece Ensuite & WIC
- Laundry Room w/ Sink
- Fireplace in Great Room

1,927 sq. ft.

1 Bed

1.5 Bath



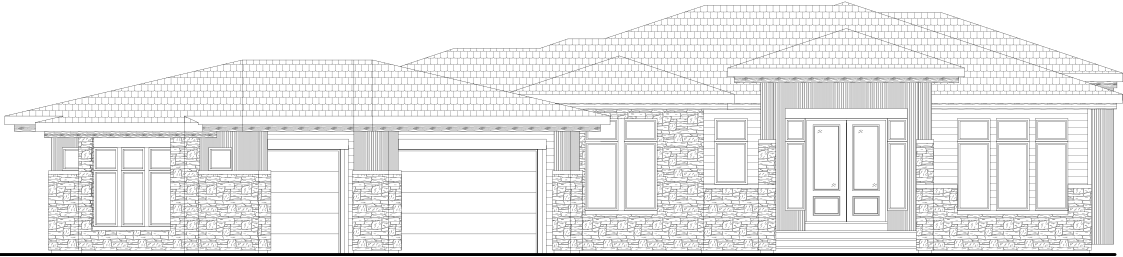
# CYPRESS BUNGALOW

1 Bed

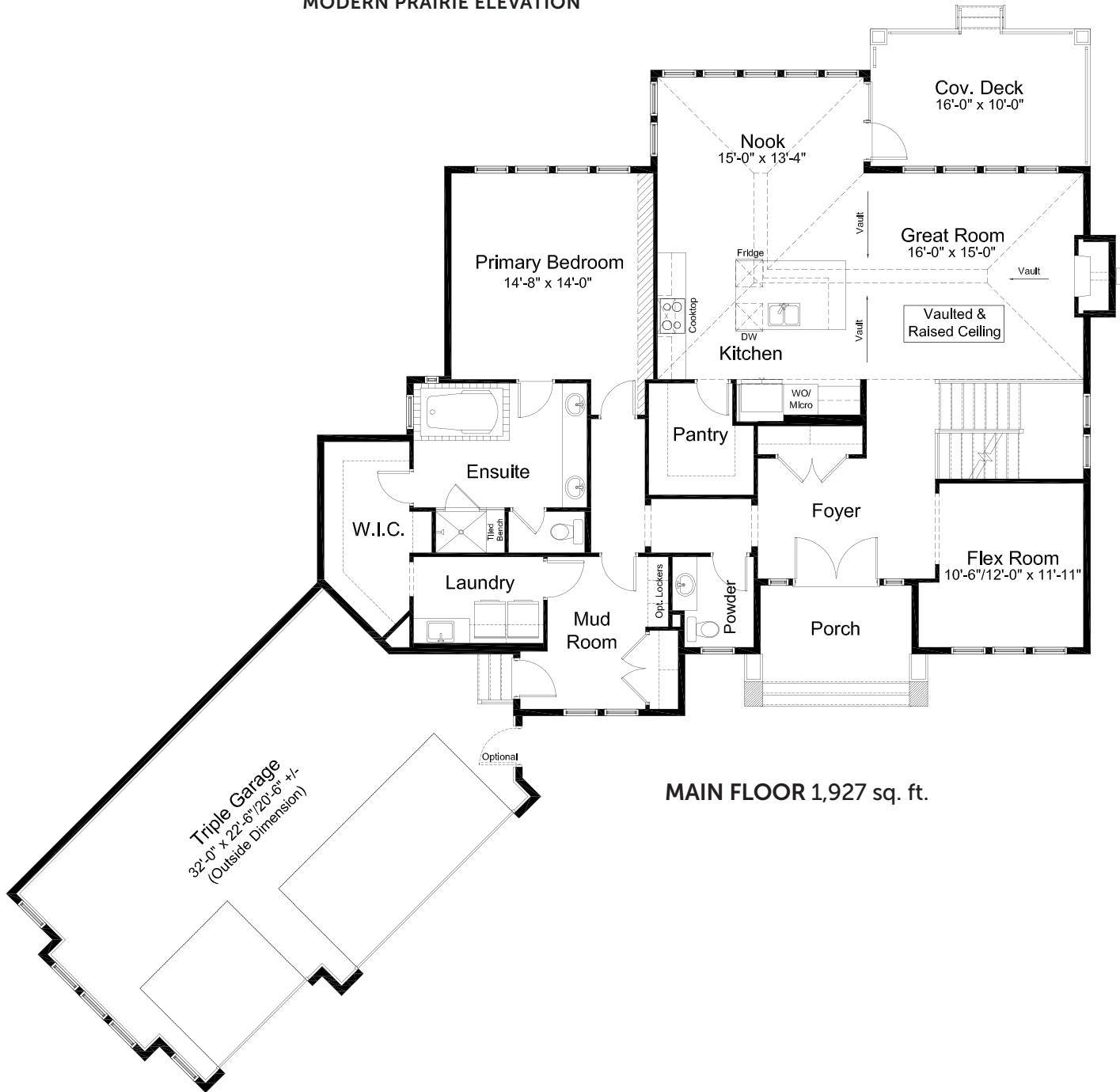
1.5 Bath

1,927 sq. ft.

## standard plan



MODERN PRAIRIE ELEVATION



MAIN FLOOR 1,927 sq. ft.

all

# CYPRESS BUNGALOW

1 Bed

1.5 Bath

1,927 sq. ft.

## pre-planned options

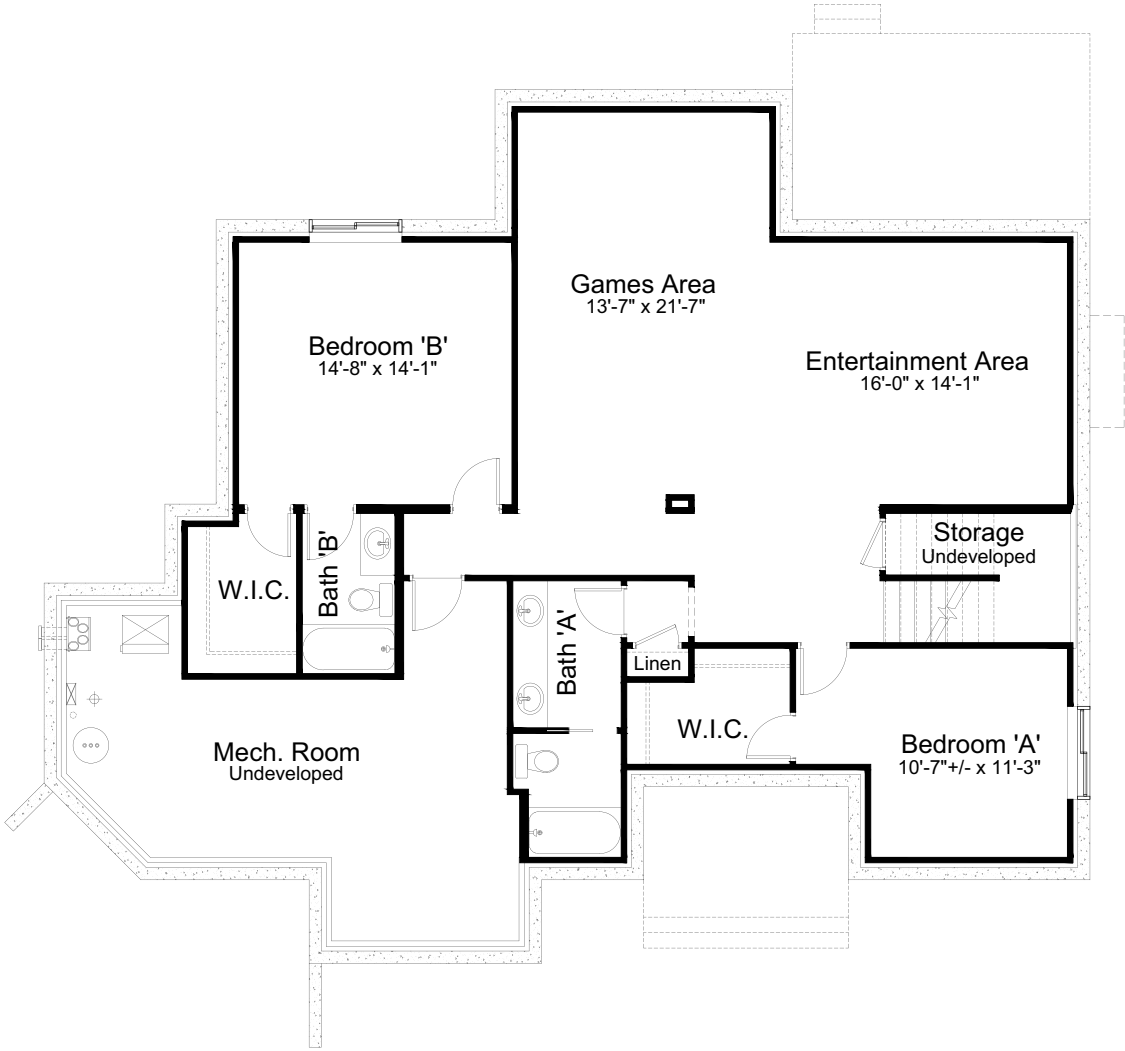


Two Bedroom & Full Bath Option  
1,927 sq. ft.

more options →



pre-planned options



**2 Bedroom Basement Development Option**  
1,331 sq. ft.

Edited: March 26, 2024  
The builder reserves the right to modify or change plans, specifications, features and prices without notice. Materials may be substituted with equivalent or better at the builder's sole discretion. All dimensions and sizes are approximate and are based on architectural measurements. As reverse, mirrored and/or flipped plans occur throughout the building, please see architectural plans if material to your decision to purchase. Renderings, furnishings and equipment shown are an artist's conception and are intended as a general reference only. Please see disclosure statement for specific offering details. E. & O.E.