

# alliston

AT HOME



## BERGAMOT

### features

- Open Concept Living
- Attached Triple Car Garage
- Open to Above Great Room
- Spacious Gourmet Kitchen
- Large Walk-in Kitchen Pantry
- Stainless Steel Appliance Package
- Quartz Countertops Throughout
- Flex Room
- Covered Rear Deck
- Oversized Windows
- 5-piece Ensuite & WIC
- Upper Floor Laundry Room
- Fireplace in Great Room
- Upper Floor Bonus Room
- Mudroom w/ Built-in Storage

2,744 sq. ft.

3 Bed

2.5 Bath



BERGAMOT

3 Bed      2.5 Bath      2,744 sq. ft.

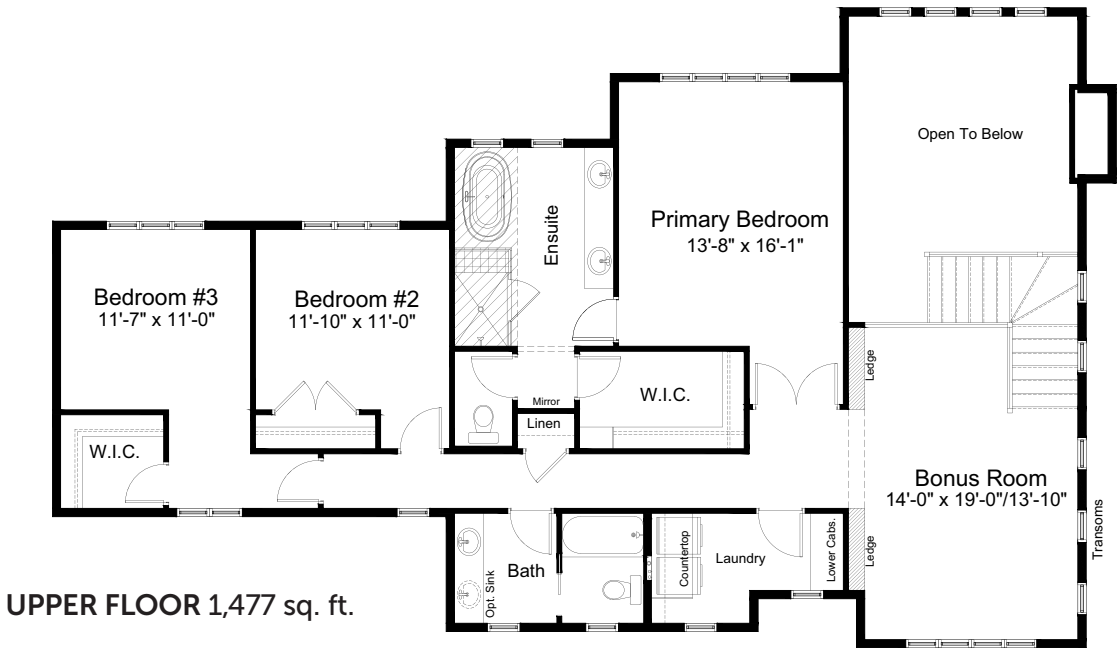
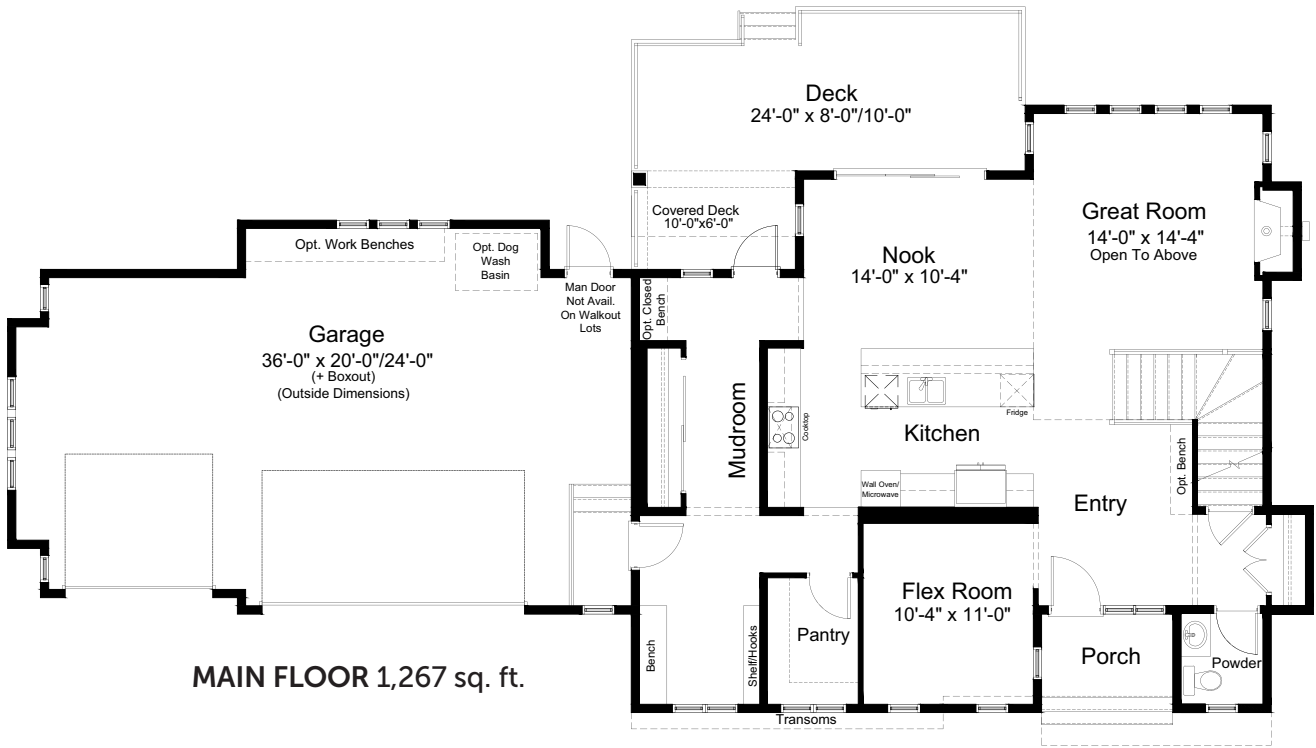
standard plan



FARMHOUSE FRONT ELEVATION



FARMHOUSE REAR ELEVATION

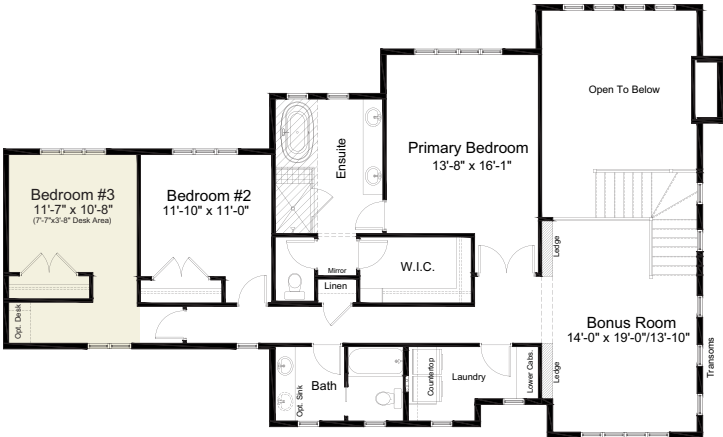




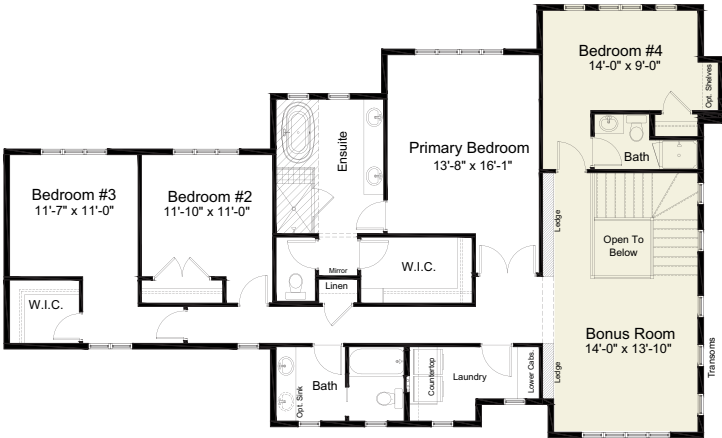
BERGAMOT

3 Bed 2.5 Bath 2,744 sq. ft.

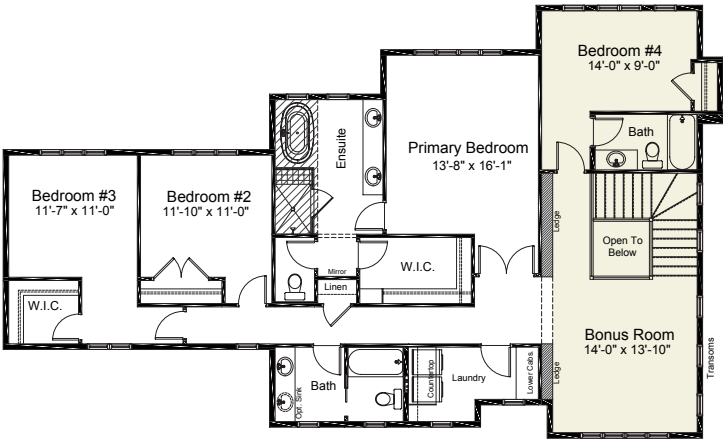
pre-planned options



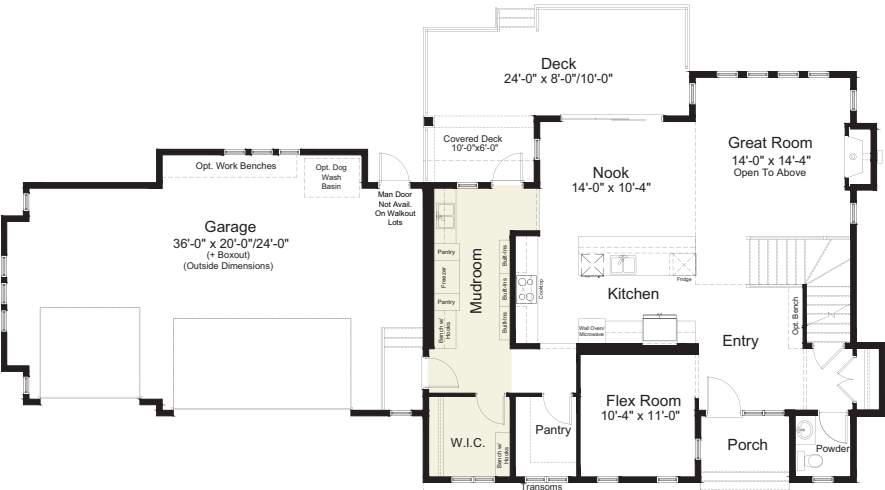
Bedroom #3 Desk Option  
upepr floor 1,477 sq. ft.



4 Bedroom Option A  
upper floor 1,698 sq. ft.



4 Bedroom Option B  
upper floor 1,698 sq. ft.

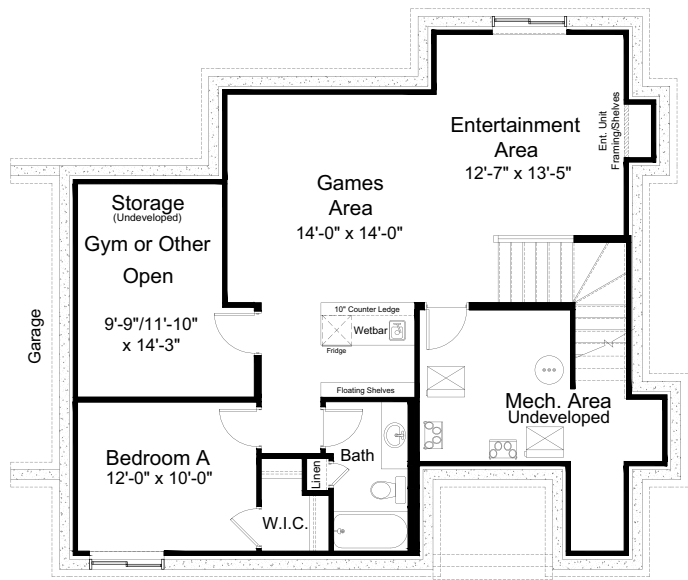


Mudroom Option  
main floor 1,267 sq. ft.

more options →



pre-planned options

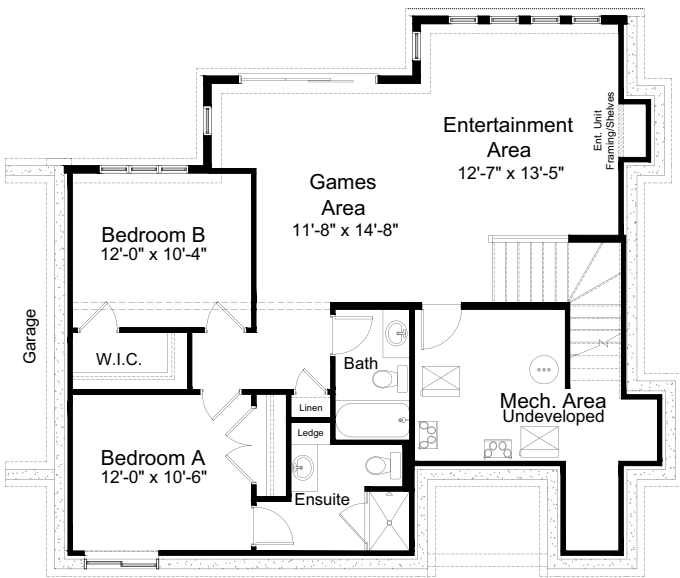


**1 Bedroom Basement Development Option**

1 Bedroom w/ Undeveloped Space Option - 755 sq. ft.  
1 Bedroom + Bonus Space Option - 920 sq. ft.



**2 Bedroom Basement Development Option**  
920 sq. ft.



**2 Bedroom for Walkout Basement Development Option**  
951 sq. ft.

Edited: June 11, 2024  
The builder reserves the right to modify or change plans, specifications, features and prices without notice. Materials may be substituted with equivalent or better at the builder's sole discretion. All dimensions and sizes are approximate and are based on architectural measurements. As reverse, mirrored and/or flipped plans occur throughout the building, please see architectural plans if material to your decision to purchase. Renderings, furnishings and equipment shown are an artist's conception and are intended as a general reference only. Please see disclosure statement for specific offering details. E. & O.E.