



Laurel

alliston  
AT HOME

3 Bed | 2.5 Bath | 1,767 sq. ft.

102 & 106 south shore court  
chestermere, alberta

403-235-0012  
southshore@allistongroup.ca

 **South Shore**  
CHESTERMERE

# LAUREL

3 Bed

2.5 Bath

1,767 sq. ft.

- Open Concept Living Area
- Central Kitchen Layout
- Luxury Vinyl Plank Flooring
- Luxury Vinyl Tile
- Stainless Steel Appliance Package
- Quartz Countertops Throughout
- Upper Floor Laundry
- Upper Floor Loft
- Spacious W.I.C.
- Rear Deck
- Attached Double Car Garage
- Triple Pane Windows

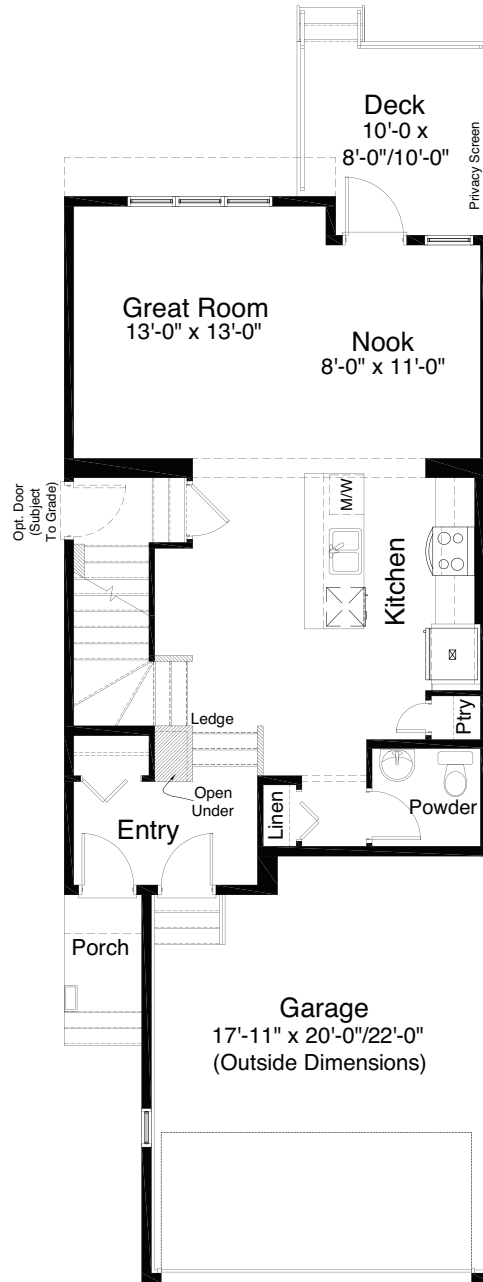


Laurel Maple

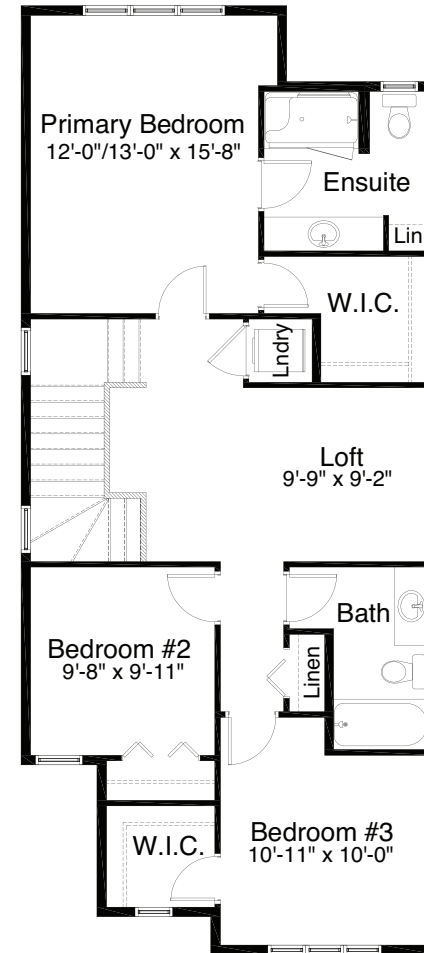
## ALBERTA CRAFTSMAN ELEVATION

Edited: November 7, 2023

The builder reserves the right to modify or change plans, specifications, features and prices without notice. Materials may be substituted with equivalent or better at the builder's sole discretion. All dimensions and sizes are approximate and are based on architectural measurements. As reverse, mirrored and/or flipped plans occur throughout the building, please see architectural plans if material to your decision to purchase. Renderings, furnishings and equipment shown are an artist's conception and are intended as a general reference only. Please see disclosure statement for specific offering details. E. & O.E.

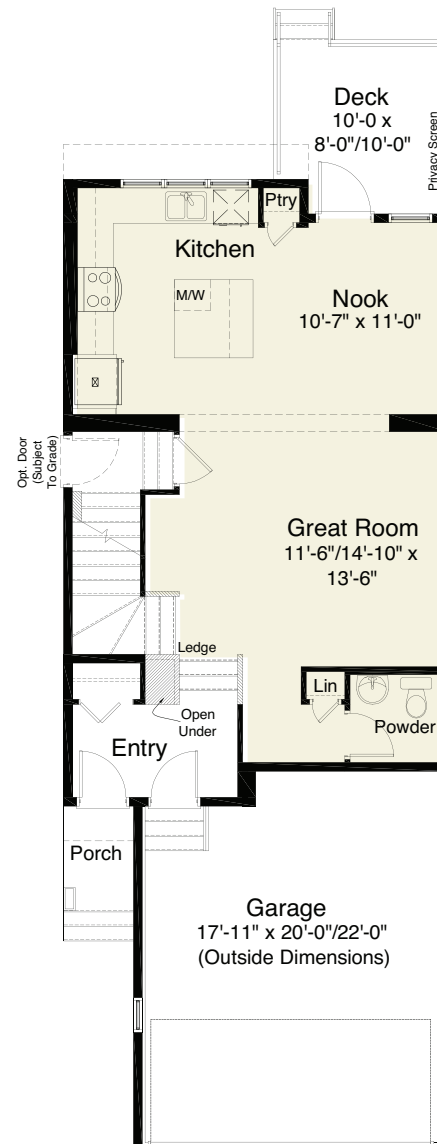


MAIN FLOOR 749 sq. ft.

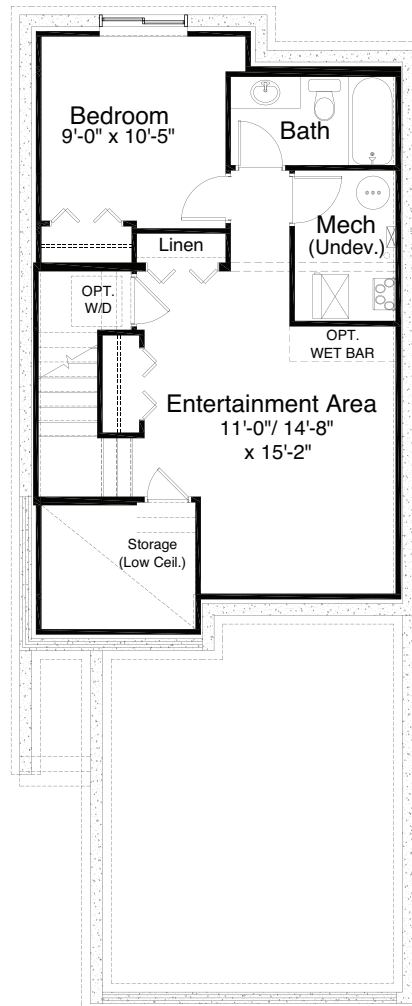


UPPER FLOOR 920 sq. ft.

## pre-planned options



**Rear Kitchen Layout Option**  
753 sq. ft.



**Basement**  
**Development Option**  
 480 sq. ft. of developed area

Edited: November 7, 2023

The builder reserves the right to modify or change plans, specifications, features and prices without notice. Materials may be substituted with equivalent or better at the builder's sole discretion. All dimensions and sizes are approximate and are based on architectural measurements. As reverse, mirrored and/or flipped plans occur throughout the building, please see architectural plans if material to your decision to purchase. Renderings, furnishings and equipment shown are an artist's conception and are intended as a general reference only. Please see disclosure statement for specific offering details. E. & O.E.