

alliston

AT HOME



modern elevation shown

MAPLE duplex

1,803 sq. ft.

3 Bed

2.5 Bath

features

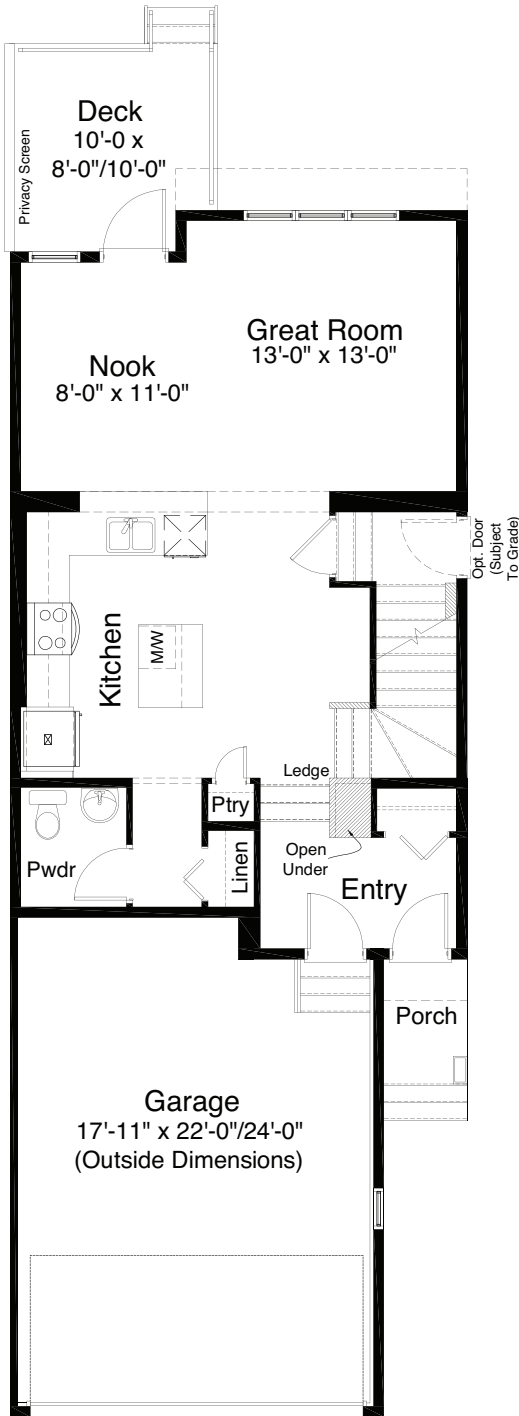
- Open Concept Living Area
- Central Kitchen Layout
- Luxury Vinyl Plank Flooring
- Luxury Vinyl Tile
- Stainless Steel Appliance Package
- Quartz Countertops Throughout
- Upper Floor Laundry
- Upper Floor Loft
- Spacious W.I.C
- Rear Deck
- Attached Double Car Garage
- Triple Pane Windows



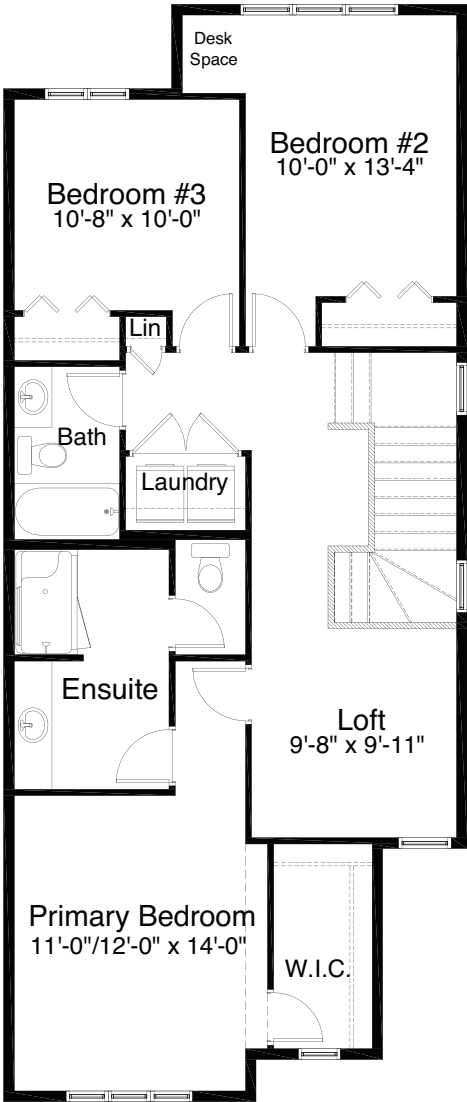
MAPLE DUPLEX

3 Bed 2.5 Bath 1,803 sq. ft.

standard plan



MAIN FLOOR 753 sq. ft.



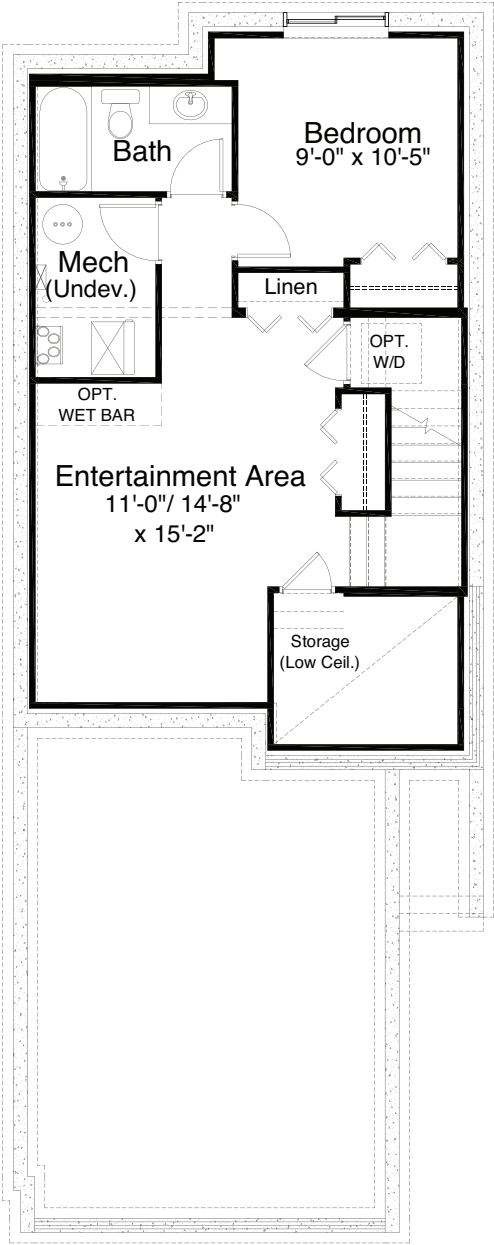
UPPER FLOOR 1,050 sq. ft.



MAPLE DUPLEX

3 Bed 2.5 Bath 1,803 sq. ft.

pre-planned option



**Basement
Development Option**
480 sq. ft. of developed area



MAPLE DUPLEX

3 Bed

2.5 Bath

1,803 sq. ft.

elevation



ALBERTA CRAFTSMAN ELEVATION

Edited: October 13, 2025
The builder reserves the right to modify or change plans, specifications, features and prices without notice. Materials may be substituted with equivalent or better at the builder's sole discretion. All dimensions and sizes are approximate and are based on architectural measurements. As reverse, mirrored and/or flipped plans occur throughout the building, please see architectural plans if material to your decision to purchase. Renderings, furnishings and equipment shown are an artist's conception and are intended as a general reference only. Please see disclosure statement for specific offering details. E. & O.E.