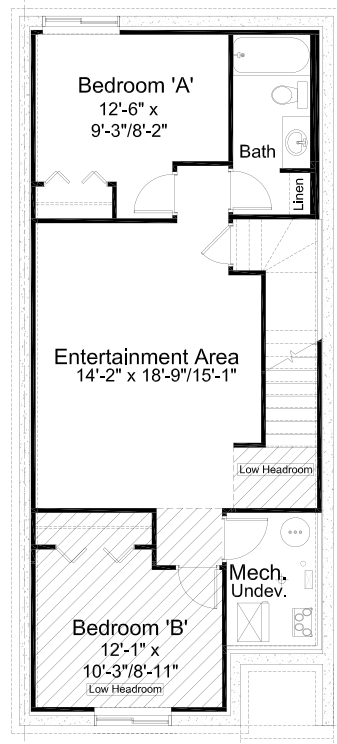


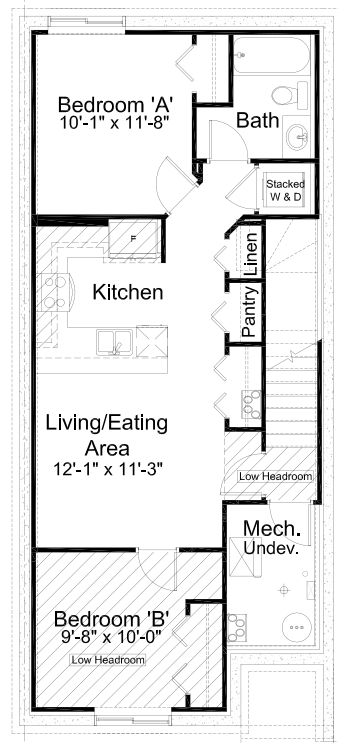
all

FAIRVIEW DUPLEX 20' wide 3 Bed 2.5 Bath 1,848 sq. ft. & 1,792 sq. ft.

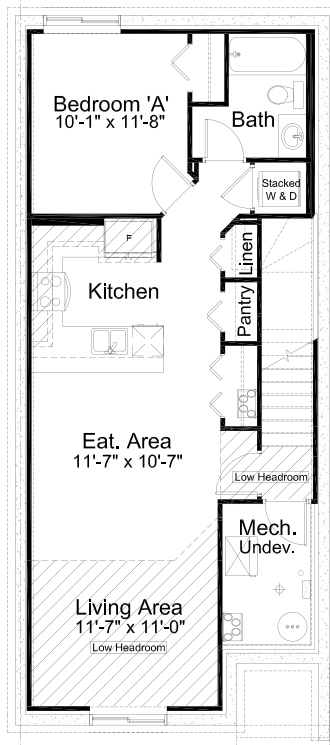
pre-planned options



Basement Development Option
690 sq. ft. of developed area



2 Bedroom Basement Suite Option
694 sq. ft. of developed area



1 Bedroom Basement Suite Option
694 sq. ft. of developed area



Main Floor w/ Bedroom/Full Bath Option
896 sq. ft. of developed area

alliston

AT HOME



FAIRVIEW duplex

1,848 & 1,792 sq. ft.

3 Bed

2.5 Bath

features

- Open Concept Living Area
- Luxury Vinyl Plank Flooring
- Luxury Vinyl Tile
- Stainless Steel Appliance Package
- Quartz Countertops Throughout
- Upper Floor Laundry Room
- Spacious Ensuite and W.I.C.
- 11ft Ceilings in Flex Room
- Front Entry W.I.C.
- Upper Floor Loft
- Rear Deck
- Triple Pane Windows

Edited: June 3, 2024
The builder reserves the right to modify or change plans, specifications, features and prices without notice. Materials may be substituted with equivalent or better at the builder's sole discretion. All dimensions and sizes are approximate and are based on architectural measurements. As reverse, mirrored and/or flipped plans occur throughout the building, please see architectural plans if material to your decision to purchase. Renderings, furnishings and equipment shown are an artist's conception and are intended as a general reference only. Please see disclosure statement for specific offering details. E. & O.E.

Tillotson

587-757-8503

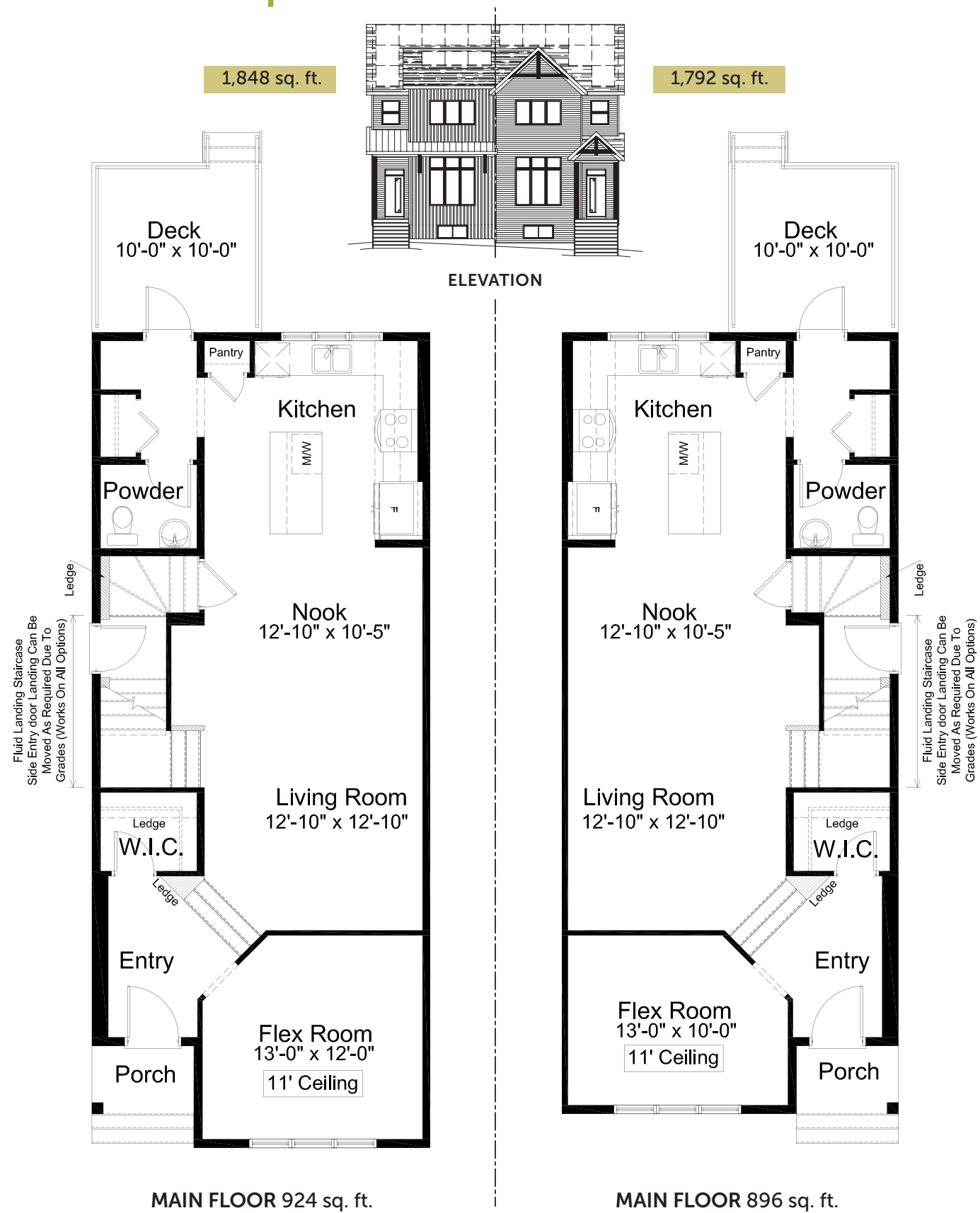
tillotson@allistongroup.ca

all

FAIRVIEW DUPLEX

20' wide 3 Bed 2.5 Bath 1,848 sq. ft. & 1,792 sq. ft.

standard plan



all

FAIRVIEW DUPLEX

20' wide 3 Bed 2.5 Bath 1,848 sq. ft. & 1,792 sq. ft.

standard plan

