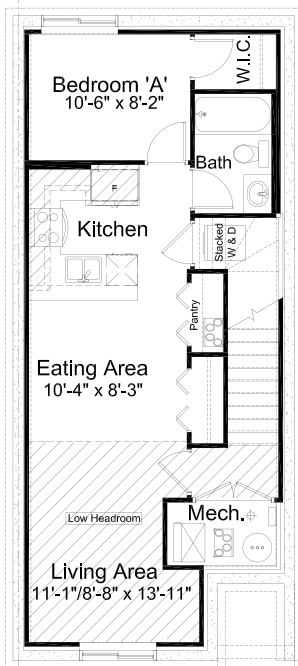


all

FRANKLIN DUPLEX 18' wide 3 Bed 2.5 Bath 1,524 sq. ft. & 1,472 sq. ft.

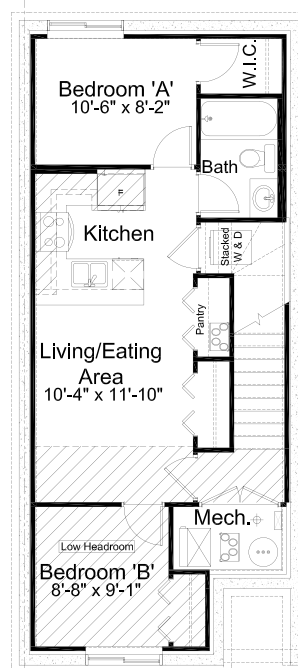
### pre-planned options



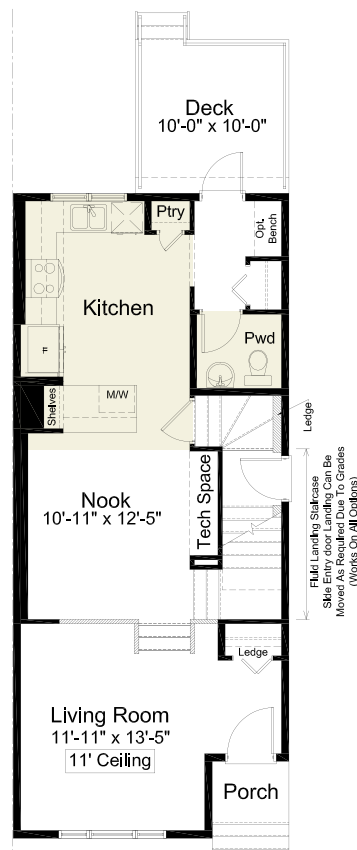
**1 Bedroom Secondary Suite Option 1**  
555 sq. ft. of developed area



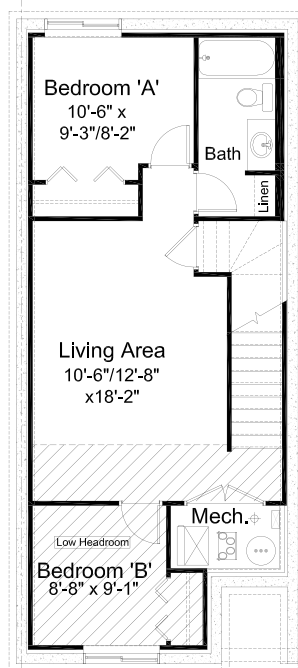
**1 Bedroom Secondary Suite Option 2**  
555 sq. ft. of developed area



**2 Bedroom Secondary Suite**  
555 sq. ft. of developed area



**Revised Kitchen Option**  
main floor: 731 sq. ft.



**2 Bedroom Basement Development Option**  
555 sq. ft. of developed area

# alliston

AT HOME



## FRANKLIN duplex

1,524 & 1,472 sq. ft.

3 Bed

2.5 Bath

### features

- Open Concept Living Area
- Luxury Vinyl Plank Flooring
- Luxury Vinyl Tile
- Stainless Steel Appliance Package
- Quartz Countertops Throughout
- Upper Floor Laundry
- Spacious W.I.C
- 11ft Ceilings in Living Room
- Rear Deck
- Triple Pane Windows

Tillotson

587-757-8503

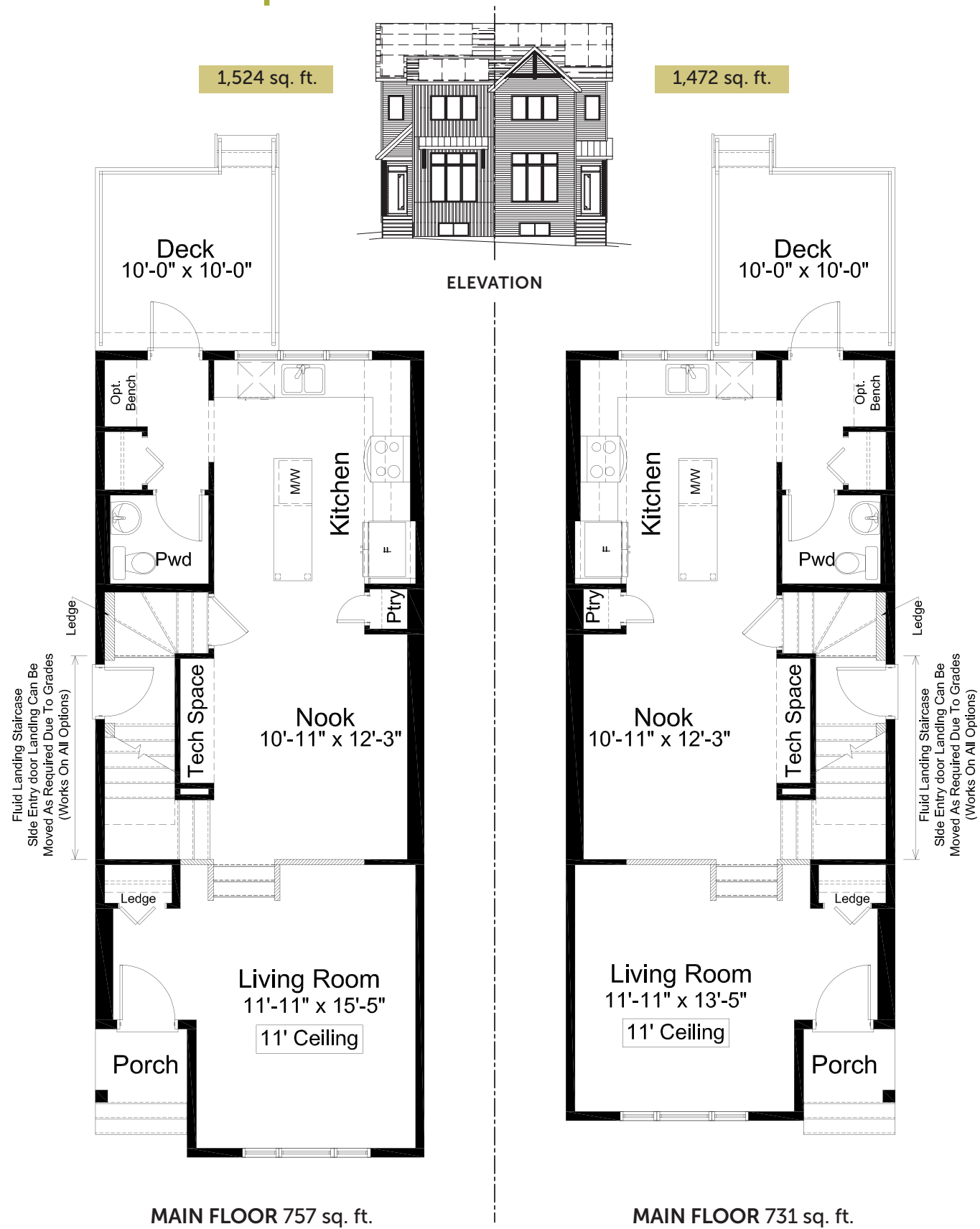
tillotson@allistongroup.ca

Edited: June 3, 2024  
The builder reserves the right to modify or change plans, specifications, features and prices without notice. Materials may be substituted with equivalent or better at the builder's sole discretion. All dimensions and sizes are approximate and are based on architectural measurements. As reverse, mirrored and/or flipped plans occur throughout the building, please see architectural plans if material to your decision to purchase. Renderings, furnishings and equipment shown are an artist's conception and are intended as a general reference only. Please see disclosure statement for specific offering details. E. & O.E.

all

FRANKLIN DUPLEX 18' wide 3 Bed 2.5 Bath 1,524 sq. ft. & 1,472 sq. ft.

### standard plan



all

FRANKLIN DUPLEX 18' wide 3 Bed 2.5 Bath 1,524 sq. ft. & 1,472 sq. ft.

### standard plan

