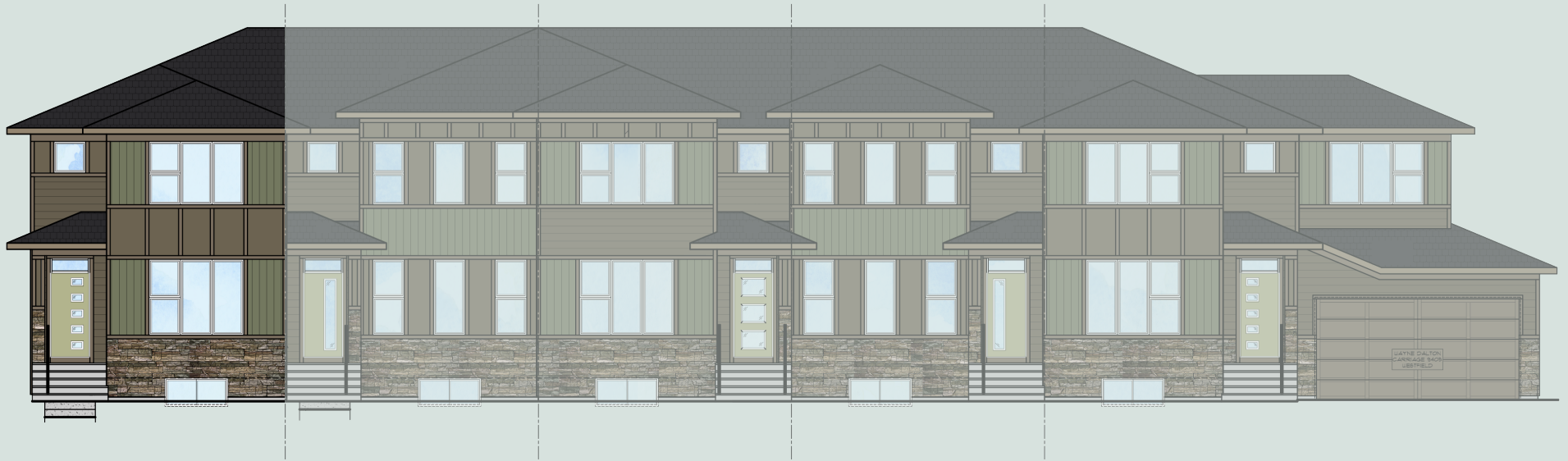


# QUICK POSSESSION



## WHITNEY

3 Bed | 2.5 Bath | 1,602 sq. ft.

235 South Shore Court  
Chestermere, Alberta  
Block 6 | Lot 34

403-235-0012  
southshore@allistongroup.ca  
allistongroup.ca



# WHITNEY

3 Bed

2.5 Bath

1,602 sq. ft.

235 South Shore Court

Block 6 | Lot 34

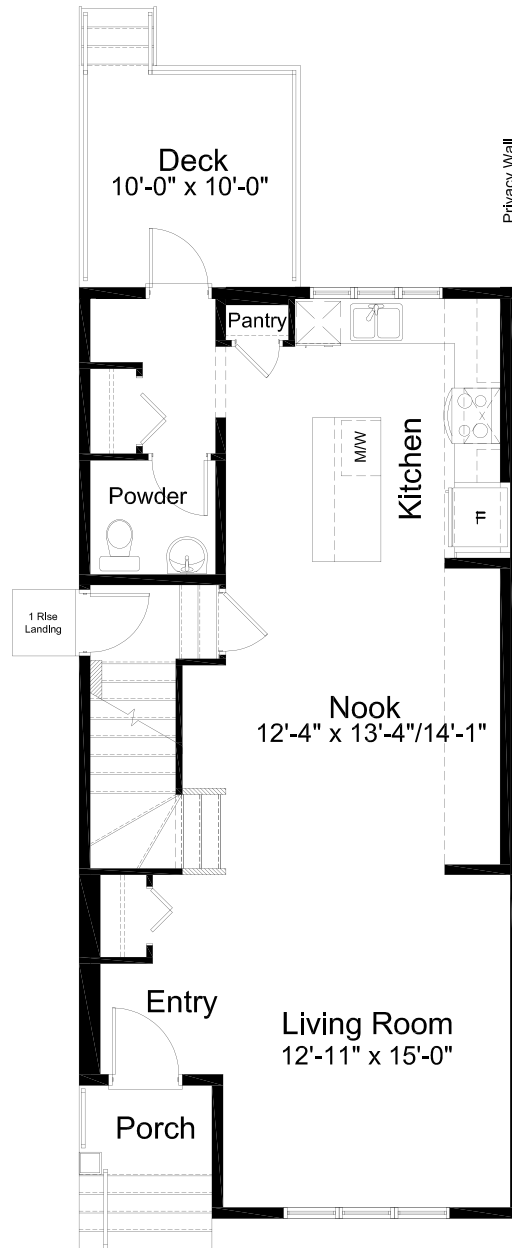
- Open Concept Living Area
- Kitchen/Nook Back Entrance Layout
- Luxury Vinyl Plank Flooring
- Luxury Vinyl Tile
- Stainless Steel Appliance Package
- Quartz Countertops Throughout
- Upper Floor Laundry
- Rear Deck
- Side Entry
- Fully Fenced and Landscaped
- Detached Double Car Garage
- Triple Pane Windows
- NO CONDO FEES!

Edited: August 27, 2024

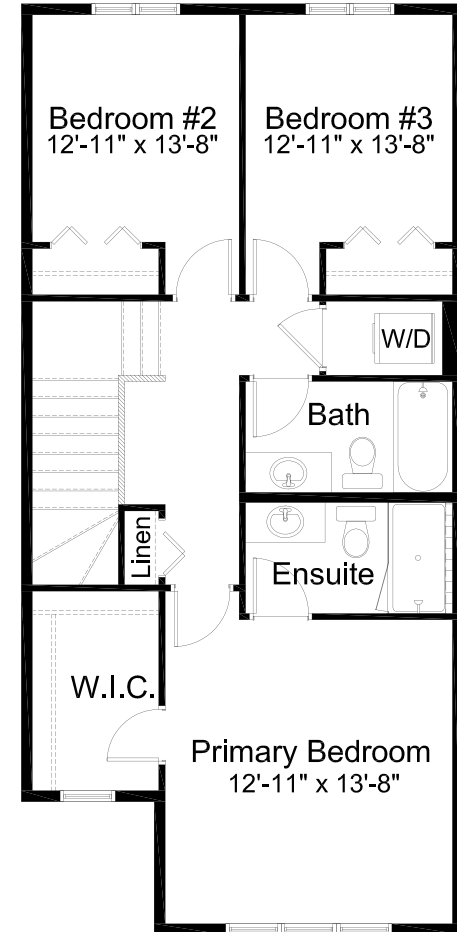
The builder reserves the right to modify or change plans, specifications, features and prices without notice. Materials may be substituted with equivalent or better at the builder's sole discretion. All dimensions and sizes are approximate and are based on architectural measurements. As reverse, mirrored and/or flipped plans occur throughout the building, please see architectural plans if material to your decision to purchase. Renderings, furnishings and equipment shown are an artist's conception and are intended as a general reference only. Please see disclosure statement for specific offering details. E. & O.E.



ELEVATION



MAIN FLOOR 801 sq. ft.



UPPER FLOOR 801 sq. ft.

**WHITNEY**

3 Bed | 2.5 Bath | 1,602 sq. ft.

235 South Shore Court  
Chestermere, Alberta  
Block 6 | Lot 34

1.



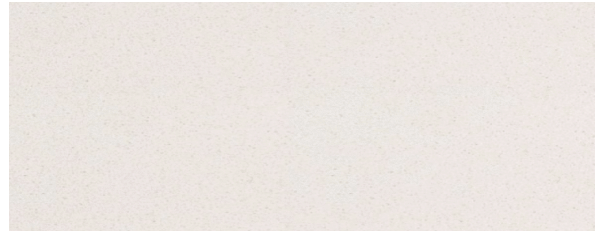
2.



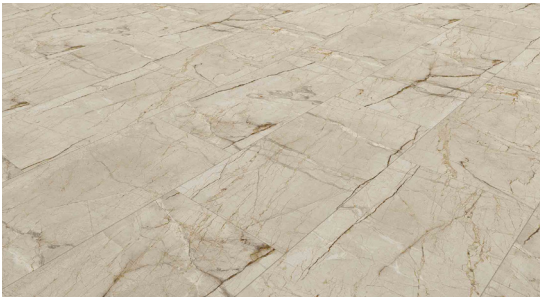
3.



4.



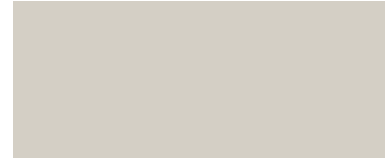
5.



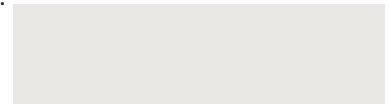
6.



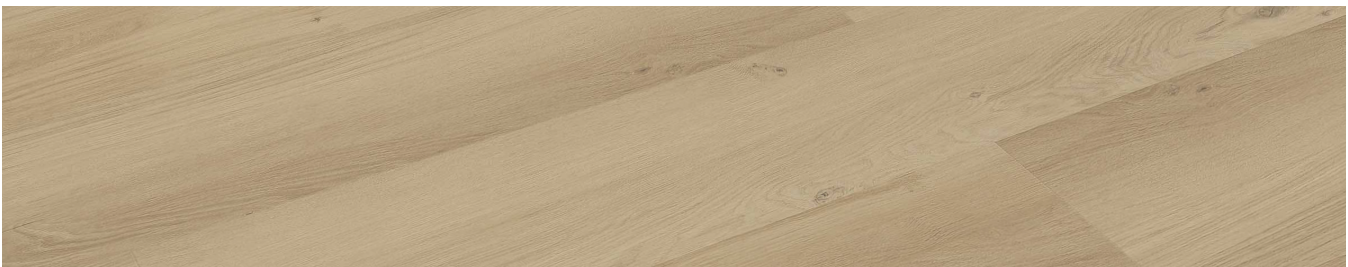
7.



8.



9.



**SELECTION DETAILS**

- |   |  |
|---|--|
| 1. Kitchen & Bath Cabinets - Shaker Style - Euro White          | 6. Carpet - Mohawk Tectonic - 829 Havana         |
| 2. Wall Tile - Ceratec Tile - Essential Greige Matte - 4" x 16" | 7. Cloverdale Artisan Paint - Wall: CA032 Smoky  |
| 3. Hardware - Richelieu - Metal Pull 7348 - Brushed Nickel      | 8. Cloverdale Artisan Paint - Trim: CA019 Summit |
| 4. Countertops - Jadestone Quartz - Baffin Bay                  | 9. Luxury Vinyl Plank - Unifloor - EC81105 Iris  |
| 5. Luxury Vinyl Tile - Unifloor - EC72938 Milano - 12" x 24"    |  |

**Note:** Products featured in our catalogue may differ from physical samples. Variations in colour, texture, and appearance can occur due to various factors, including differences in manufacturing batches, natural variations in materials, and the influence of lighting in photography and printing. We make every effort to ensure that our catalogue accurately represents our products, but we cannot guarantee an exact match to physical samples.

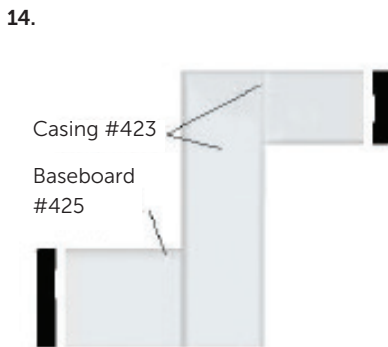
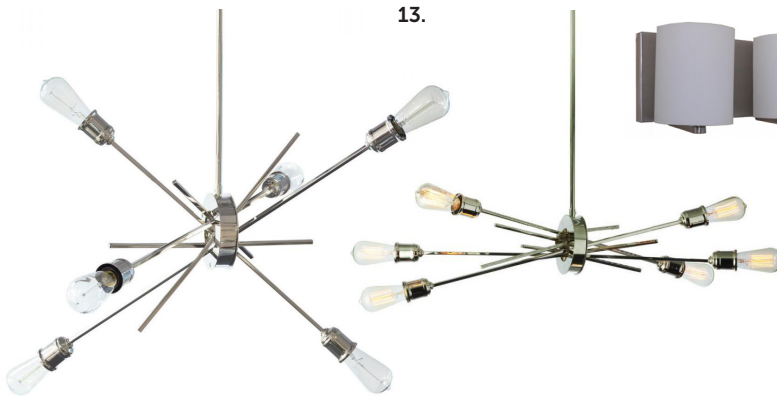
WHITNEY

3 Bed | 2.5 Bath | 1,602 sq. ft.

235 South Shore Court

Chestermere, Alberta

Block 6 | Lot 34



SELECTION DETAILS

10. Kitchen Sink - Blanco Essential U2 400008

11. Kitchen Faucet - Delta Osler 976LF 1H - Polished Chrome

12. Bathroom Plumbing - Delta Wynne Collection - Chrome

13. Lighting - Standard Lighting Package - Silver Collection

14. Casing - Modern Baseboard & Casing

15. Exterior Door Hardware - Weiser Troy Passage with Deadbolt

16. Interior Door Hardware - Weiser Satin Nickel Collection

17. Interior Door - Benton 5 Panel Raised Door

**Note:** Products featured in our catalogue may differ from physical samples. Variations in colour, texture, and appearance can occur due to various factors, including differences in manufacturing batches, natural variations in materials, and the influence of lighting in photography and printing. We make every effort to ensure that our catalogue accurately represents our products, but we cannot guarantee an exact match to physical samples.