

alliston

AT HOME



BERKELEY

features

- Open Concept Living
- Spacious Kitchen Layout
- Walk-thru Kitchen Pantry
- Open-to-above Entry
- Stainless Steel Appliance Package
- Quartz Countertops Throughout
- Mudroom
- Spacious Ensuite and W.I.C.
- Upper Floor Bonus Room
- Upper Floor Laundry Room
- Triple Pane Windows
- Attached Double Car Garage

2,015 sq. ft.

3 Bed

2.5 Bath

Iron Landing
CROSSFIELD, AR

587-893-3870

ironlanding@allistongroup.ca



BERKELEY

3 Bed

2.5 Bath

2,015 sq. ft.

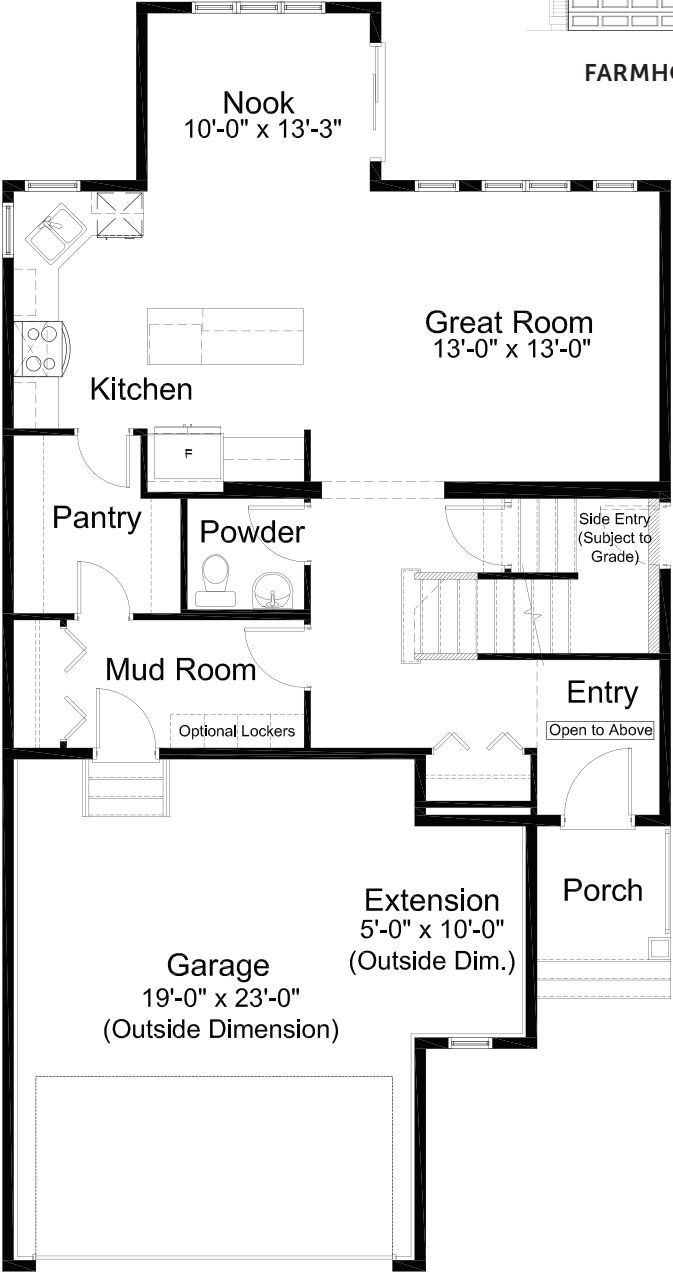
standard plan



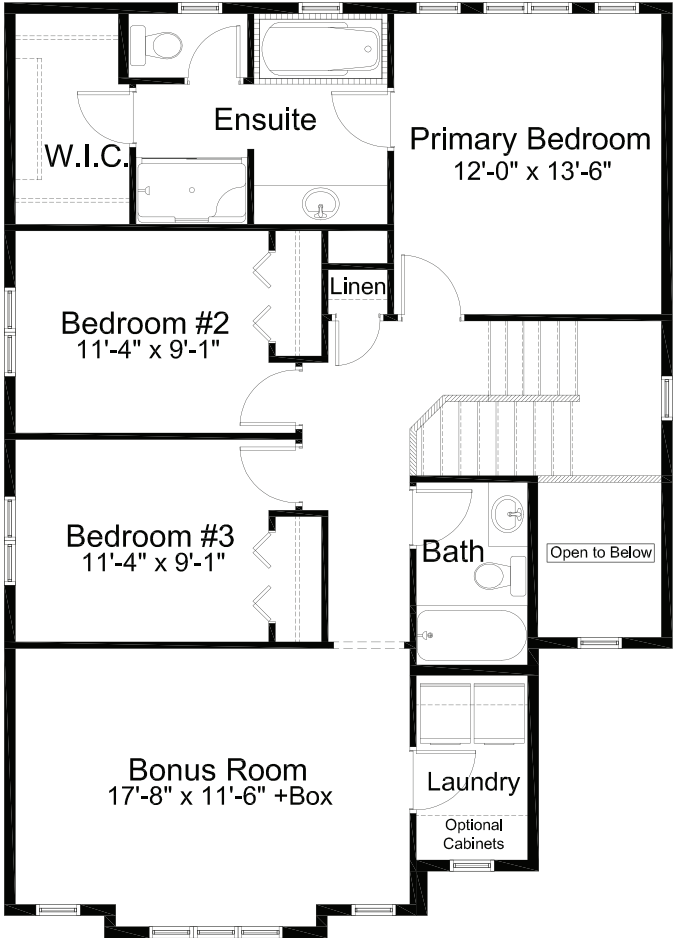
FARMHOUSE ELEVATION



PRAIRIE ELEVATION



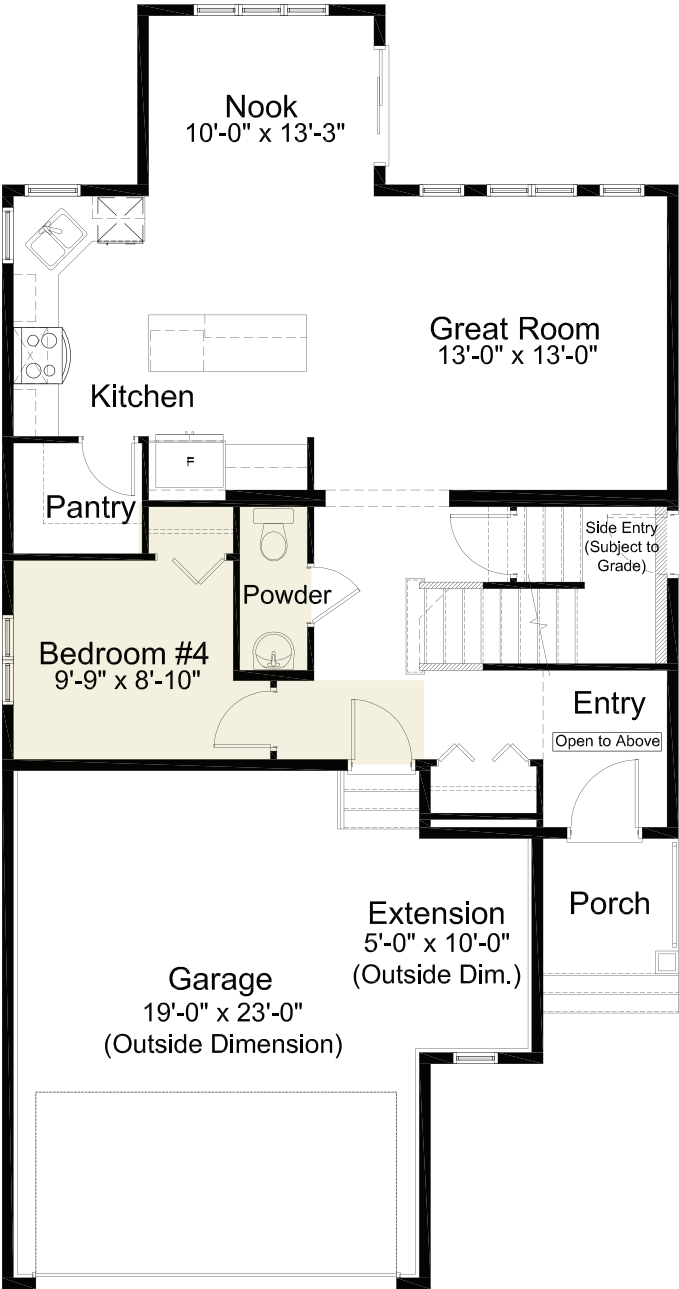
MAIN FLOOR 902 sq. ft.



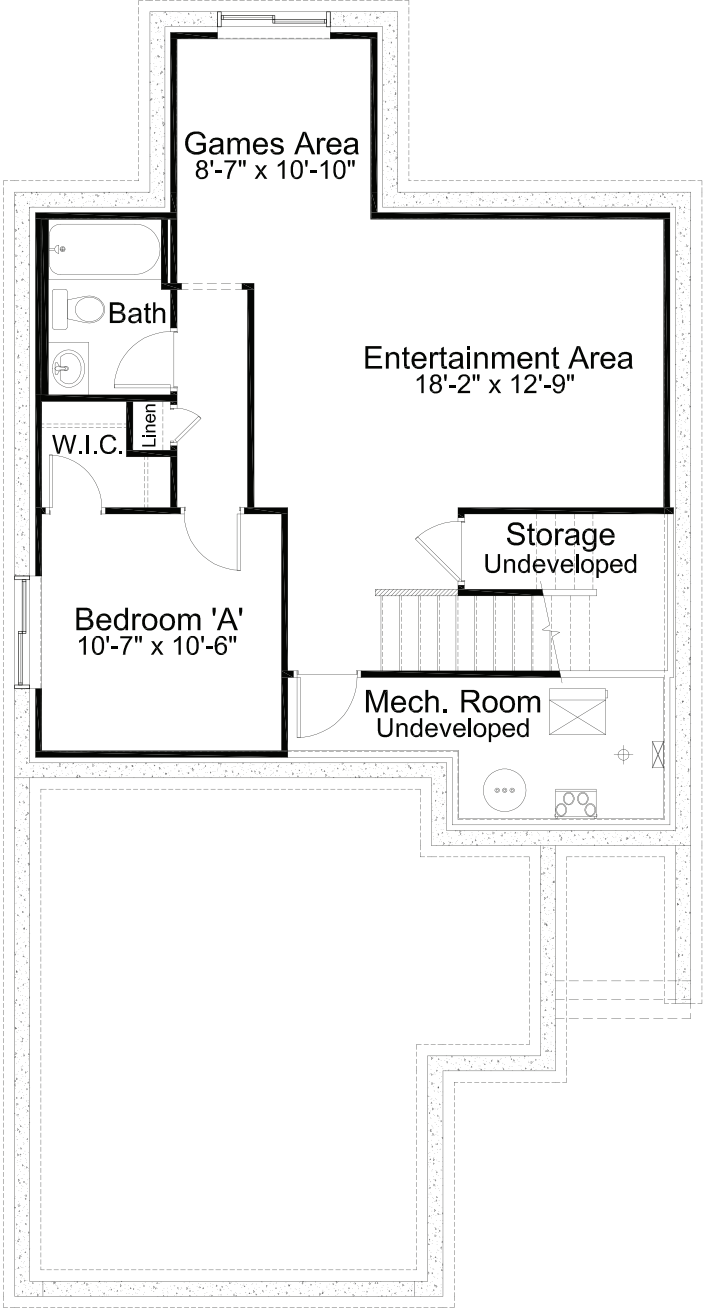
UPPER FLOOR 1,113 sq. ft.



pre-planned options



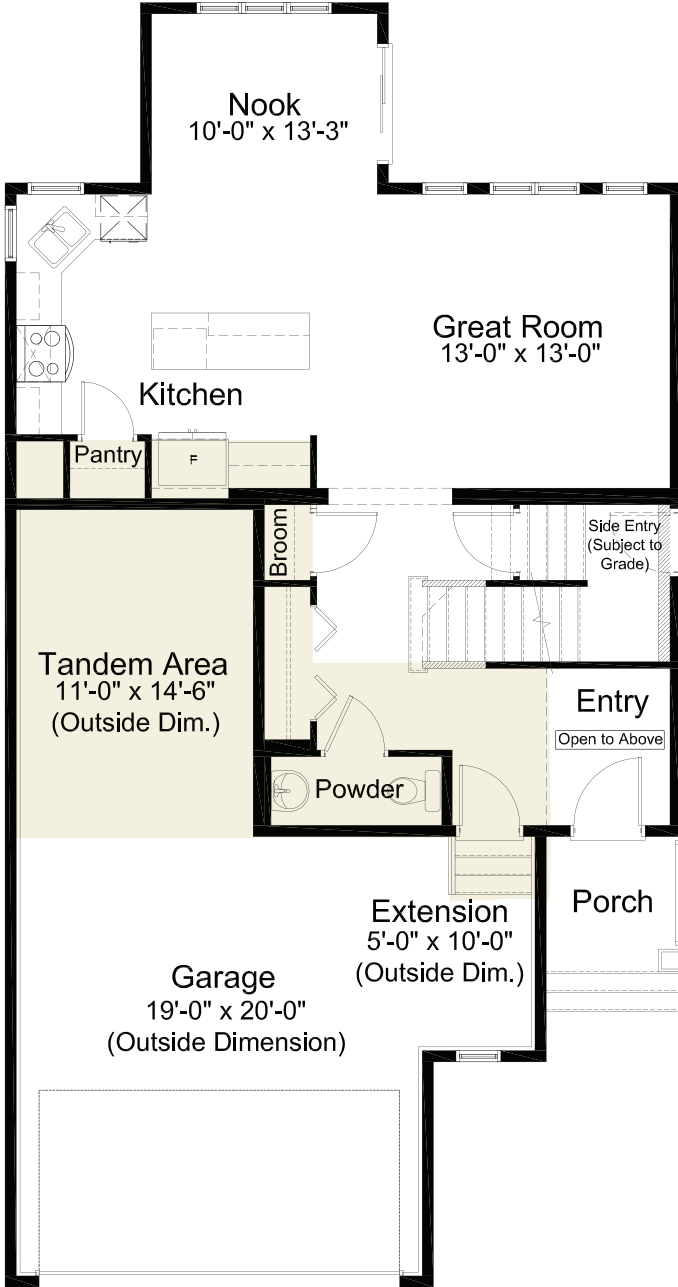
4th Bedroom Option
main floor: 902 sq. ft.



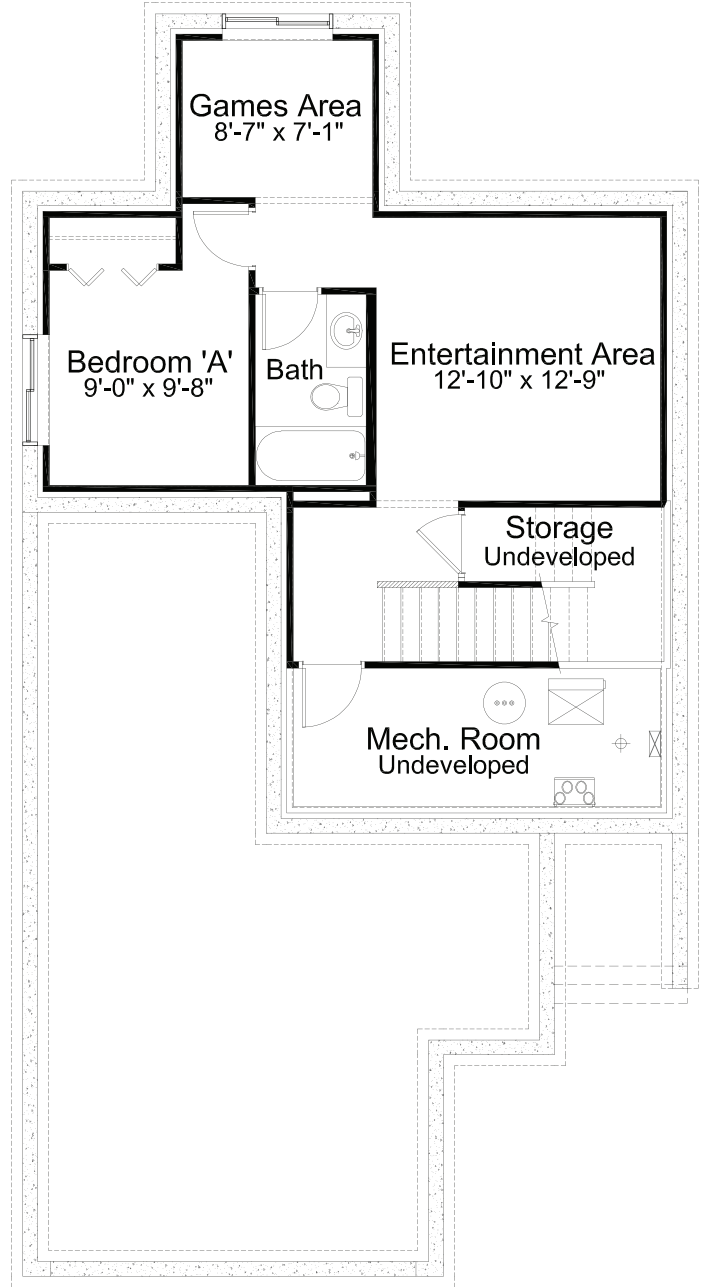
Basement Development Option
638 sq. ft.



pre-planned options



Tandem Garage Option
main floor: 798 sq. ft.



Basement Development Option
for Tandem Garage Option
510 sq. ft.