

alliston

AT HOME



CASCARA bungalow

features

- Open Concept Living
- Spacious Kitchen Layout
- Walk-in Kitchen Pantry
- Stainless Steel Appliance Package
- Quartz Countertops Throughout
- Mudroom
- Spacious Ensuite
- Triple Pane Windows
- Dropped Ceiling Detail
- Attached Double Car Garage

1,278 sq. ft.

2 Bed

2 Bath

Iron Landing
CROSSFIELD, AR

587-893-3870

ironlanding@allistongroup.ca



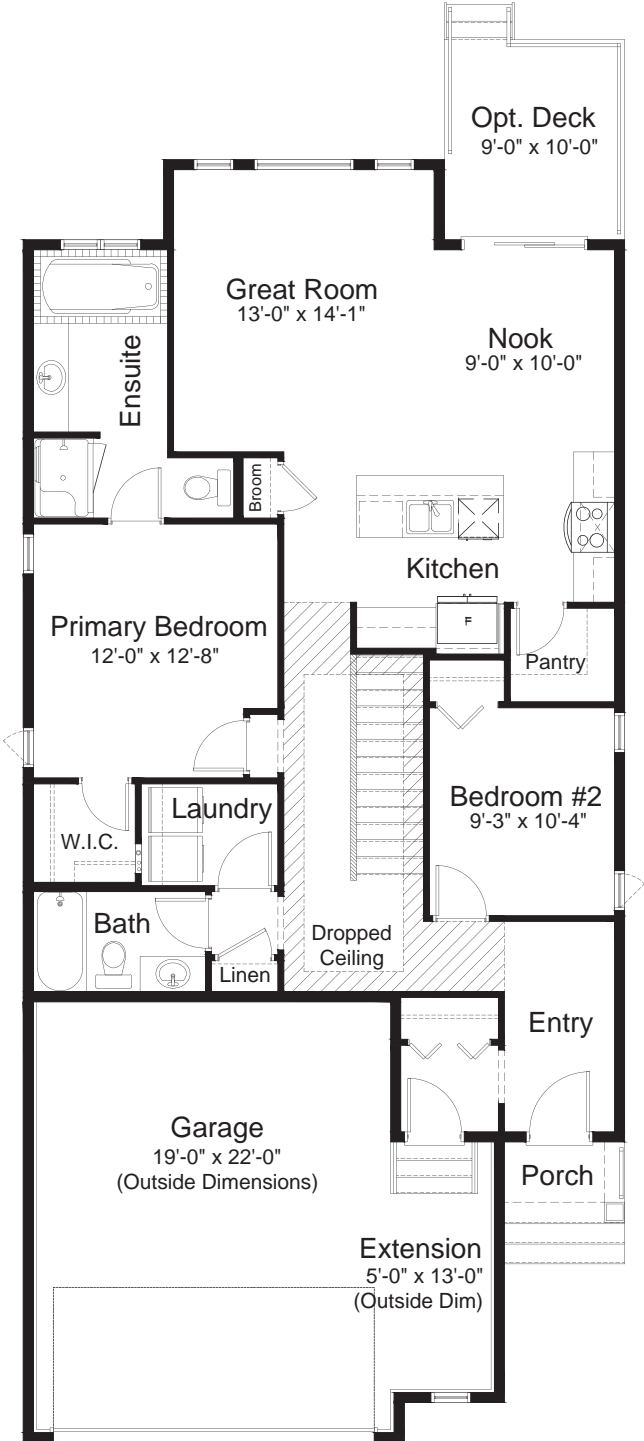
CASCARA BUNGALOW

2 Bed

2 Bath

1,278 sq. ft.

standard plan



FARMHOUSE ELEVATION

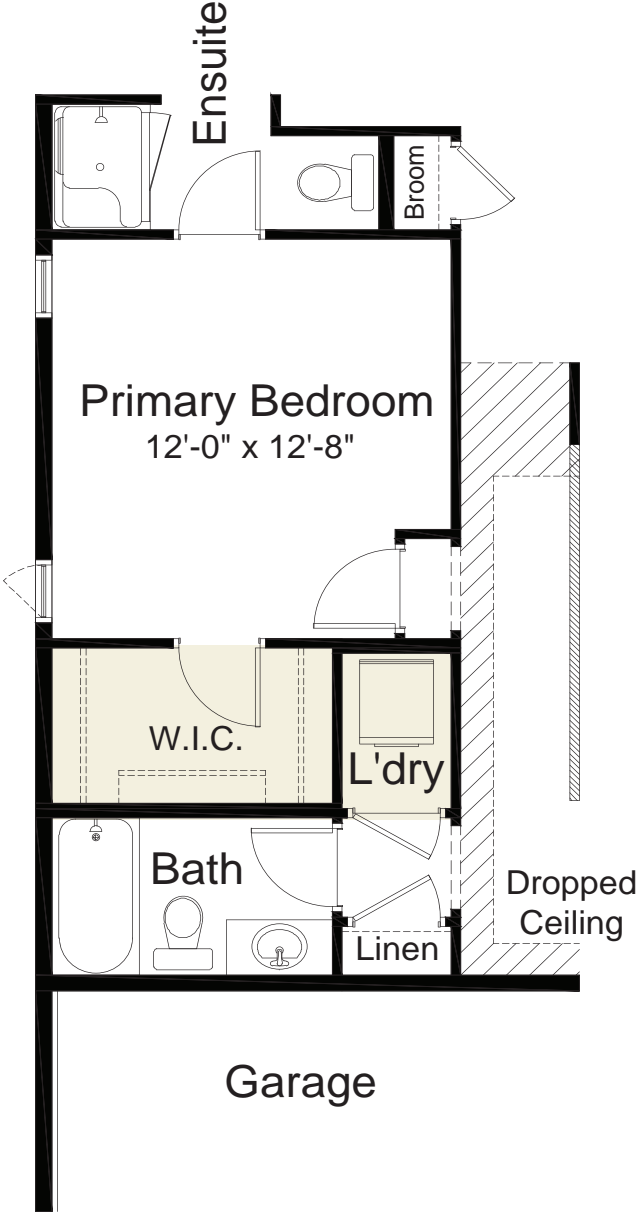


CRAFTSMAN ELEVATION

MAIN FLOOR 1,278 sq. ft.



pre-planned options

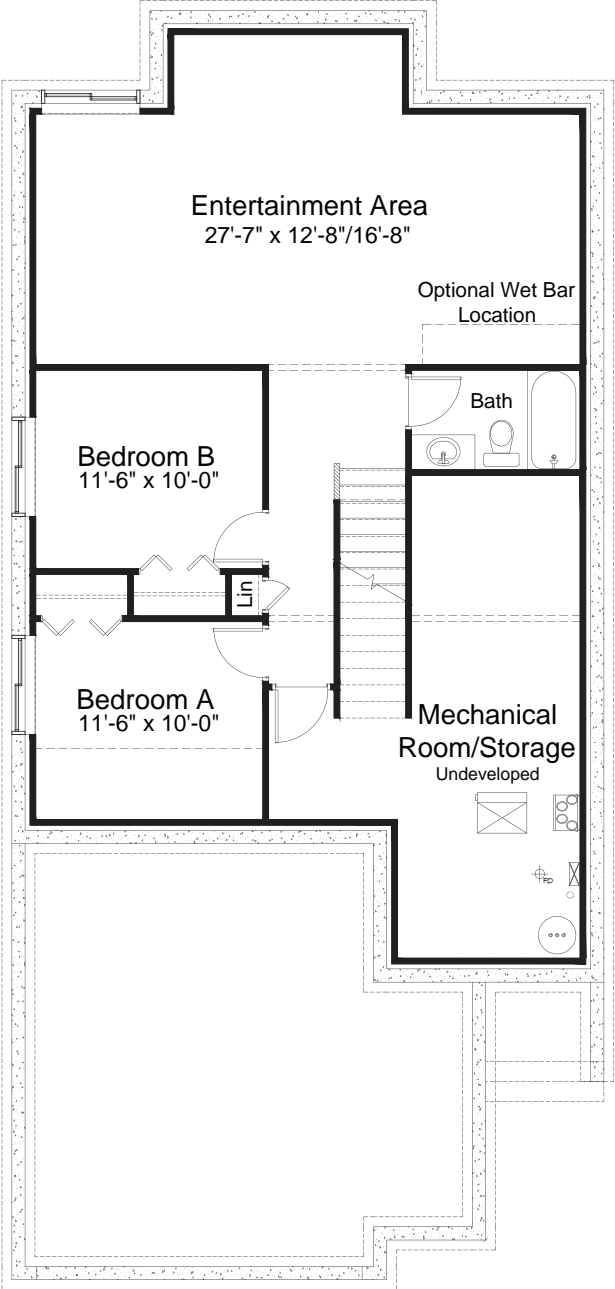


Expanded WIC and Stackable Laundry Option

→
more options



pre-planned options



Basement Development Option
848 sq. ft.

Edited: February 25, 2025
The builder reserves the right to modify or change plans, specifications, features and prices without notice. Materials may be substituted with equivalent or better at the builder's sole discretion. All dimensions and sizes are approximate and are based on architectural measurements. As reverse, mirrored and/or flipped plans occur throughout the building, please see architectural plans if material to your decision to purchase. Renderings, furnishings and equipment shown are an artist's conception and are intended as a general reference only. Please see disclosure statement for specific offering details. E. & O.E.