

# alliston

AT HOME



standard elevation shown

## WILLOW

### features

- Open Concept Living
- Spacious Kitchen Layout
- Walk-thru Kitchen Pantry
- Stainless Steel Appliance Package
- Quartz Countertops Throughout
- Pocket Office
- Triple Pane Windows
- Upper Floor Laundry
- Spacious Ensuite & W.I.C.
- Attached Double Car Garage

1,725 sq. ft.

3 Bed

2.5 Bath

*Iron Landing*  
CROSSFIELD, AB

587-893-3870

ironlanding@allistongroup.ca



WILLOW

3 Bed

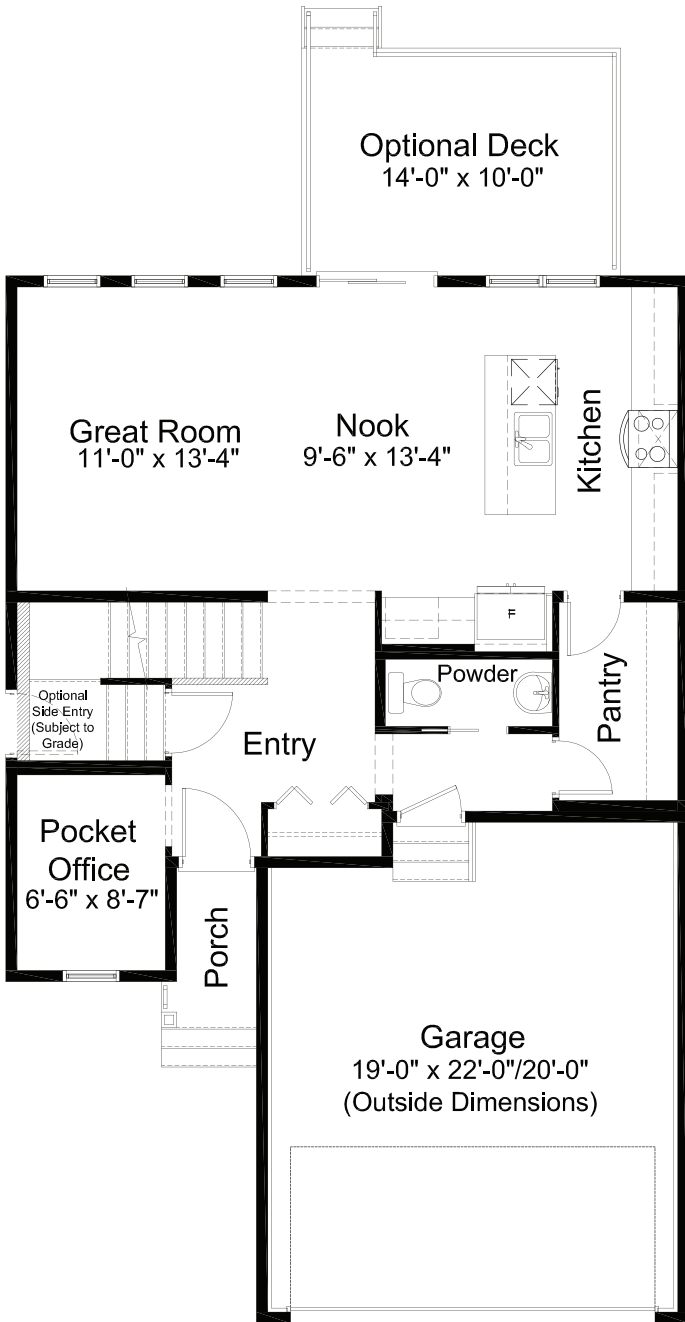
2.5 Bath

1,725 sq. ft.

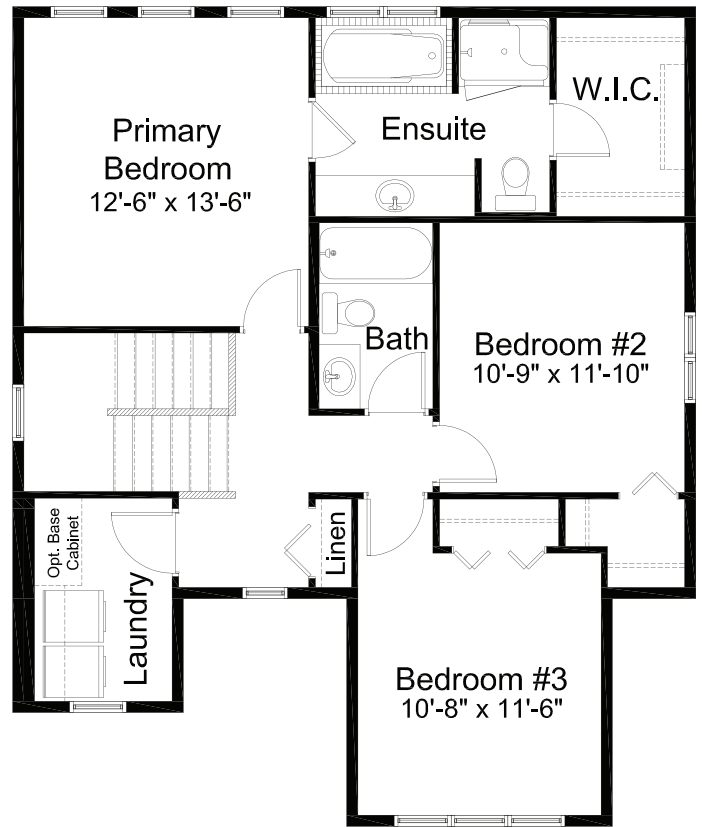
# standard plan



FARMHOUSE ELEVATION



MAIN FLOOR 791 sq. ft.



UPPER FLOOR 934 sq. ft.  
(Compatible w/ Mudroom Option)



WILLOW

3 Bed

2.5 Bath

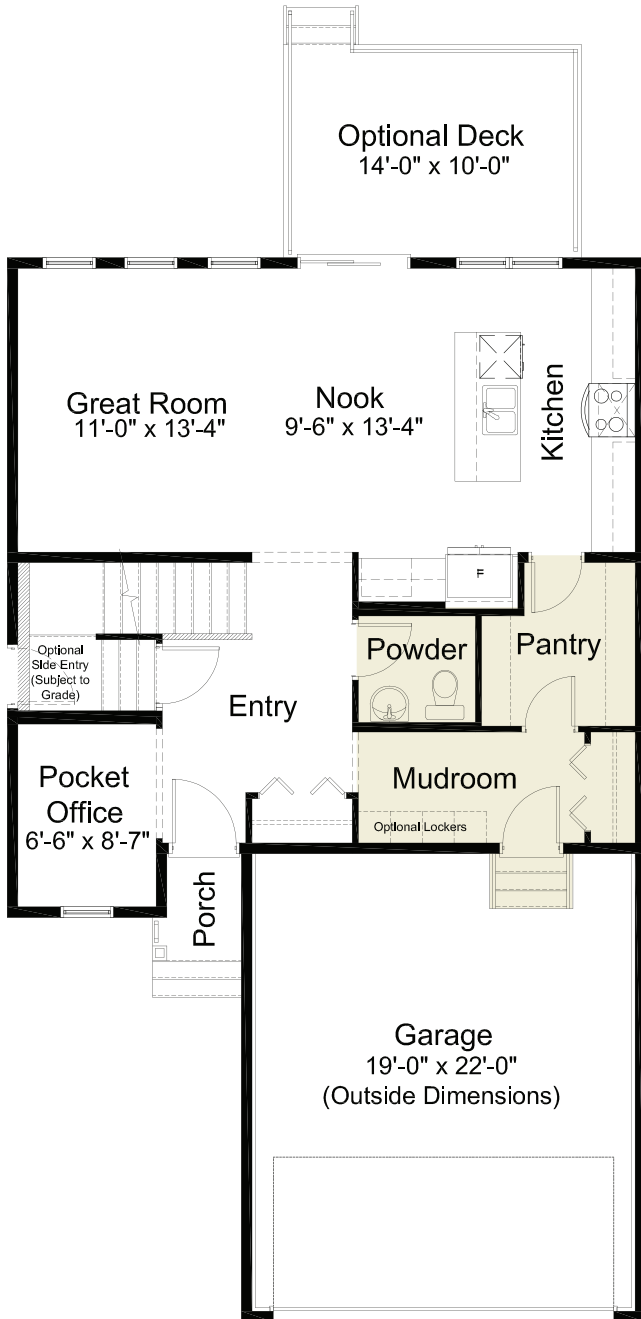
1,725 sq. ft.

# pre-planned options

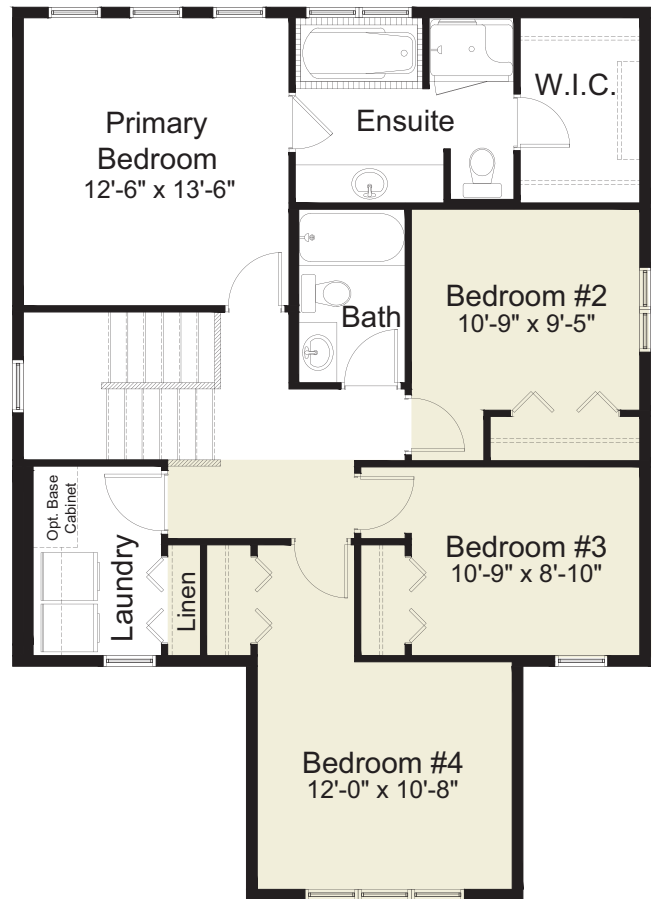


CRAFTSMAN ELEVATION

Optional Deck  
14'-0" x 10'-0"



**Mudroom Option**  
Main Floor: 862 sq. ft.



**4<sup>th</sup> Bedroom Option**  
Upper floor: 1,073 sq. ft.

(Compatible w/ Base Plan & Mudroom Option)

more options →



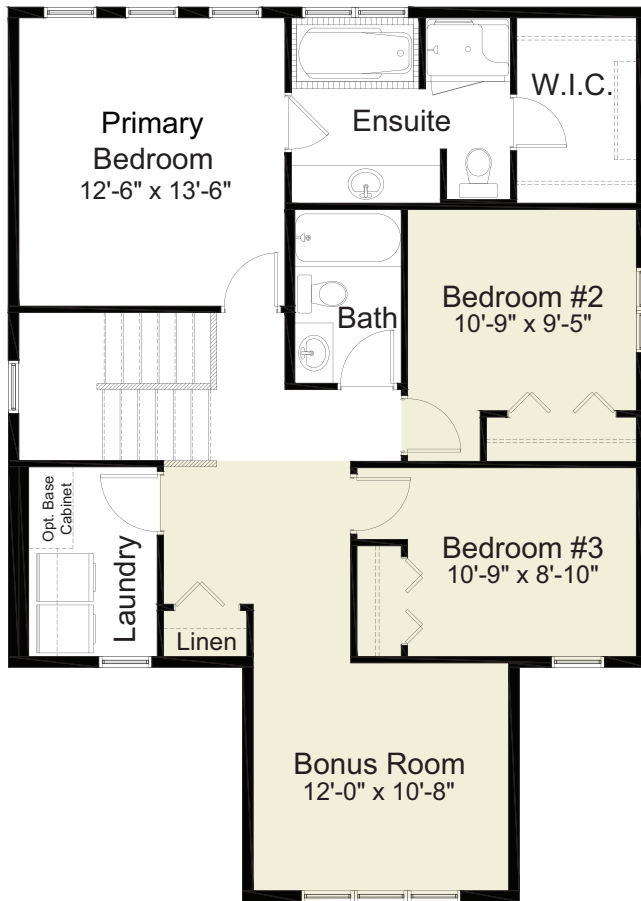
WILLOW

3 Bed

2.5 Bath

1,725 sq. ft.

# pre-planned options



FARMHOUSE BONUS ROOM ELEVATION

**Bonus Room Option**  
 Upper Floor: 1,073 sq. ft.

(Compatible w/ Base Plan & Mudroom Option)