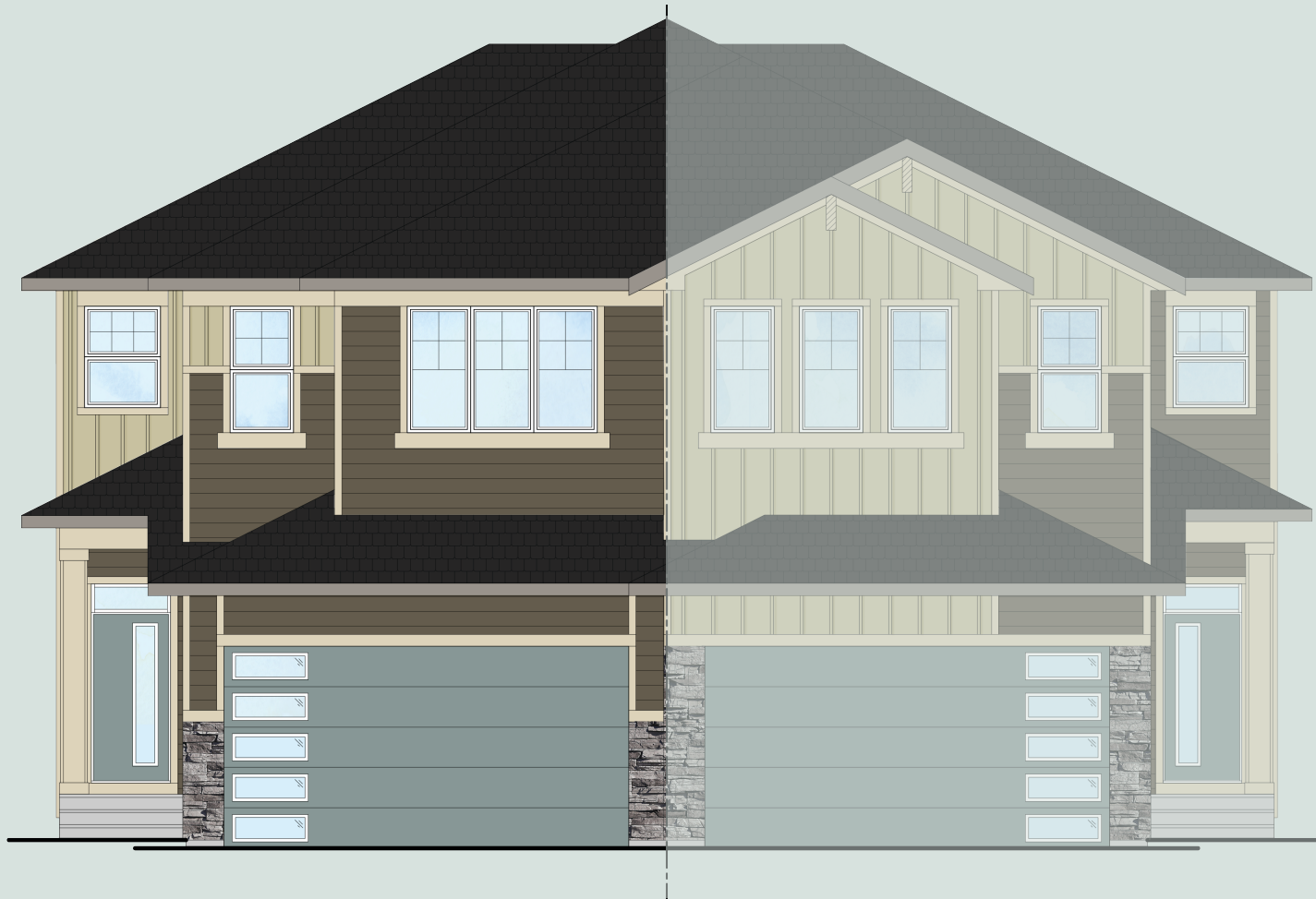


# QUICK POSSESSION



## BROADWAY

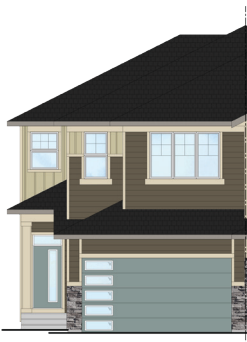
3 Bed | 2.5 Bath | 1,839 sq. ft.

262 South Shore Court  
Chestermere, Alberta  
Block 5 | Lot 41

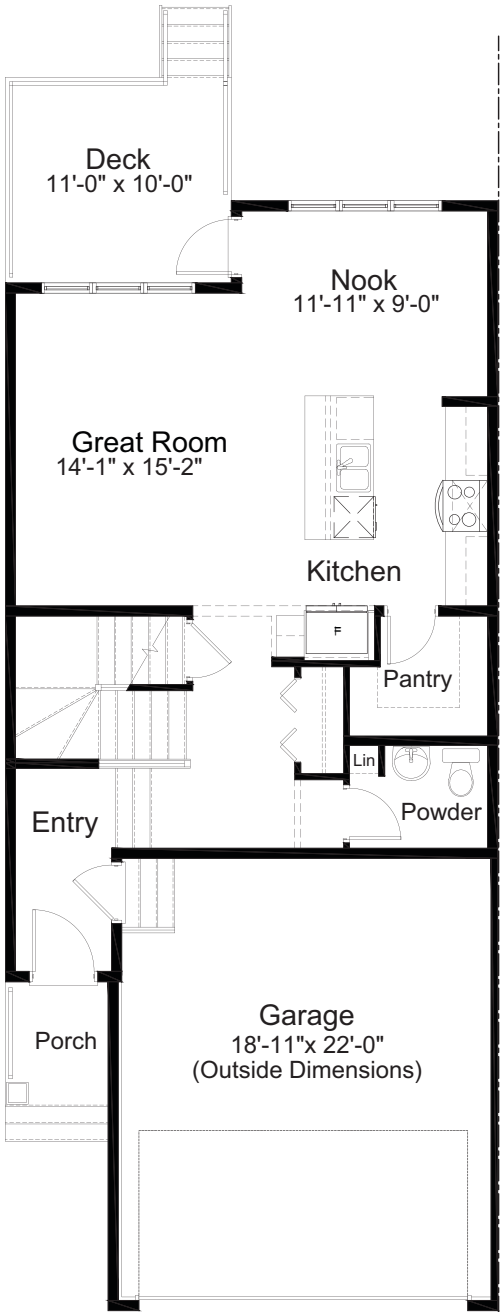
403-235-0012  
southshore@allistongroup.ca  
allistongroup.ca

- Open Concept Living Area
- Luxury Vinyl Plank Flooring
- Luxury Vinyl Tile
- Stainless Steel Appliance Package
- Whirlpool Washer & Dryer Set
- Quartz Countertops Throughout
- Walk-in Kitchen Pantry
- 5-piece Ensuite & W.I.C.
- Upper Floor Laundry
- Rear Deck
- Upper Floor Loft
- Upgraded Hemlock Railing
- Attached Double Car Garage
- Triple Pane Windows

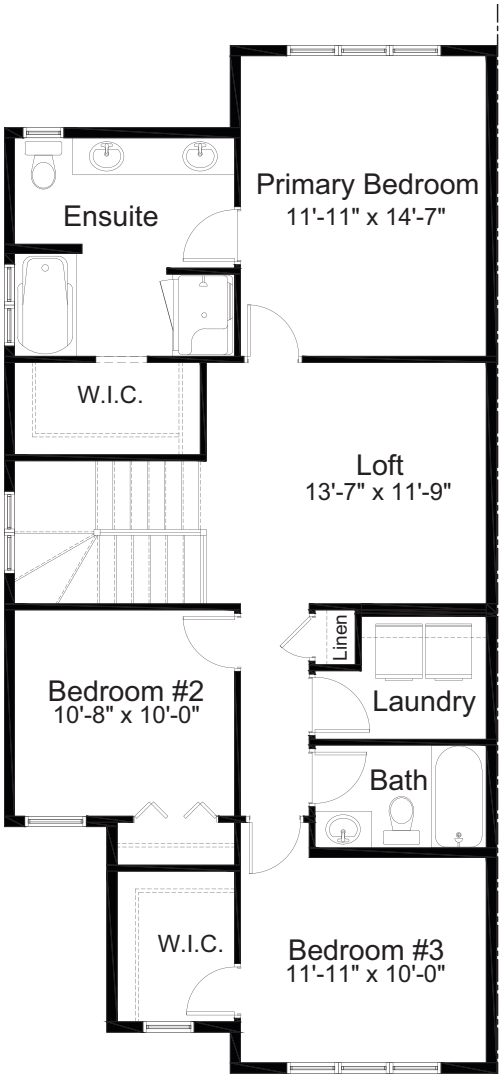
Edited: November 8, 2024  
The builder reserves the right to modify or change plans, specifications, features and prices without notice. Materials may be substituted with equivalent or better at the builder's sole discretion. All dimensions and sizes are approximate and are based on architectural measurements. As reverse, mirrored and/or flipped plans occur throughout the building, please see architectural plans if material to your decision to purchase. Renderings, furnishings and equipment shown are an artist's conception and are intended as a general reference only. Please see disclosure statement for specific offering details. E. & O.E.



ELEVATION



MAIN FLOOR 757 sq. ft.



UPPER FLOOR 1,082 sq. ft.

## BROADWAY

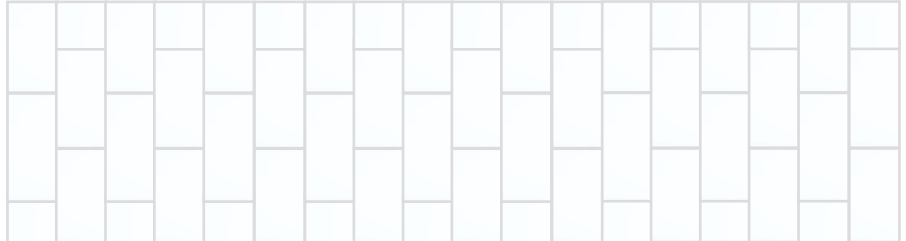
3 Bed | 2.5 Bath | 1,839 sq. ft.

262 South Shore Court  
Chestermere, Alberta  
Block 5 | Lot 41

1.



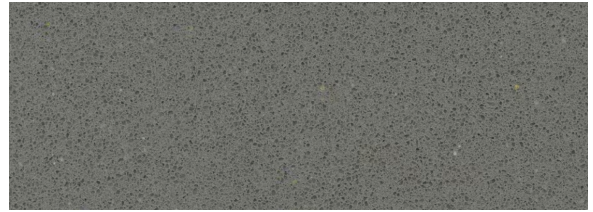
2.



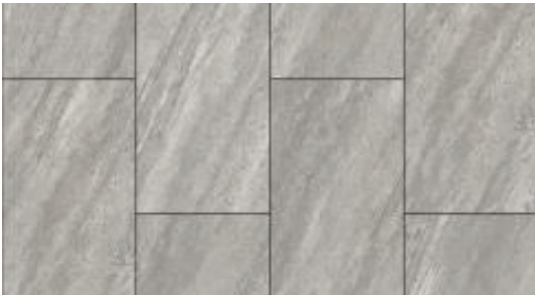
3.



4.



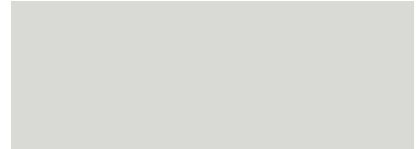
5.



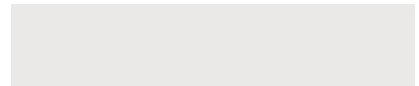
6.



7.



8.



9.



### SELECTION DETAILS

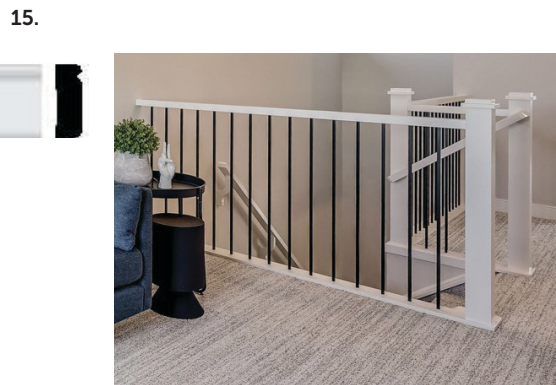
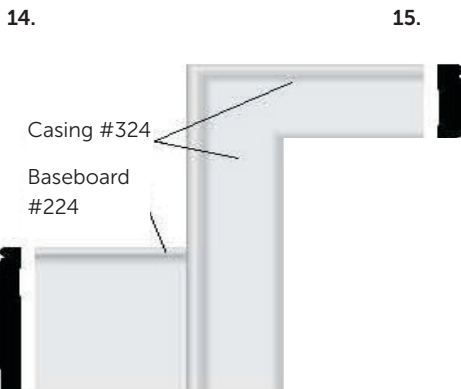
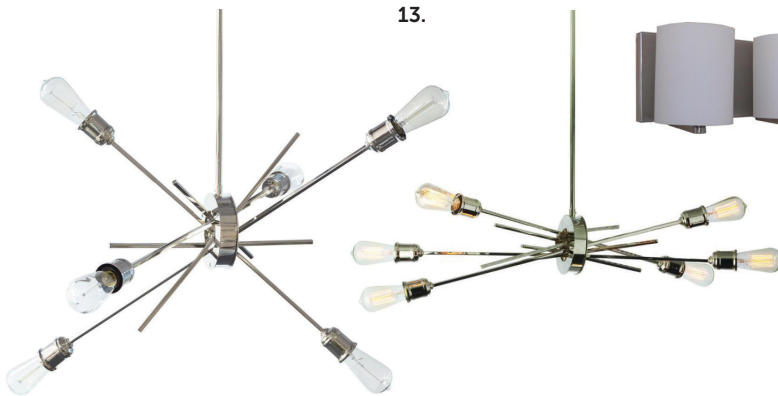
- |                                                                 |                                                           |
|-----------------------------------------------------------------|-----------------------------------------------------------|
| 1. Kitchen & Bath Cabinets - Shaker - Euro White                | 6. Carpet - Mohawk SP025 03                               |
| 2. Wall Tile - Ceratec Tile - Essential Bianco - 3" x 6" Glossy | 7. Cloverdale Artisan Paint - Wall: CA028 Mist            |
| 3. Hardware - Richelieu - Metal Pull 7438 - Brushed Nickel      | 8. Cloverdale Artisan Paint - Trim: CA025 Standard White  |
| 4. Countertops - Silestone Quartz - Grey Expo                   | 9. Luxury Vinyl Plank - Taiga Arizona Series - Scottsdale |
| 5. Luxury Vinyl Tile - Taiga Stonewear+ Grey Silt 12" x 24"     |                                                           |

**Note:** Products featured in our catalogue may differ from physical samples. Variations in colour, texture, and appearance can occur due to various factors, including differences in manufacturing batches, natural variations in materials, and the influence of lighting in photography and printing. We make every effort to ensure that our catalogue accurately represents our products, but we cannot guarantee an exact match to physical samples.

## BROADWAY

3 Bed | 2.5 Bath | 1,839 sq. ft.

262 South Shore Court  
Chestermere, Alberta  
Block 5 | Lot 41



### SELECTION DETAILS

- |                                                              |                                                                       |
|--------------------------------------------------------------|-----------------------------------------------------------------------|
| 10. Kitchen Sink - Blanco Essential U2 400008                | 14. Casing - Transitional Baseboard & Casing                          |
| 11. Kitchen Faucet - Delta Osler 976LF 1H - Polished Chrome  | 15. Stair Railing - Hemlock Railing Design - Painted Cloverdale CA025 |
| 12. Bathroom Plumbing - Delta Wynne Collection - Chrome      | 16. Interior Door Hardware - Weiser Troy Satin Chrome Collection      |
| 13. Lighting - Standard Lighting Package - Silver Collection | 17. Interior Door - Kingston Panel Raised Door                        |

**Note:** Products featured in our catalogue may differ from physical samples. Variations in colour, texture, and appearance can occur due to various factors, including differences in manufacturing batches, natural variations in materials, and the influence of lighting in photography and printing. We make every effort to ensure that our catalogue accurately represents our products, but we cannot guarantee an exact match to physical samples.