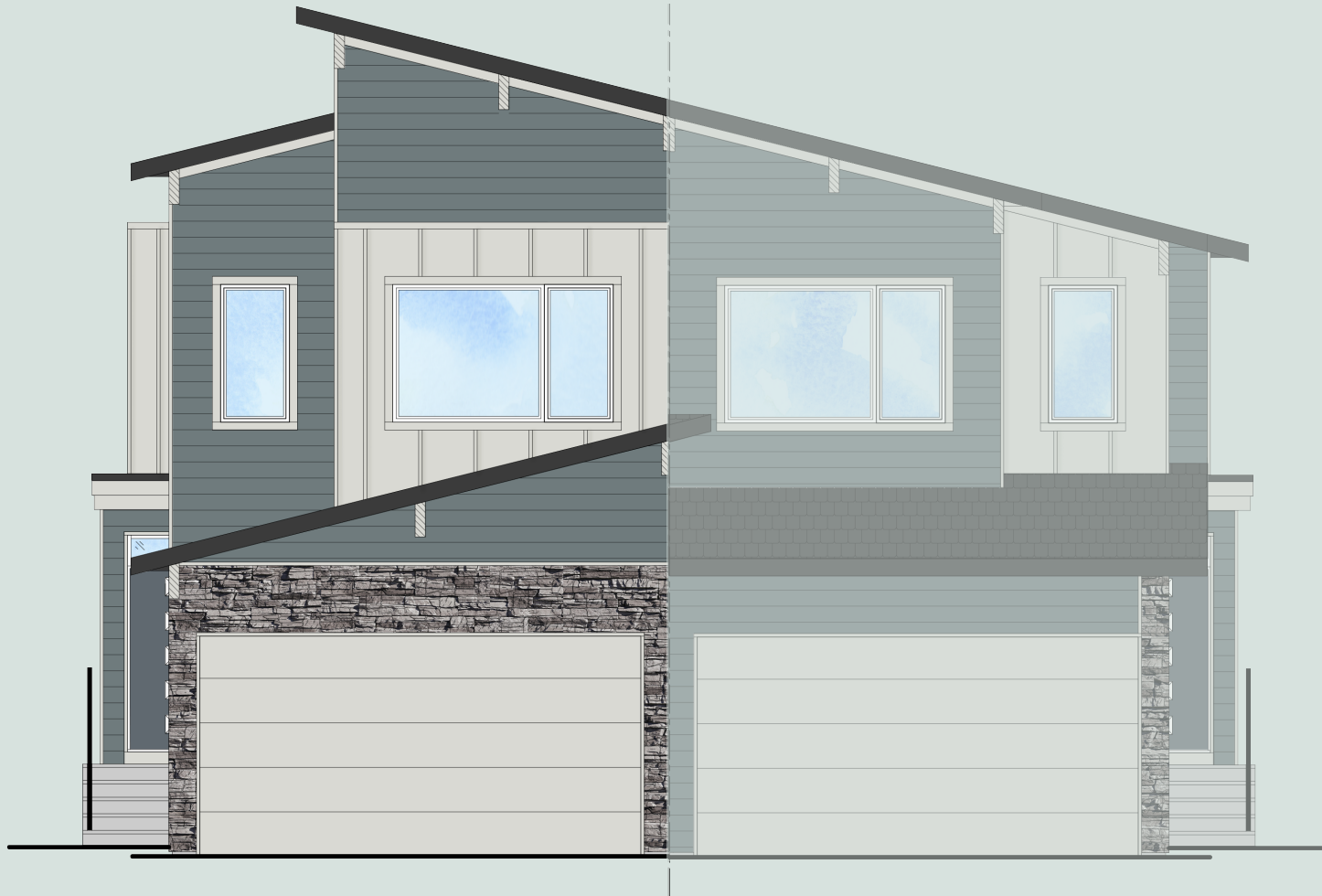


# QUICK POSSESSION



**LAUREL** (modified)

3 Bed | 2.5 Bath | 1,711 sq. ft.

**390 South Shore Drive**  
**Chestermere, Alberta**  
Block 8 | Lot 1

403-235-0012  
southshore@allistongroup.ca  
allistongroup.ca

# LAUREL (modified)

3 Bed

2.5 Bath

1,711 sq. ft.

390 South Shore Drive

Block 8 | Lot 1

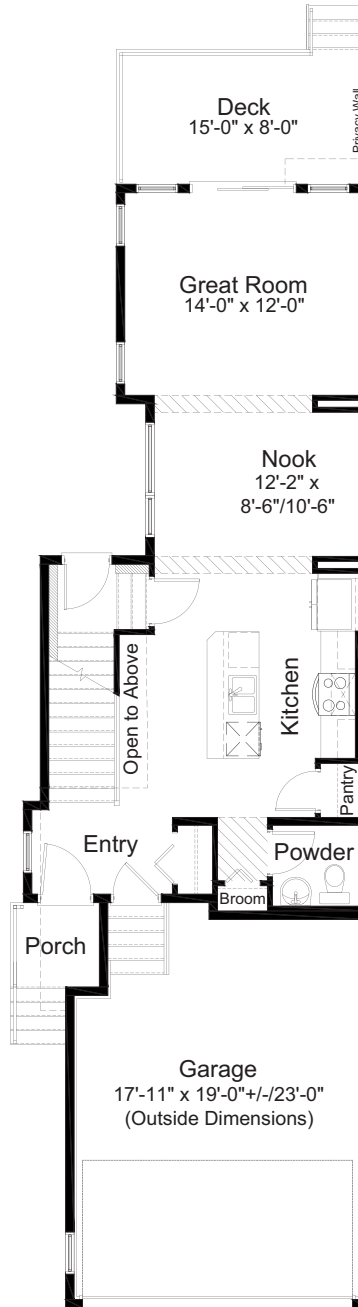
- Open Concept Living Area
- Luxury Vinyl Plank Flooring
- Luxury Vinyl Tile
- Stainless Steel Appliance Package
- Whirlpool Washer & Dryer Set
- Upgraded Full Height Kitchen Cabinets
- Quartz Countertops Throughout
- 4-piece Ensuite & W.I.C.
- Upper Floor Laundry
- Lotus Railing Upgrade
- Rear Deck
- Upper Floor Loft
- Attached Double Car Garage
- Side Entry
- Triple Pane Windows

Edited: November 4, 2024

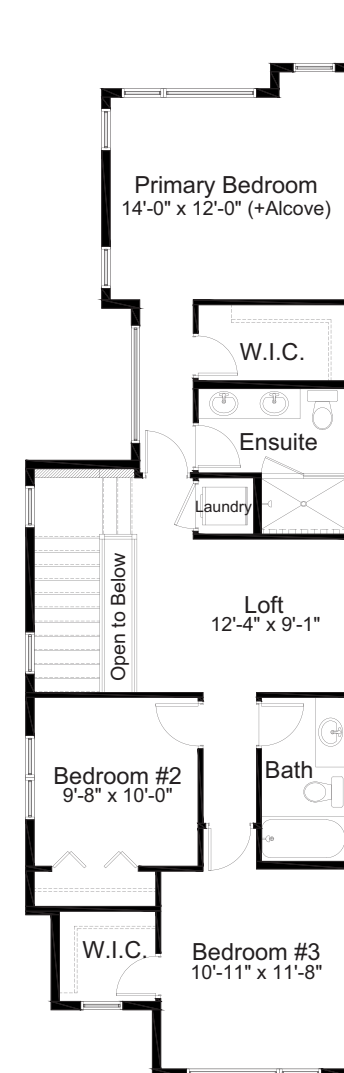
The builder reserves the right to modify or change plans, specifications, features and prices without notice. Materials may be substituted with equivalent or better at the builder's sole discretion. All dimensions and sizes are approximate and are based on architectural measurements. As reverse, mirrored and/or flipped plans occur throughout the building, please see architectural plans if material to your decision to purchase. Renderings, furnishings and equipment shown are an artist's conception and are intended as a general reference only. Please see disclosure statement for specific offering details. E. & O.E.



ELEVATION



MAIN FLOOR 730 sq. ft.



UPPER FLOOR 981 sq. ft.