

# alliston

AT HOME



## BAYBERRY

### features

- Open Concept Living
- Spacious Kitchen Layout
- Walk-in Kitchen Pantry
- Stainless Steel Appliance Package
- Quartz Countertops Throughout
- Open to Above Main Floor
- Upper Floor Loft
- Spacious Ensuite & W.I.C.
- Upper Floor Laundry
- Attached Double Car Garage
- Triple Pane Windows

2,228 sq. ft.

3 Bed

2.5 Bath

*Iron Landing*  
CROSSFIELD, AB

587-893-3870

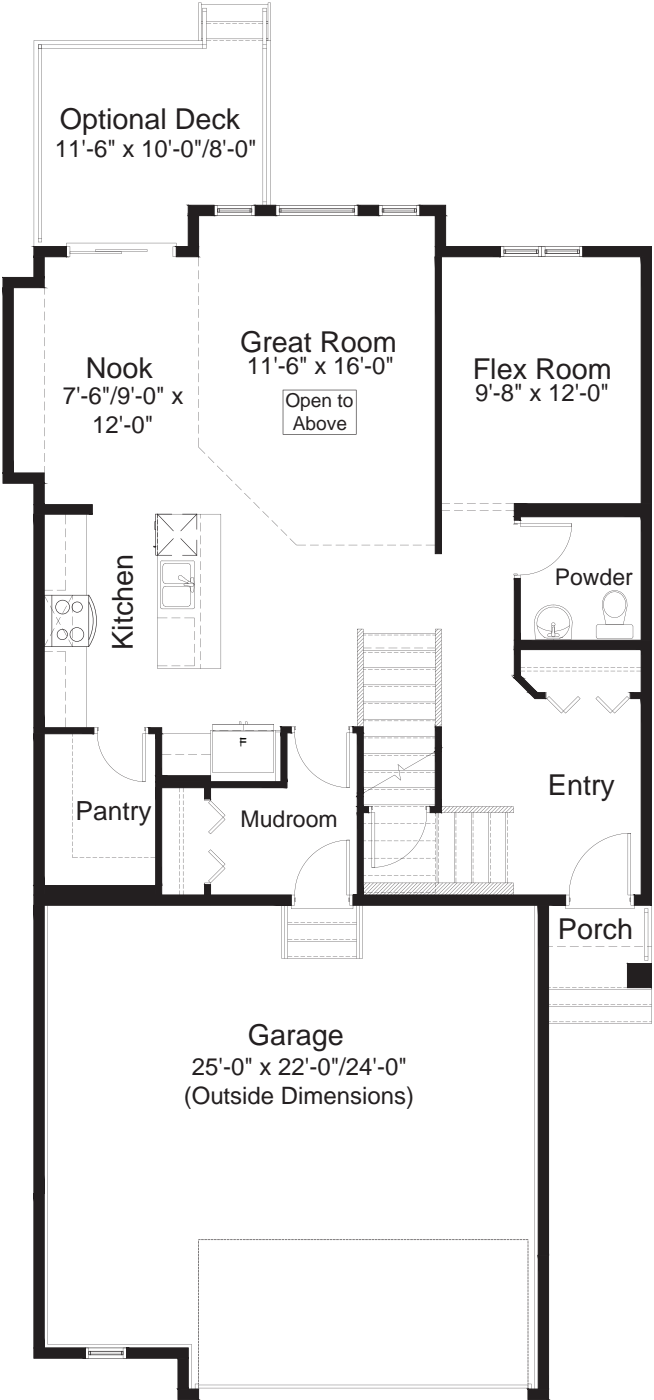
ironlanding@allistongroup.ca



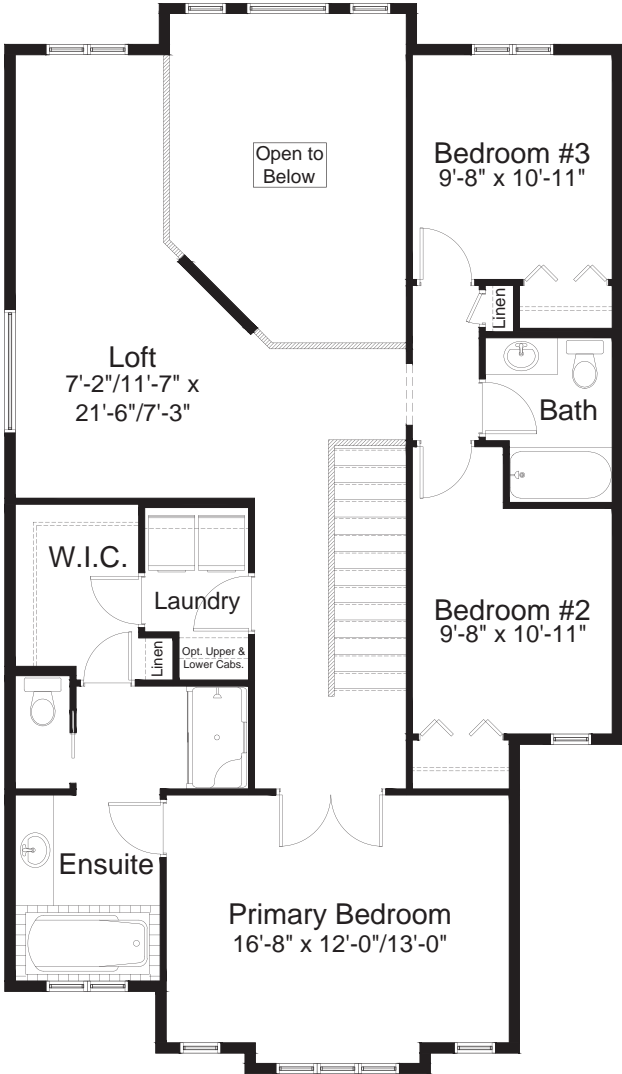
standard plan



CRAFTSMAN ELEVATION



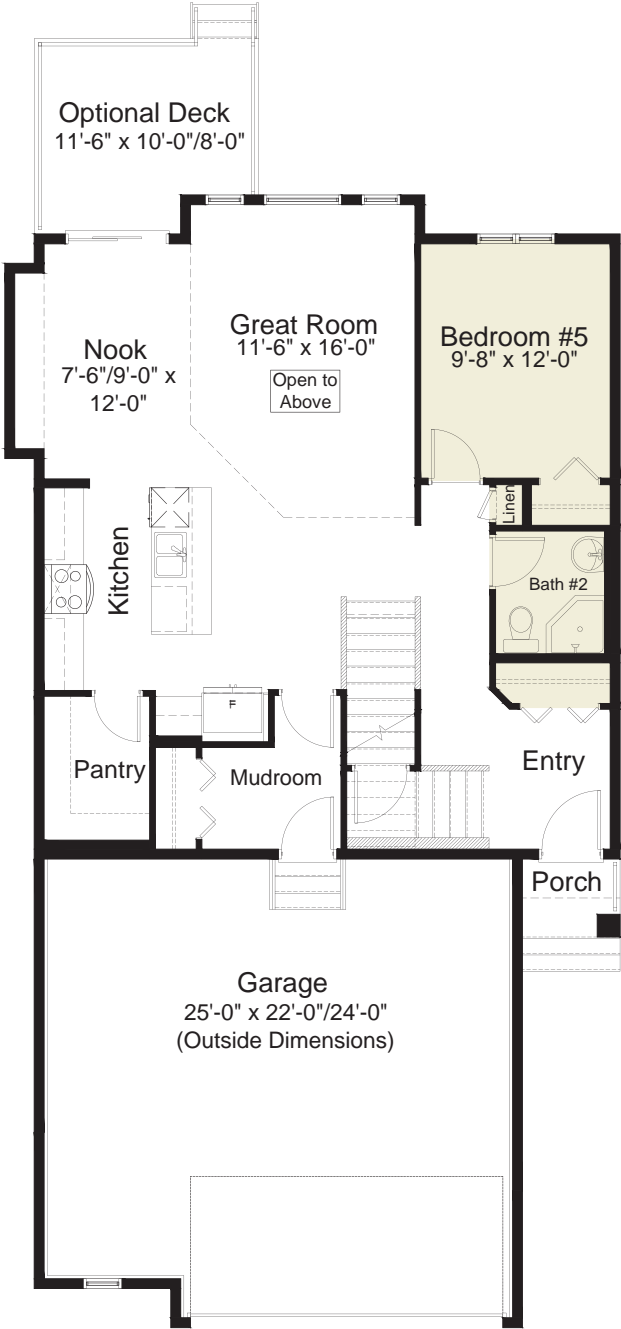
MAIN FLOOR 1,000 sq. ft.



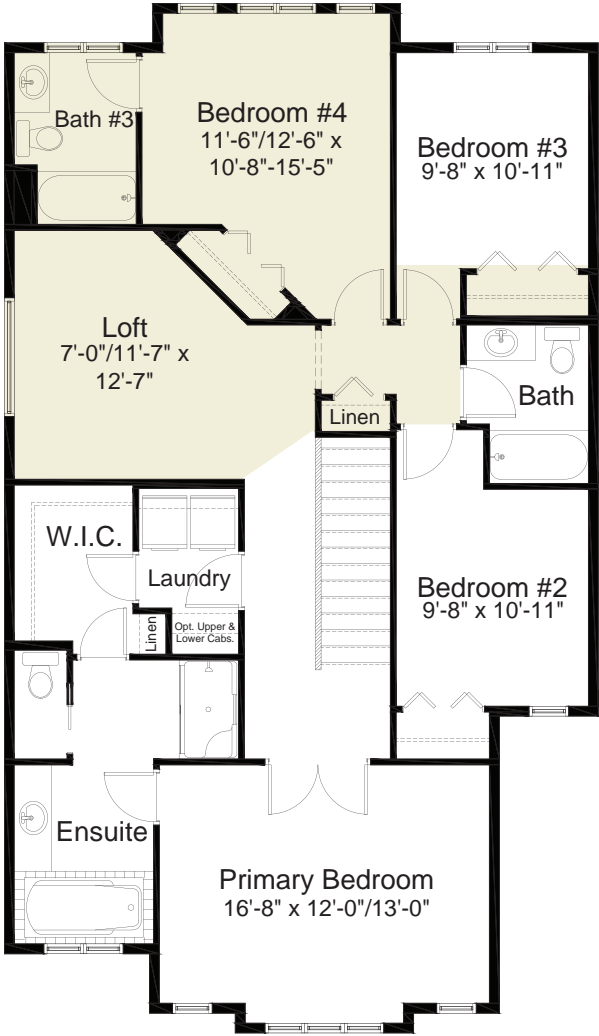
UPPER FLOOR 1,228 sq. ft.



pre-planned options



Main Floor Bedroom Option  
1,000 sq. ft.



Fourth Bedroom Option  
Upper Floor: 1,407 sq. ft.



BAYBERRY

3 Bed

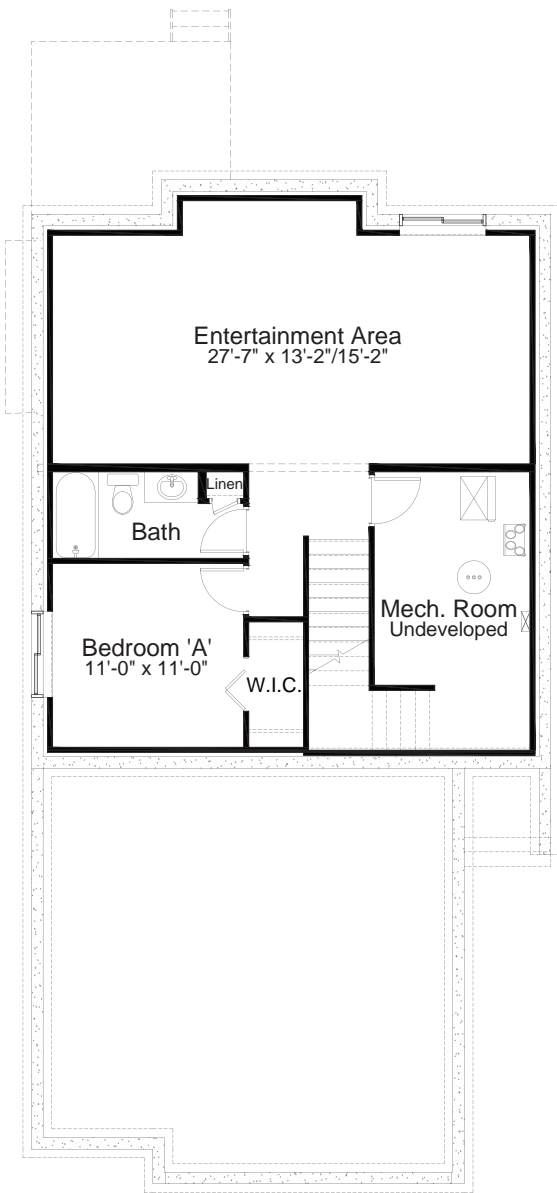
2.5 Bath

2,228 sq. ft.

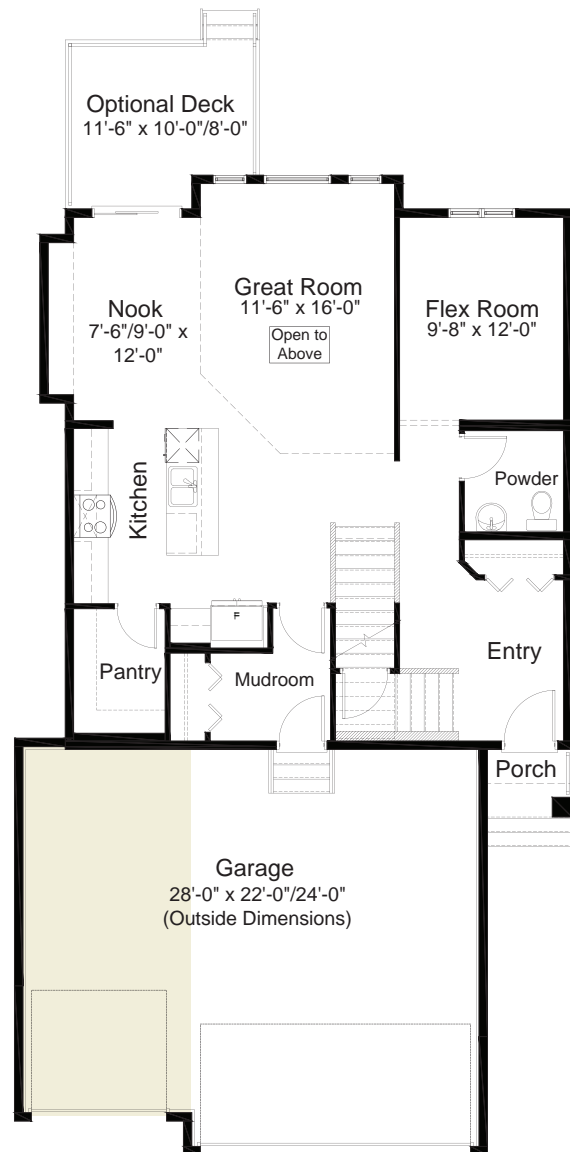
# pre-planned options



TRIPLE CAR GARAGE ELEVATION



Basement Development Option  
696 sq. ft.



Triple Car Garage Option  
Main Floor: 1,000 sq. ft.

Edited: February 19, 2025

The builder reserves the right to modify or change plans, specifications, features and prices without notice. Materials may be substituted with equivalent or better at the builder's sole discretion. All dimensions and sizes are approximate and are based on architectural measurements. As reverse, mirrored and/or flipped plans occur throughout the building, please see architectural plans if material to your decision to purchase. Renderings, furnishings and equipment shown are an artist's conception and are intended as a general reference only. Please see disclosure statement for specific offering details. E. & O.E.