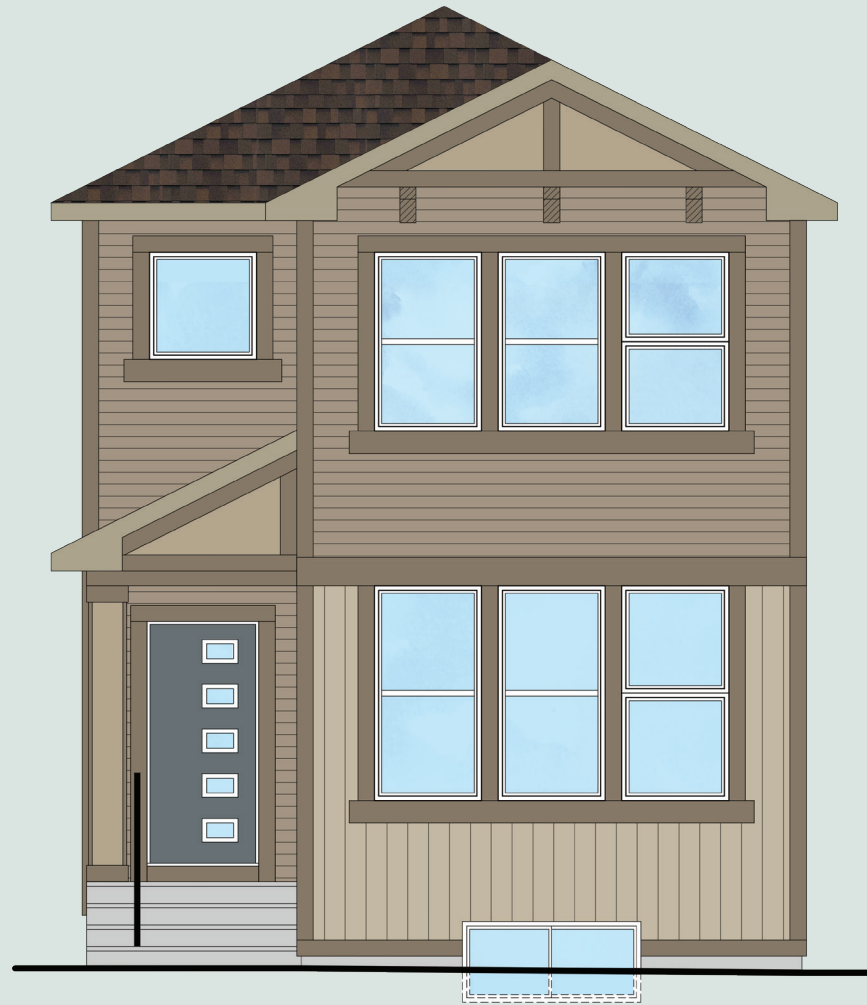


alliston
AT HOME

QUICK POSSESSION



CLAREMONT

4 Bed | 3 Bath | 1,768 sq. ft.

39 Belvedere Cres SE
Calgary, Alberta
Block 11 | Lot 58

587-620-3645
belvedere@allistongroup.ca

268 belvedere drive se
calgary, alberta



CLAREMONT

4 Bed

3 Bath

1,768 sq. ft.

39 Belvedere Cres SE

Block 11 | Lot 58

- Open Concept Living
- Stainless Steel Appliance Package
- Upgraded Gas Range
- Samsung Washer & Dryer Set
- Quartz Countertops Throughout
- Luxury Vinyl Plank Flooring
- Electric Fireplace in Great Room
- Main Floor Full Bath and 4th Bedroom
- Hazel Lighting Package
- Upper Floor Laundry
- Upper Floor Loft
- Side Entry
- Triple Pane Windows
- Hemlock Railing Design

Edited: December 10, 2024

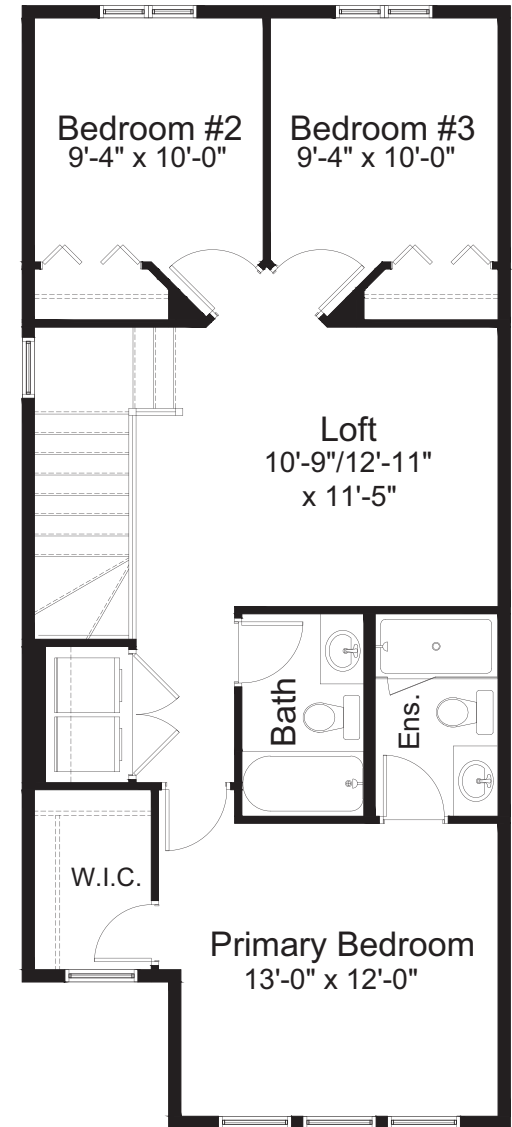
The builder reserves the right to modify or change plans, specifications, features and prices without notice. Materials may be substituted with equivalent or better at the builder's sole discretion. All dimensions and sizes are approximate and are based on architectural measurements. As reverse, mirrored and/or flipped plans occur throughout the building, please see architectural plans if material to your decision to purchase. Renderings, furnishings and equipment shown are an artist's conception and are intended as a general reference only. Please see disclosure statement for specific offering details. E. & O.E.



CRAFTSMAN #2 ELEVATION



MAIN FLOOR
884 sq. ft.



UPPER FLOOR
884 sq. ft.