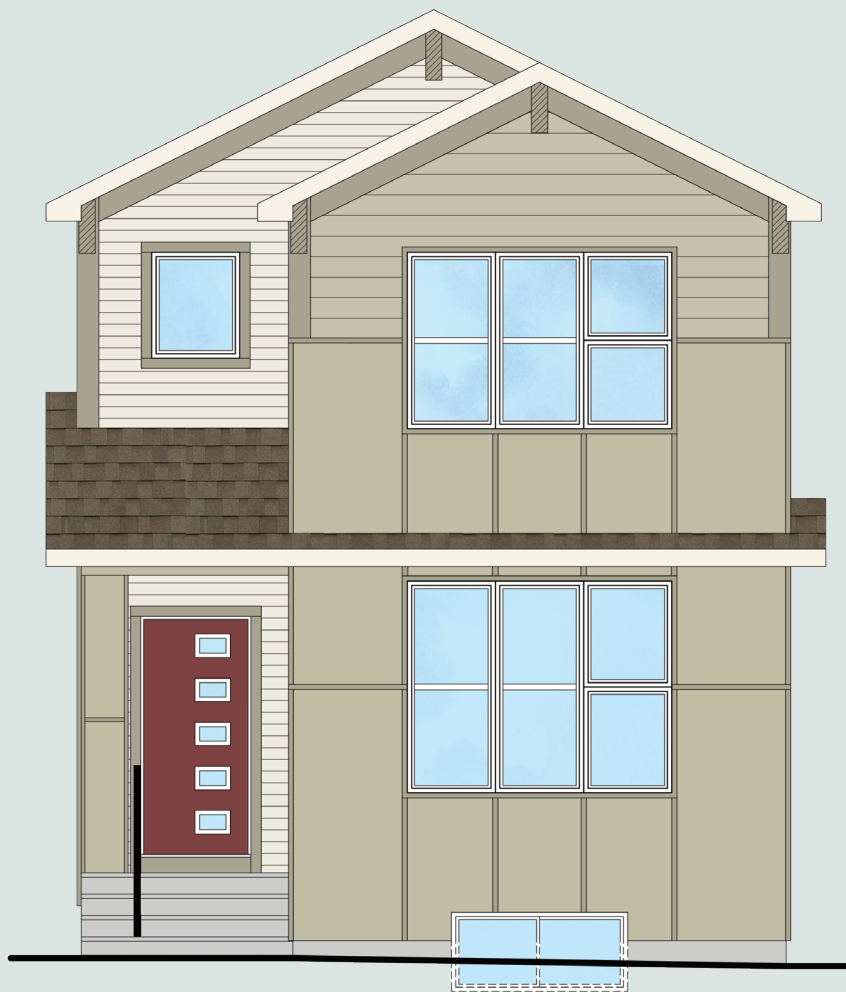


alliston  
AT HOME

# QUICK POSSESSION



## EDISON

3 Bed | 2.5 Bath | 1,528 sq. ft.

311 Belvedere Drive SE  
Calgary, Alberta  
Block 11 | Lot 14

587-620-3645  
belvedere@allistongroup.ca

268 belvedere drive se  
calgary, alberta



# EDISON

3 Bed

2.5 Bath

1,528 sq. ft.

311 Belvedere Drive SE

Block 11 | Lot 14

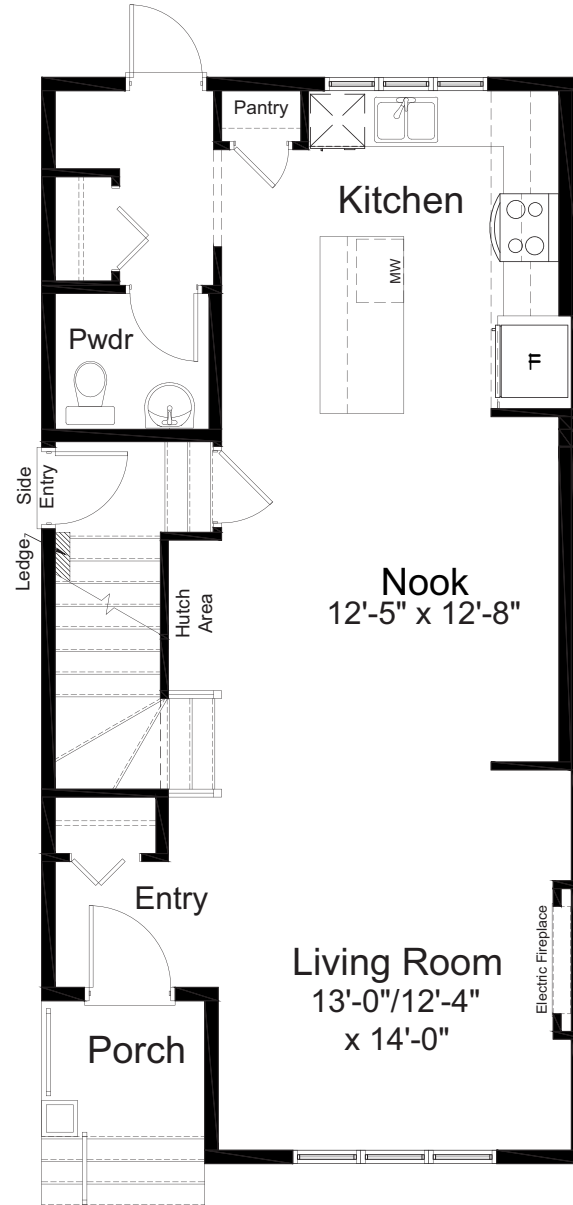
- Open Concept Living
- Stainless Steel Appliance Package
- Upgraded Gas Range
- Samsung Washer & Dryer Set
- Quartz Countertops Throughout
- Luxury Vinyl Plank Flooring
- Electric Fireplace in Living Room
- Upper Floor Laundry
- Side Entry
- Triple Pane Windows
- Hemlock Railing Design

Edited: December 9, 2024

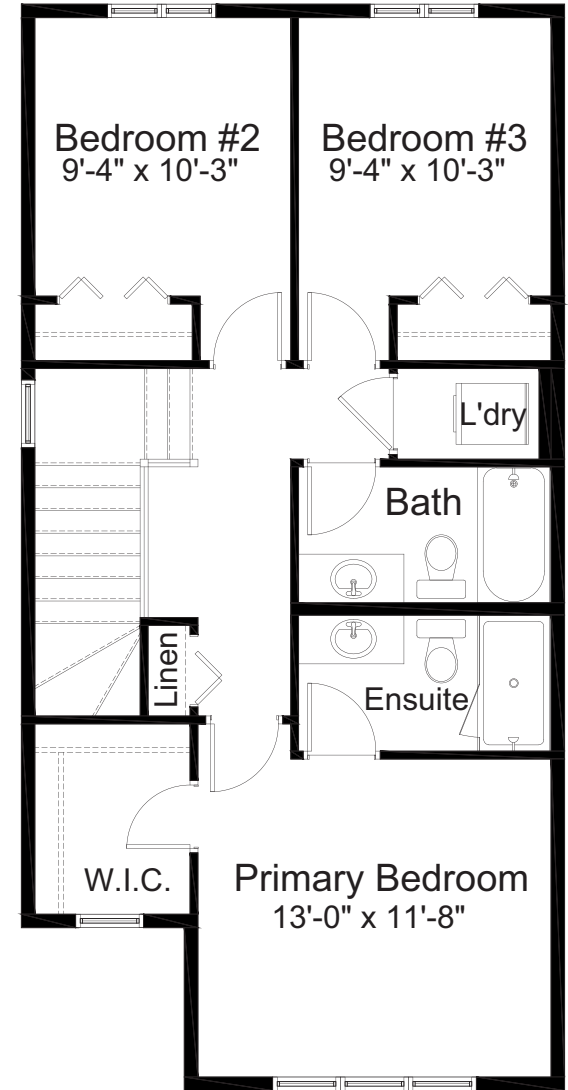
The builder reserves the right to modify or change plans, specifications, features and prices without notice. Materials may be substituted with equivalent or better at the builder's sole discretion. All dimensions and sizes are approximate and are based on architectural measurements. As reverse, mirrored and/or flipped plans occur throughout the building, please see architectural plans if material to your decision to purchase. Renderings, furnishings and equipment shown are an artist's conception and are intended as a general reference only. Please see disclosure statement for specific offering details. E. & O.E.



CRAFTSMAN #1 ELEVATION



MAIN FLOOR  
764 sq. ft.



UPPER FLOOR  
764 sq. ft.