

# QUICK POSSESSION



## YORK

3 Bed | 2.5 Bath | 1,679 sq. ft.

**438 South Shore Drive**  
**Chestermere, Alberta**  
Block 8 | Lot 13

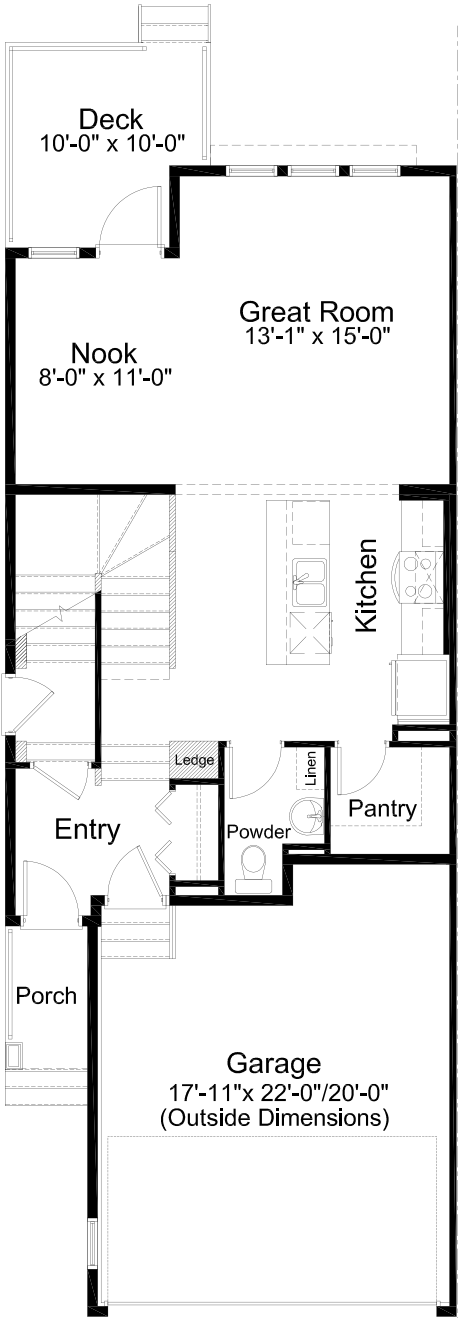
403-235-0012  
[southshore@allistongroup.ca](mailto:southshore@allistongroup.ca)  
[allistongroup.ca](http://allistongroup.ca)

- Open Concept Living Area
- Luxury Vinyl Plank Flooring
- Luxury Vinyl Tile
- Stainless Steel Appliance Package
- Whirlpool Washer & Dryer Set
- Quartz Countertops Throughout
- Walk-in Kitchen Pantry
- 4-piece Ensuite & W.I.C.
- Upper Floor Laundry
- Rear Deck
- Attached Double Car Garage
- Triple Pane Windows

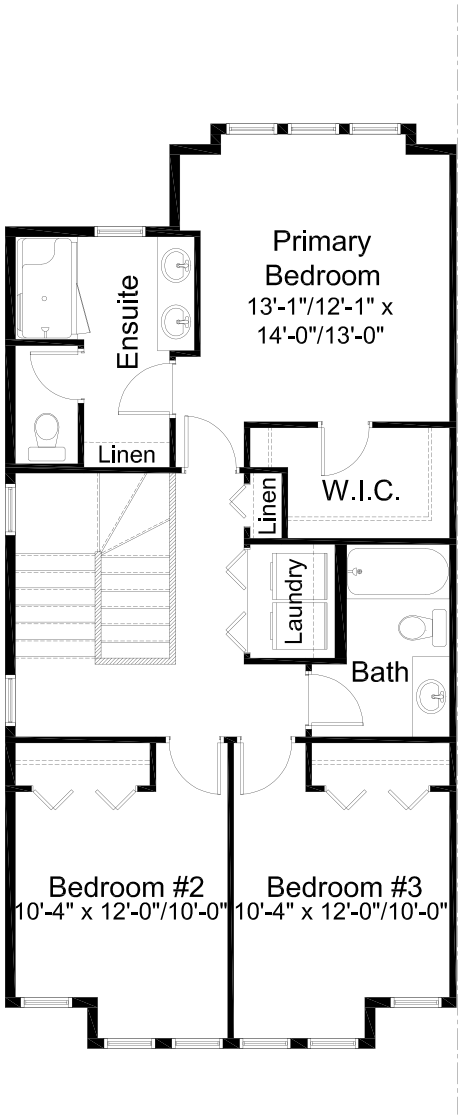
Edited: January 27, 2025  
The builder reserves the right to modify or change plans, specifications, features and prices without notice. Materials may be substituted with equivalent or better at the builder's sole discretion. All dimensions and sizes are approximate and are based on architectural measurements. As reverse, mirrored and/or flipped plans occur throughout the building, please see architectural plans if material to your decision to purchase. Renderings, furnishings and equipment shown are an artist's conception and are intended as a general reference only. Please see disclosure statement for specific offering details. E. & O.E.



ELEVATION



MAIN FLOOR 749 sq. ft.



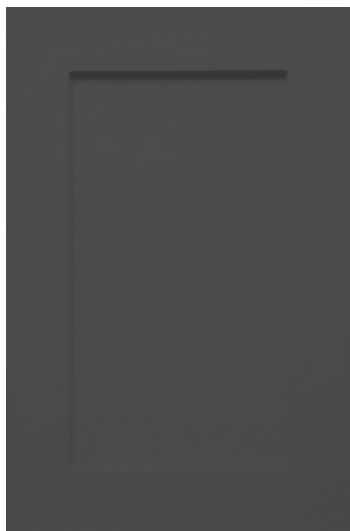
UPPER FLOOR 930 sq. ft.

## YORK

3 Bed | 2.5 Bath | 1,679 sq. ft.

438 South Shore Drive  
Chestermere, Alberta  
Block 8 | Lot 13

1.



2.



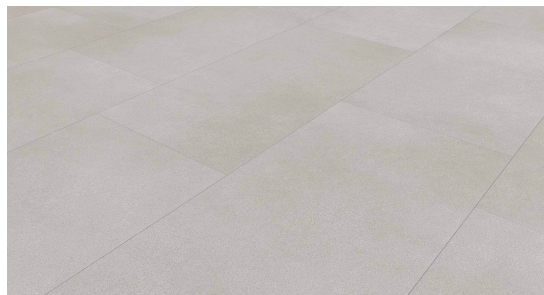
3.



4.



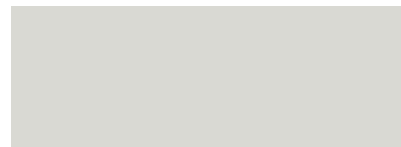
5.



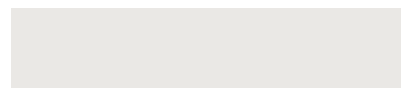
6.



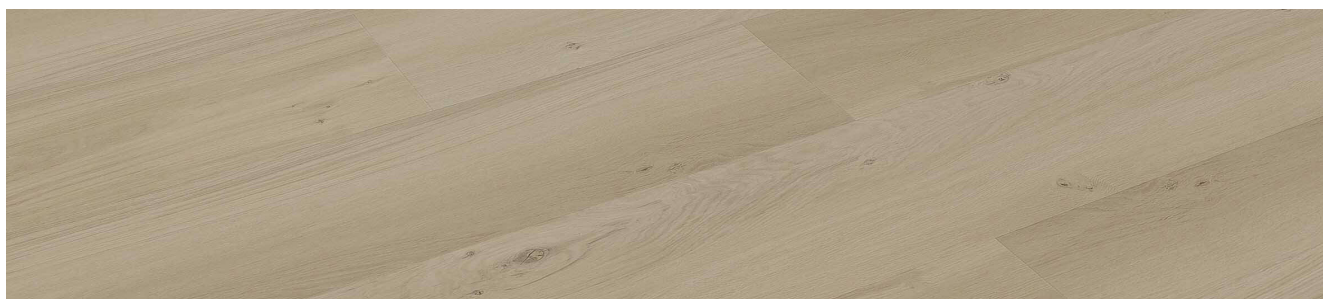
7.



8.



9.



### SELECTION DETAILS

- |   |  |
|---|--|
| 1. Kitchen & Bath Cabinets - Shaker Style - Matte Storm         | 6. Carpet - Mohawk Tectonic - 969 Steelbeam              |
| 2. Kitchen Backsplash - Ames - Regoli - Bianco White - 3" x 12" | 7. Cloverdale Artisan Paint - Wall: CA028 Mist           |
| 3. Hardware - Richelieu - Metal Pull 7348 - Brushed Nickel      | 8. Cloverdale Artisan Paint - Trim: CA025 Standard White |
| 4. Countertops - Jadestone Quartz - Whistler                    | 9. Luxury Vinyl Plank - Unifloor - EC81107 Bluebell      |
| 5. Luxury Vinyl Tile - Unifloor - EC72934 Limestone - 12" x 24" |  |

**Note:** Products featured in our catalogue may differ from physical samples. Variations in colour, texture, and appearance can occur due to various factors, including differences in manufacturing batches, natural variations in materials, and the influence of lighting in photography and printing. We make every effort to ensure that our catalogue accurately represents our products, but we cannot guarantee an exact match to physical samples.

## YORK

3 Bed | 2.5 Bath | 1,679 sq. ft.

438 South Shore Drive  
Chestermere, Alberta  
Block 8 | Lot 13

10.



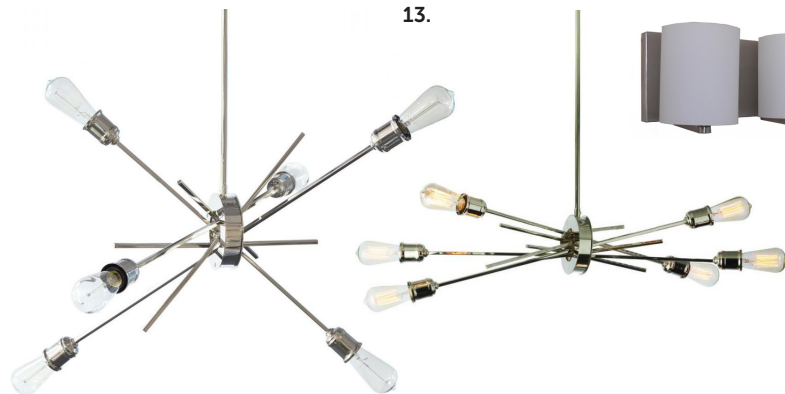
11.



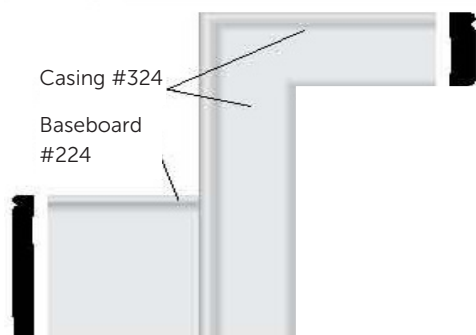
12.



13.



14.



15.



16.



17.



### SELECTION DETAILS

- |  |  |
|--|--|
| 10. Kitchen Sink - Blanco Essential U2 400008                | 14. Casing - Transition Baseboard & Casing                       |
| 11. Kitchen Faucet - Delta Osler 976LF 1H - Polished Chrome  | 15. Front Door Hardware - Weiser Troy Satin Chrome Collection    |
| 12. Bathroom Plumbing - Delta Wynne Collection - Chrome      | 16. Interior Door Hardware - Weiser Troy 26D Knob - Satin Chrome |
| 13. Lighting - Standard Lighting Package - Silver Collection | 17. Interior Door - Benton 5 Panel Raised Door                   |

**Note:** Products featured in our catalogue may differ from physical samples. Variations in colour, texture, and appearance can occur due to various factors, including differences in manufacturing batches, natural variations in materials, and the influence of lighting in photography and printing. We make every effort to ensure that our catalogue accurately represents our products, but we cannot guarantee an exact match to physical samples.