



## ALDER estate

### features

- Open Concept Living Area
- Spacious Gourmet Kitchen
- Engineered Hardwood Flooring
- Ceramic Tile
- Stainless Steel Appliance Package
- Quartz Countertops Throughout
- Walk-in Kitchen Pantry
- Mudroom w/ W.I.C.
- Luxurious Ensuite
- Expansive Primary W.I.C.
- Upper Floor Bonus Room
- Upper Floor Laundry Room
- Covered Deck
- Gas Fireplace in Great Room
- Open-to-Above Entry
- Attached Triple Car Garage
- Triple Pane Windows

2,390 sq. ft.

3 Bed

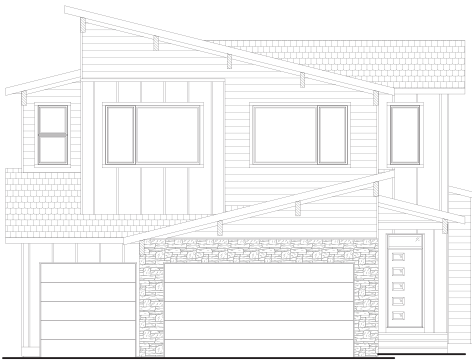
2.5 Bath



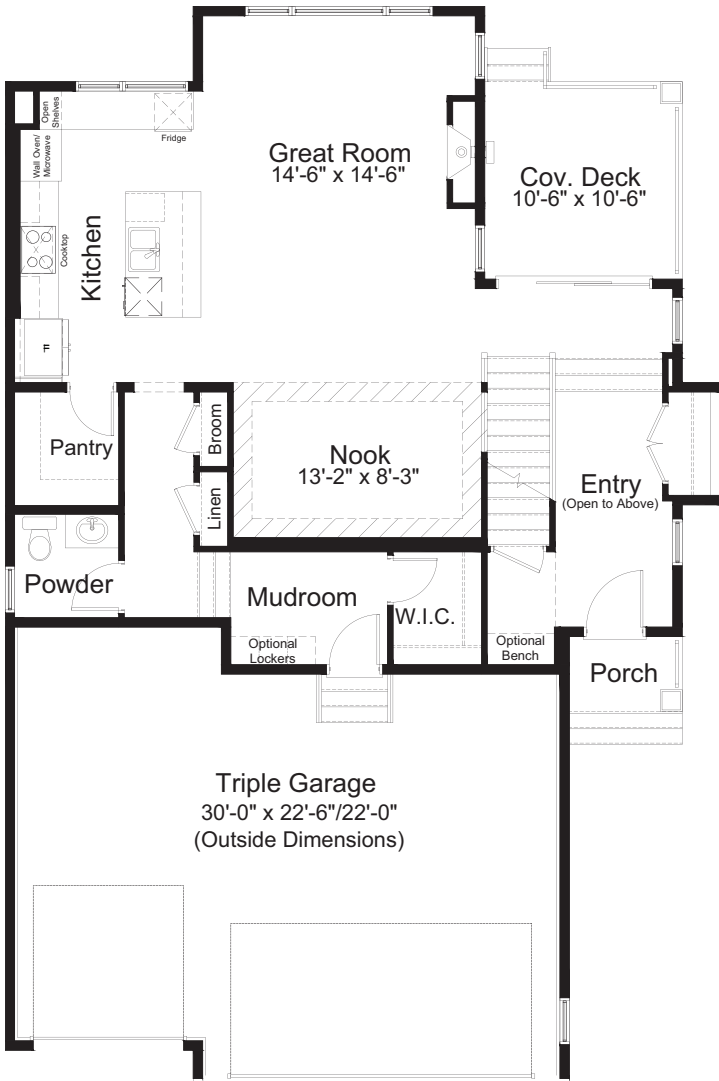
ALDER

3 Bed      2.5 Bath      2,390 sq. ft.

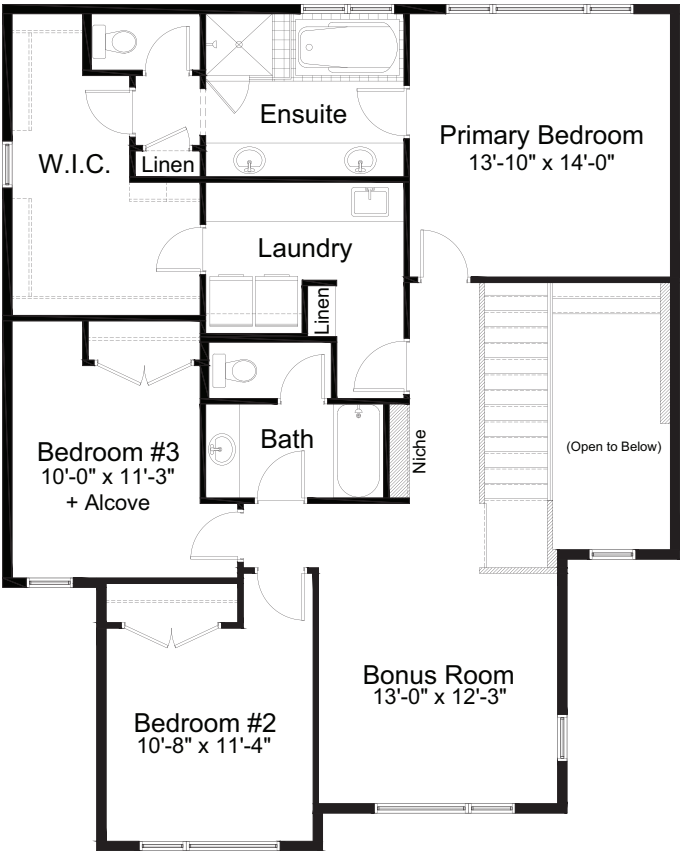
standard plan



MODERN BEACH ELEVATION



MAIN FLOOR 1,058 sq. ft.



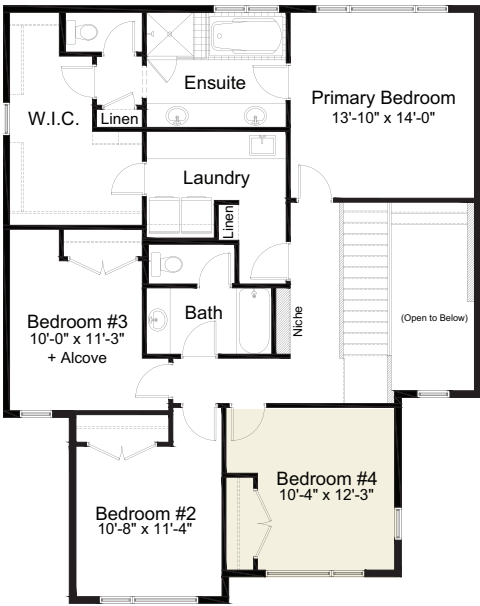
UPPER FLOOR 1,332 sq. ft.



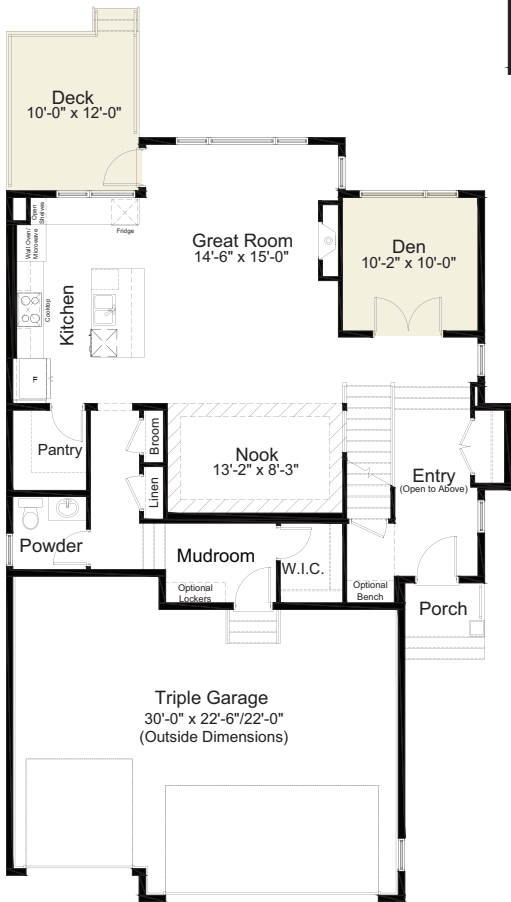
ALDER

3 Bed      2.5 Bath      2,390 sq. ft.

pre-planned options

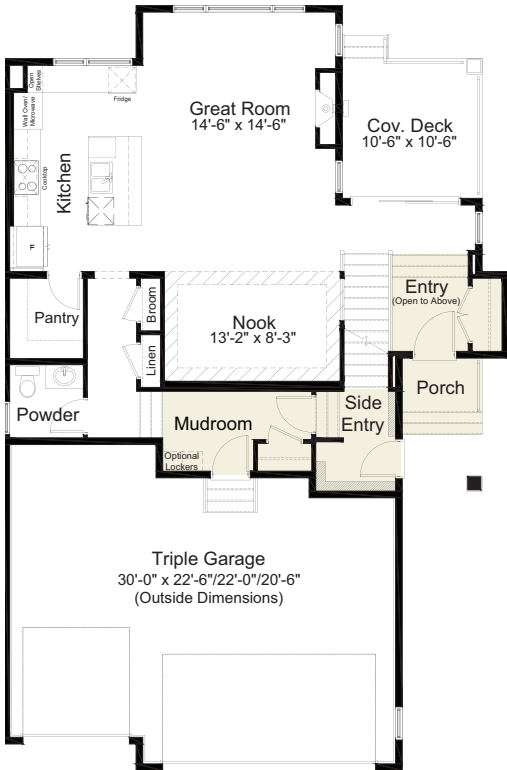


4<sup>th</sup> Bedroom Option



Den Option

(compatible with Side Entry Option)  
main floor: 1,168 sq. ft.  
total: 2,500 sq. ft.



Side Entry Option

main floor: 1,027 sq. ft.  
total: 2,359 sq. ft.

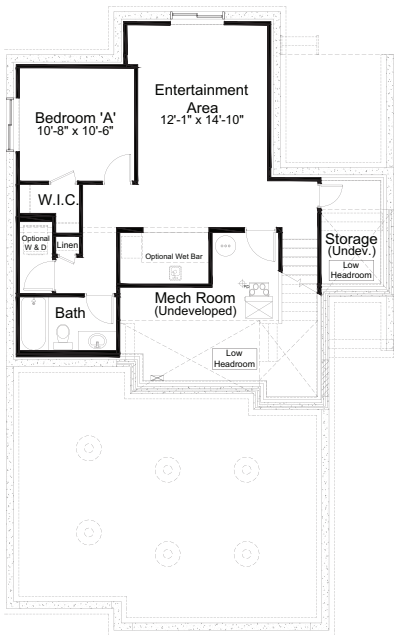
→  
more options



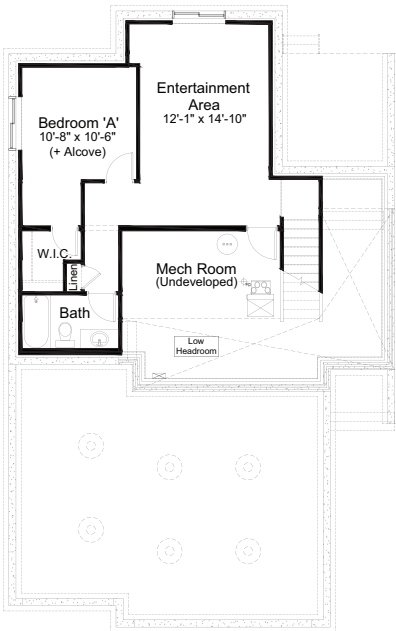
ALDER

3 Bed      2.5 Bath      2,390 sq. ft.

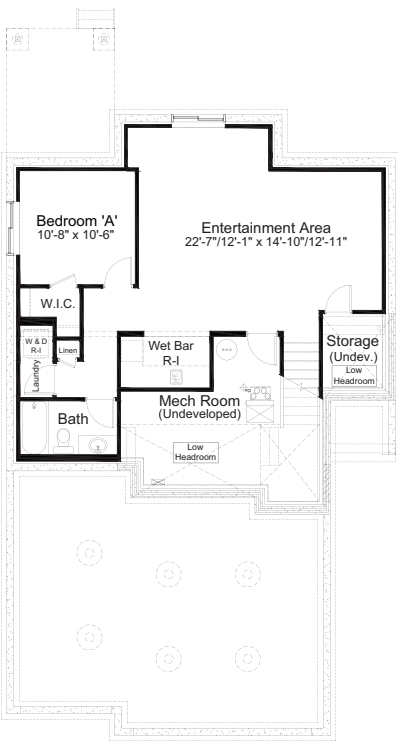
pre-planned options



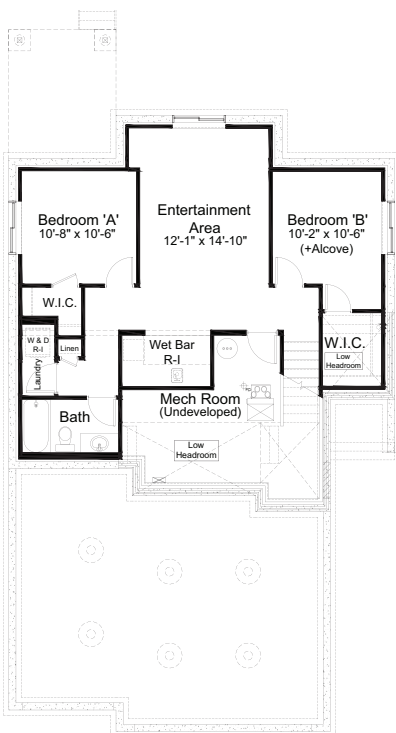
Side Entry Option w/ Basement Development  
& Rough-in Items  
626 sq. ft.



Basement Development Option  
(compatible with Side Entry Option)  
560 sq. ft.



Side Entry Option w/ Den Option, Basement  
Development & Rough-in Items  
626 sq. ft.



Side Entry Option w/ Den Option,  
2 Bed Basement Development & Rough-in Items  
755 sq. ft.

Edited: May 15, 2025  
The builder reserves the right to modify or change plans, specifications, features and prices without notice. Materials may be substituted with equivalent or better at the builder's sole discretion. All dimensions and sizes are approximate and are based on architectural measurements. As reverse, mirrored and/or flipped plans occur throughout the building, please see architectural plans if material to your decision to purchase. Renderings, furnishings and equipment shown are an artist's conception and are intended as a general reference only. Please see disclosure statement for specific offering details. E. & O.E.