

# alliston

AT HOME



## BURNET estate bungalow

### features

- Open Concept Living Area
- Spacious Gourmet Kitchen
- Engineered Hardwood Flooring
- Ceramic Tile
- Stainless Steel Appliance Package
- Quartz Countertops Throughout
- Mudroom w/ Lockers
- 3<sup>rd</sup> Bedroom/Den
- Large Rear Deck
- Luxurious Ensuite & W.I.C.
- Gas Fireplace in Great Room
- Raised Ceilings in Great Room
- Main Floor Bedroom w/ Full Bath
- Attached Triple Car Garage
- Triple Pane Windows

1,626 sq. ft.

3 Bed

2 Bath



403-235-0012

southshore@allistongroup.ca



# BURNET BUNGALOW

3 Bed

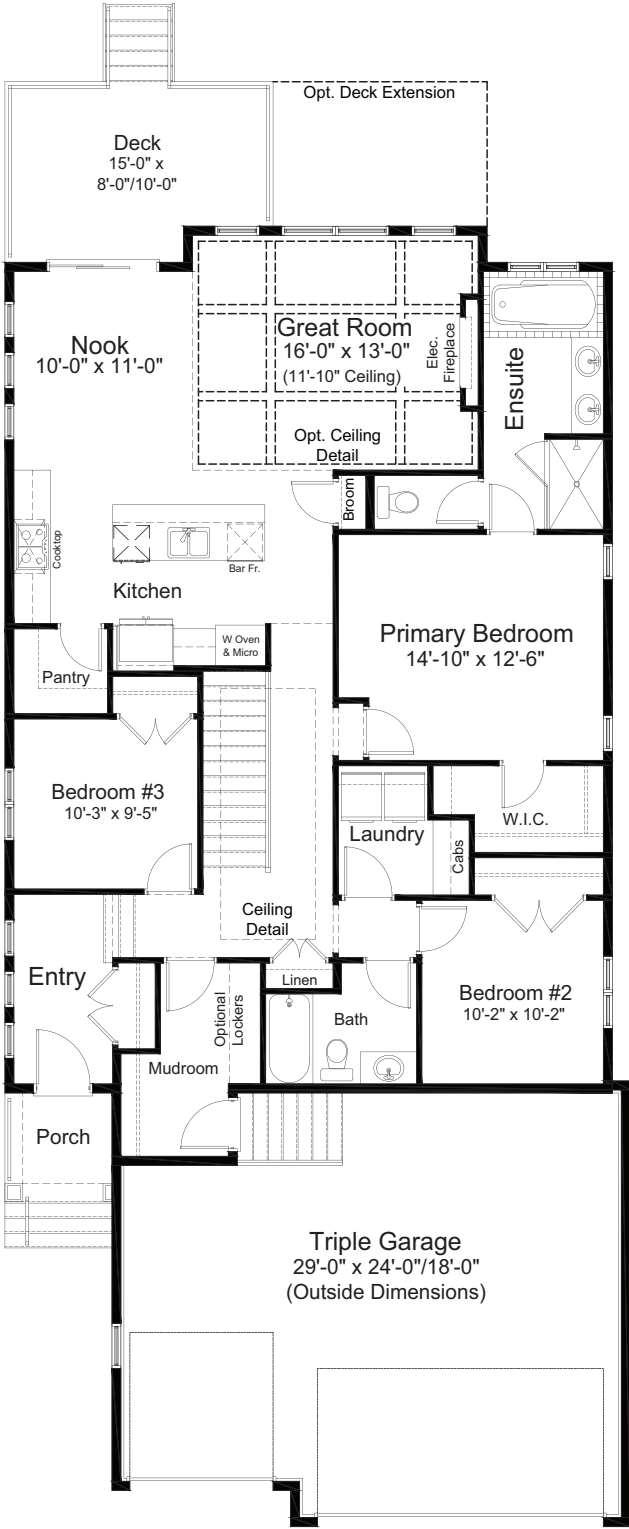
2 Bath

1,626 sq. ft.

## standard plan



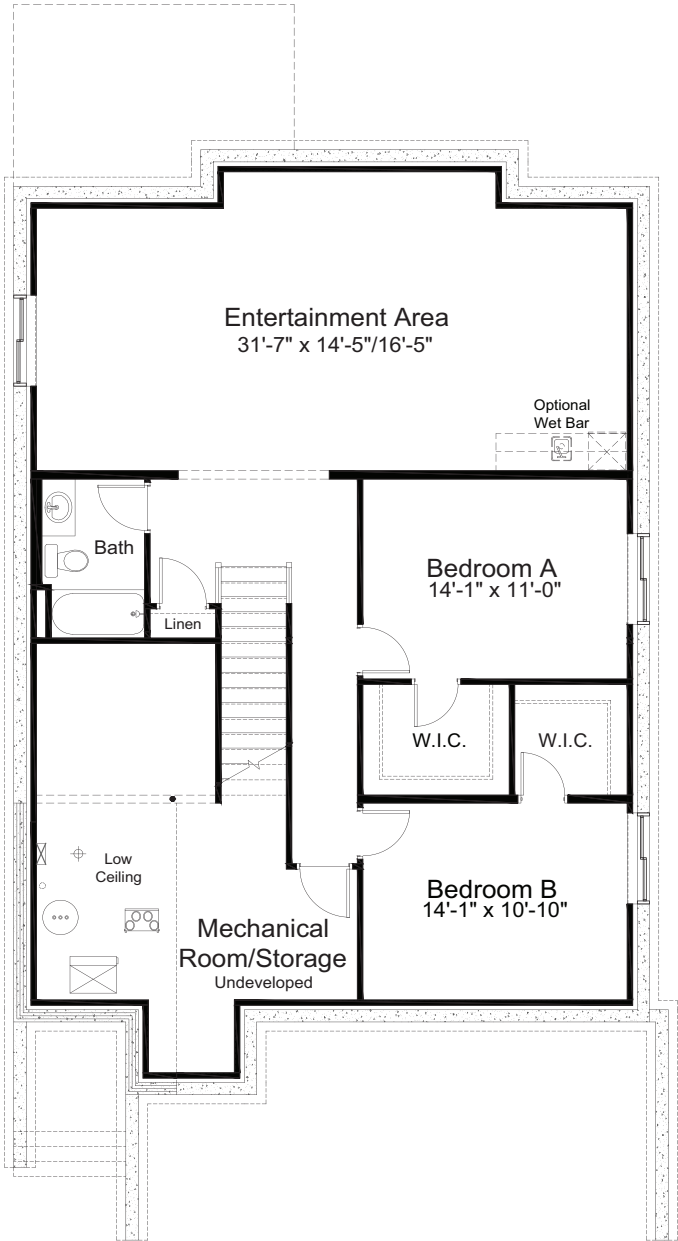
ALBERTA CRAFTSMAN ELEVATION



MAIN FLOOR 1,626 sq. ft.



pre-planned options

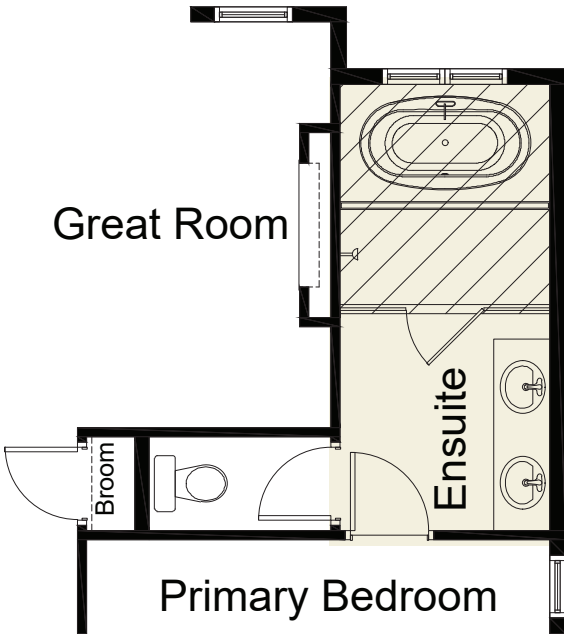


**Basement Development Option**  
1,166 sq. ft.

→  
*more options*



pre-planned options



Ensuite Wet Room Option

Edited: March 19, 2025  
The builder reserves the right to modify or change plans, specifications, features and prices without notice. Materials may be substituted with equivalent or better at the builder's sole discretion. All dimensions and sizes are approximate and are based on architectural measurements. As reverse, mirrored and/or flipped plans occur throughout the building, please see architectural plans if material to your decision to purchase. Renderings, furnishings and equipment shown are an artist's conception and are intended as a general reference only. Please see disclosure statement for specific offering details. E. & O.E.