



features

- Open Concept Living Area
- Spacious Gourmet Kitchen
- Engineered Hardwood Flooring
- Ceramic Tile
- Stainless Steel Appliance Package
- Quartz Countertops Throughout
- Mudroom w/ Lockers
- 3rd Bedroom/Den
- Large Rear Deck
- Luxurious Ensuite & W.I.C.
- Gas Fireplace in Great Room
- Raised Ceilings in Great Room
- Main Floor Bedroom w/ Full Bath
- Attached Triple Car Garage
- Triple Pane Windows

BURNET

estate bungalow

1,626 sq. ft.

3 Bed

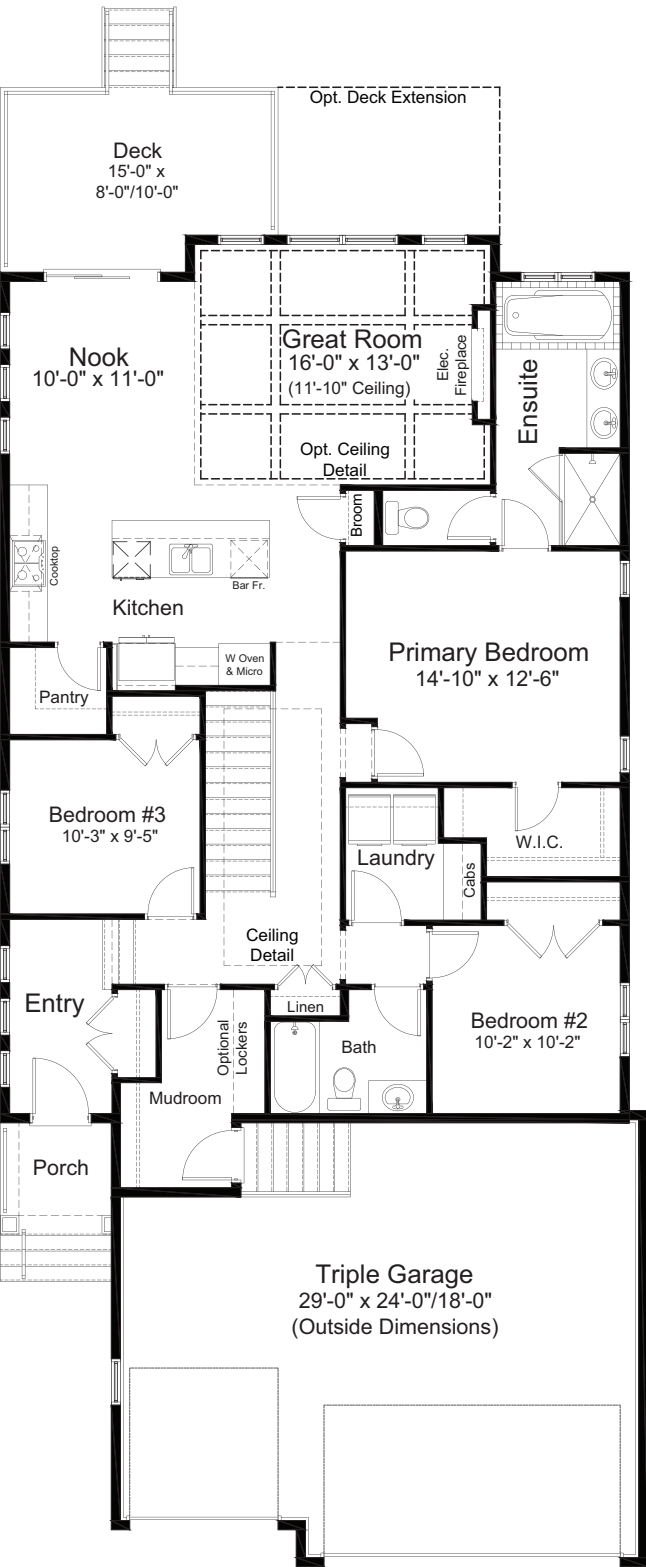
2 Bath



BURNET BUNGALOW

3 Bed 2 Bath 1,626 sq. ft.

standard plan



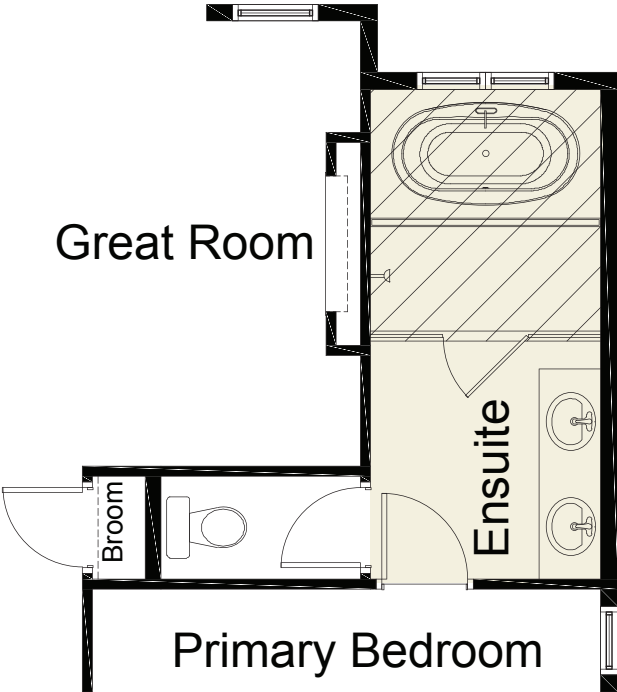
MAIN FLOOR 1,626 sq. ft.



ALBERTA CRAFTSMAN ELEVATION



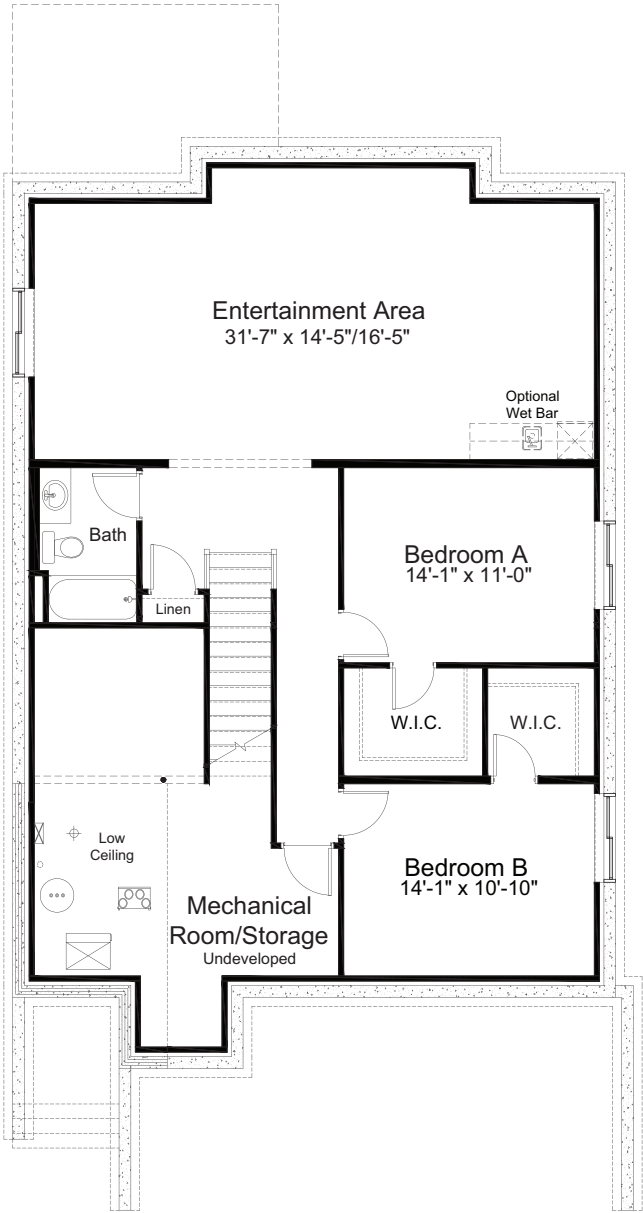
pre-planned options



Ensuite Wet Room Option



pre-planned options



Basement Development Option
1,166 sq. ft.

Edited: May 15, 2025
The builder reserves the right to modify or change plans, specifications, features and prices without notice. Materials may be substituted with equivalent or better at the builder's sole discretion. All dimensions and sizes are approximate and are based on architectural measurements. As reverse, mirrored and/or flipped plans occur throughout the building, please see architectural plans if material to your decision to purchase. Renderings, furnishings and equipment shown are an artist's conception and are intended as a general reference only. Please see disclosure statement for specific offering details. E. & O.E.