

alliston

AT HOME



SORREL estate

features

- Open Concept Living Area
- Spacious Gourmet Kitchen
- Engineered Hardwood Flooring
- Ceramic Tile
- Stainless Steel Appliance Package
- Quartz Countertops Throughout
- Generous Butler's Pantry
- Mudroom
- Upper Floor Laundry
- Main Floor Flex Room
- Large Rear Deck
- Luxurious Ensuite & W.I.C.
- Upper Floor Bonus Room
- Gas Fireplace in Great Room
- Open-to-Above Great Room
- Attached Triple Car Garage
- Triple Pane Windows

2,854 sq. ft.

3 Bed

2.5 Bath



403-235-0012

southshore@allistongroup.ca



SORREL

3 Bed

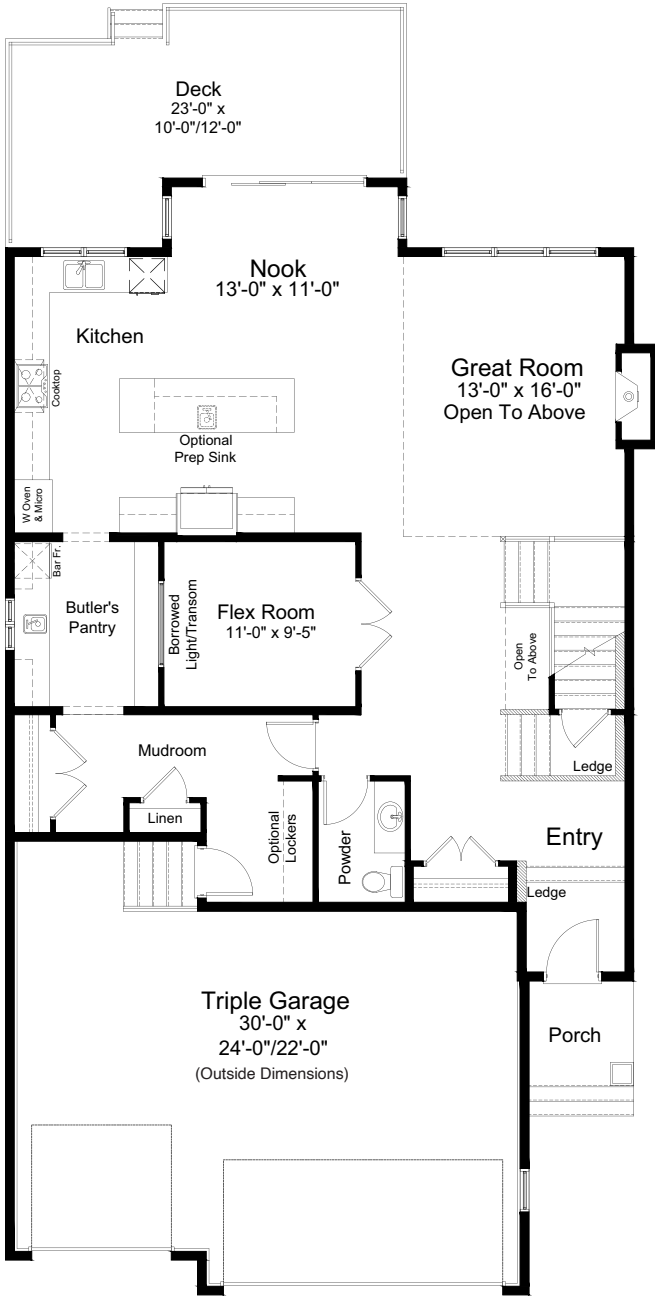
2.5 Bath

2,854 sq. ft.

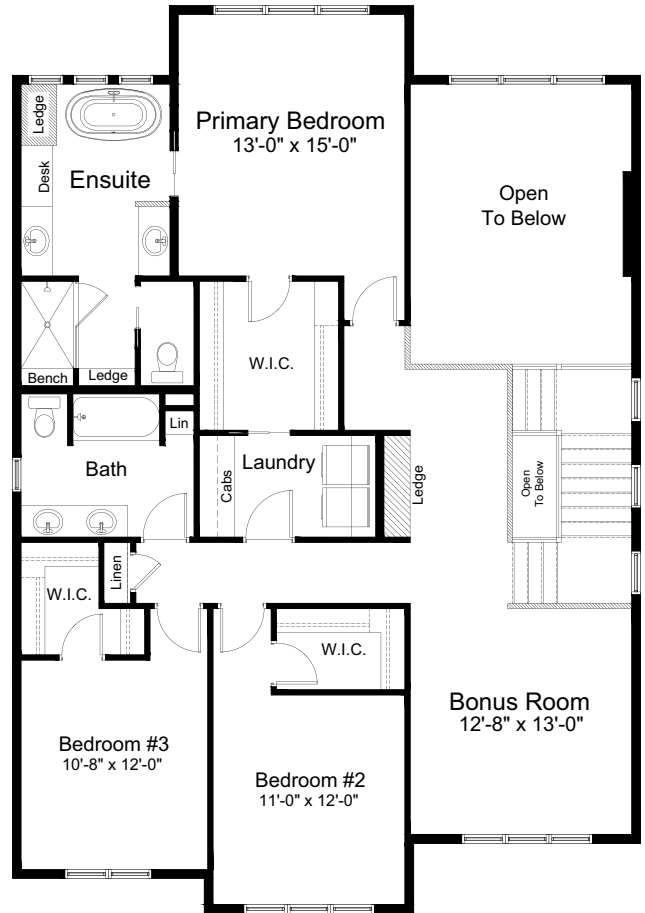
standard plan



ALBERTA CRAFTSMAN ELEVATION



MAIN FLOOR 1,407 sq. ft.



UPPER FLOOR 1,447 sq. ft.



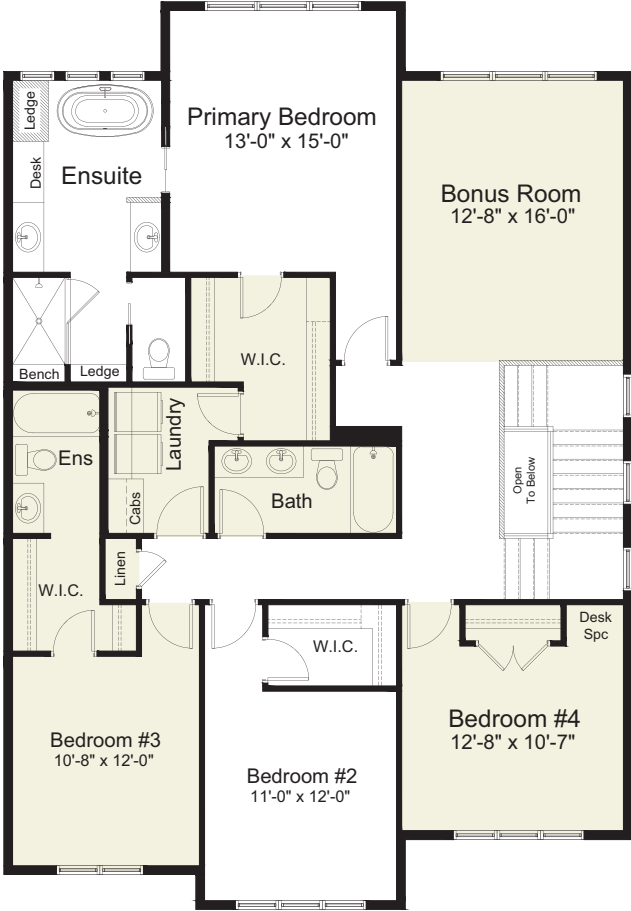
pre-planned options



Main Floor Bedroom and Full Bath Option
1,407 sq. ft.



pre-planned options



Upper Floor 4th Bedroom and 2nd Bath Option
1,695 sq. ft.

Edited: February 6, 2025
The builder reserves the right to modify or change plans, specifications, features and prices without notice. Materials may be substituted with equivalent or better at the builder's sole discretion. All dimensions and sizes are approximate and are based on architectural measurements. As reverse, mirrored and/or flipped plans occur throughout the building, please see architectural plans if material to your decision to purchase. Renderings, furnishings and equipment shown are an artist's conception and are intended as a general reference only. Please see disclosure statement for specific offering details. E. & O.E.