

alliston
AT HOME

QUICK POSSESSION



BROADWAY

3 Bed | 2.5 Bath | 1,839 sq. ft.

254 South Shore Court
Chestermere, Alberta
Block 5 | Lot 39

403-235-0012
southshore@allistongroup.ca
allistongroup.ca

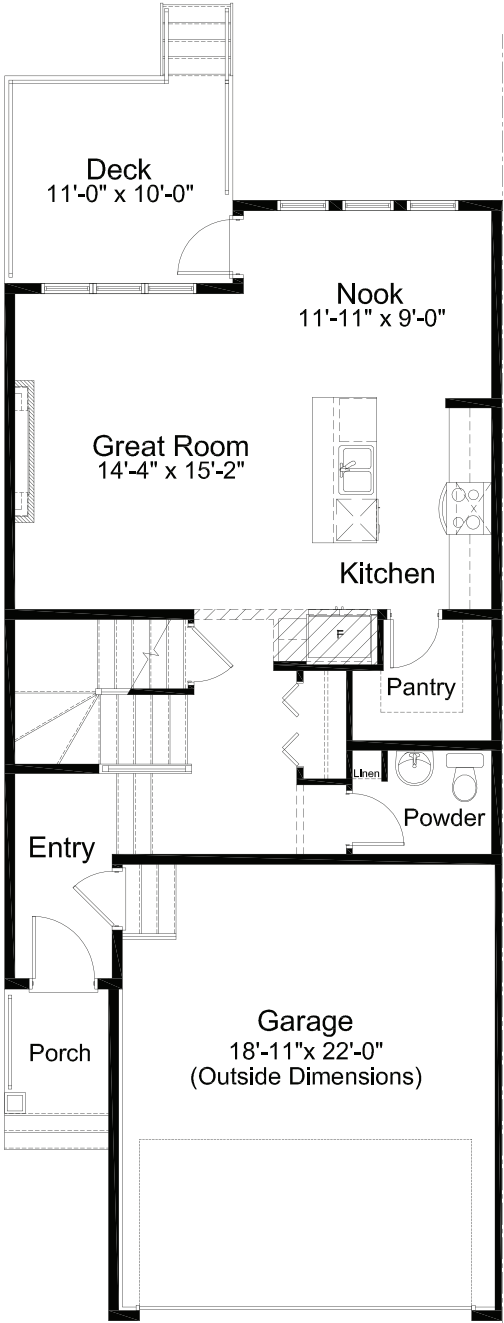


- Open Concept Living Area
- Luxury Vinyl Plank Flooring
- Luxury Vinyl Tile
- Stainless Steel Appliance Package
- Whirlpool Washer & Dryer Set
- Quartz Countertops Throughout
- Walk-in Kitchen Pantry
- Electric Fireplace in Great Room
- 5-piece Ensuite & W.I.C.
- Upper Floor Laundry
- Rear Deck
- Upper Floor Loft
- Attached Double Car Garage
- Triple Pane Windows

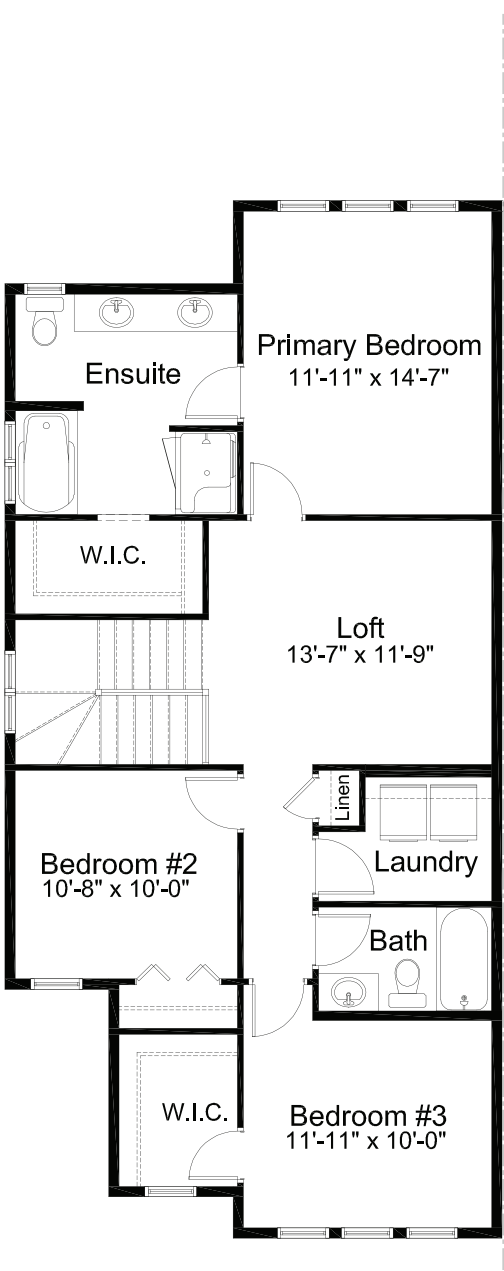
Edited: February 20, 2025
The builder reserves the right to modify or change plans, specifications, features and prices without notice. Materials may be substituted with equivalent or better at the builder's sole discretion. All dimensions and sizes are approximate and are based on architectural measurements. As reverse, mirrored and/or flipped plans occur throughout the building, please see architectural plans if material to your decision to purchase. Renderings, furnishings and equipment shown are an artist's conception and are intended as a general reference only. Please see disclosure statement for specific offering details. E. & O.E.



ELEVATION



MAIN FLOOR 757 sq. ft.



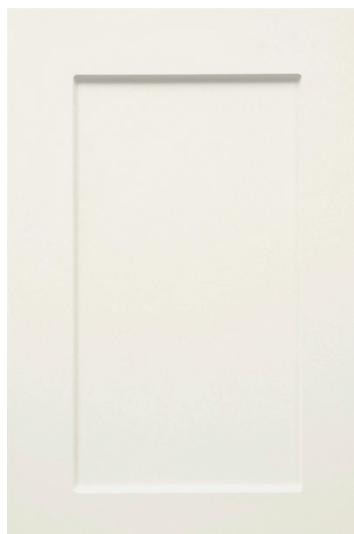
UPPER FLOOR 1,082 sq. ft.

BROADWAY

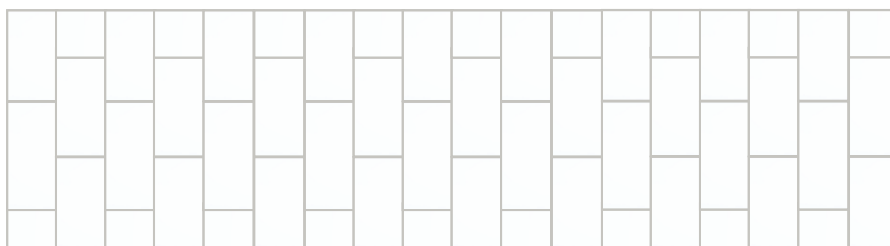
3 Bed | 2.5 Bath | 1,839 sq. ft.

254 South Shore Court
Chestermere, Alberta
Block 5 | Lot 39

1.



2.



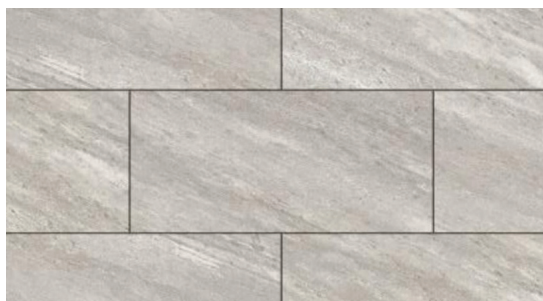
3.



4.



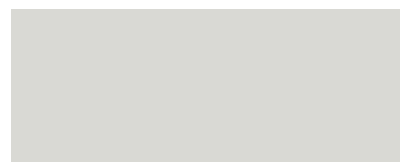
5.



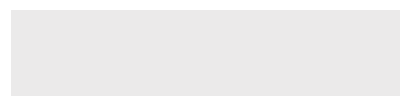
6.



7.



8.



9.



SELECTION DETAILS

- | | |
|---|---|
| 1. Kitchen & Bath Cabinets - Chesapeake Shaker - Euro White | 6. Carpet - Mohawk SP025 03 |
| 2. Wall Tile - Ceratec Tile - Essential Bianco Glossy - 3" x 6" | 7. Cloverdale Artisan Paint - Wall: CA028 Mist |
| 3. Hardware - Richelieu - Metal Pull 8189 - Brushed Nickel | 8. Cloverdale Artisan Paint - Trim: CA025 Standard White |
| 4. Kitchen & Bath Countertops - Silestone Quartz - Grey Expo | 9. Luxury Vinyl Plank - Taiga Arizona Series - Scottsdale |
| 5. Luxury Vinyl Tile - Taiga Stonewear+ - Grey Silt - 12" x 24" | |

Note: Products featured in our catalogue may differ from physical samples. Variations in colour, texture, and appearance can occur due to various factors, including differences in manufacturing batches, natural variations in materials, and the influence of lighting in photography and printing. We make every effort to ensure that our catalogue accurately represents our products, but we cannot guarantee an exact match to physical samples. Last Edited: April 21, 2025

BROADWAY

3 Bed | 2.5 Bath | 1,839 sq. ft.

254 South Shore Court
Chestermere, Alberta
Block 5 | Lot 39

10.



11.



12.



13.



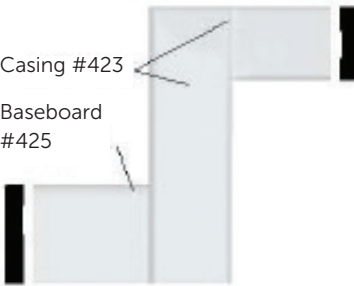
14.



15.

Casing #423

Baseboard #425



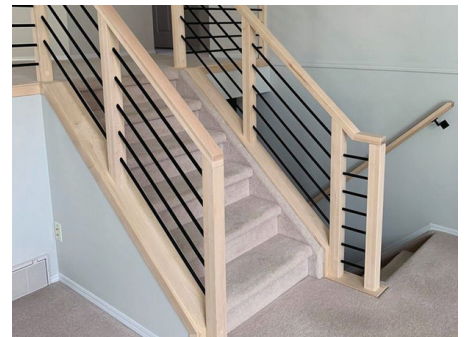
16.



17.



18.



SELECTION DETAILS

- | | |
|--|---|
| 10. Kitchen Sink - Blanco Essential U2 400008 | 15. Casing - Modern Baseboard & Casing |
| 11. Kitchen Faucet - Delta Osler 976LF 1H - Polished Chrome | 16. Door Hardware - Weiser Troy Collection - Satin Chrome |
| 12. Bathroom Faucet - Delta Wynne Collection | 17. Interior Door - Kingston 2 Panel Raised Door |
| 13. Bathroom Sink - Undermount American Standard Ovalyn | 18. Bahia Railing Design - Matte Black & CA025 Standard White |
| 14. Lighting - Standard Lighting Package w/ Kitchen Pendant Lights | |

Note: Products featured in our catalogue may differ from physical samples. Variations in colour, texture, and appearance can occur due to various factors, including differences in manufacturing batches, natural variations in materials, and the influence of lighting in photography and printing. We make every effort to ensure that our catalogue accurately represents our products, but we cannot guarantee an exact match to physical samples. Last Edited: April 21, 2025