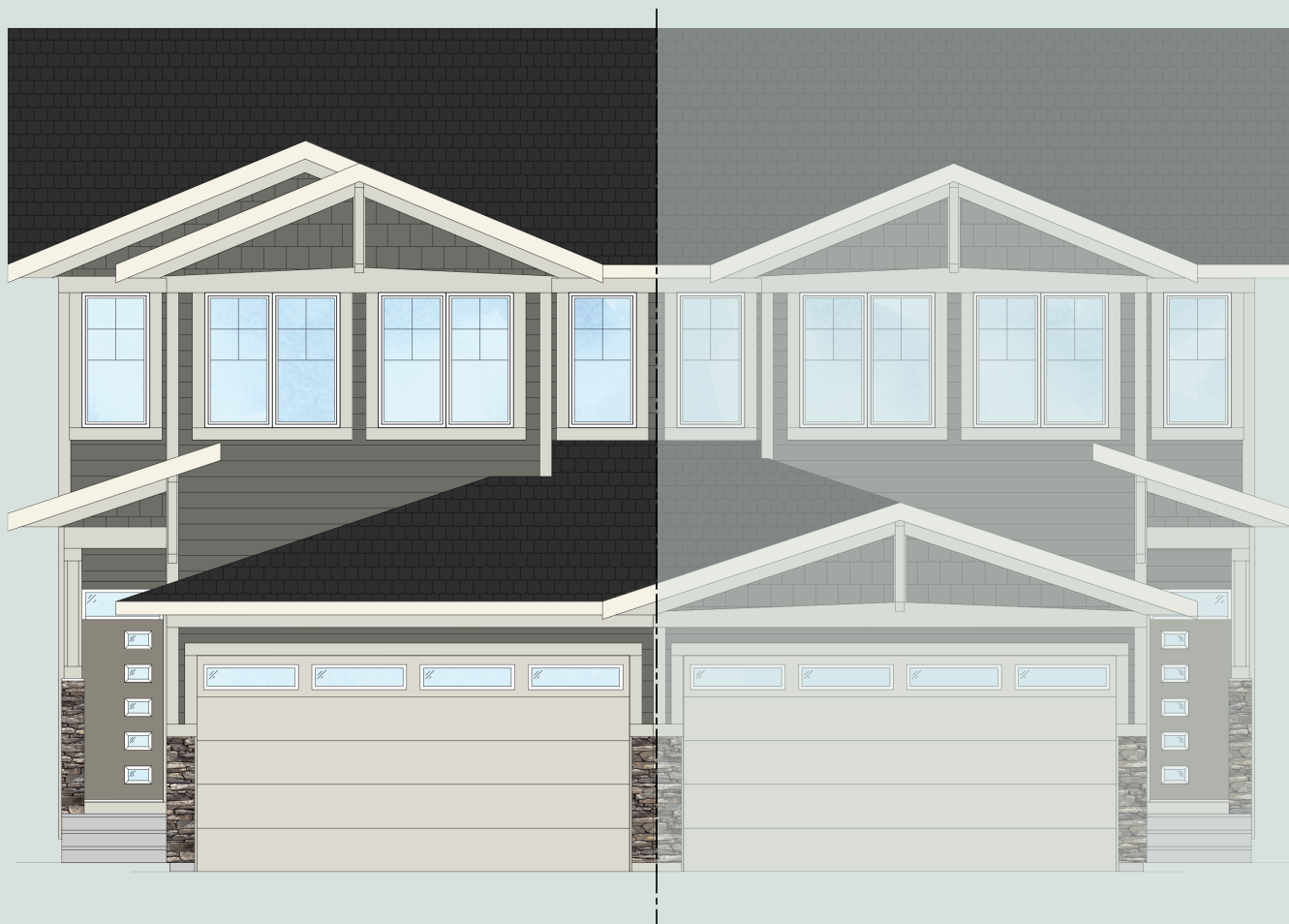


QUICK POSSESSION



YORK

3 Bed | 2.5 Bath | 1,679 sq. ft.

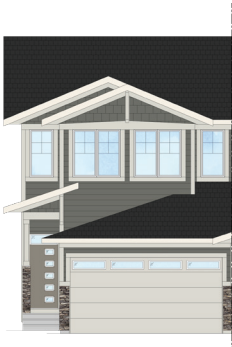
430 South Shore Drive
Chestermere, Alberta
Block 8 | Lot 11

403-235-0012
southshore@allistongroup.ca
allistongroup.ca

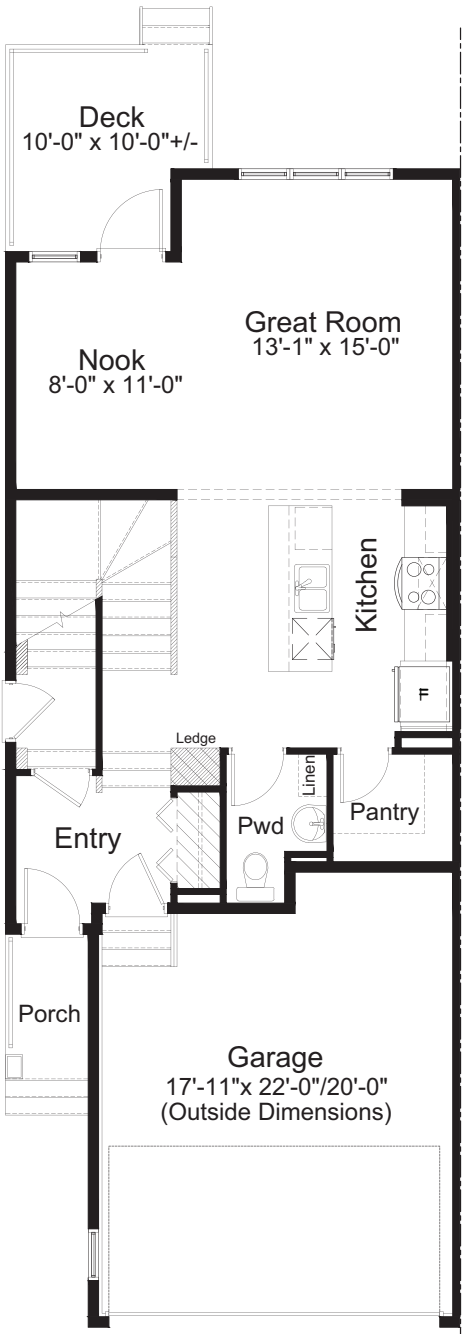


- Open Concept Living Area
- Luxury Vinyl Plank Flooring
- Luxury Vinyl Tile
- Stainless Steel Appliance Package
- Whirlpool Washer & Dryer Set
- Quartz Countertops Throughout
- Walk-in Kitchen Pantry
- 4-piece Ensuite & W.I.C.
- Upper Floor Laundry
- Rear Deck
- Attached Double Car Garage
- Triple Pane Windows

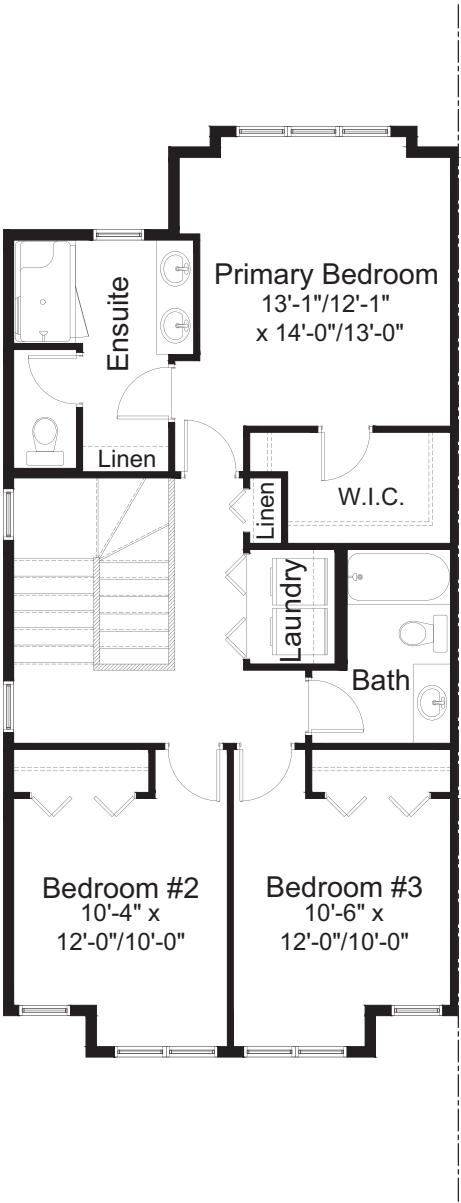
Edited: February 20, 2025
The builder reserves the right to modify or change plans, specifications, features and prices without notice. Materials may be substituted with equivalent or better at the builder's sole discretion. All dimensions and sizes are approximate and are based on architectural measurements. As reverse, mirrored and/or flipped plans occur throughout the building, please see architectural plans if material to your decision to purchase. Renderings, furnishings and equipment shown are an artist's conception and are intended as a general reference only. Please see disclosure statement for specific offering details. E. & O.E.



ELEVATION



MAIN FLOOR 749 sq. ft.



UPPER FLOOR 930 sq. ft.