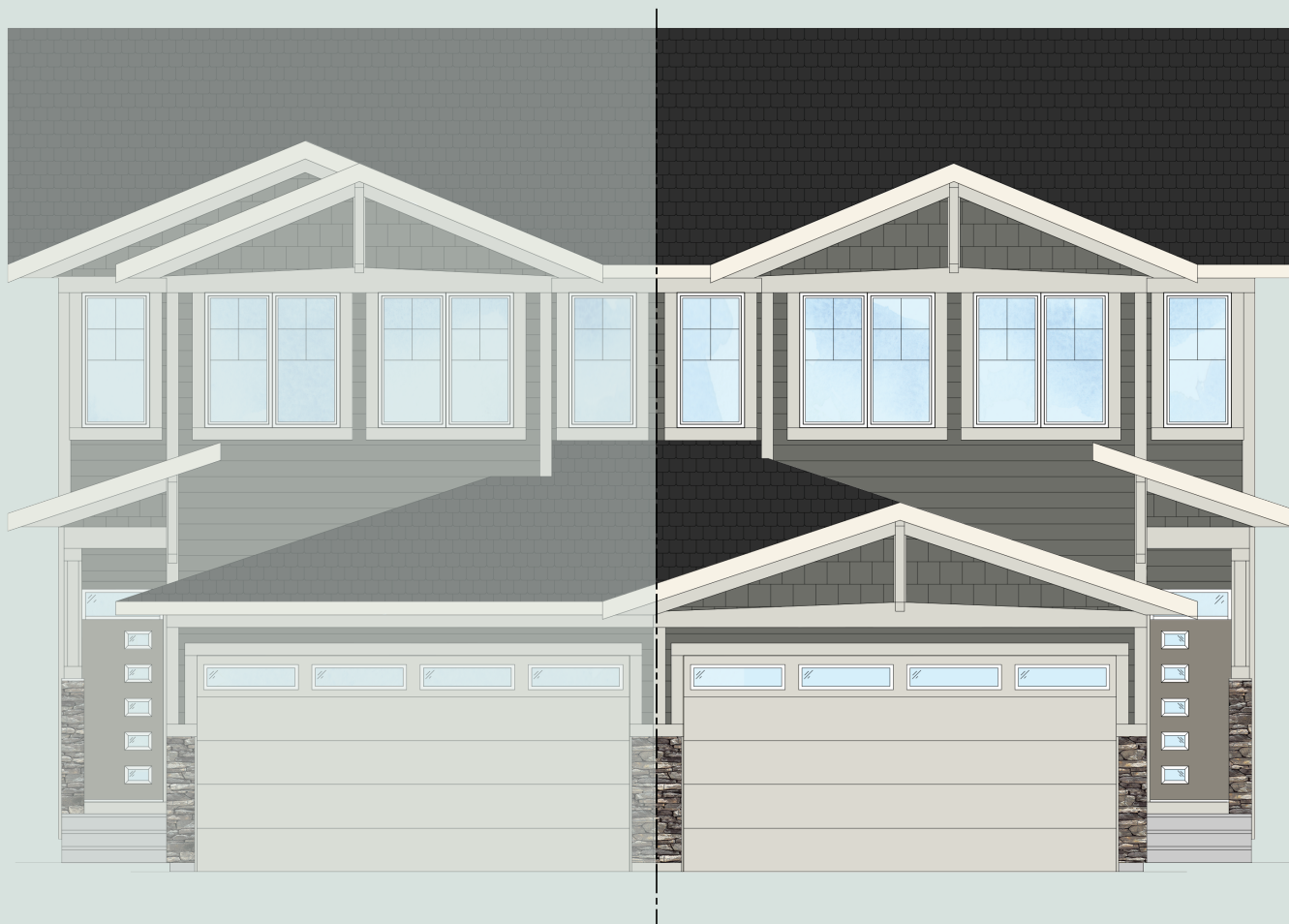


QUICK POSSESSION



YORK

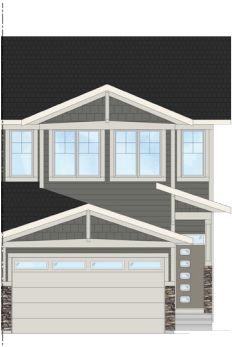
3 Bed | 2.5 Bath | 1,669 sq. ft.

434 South Shore Drive
Chestermere, Alberta
Block 8 | Lot 12

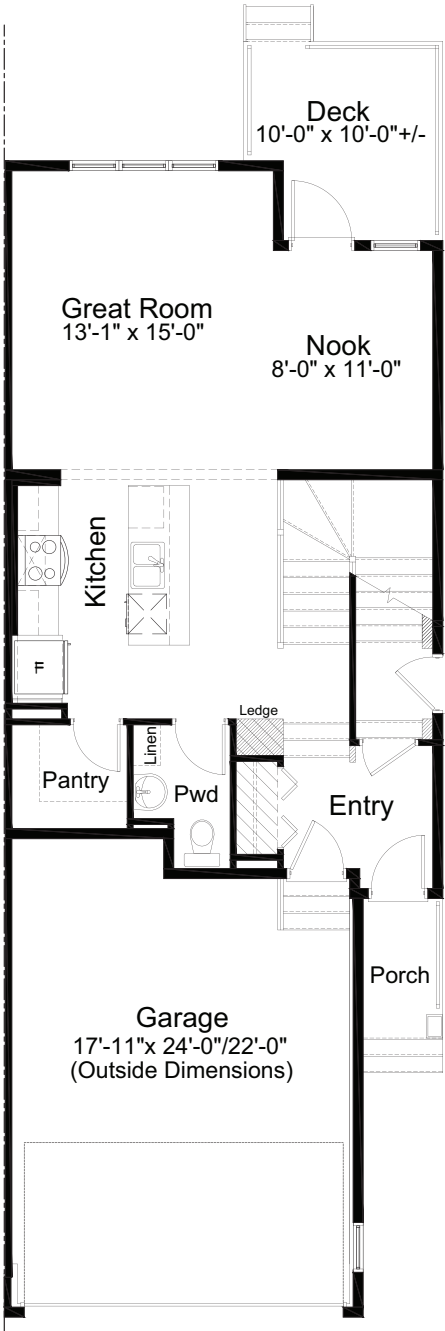
403-235-0012
southshore@allistongroup.ca
allistongroup.ca

- Open Concept Living Area
- Luxury Vinyl Plank Flooring
- Luxury Vinyl Tile
- Stainless Steel Appliance Package
- Whirlpool Washer & Dryer Set
- Quartz Countertops Throughout
- Upgraded Kitchen Backsplash
- Walk-in Kitchen Pantry
- 4-piece Ensuite & W.I.C.
- Upgraded Ensuite Shower w/ Niche
- Upper Floor Laundry
- Rear Deck
- Woodruff Railing Design
- Attached Double Car Garage
- Triple Pane Windows

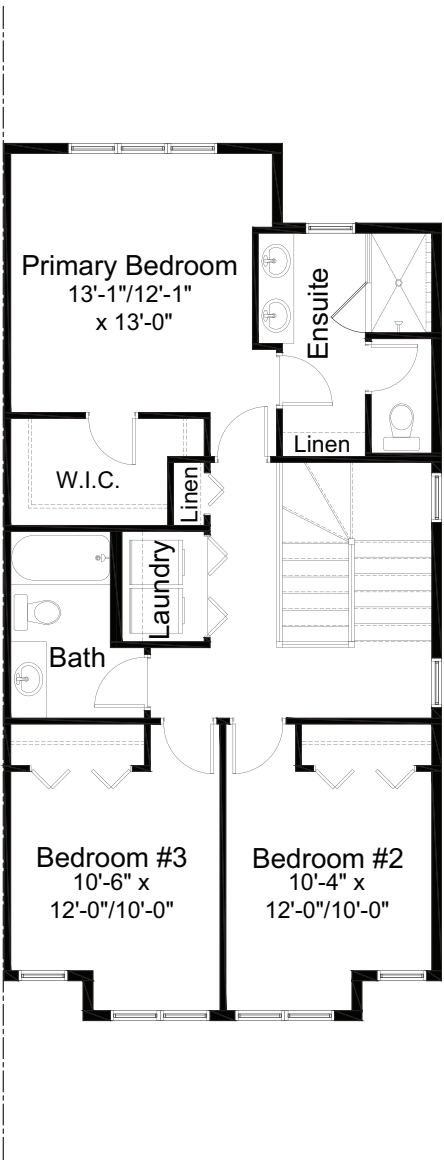
Edited: April 21, 2025
The builder reserves the right to modify or change plans, specifications, features and prices without notice. Materials may be substituted with equivalent or better at the builder's sole discretion. All dimensions and sizes are approximate and are based on architectural measurements. As reverse, mirrored and/or flipped plans occur throughout the building, please see architectural plans if material to your decision to purchase. Renderings, furnishings and equipment shown are an artist's conception and are intended as a general reference only. Please see disclosure statement for specific offering details. E. & O.E.



ELEVATION



MAIN FLOOR 749 sq. ft.



UPPER FLOOR 920 sq. ft.

YORK

3 Bed | 2.5 Bath | 1,669 sq. ft.

434 South Shore Drive
Chestermere, Alberta
Block 8 | Lot 12

1.



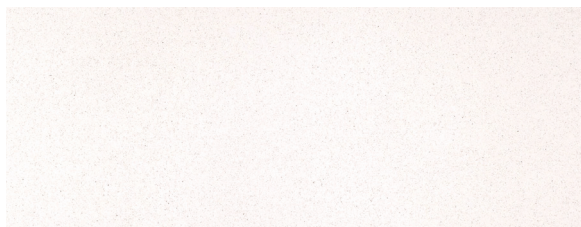
2.



3.



4.



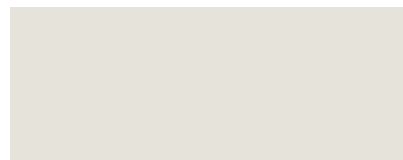
5.



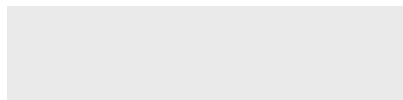
6.



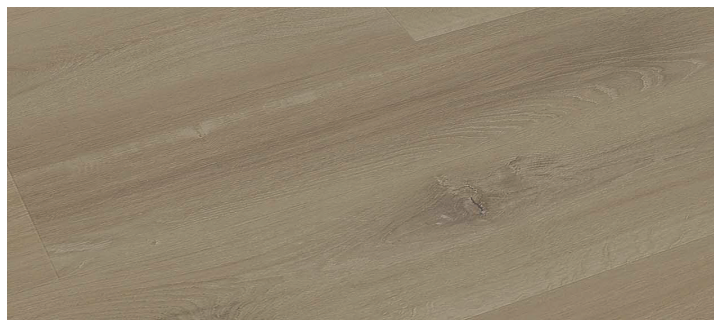
7.



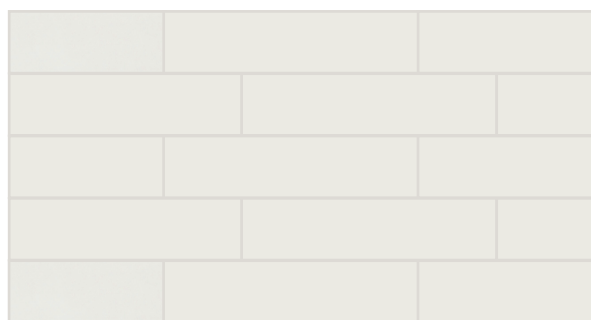
8.



9.



10.



SELECTION DETAILS

- | | |
|--|--|
| 1. Kitchen & Bath Cabinets - Slab Style - K41 Lago Aura | 6. Carpet - Mohawk Tectonic - 749 Stony Glade |
| 2. Kitchen Backsplash - Centura Tile - Hanoi - 4" x 4" | 7. Cloverdale Artisan Paint - Wall: CA020 Crystal |
| 3. Hardware - Richelieu - Metal Pull 7348 - Brushed Nickel | 8. Cloverdale Artisan Paint - Trim: CA025 Standard White |
| 4. Kitchen & Bath Countertops - Jadestone Quartz - White Sands | 9. Luxury Vinyl Plank - Unifloor - EC81108 Carnation |
| 5. Luxury Vinyl Tile - Unifloor - EC72933 Classico Carrara - 12" x 24" | 10. Bathroom Tile - Ceratec Tile - Essential Bianco Matte - 4" x 16" |

Note: Products featured in our catalogue may differ from physical samples. Variations in colour, texture, and appearance can occur due to various factors, including differences in manufacturing batches, natural variations in materials, and the influence of lighting in photography and printing. We make every effort to ensure that our catalogue accurately represents our products, but we cannot guarantee an exact match to physical samples. Last Edited: April 21, 2025

YORK

3 Bed | 2.5 Bath | 1,669 sq. ft.

434 South Shore Drive
Chestermere, Alberta
Block 8 | Lot 12

11.



12.



13.



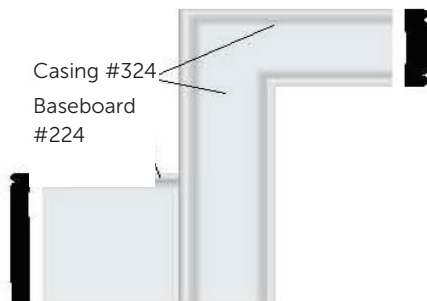
14.



15.



16.



17.



18.



19.



SELECTION DETAILS

- | | |
|--|--|
| 11. Kitchen Sink - Blanco Essential U2 400008 | 16. Casing - Transition Baseboard & Casing |
| 12. Kitchen Faucet - Delta Osler 976LF 1H - Polished Chrome | 17. Door Hardware - Weiser Troy Collection - Satin Chrome |
| 13. Bathroom Faucet - Delta Wynne Collection | 18. Interior Door - Benton 5 Panel Raised Door |
| 14. Bathroom Sink - Undermount American Standard Ovalyn | 19. Woodruff Railing Design - Painted CA025 Standard White |
| 15. Lighting - Standard Lighting Package w/ Kitchen Pendant Lights | |

Note: Products featured in our catalogue may differ from physical samples. Variations in colour, texture, and appearance can occur due to various factors, including differences in manufacturing batches, natural variations in materials, and the influence of lighting in photography and printing. We make every effort to ensure that our catalogue accurately represents our products, but we cannot guarantee an exact match to physical samples. Last Edited: April 21, 2025