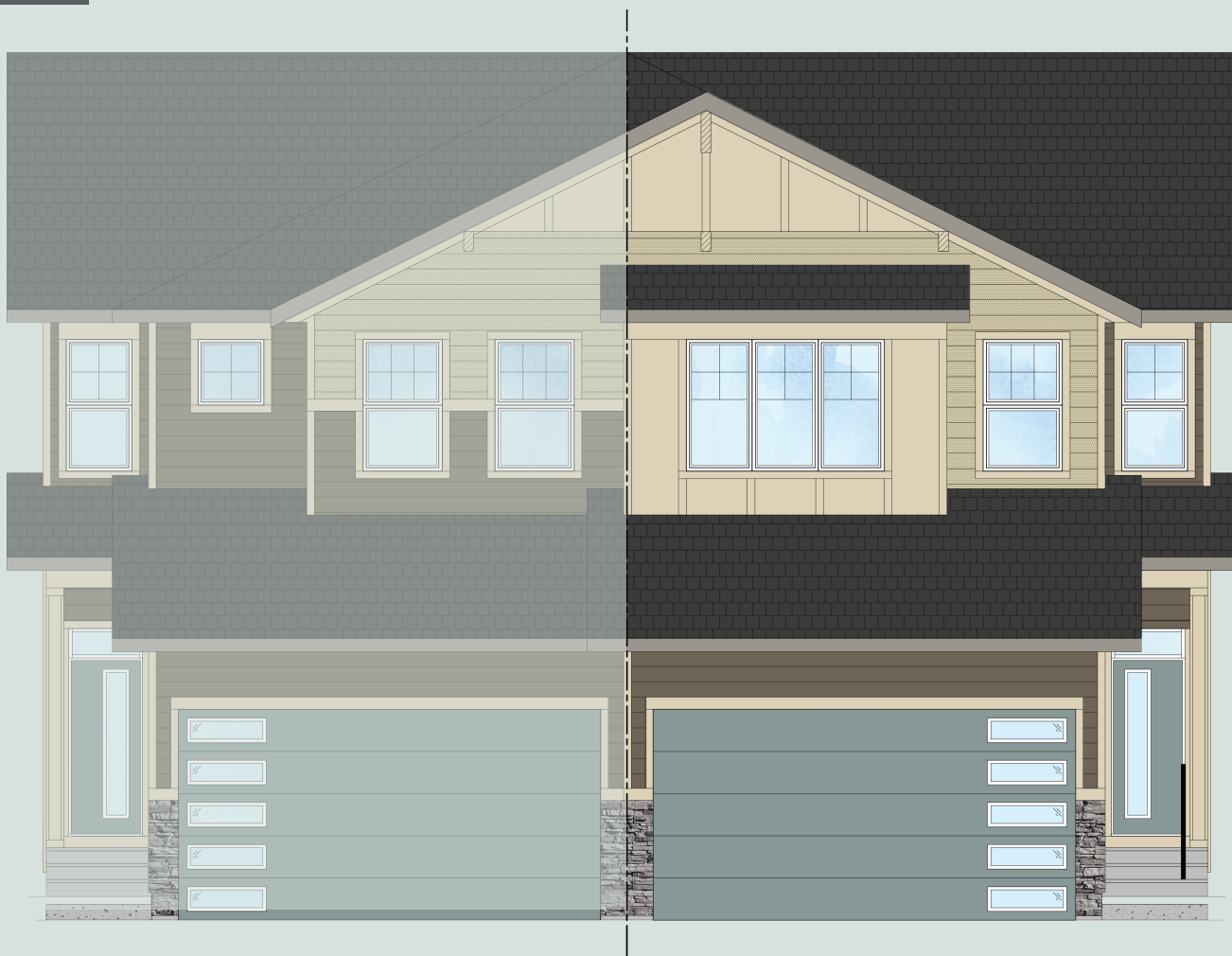


# QUICK POSSESSION



## MAPLE

3 Bed | 2.5 Bath | 1,803 sq. ft.

458 South Shore Drive  
Chestermere, Alberta  
Block 8 | Lot 18

403-235-0012  
southshore@allistongroup.ca  
allistongroup.ca

MAPLE

3 Bed

2.5 Bath

1,803 sq. ft.

458 South Shore Drive

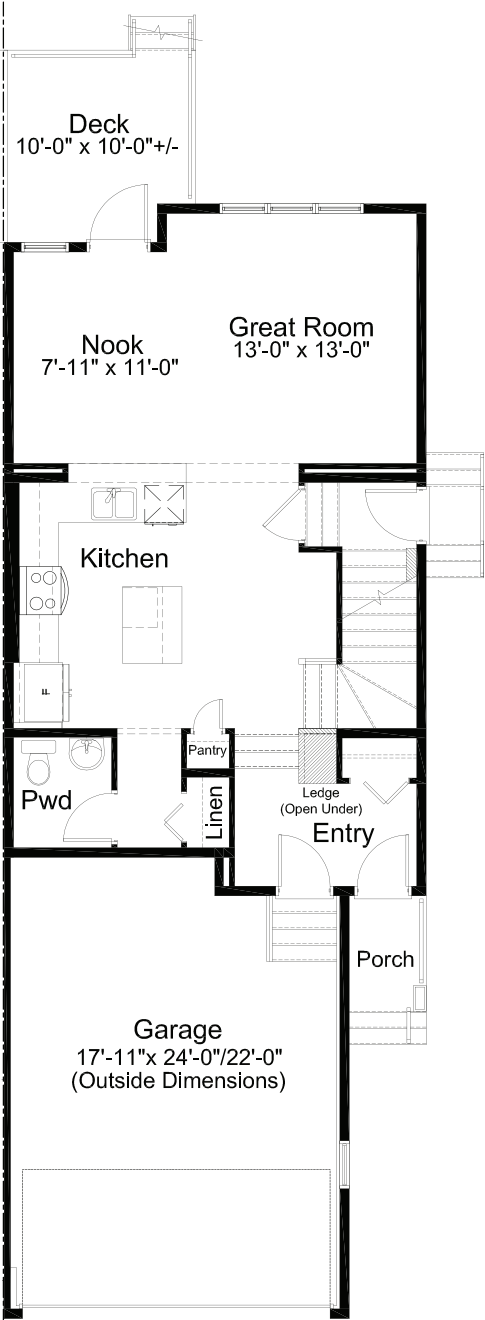
Block 8 | Lot 18

- Open Concept Living Area
- Luxury Vinyl Plank Flooring
- Luxury Vinyl Tile
- Stainless Steel Appliance Package
- Whirlpool Washer & Dryer Set
- Quartz Countertops Throughout
- Upgraded Kitchen Backsplash
- 4-piece Ensuite & W.I.C.
- Upper Floor Laundry
- Rear Deck
- Side Entry
- Woodruff Railing Design
- Attached Double Car Garage
- Triple Pane Windows

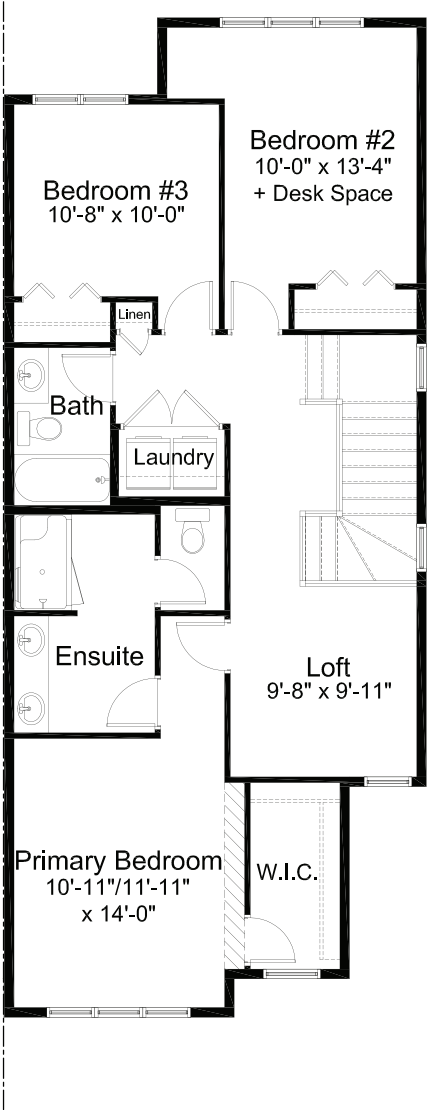
Edited: April 21, 2025  
The builder reserves the right to modify or change plans, specifications, features and prices without notice. Materials may be substituted with equivalent or better at the builder's sole discretion. All dimensions and sizes are approximate and are based on architectural measurements. As reverse, mirrored and/ or flipped plans occur throughout the building, please see architectural plans if material to your decision to purchase. Renderings, furnishings and equipment shown are an artist's conception and are intended as a general reference only. Please see disclosure statement for specific offering details. E. & O.E.



ELEVATION



MAIN FLOOR 753 sq. ft.



UPPER FLOOR 1,050 sq. ft.

## MAPLE

3 Bed | 2.5 Bath | 1,803 sq. ft.

458 South Shore Drive  
Chestermere, Alberta  
Block 8 | Lot 18

1.



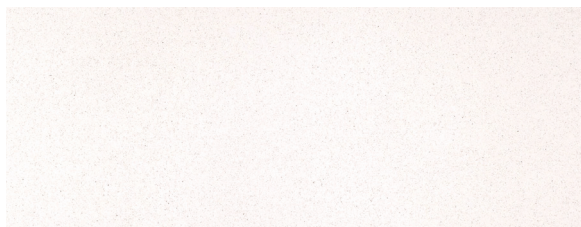
2.



3.



4.



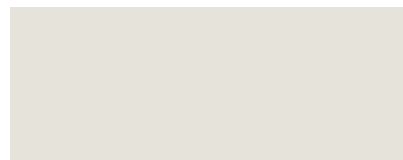
5.



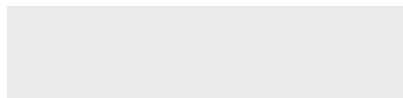
6.



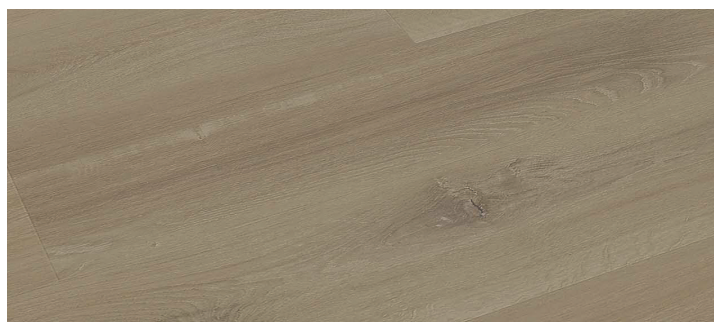
7.



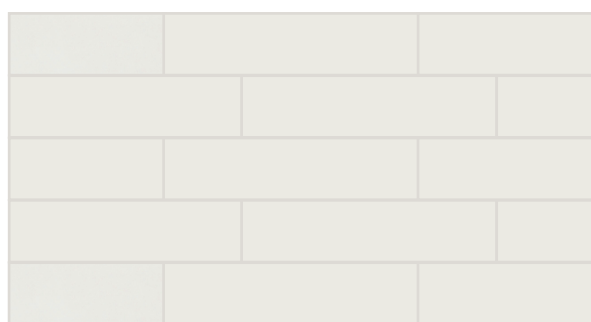
8.



9.



10.



### SELECTION DETAILS

- |  |  |
|--|--|
| 1. Kitchen & Bath Cabinets - Slab Style - K41 Lago Aura                | 6. Carpet - Mohawk Tectonic - 749 Stony Glade                        |
| 2. Kitchen Backsplash - Centura Tile - Hanoi - 4" x 4"                 | 7. Cloverdale Artisan Paint - Wall: CA020 Crystal                    |
| 3. Hardware - Richelieu - Metal Pull 7348 - Brushed Nickel             | 8. Cloverdale Artisan Paint - Trim: CA025 Standard White             |
| 4. Kitchen & Bath Countertops - Jadestone Quartz - White Sands         | 9. Luxury Vinyl Plank - Unifloor - EC81108 Carnation                 |
| 5. Luxury Vinyl Tile - Unifloor - EC72933 Classico Carrara - 12" x 24" | 10. Bathroom Tile - Ceratec Tile - Essential Bianco Matte - 4" x 16" |

**Note:** Products featured in our catalogue may differ from physical samples. Variations in colour, texture, and appearance can occur due to various factors, including differences in manufacturing batches, natural variations in materials, and the influence of lighting in photography and printing. We make every effort to ensure that our catalogue accurately represents our products, but we cannot guarantee an exact match to physical samples. Last Edited: April 21, 2025

## MAPLE

3 Bed | 2.5 Bath | 1,803 sq. ft.

458 South Shore Drive  
Chestermere, Alberta  
Block 8 | Lot 18

11.



12.



13.



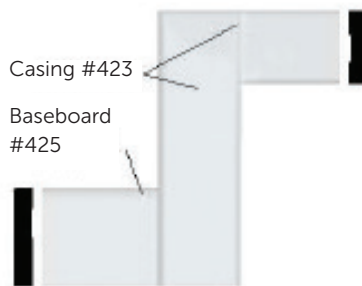
14.



15.



16.



17.



18.



19.



### SELECTION DETAILS

11. Kitchen Sink - Blanco Essential U2 400008
12. Kitchen Faucet - Delta Osler 976LF 1H - Polished Chrome
13. Bathroom Faucet - Delta Wynne Collection
14. Bathroom Sink - Undermount American Standard Ovalyn
15. Lighting - Standard Lighting Package w/ Kitchen Pendant Lights

16. Casing - Modern Baseboard & Casing
17. Door Hardware - Weiser Troy Collection - Satin Chrome
18. Interior Door - Kingston 2 Panel Raised Door
19. Woodruff Railing Design - Painted CA025 Standard White

**Note:** Products featured in our catalogue may differ from physical samples. Variations in colour, texture, and appearance can occur due to various factors, including differences in manufacturing batches, natural variations in materials, and the influence of lighting in photography and printing. We make every effort to ensure that our catalogue accurately represents our products, but we cannot guarantee an exact match to physical samples. Last Edited: April 21, 2025