

# QUICK POSSESSION



## WHITNEY

3 Bed | 2.5 Bath | 1,602 sq. ft.

207 South Shore Court  
Chestermere, Alberta  
Block 6 | Lot 27

403-235-0012  
[southshore@allistongroup.ca](mailto:southshore@allistongroup.ca)  
[allistongroup.ca](http://allistongroup.ca)

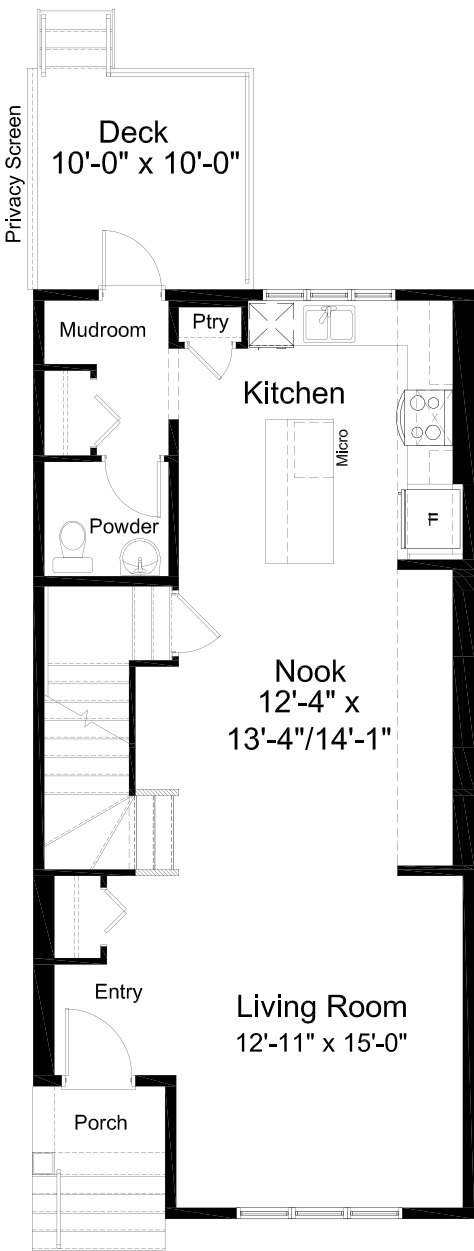


- Open Concept Living Area
- Spacious Kitchen Layout
- Luxury Vinyl Plank Flooring
- Luxury Vinyl Tile
- Stainless Steel Appliance Package
- Whirlpool Washer & Dryer Set
- Quartz Countertops Throughout
- Upper Floor Laundry
- Rear Deck
- Fully Fenced and Landscaped
- Detached Double Car Garage
- Triple Pane Windows
- NO CONDO FEES!

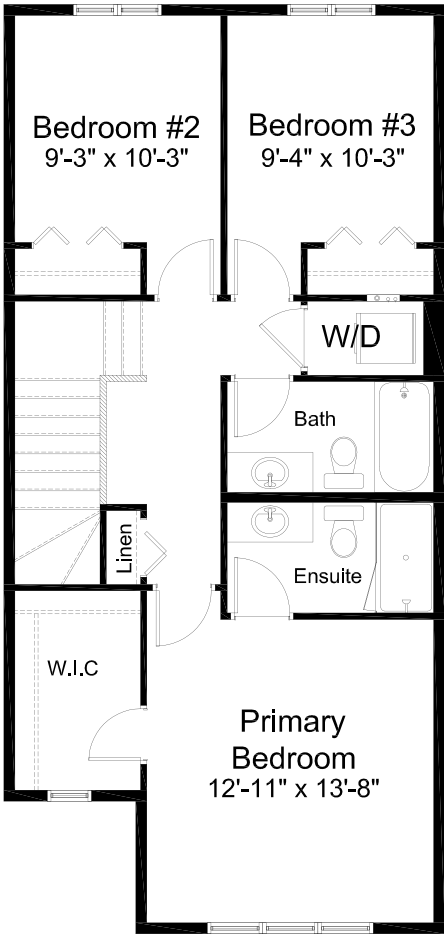
Edited: March 8, 2024  
The builder reserves the right to modify or change plans, specifications, features and prices without notice. Materials may be substituted with equivalent or better at the builder's sole discretion. All dimensions and sizes are approximate and are based on architectural measurements. As reverse, mirrored and/or flipped plans occur throughout the building, please see architectural plans if material to your decision to purchase. Renderings, furnishings and equipment shown are an artist's conception and are intended as a general reference only. Please see disclosure statement for specific offering details. E. & O.E.



ELEVATION



MAIN FLOOR 801 sq. ft.



UPPER FLOOR 801 sq. ft.

## WHITNEY

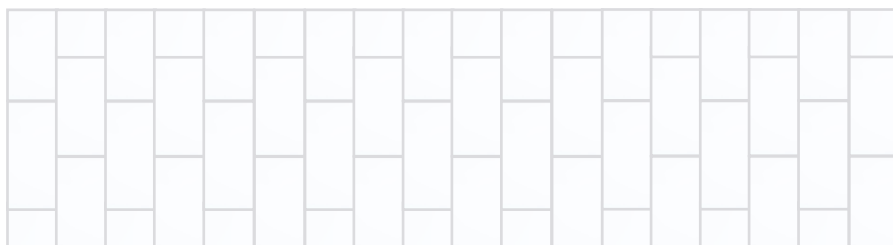
3 Bed | 2.5 Bath | 1,602 sq. ft.

207 South Shore Court  
Chestermere, Alberta  
Block 6 | Lot 27

1.



2.



3.



4.



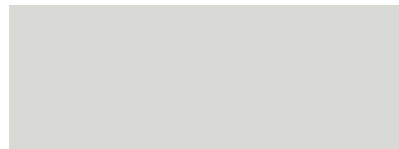
5.



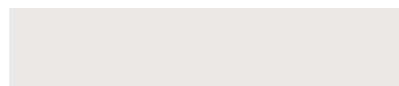
6.



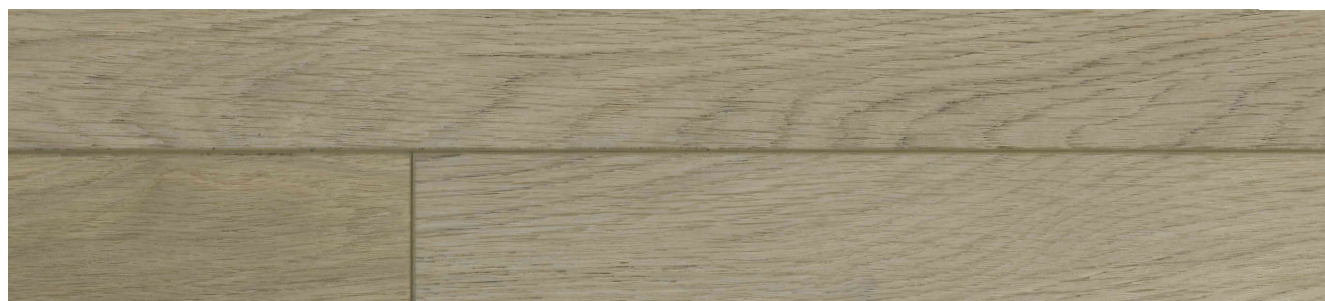
7.



8.



9.



### SELECTION DETAILS

- |   |   |
|---|---|
| 1. Kitchen & Bath Cabinets - Shaker - Euro White                | 6. Carpet - Mohawk SP025 03                               |
| 2. Wall Tile - Ceratec Tile - Essential Bianco - 3" x 6" Glossy | 7. Cloverdale Artisan Paint - Wall: CA028 Mist            |
| 3. Hardware - Richelieu - Metal Pull 7438 - Brushed Nickel      | 8. Cloverdale Artisan Paint - Trim: CA025 Standard White  |
| 4. Countertops - Silestone Quartz - Grey Expo                   | 9. Luxury Vinyl Plank - Taiga Arizona Series - Scottsdale |
| 5. Luxury Vinyl Tile - Taiga Stonewear+ Grey Silt 12" x 24"     |   |

**Note:** Products featured in our catalogue may differ from physical samples. Variations in colour, texture, and appearance can occur due to various factors, including differences in manufacturing batches, natural variations in materials, and the influence of lighting in photography and printing. We make every effort to ensure that our catalogue accurately represents our products, but we cannot guarantee an exact match to physical samples.

## WHITNEY

3 Bed | 2.5 Bath | 1,602 sq. ft.

207 South Shore Court  
Chestermere, Alberta  
Block 6 | Lot 27

10.



11.



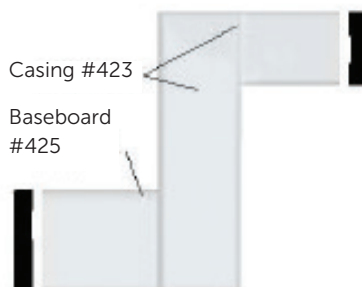
12.



13.



14.



15.



16.



17.



### SELECTION DETAILS

- |  |  |
|--|--|
| 10. Kitchen Sink - Blanco Essential U2 400008                | 14. Casing - Modern Baseboard & Casing                           |
| 11. Kitchen Faucet - Delta Osler 976LF 1H - Polished Chrome  | 15. Front Door Hardware - Weiser Troy Satin Chrome Collection    |
| 12. Bathroom Plumbing - Delta Wynne Collection - Chrome      | 16. Interior Door Hardware - Weiser Troy 26D Knob - Satin Chrome |
| 13. Lighting - Standard Lighting Package - Silver Collection | 17. Interior Door - Kingston 2 Panel Raised Door                 |

**Note:** Products featured in our catalogue may differ from physical samples. Variations in colour, texture, and appearance can occur due to various factors, including differences in manufacturing batches, natural variations in materials, and the influence of lighting in photography and printing. We make every effort to ensure that our catalogue accurately represents our products, but we cannot guarantee an exact match to physical samples.