

# QUICK POSSESSION



## HENSHAW

4 Bed | 3 Bath | 2,065 sq. ft.

**63 Belvedere Cres SE**  
**Calgary, Alberta**  
Block 11 | Lot 52

587-620-3645  
belvedere@allistongroup.ca  
268 belvedere drive se  
calgary, alberta

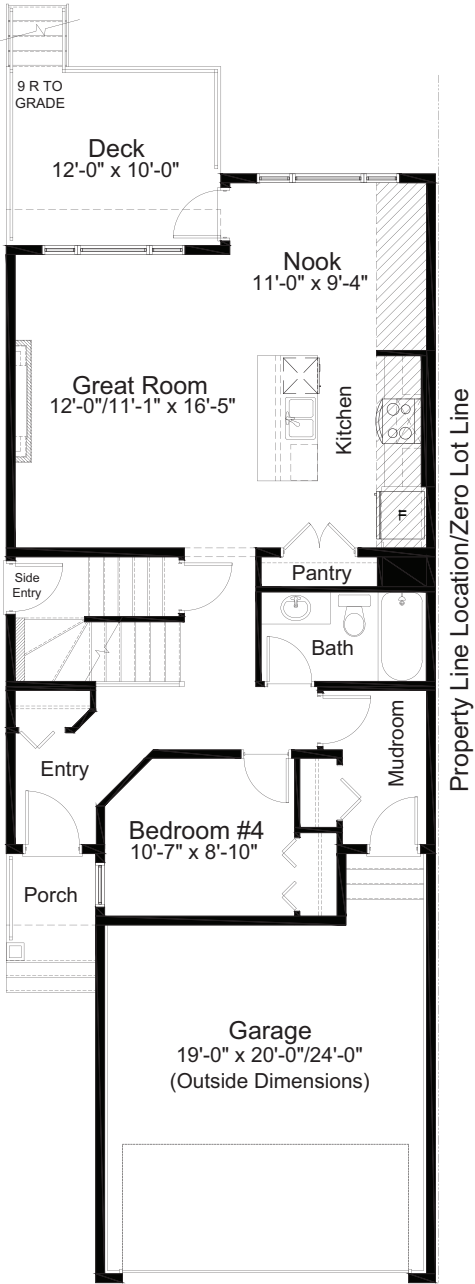


- Open Concept Living
- Stainless Steel Appliance Package
- Upgraded Gas Range
- Whirlpool Washer & Dryer Set
- Quartz Countertops Throughout
- Luxury Vinyl Plank Flooring
- Electric Fireplace in Great Room
- Main Floor Full Bath and 4<sup>th</sup> Bedroom
- Hazel Lighting Package
- Upper Floor Laundry Room
- Upper Floor Bonus Room
- Spacious 5-piece Ensuite
- Side Entry
- Triple Pane Windows
- Chrome Delta Plumbing Fixtures
- Hemlock Railing Design
- Attached Double Car Garage
- Rear Deck

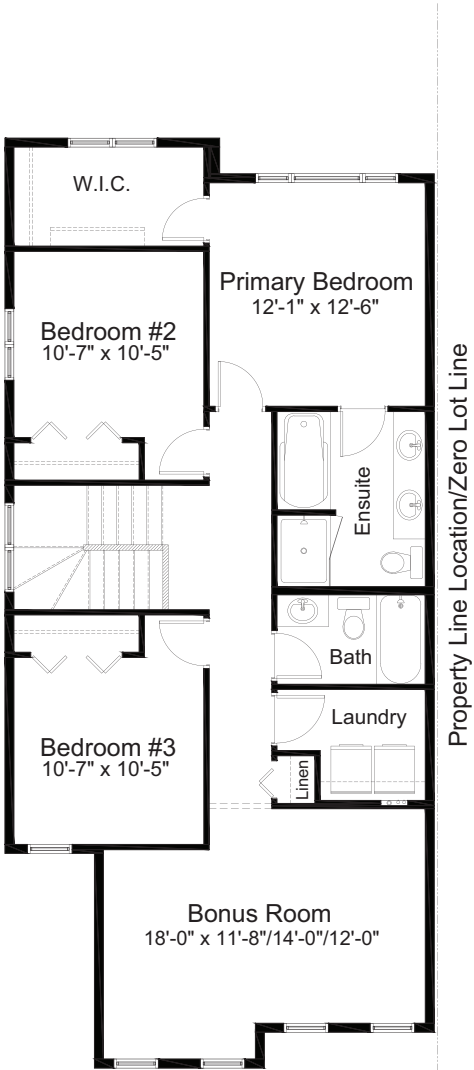
Edited: June 12, 2025  
The builder reserves the right to modify or change plans, specifications, features and prices without notice. Materials may be substituted with equivalent or better at the builder's sole discretion. All dimensions and sizes are approximate and are based on architectural measurements. As reverse, mirrored and/or flipped plans occur throughout the building, please see architectural plans if material to your decision to purchase. Renderings, furnishings and equipment shown are an artist's conception and are intended as a general reference only. Please see disclosure statement for specific offering details. E. & O.E.



CRAFTSMAN #1 ELEVATION



MAIN FLOOR  
920 sq. ft.



UPPER FLOOR  
1,145 sq. ft.

## Henshaw Craftsman #1

63 Belvedere Crescent SE

Block 11 Lot 52

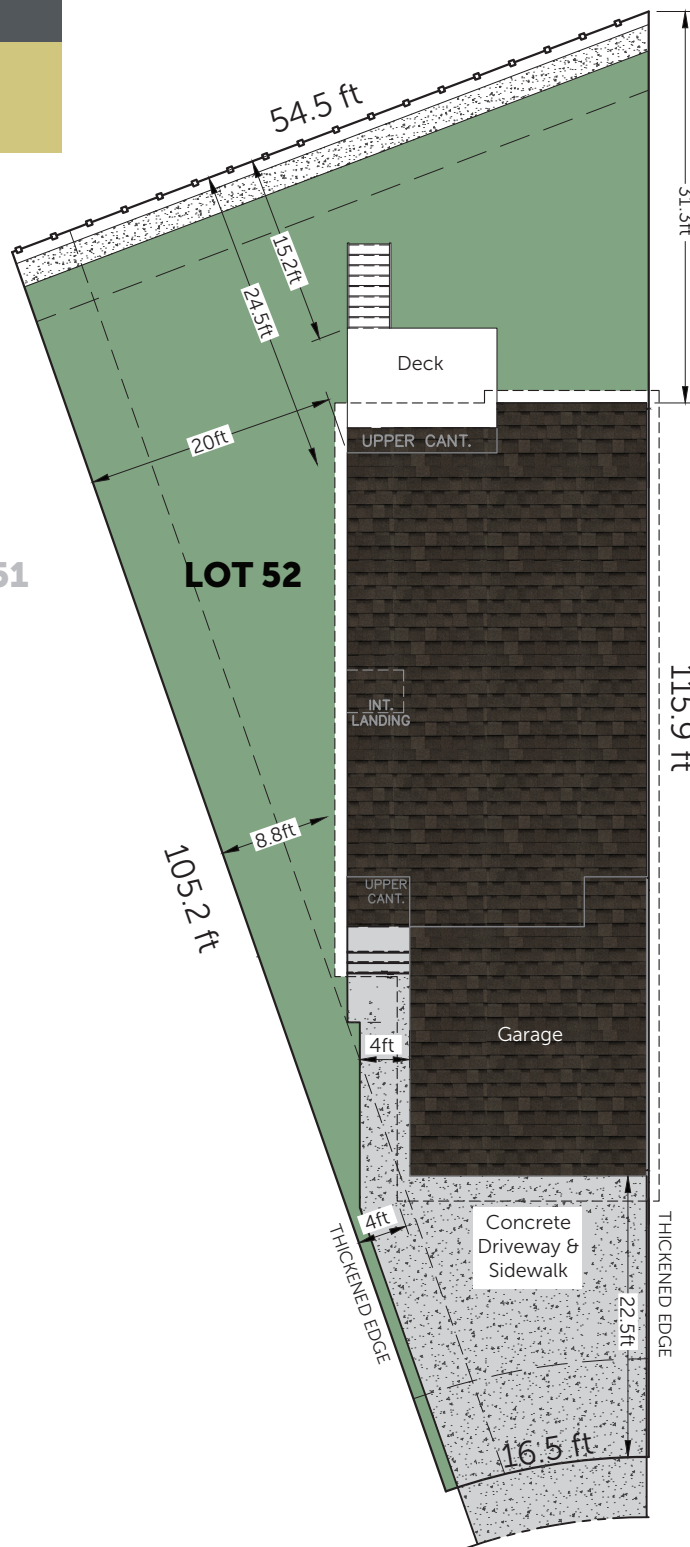


5.9ft Wood Screen Fence  
1.9ft CONCRETE SWALE  
5.9ft OVERLAND DRAINAGE ROW

LOT 51

LOT 52

LOT 53



7.8ft Utility R.O.W.

4.8FT BACK OF WALK

11.4FT LIP OF GUTTER

BELVEDERE CRESCENT S.E.

Edited: June 12, 2025

The builder reserves the right to modify or change plans, specifications, features and prices without notice. Materials may be substituted with equivalent or better at the builder's sole discretion. All dimensions and sizes are approximate and are based on architectural measurements. As reverse, mirrored and/or flipped plans occur throughout the building, please see architectural plans if material to your decision to purchase. Renderings, furnishings and equipment shown are an artist's conception and are intended as a general reference only. Please see disclosure statement for specific offering details. E. & O.E.

## HENSHAW

4 Bed | 3 Bath | 2,065 sq. ft.

63 Belvedere Crescent SE  
Calgary, Alberta  
Block 11 | Lot 52

1.



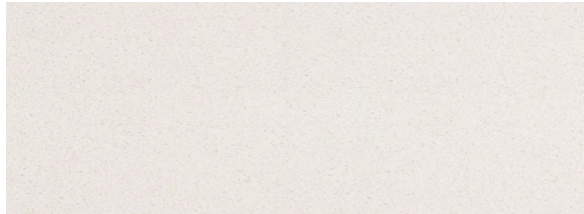
2.



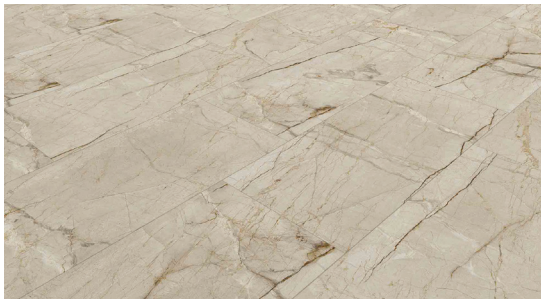
3.



4.



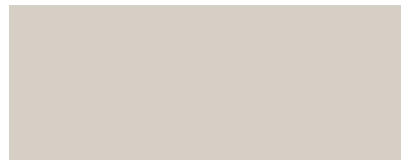
5.



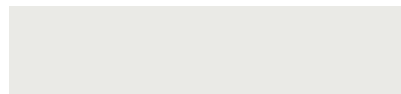
6.



7.



8.



9.



### SELECTION DETAILS

- |   |  |
|---|--|
| 1. Kitchen & Bath Cabinets - Shaker Style - Cotton              | 6. Carpet - Mohawk Tectonic - 829 Havana         |
| 2. Wall Tile - Ceratec Tile - Essential Greige Matte - 4" x 16" | 7. Cloverdale Artisan Paint - Wall: CA032 Smoky  |
| 3. Hardware - Richelieu - Metal Pull 7348 - Brushed Nickel      | 8. Cloverdale Artisan Paint - Trim: CA019 Summit |
| 4. Kitchen & Bath Countertops - Jadestone Quartz - Baffin Bay   | 9. Luxury Vinyl Plank - Unifloor - EC81105 Iris  |
| 5. Luxury Vinyl Tile - Unifloor - EC72938 Milano - 12" x 24"    |  |

Last Edited: June 12, 2025

**Note:** Products featured in our catalogue may differ from physical samples. Variations in colour, texture, and appearance can occur due to various factors, including differences in manufacturing batches, natural variations in materials, and the influence of lighting in photography and printing. We make every effort to ensure that our catalogue accurately represents our products, but we cannot guarantee an exact match to physical samples.



10.



11.



12.



13.



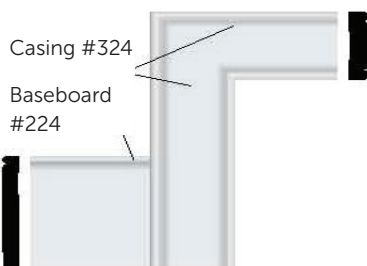
14.



15.



16.



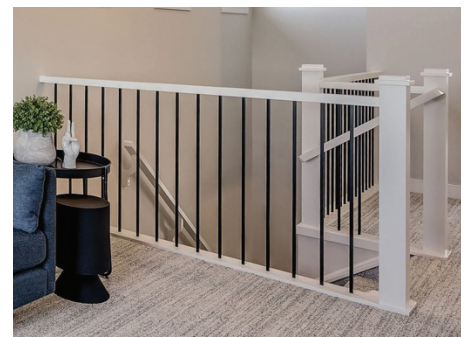
17.



18.



19.



## SELECTION DETAILS

- 10. Kitchen Sink - Blanco Essential U2 400008
- 11. Kitchen Faucet - Delta Osler 976LF 1H - Polished Chrome
- 12. Bathroom Faucet - Delta Wynne 534LF - Chrome
- 13. Bathroom Sink - Undermount American Standard Studio
- 14. Bathtub/Shower Trim - Delta Lahara Collection - Chrome

- 15. Lighting - Hazel Lighting Package - Silver
- 16. Casing - Transition Baseboard & Casing
- 17. Door Hardware - Weiser Halifax Round Rose Collection - Chrome
- 18. Interior Door - Kingston 2 Panel Raised Door
- 19. Hemlock Railing Design - Matte Black & CA019 Summit

Last Edited: June 12, 2025

**Note:** Products featured in our catalogue may differ from physical samples. Variations in colour, texture, and appearance can occur due to various factors, including differences in manufacturing batches, natural variations in materials, and the influence of lighting in photography and printing. We make every effort to ensure that our catalogue accurately represents our products, but we cannot guarantee an exact match to physical samples.