

QUICK POSSESSION



HENSHAW

4 Bed | 3 Bath | 2,065 sq. ft.

79 Belvedere Cres SE
Calgary, Alberta
Block 11 | Lot 48

587-620-3645
belvedere@allistongroup.ca
268 belvedere drive se
calgary, alberta



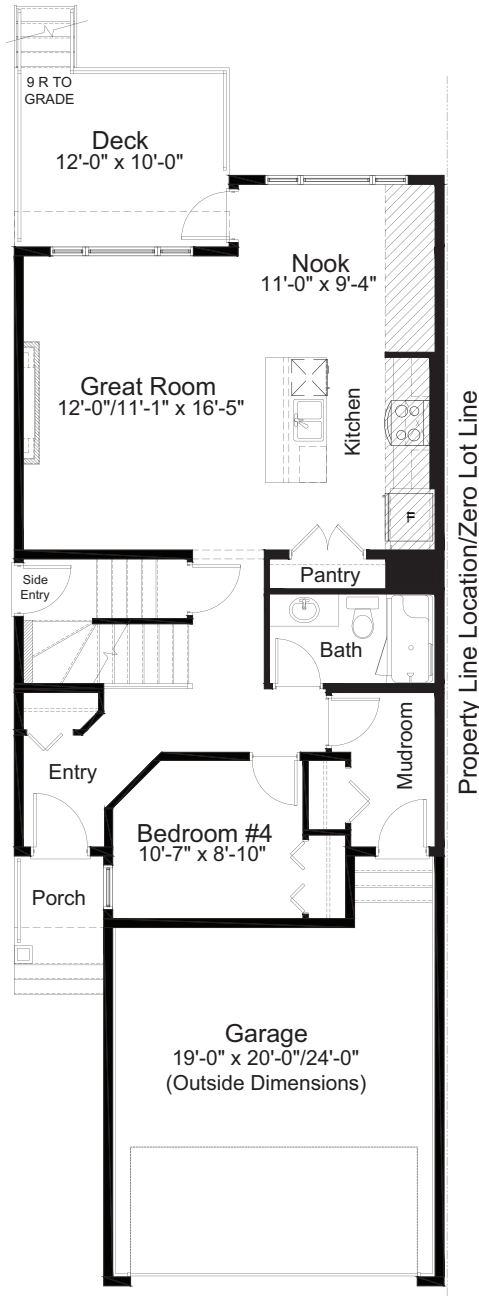
- Open Concept Living
- Stainless Steel Appliance Package
- Upgraded Gas Range
- Whirlpool Washer & Dryer Set
- Quartz Countertops Throughout
- Luxury Vinyl Plank Flooring
- Electric Fireplace in Great Room
- Main Floor Full Bath and 4th Bedroom
- Hazel Lighting Package
- Upper Floor Laundry Room
- Upper Floor Bonus Room
- Spacious 5-piece Ensuite
- Side Entry
- Triple Pane Windows
- Chrome Delta Plumbing Fixtures
- Hemlock Railing Design
- Attached Double Car Garage
- Rear Deck

Edited: June 12, 2025

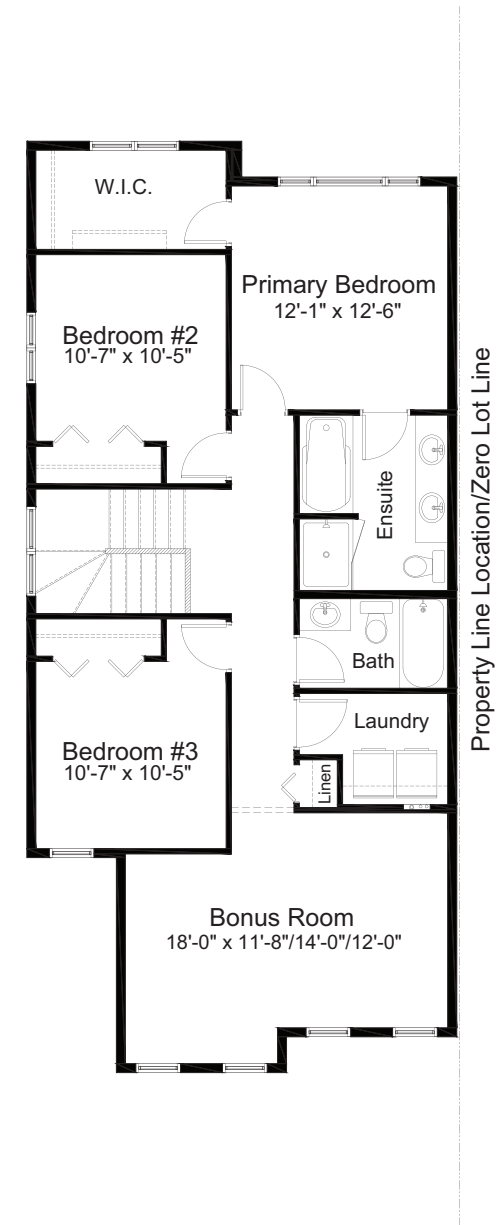
The builder reserves the right to modify or change plans, specifications, features and prices without notice. Materials may be substituted with equivalent or better at the builder's sole discretion. All dimensions and sizes are approximate and are based on architectural measurements. As reverse, mirrored and/or flipped plans occur throughout the building, please see architectural plans if material to your decision to purchase. Renderings, furnishings and equipment shown are an artist's conception and are intended as a general reference only. Please see disclosure statement for specific offering details. E. & O.E.



FARMHOUSE #2 ELEVATION



MAIN FLOOR
920 sq. ft.



UPPER FLOOR
1,145 sq. ft.

Henshaw Farmhouse #2

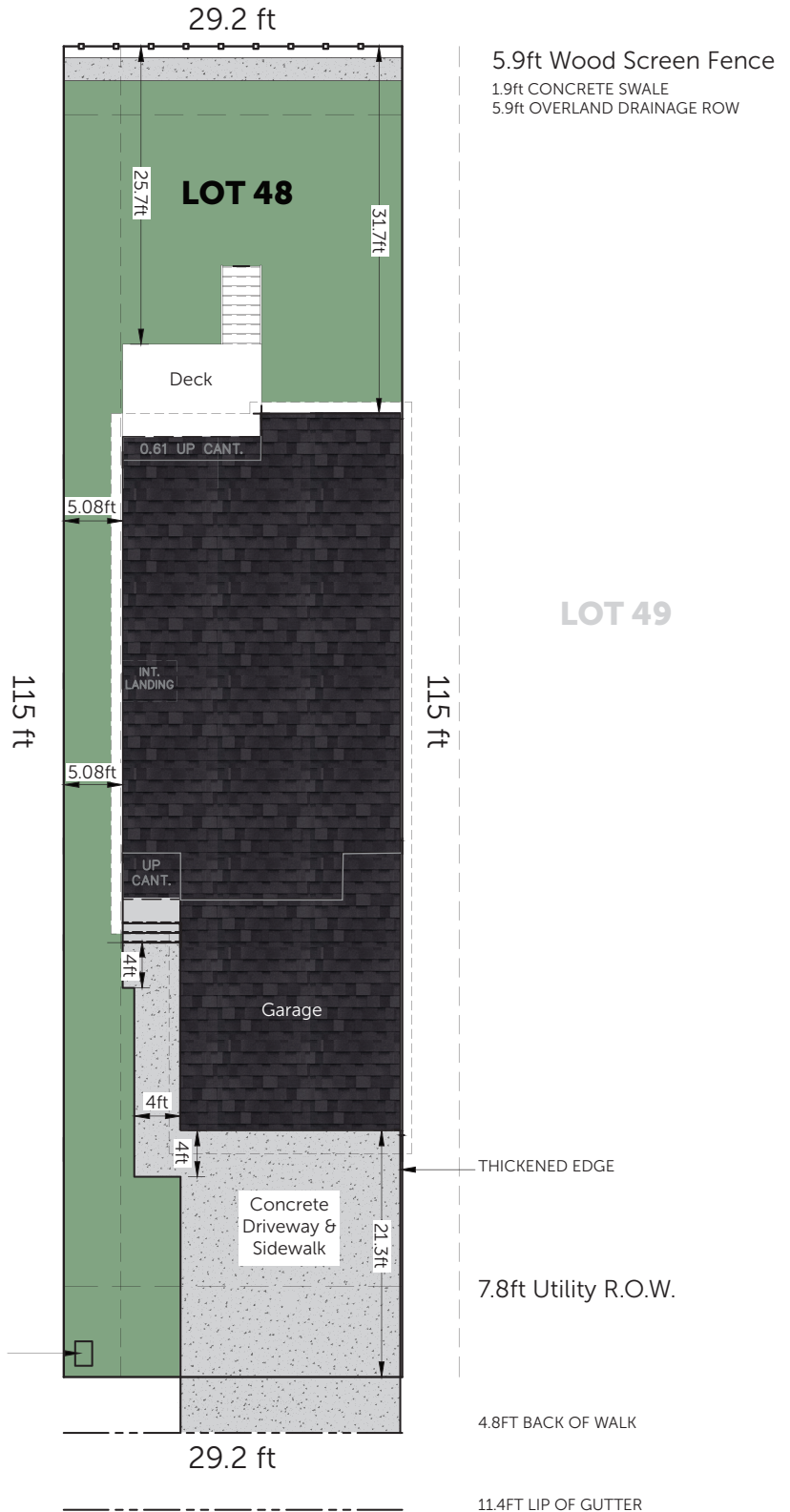
79 Belvedere Crescent SE

Block 11 Lot 48

FUTURE DEVELOPMENT



LOT 47



Shaw Pedestal

HENSHAW

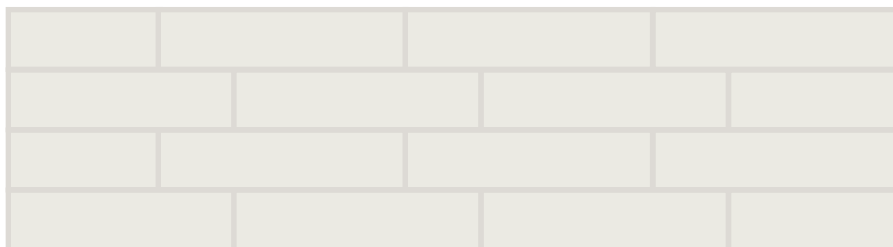
4 Bed | 3 Bath | 2,065 sq. ft.

79 Belvedere Crescent SE
Calgary, Alberta
Block 11 | Lot 48

1.



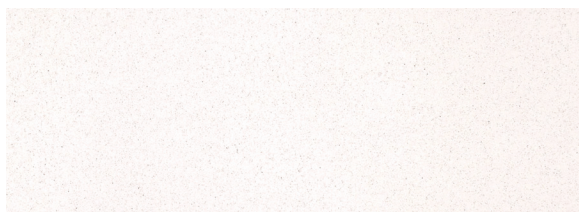
2.



3.



4.



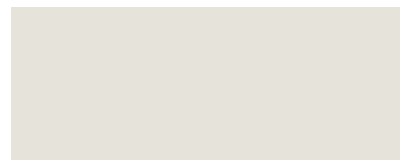
5.



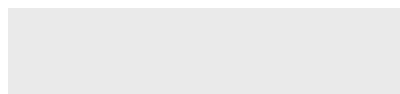
6.



7.



8.



9.



SELECTION DETAILS

- | | |
|--|--|
| 1. Kitchen & Bath Cabinets - Choose Slab or Shaker Style - Willa | 6. Carpet - Mohawk Tectonic - 749 Stony Glade |
| 2. Wall Tile - Ceratec Tile - Essential Bianco Matte - 4" x 16" | 7. Cloverdale Artisan Paint - Wall: CA020 Crystal |
| 3. Hardware - Richelieu - Metal Pull 7438 - Brushed Nickel | 8. Cloverdale Artisan Paint - Trim: CA025 Standard White |
| 4. Countertops - Jadestone Quartz - White Sands | 9. Luxury Vinyl Plank - Unifloor - EC81108 Carnation |
| 5. Luxury Vinyl Tile - Unifloor - EC72933 Classico Carrara 12" x 24" | |

Last Edited: June 12, 2025

Note: Products featured in our catalogue may differ from physical samples. Variations in colour, texture, and appearance can occur due to various factors, including differences in manufacturing batches, natural variations in materials, and the influence of lighting in photography and printing. We make every effort to ensure that our catalogue accurately represents our products, but we cannot guarantee an exact match to physical samples.

10.



11.



12.



13.



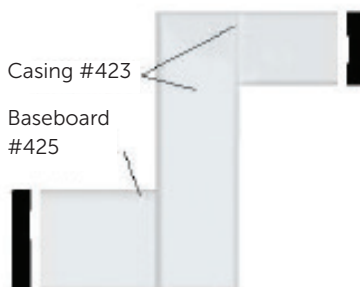
14.



15.



16.



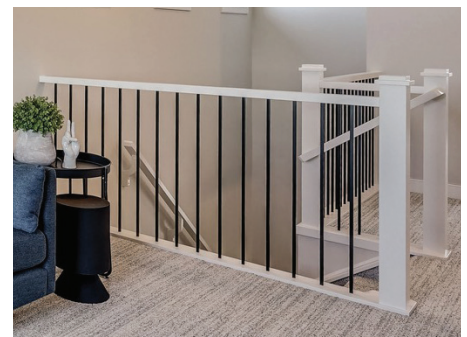
17.



18.



19.



SELECTION DETAILS

- 10. Kitchen Sink - Blanco Essential U2 400008
- 11. Kitchen Faucet - Delta Osler 976LF 1H - Polished Chrome
- 12. Bathroom Faucet - Delta Wynne 534LF - Chrome
- 13. Bathroom Sink - Undermount American Standard Studio
- 14. Bathtub/Shower Trim - Delta Lahara Collection - Chrome

- 15. Lighting - Hazel Lighting Package - Silver
- 16. Casing - Modern Baseboard & Casing
- 17. Door Hardware - Weiser Halifax Round Rose Collection - Chrome
- 18. Interior Door - Kingston 2 Panel Raised Door
- 19. Hemlock Railing Design - Matte Black & CA019 Summit

Last Edited: June 12, 2025

Note: Products featured in our catalogue may differ from physical samples. Variations in colour, texture, and appearance can occur due to various factors, including differences in manufacturing batches, natural variations in materials, and the influence of lighting in photography and printing. We make every effort to ensure that our catalogue accurately represents our products, but we cannot guarantee an exact match to physical samples.