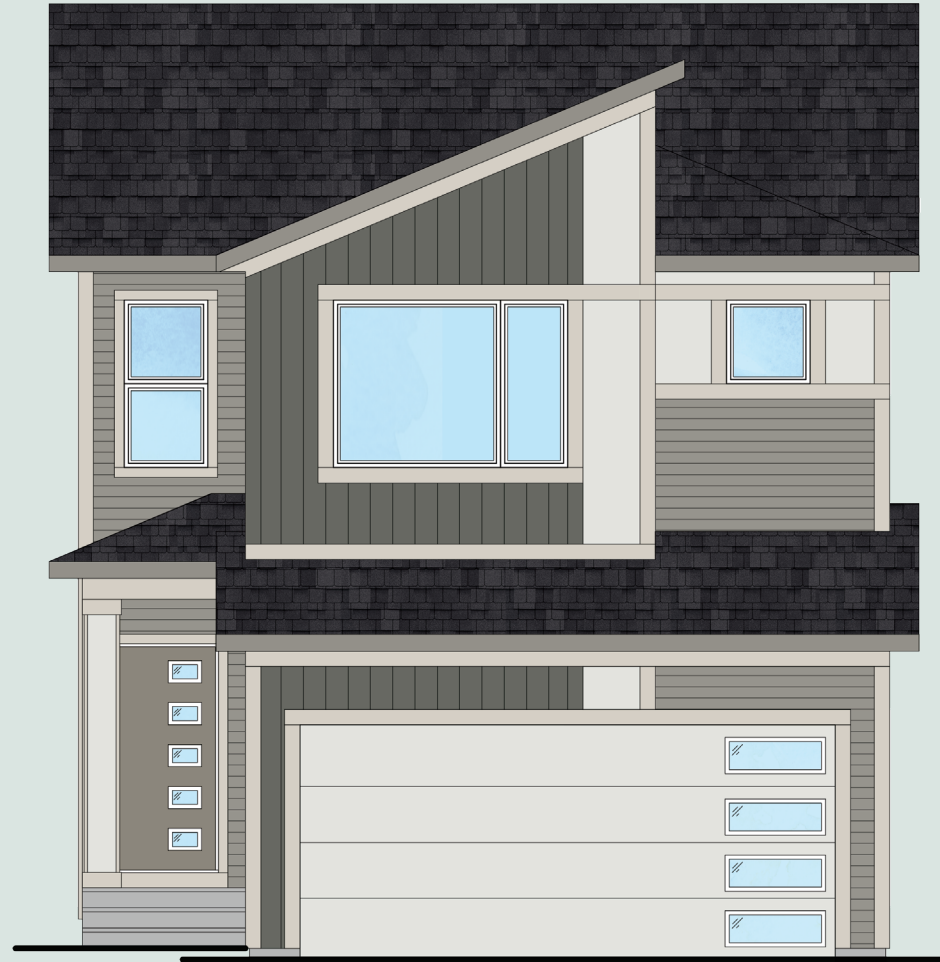


# QUICK POSSESSION



*Artist's rendering.  
The elevation and colours of the final home may differ from those shown.*

**CICELY**

3 Bed | 3 Bath | 2,052 sq. ft.

**95 Belvedere Cres SE  
Calgary, Alberta**  
Block 11 | Lot 44

587-620-3645  
belvedere@allistongroup.ca  
268 belvedere drive se  
calgary, alberta

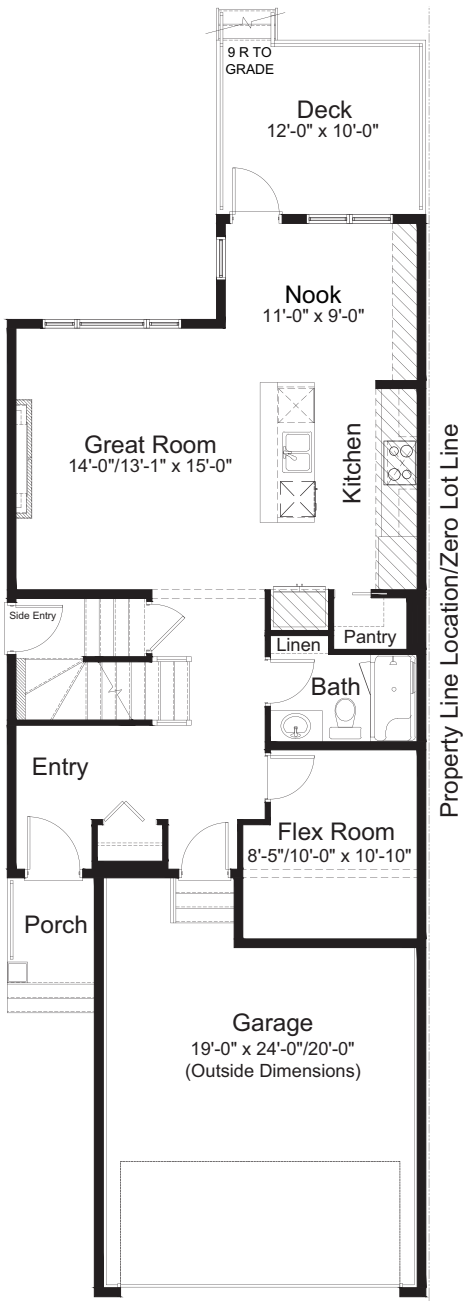


- Open Concept Living
- Gourmet Kitchen Appliance Package
- Whirlpool Washer & Dryer Set
- Quartz Countertops Throughout
- Luxury Vinyl Plank Flooring
- Electric Fireplace in Great Room
- Main Floor Full Bath
- Main Floor Flex Room
- Hazel Lighting Package
- Upper Floor Laundry Room
- Upper Floor Loft
- Spacious 5-piece Ensuite
- Side Entry
- Bahia Railing Design
- Triple Pane Windows
- Chrome Delta Plumbing Fixtures
- Attached Double Car Garage
- Rear Deck

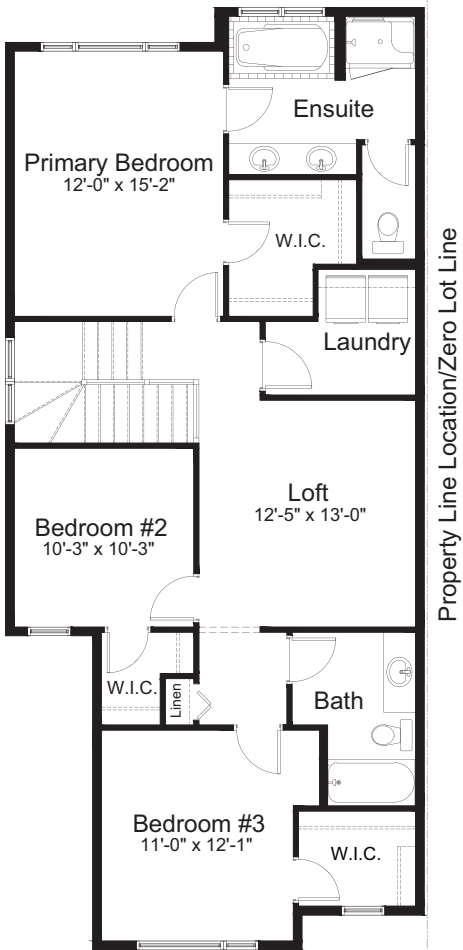
Edited: August 18, 2025  
The builder reserves the right to modify or change plans, specifications, features and prices without notice. Materials may be substituted with equivalent or better at the builder's sole discretion. All dimensions and sizes are approximate and are based on architectural measurements. As reverse, mirrored and/or flipped plans occur throughout the building, please see architectural plans if material to your decision to purchase. Renderings, furnishings and equipment shown are an artist's conception and are intended as a general reference only. Please see disclosure statement for specific offering details. E. & O.E.



URBAN #1 ELEVATION



MAIN FLOOR  
884 sq. ft.



UPPER FLOOR  
1,168 sq. ft.