

alliston

AT HOME



POPLAR

features

- Open Concept Living Area
- Luxury Vinyl Plank Flooring
- Luxury Vinyl Tile
- Stainless Steel Appliance Package
- Quartz Countertops Throughout
- Dropped Front Entry
- Upper Floor Laundry Room
- Mudroom
- Spacious Ensuite and W.I.C
- Main Floor Pocket Office
- Upper Floor Loft
- Attached Double Car Garage
- Optional Side Entry
- Triple Pane Windows

2,323 sq. ft.

3 Bed

2.5 Bath

Tillotson

587-757-8503

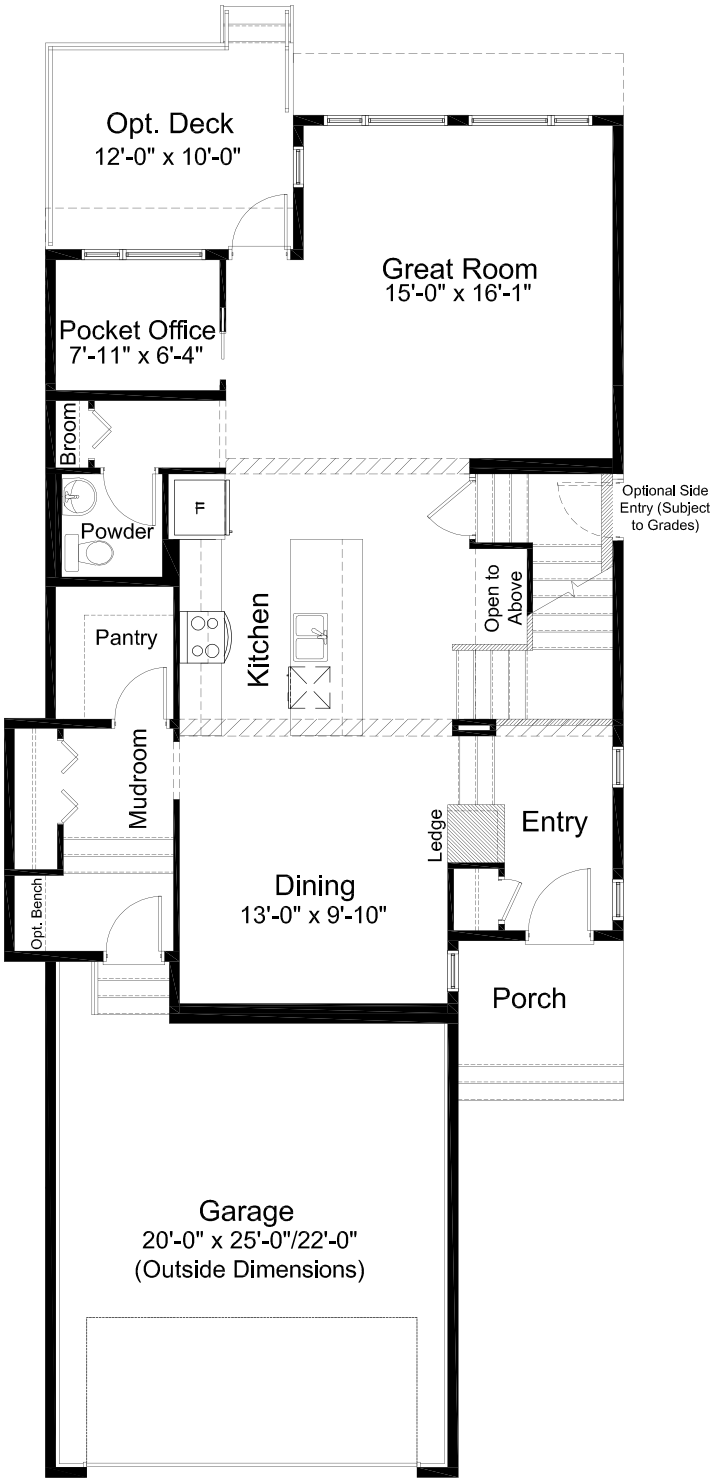
tillotson@allistongroup.ca



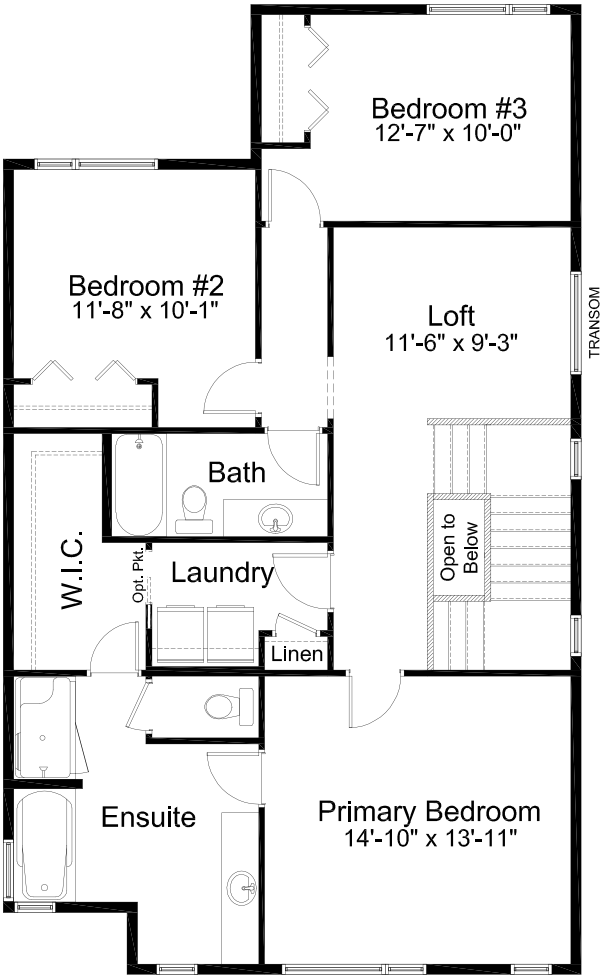
POPLAR

3 Bed 2.5 Bath 2,323 sq. ft.

standard plan



MAIN FLOOR 1,127 sq. ft.



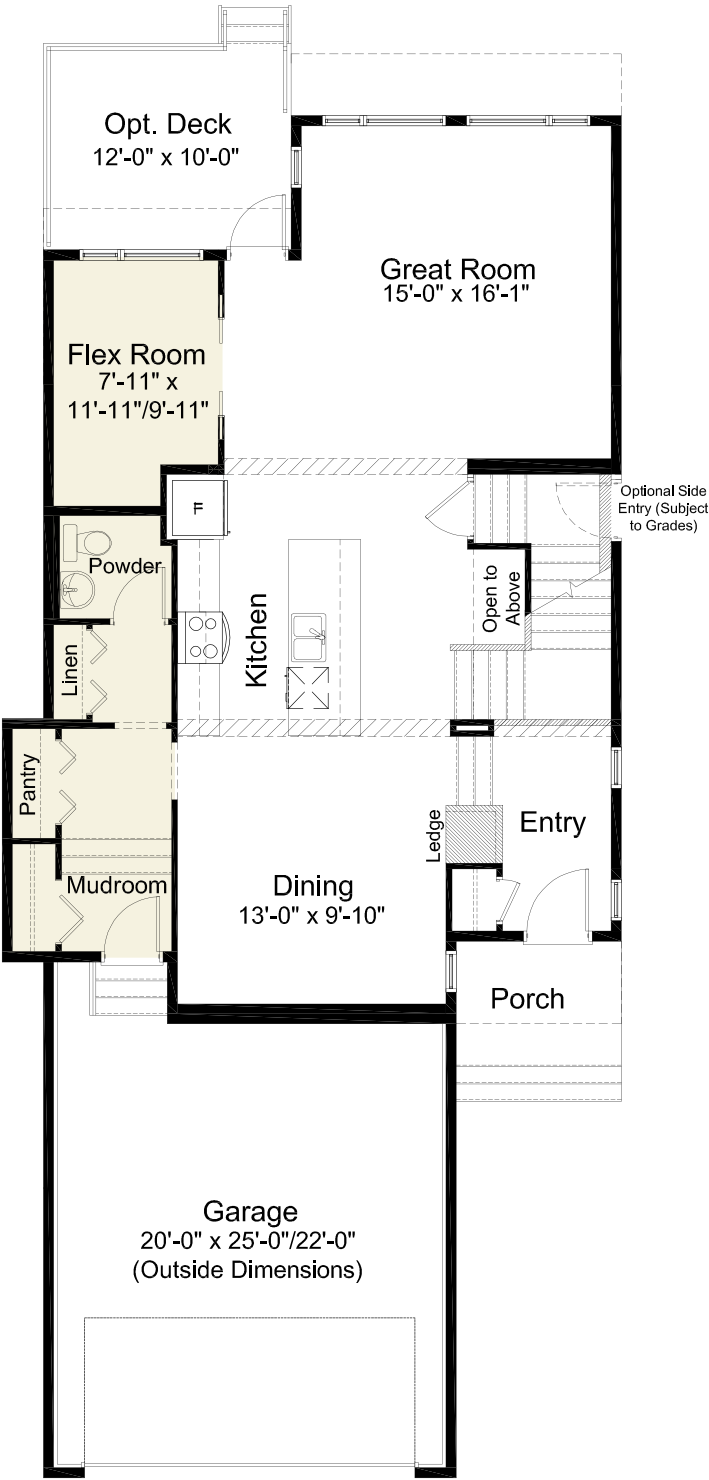
UPPER FLOOR 1,196 sq. ft.



POPLAR

3 Bed 2.5 Bath 2,323 sq. ft.

pre-planned options



Flex Room Option
1,127 sq. ft.



POPLAR

3 Bed 2.5 Bath 2,323 sq. ft.



MODERN URBAN ELEVATION