

alliston
AT HOME

QUICK POSSESSION

LEASE BACK OPPORTUNITY



Artist's rendering. The elevation and colours of the final home may differ from those shown.

HAWTHORN

7 Bed | 5.5 Bath | 3,112 sq. ft. + 888 sq. ft.

973 South Shore Terrace
Chestermere, Alberta
Block 9 | Lot 9

403-235-0012
southshore@allistongroup.ca
allistongroup.ca

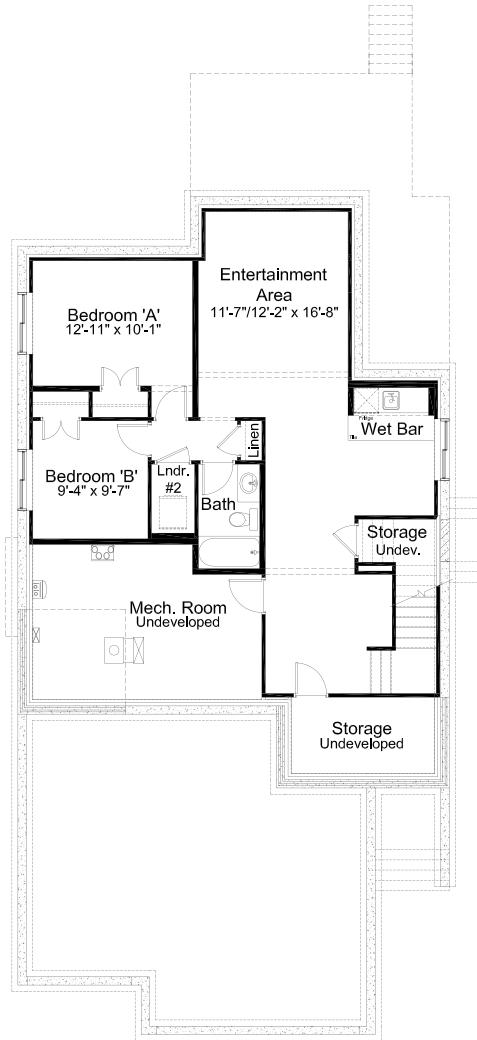


- Open Concept Living Area
- Designed for Multi-Generational Living
- Engineered Hardwood Flooring
- Ceramic Tile
- Gourmet Kitchen Appliance Package
- Spice Kitchen & Walk-in Pantry
- Quartz Countertops Throughout
- Main Floor Bedroom w/ 3-piece Ensuite
- Mudroom w/ Lockers
- Open-to-Above Great Room
- Electric Fireplace in Great Room
- Large Rear Deck and Covered Deck
- Upper Floor Loft
- Luxurious 5-piece Ensuite
- Spacious Primary W.I.C.
- Upper Floor Laundry Room
- Attached Triple Car Garage
- Side Entry
- Triple Pane Windows
- Developed Basement
- 2nd Laundry in Basement Development
- Basement Wet Bar

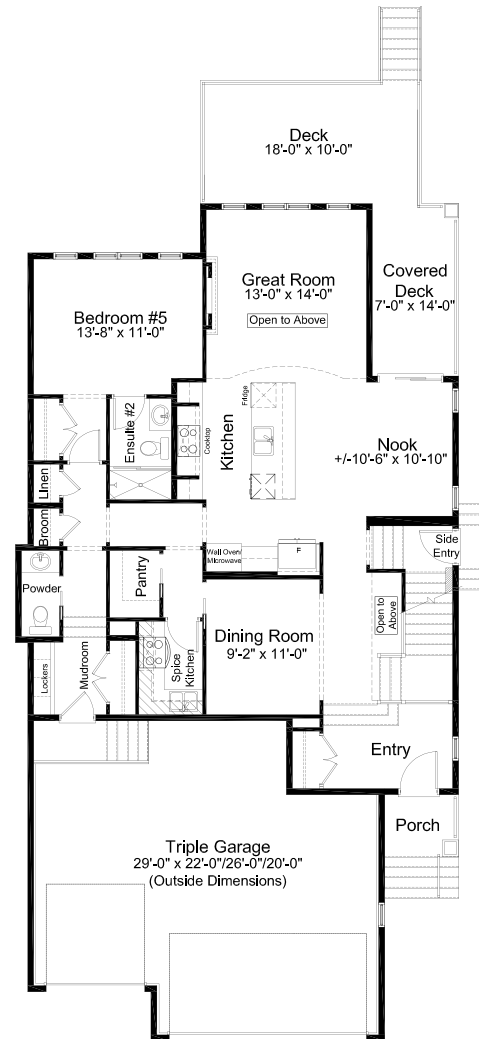
Edited: December 15, 2025
 The builder reserves the right to modify or change plans, specifications, features and prices without notice. Materials may be substituted with equivalent or better at the builder's sole discretion. All dimensions and sizes are approximate and are based on architectural measurements. As reverse, mirrored and/ or flipped plans occur throughout the building, please see architectural plans if material to your decision to purchase. Renderings, furnishings and equipment shown are an artist's conception and are intended as a general reference only. Please see disclosure statement for specific offering details. E. & O.E.



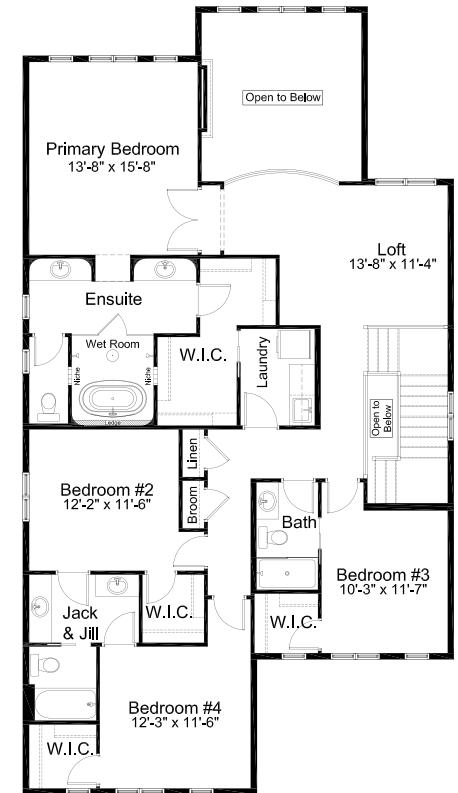
PRAIRIE ELEVATION



DEVELOPED BASEMENT 888 sq. ft.



MAIN FLOOR 1,408 sq. ft.



UPPER FLOOR 1,704 sq. ft.