

QUICK POSSESSION



Artist's rendering. The elevation and colours of the final home may differ from those shown.

BERKELEY

3 Bed | 2.5 Bath | 2,161 sq. ft.

10 Bridges Way
Langdon, Alberta
Block 13 | Lot 22

403-371-8810
bridges@allistongroup.ca
allistongroup.ca



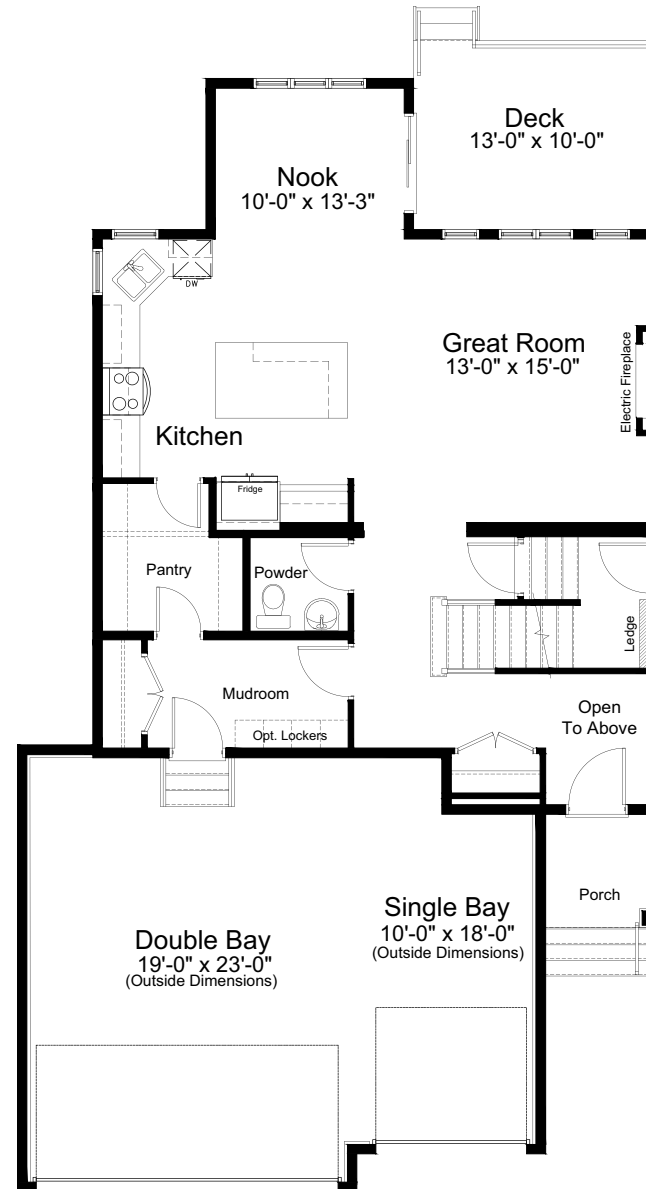
- Open Concept Living Area
- Open-To-Above Entry
- Luxury Vinyl Plank Flooring
- Luxury Vinyl Tile
- Stainless Steel Appliance Package
- Quartz Countertops Throughout
- Walk-Thru Kitchen Pantry
- Spacious Ensuite and W.I.C.
- Electric Fireplace in Great Room
- Upper Floor Bonus Room
- Upper Floor Laundry
- Side Entry
- Rear Deck
- Triple Pane Windows
- Attached Triple Car Garage

Edited: February 17, 2026

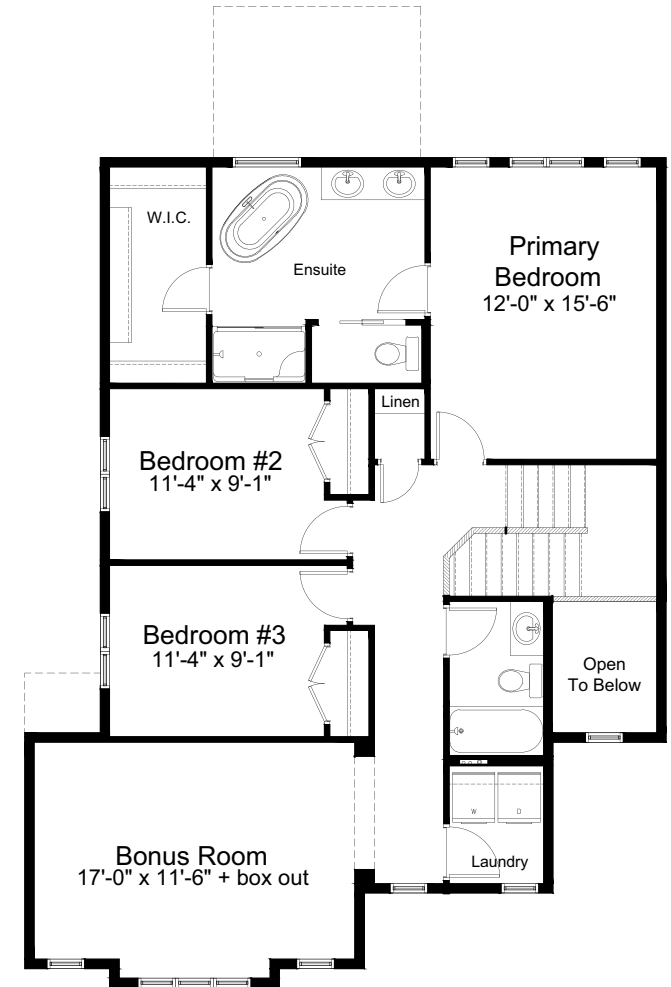
The builder reserves the right to modify or change plans, specifications, features and prices without notice. Materials may be substituted with equivalent or better at the builder's sole discretion. All dimensions and sizes are approximate and are based on architectural measurements. As reverse, mirrored and/or flipped plans occur throughout the building, please see architectural plans if material to your decision to purchase. Renderings, furnishings and equipment shown are an artist's conception and are intended as a general reference only. Please see disclosure statement for specific offering details. E. & O.E.



FARMHOUSE ELEVATION



MAIN FLOOR 962 sq. ft.



UPPER FLOOR 1,199 sq. ft.