

alliston
AT HOME

QUICK POSSESSION



Artist's rendering. The elevation and colours of the final home may differ from those shown.

DOGWOOD

3 Bed | 2.5 Bath | 1,375 sq. ft.

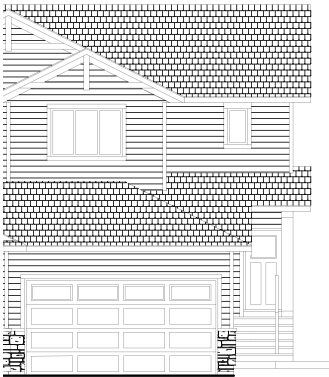
**320 Edgefield Close
Strathmore, Alberta**
Block 10 | Lot 29

403-371-8810
edgefield@allistongroup.ca
allistongroup.ca

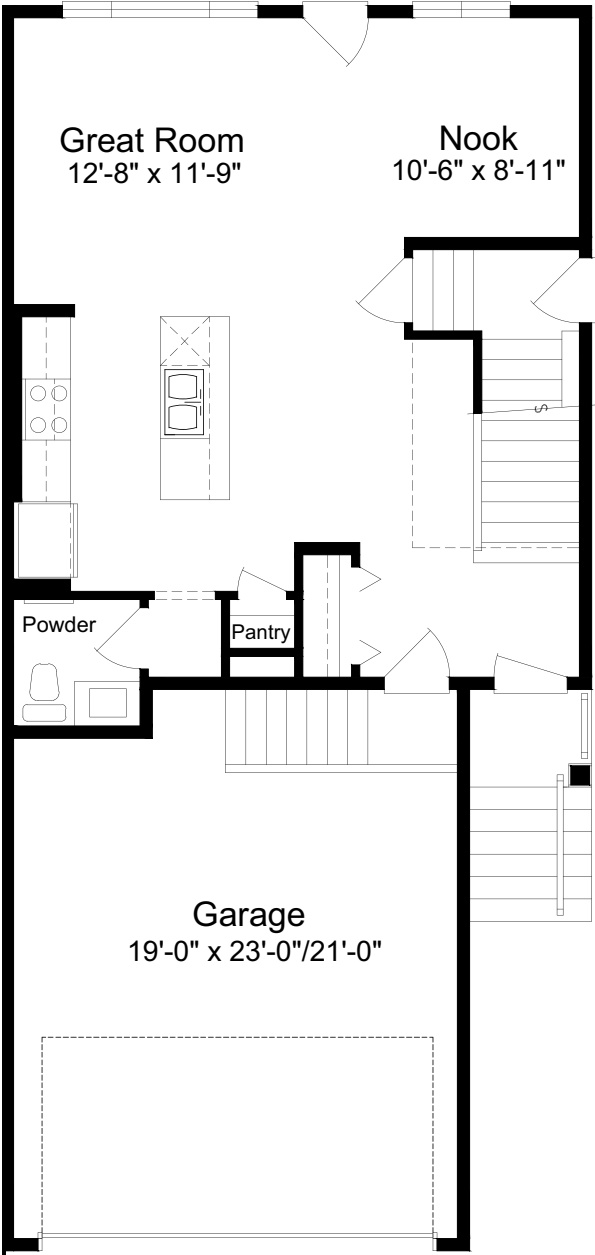

STRATHMORE

- Open Concept Living Area
- Open-to-Below Upper Floor
- Luxury Vinyl Plank Flooring
- Luxury Vinyl Tile
- Stainless Steel Appliance Package
- Quartz Countertops Throughout
- Upper Floor Laundry
- Side Entry
- Attached Double Car Garage
- Triple Pane Windows

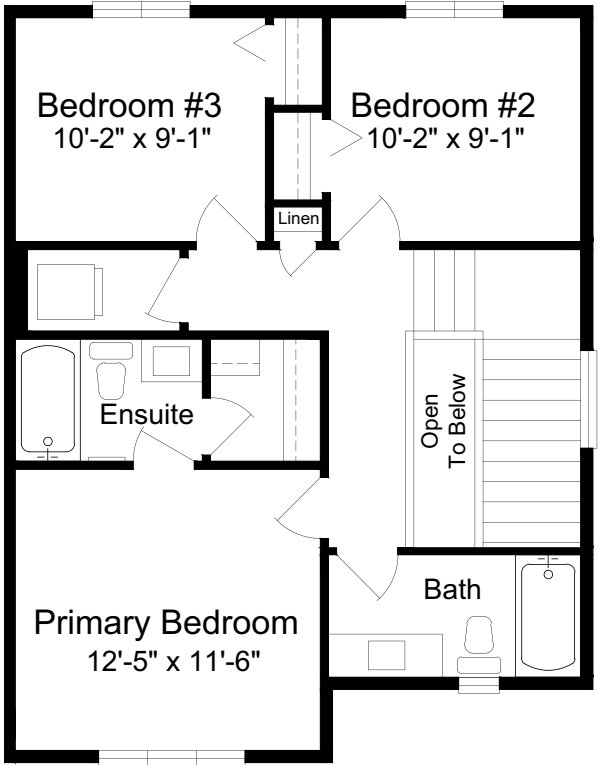
Edited: February 17, 2026
The builder reserves the right to modify or change plans, specifications, features and prices without notice. Materials may be substituted with equivalent or better at the builder's sole discretion. All dimensions and sizes are approximate and are based on architectural measurements. As reverse, mirrored and/or flipped plans occur throughout the building, please see architectural plans if material to your decision to purchase. Renderings, furnishings and equipment shown are an artist's conception and are intended as a general reference only. Please see disclosure statement for specific offering details. E. & O.E.



ELEVATION



MAIN FLOOR 684 sq. ft.



UPPER FLOOR 691 sq. ft.