



3 Bed

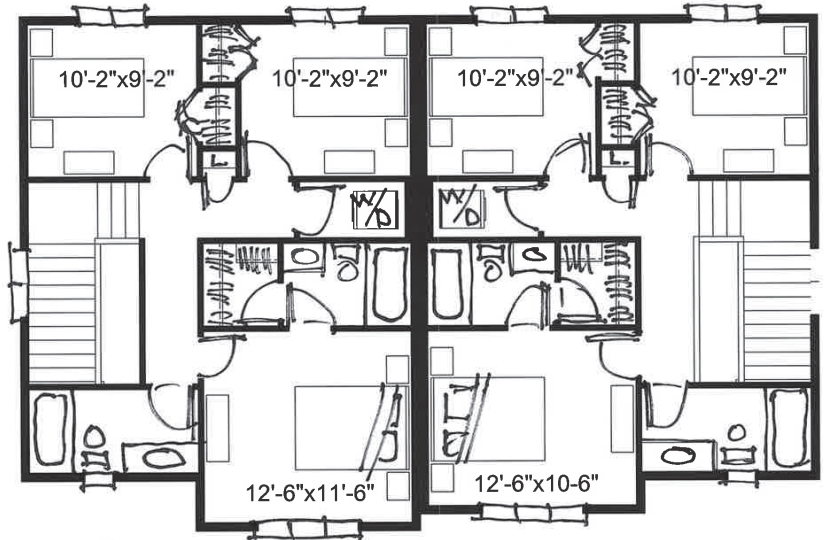
2.5 Bath

1,377 sq. ft. & 1,363 sq. ft.

DOGWOOD 1

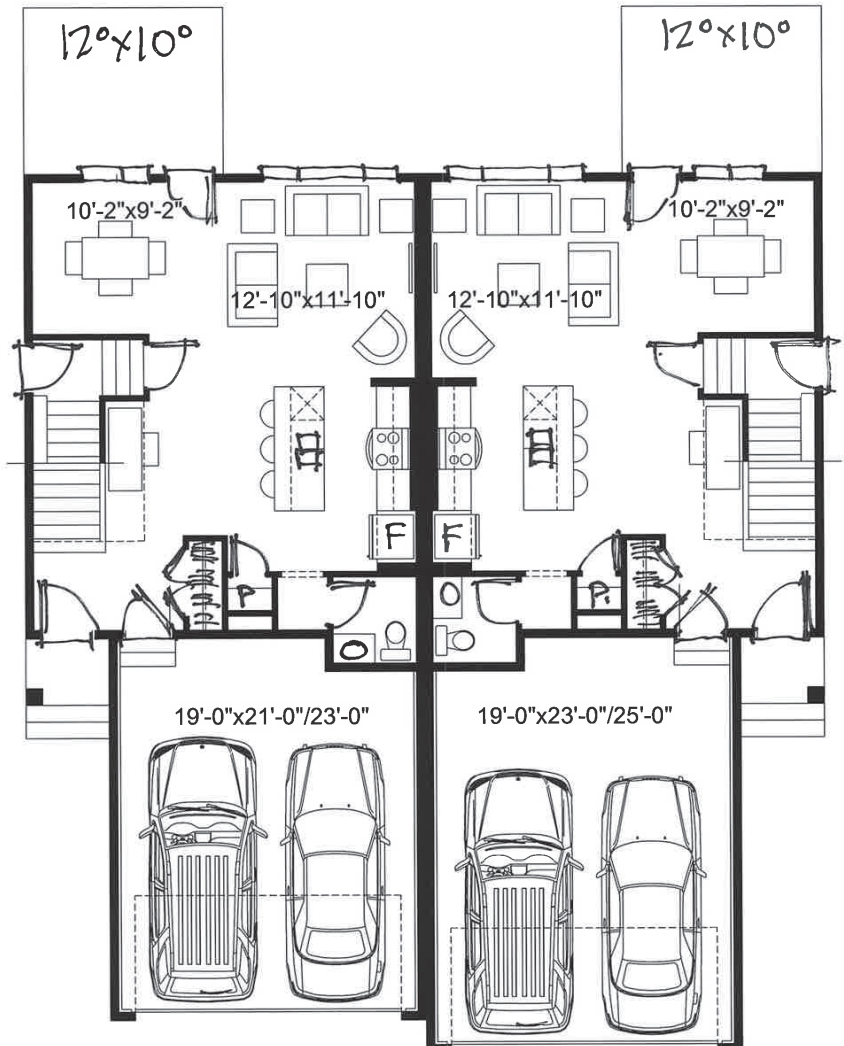
1,377 total sq. ft.

1,363 total sq. ft.



UPPER FLOOR

UPPER FLOOR



MAIN FLOOR

MAIN FLOOR

features

- Open Concept Living Area
- Central Kitchen Layout
- Luxury Vinyl Plank Flooring
- Luxury Vinyl Tile Flooring
- Stainless Steel Appliance Package
- Quartz Countertops Throughout
- Luxurious Ensuite
- Spacious Primary W.I.C.
- Upper Floor Laundry
- Rear Deck
- Attached Double Car Garage
- Triple Pane Windows

403-371-8810

edgefield@allistongroup.ca

alliston
AT HOME

Edgefield
STRATHMORE

Edited: March 27, 2026

The builder reserves the right to modify or change plans, specifications, features and prices without notice. Materials may be substituted with equivalent or better at the builder's sole discretion. All dimensions and sizes are approximate and are based on architectural measurements. As reverse, mirrored and/or flipped plans occur throughout the building, please see architectural plans if material to your decision to purchase. Renderings, furnishings and equipment shown are an artist's conception and are intended as a general reference only. Please see disclosure statement for specific offering details. E. & O.E.