



3 Bed

2.5 Bath

1,514 sq. ft.

REDWOOD 3

features

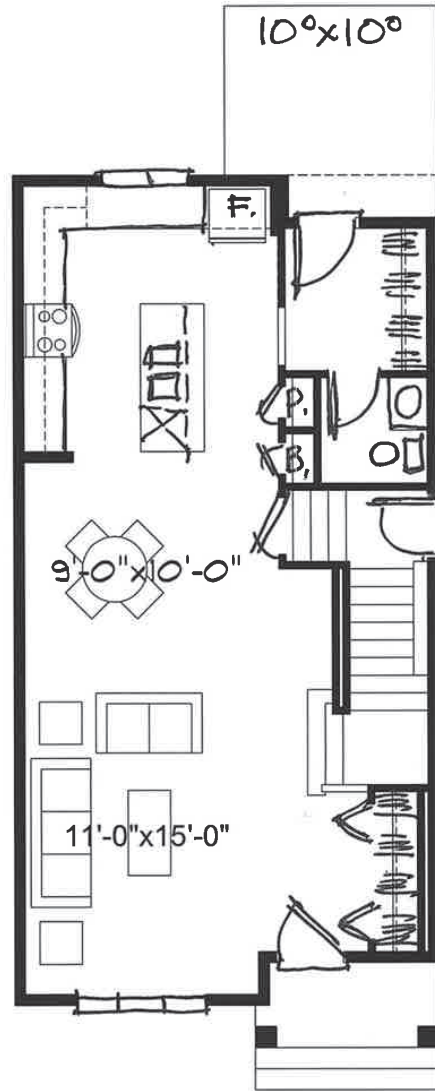
- Open Concept Living Area
- Spacious Kitchen Layout
- Luxury Vinyl Plank Flooring
- Luxury Vinyl Tile Flooring
- Stainless Steel Appliance Package
- Quartz Countertops Throughout
- Ample Primary W.I.C.
- Bright Ensuite
- Upper Floor Laundry
- Rear Deck
- Side Entry
- Triple Pane Windows

403-371-8810

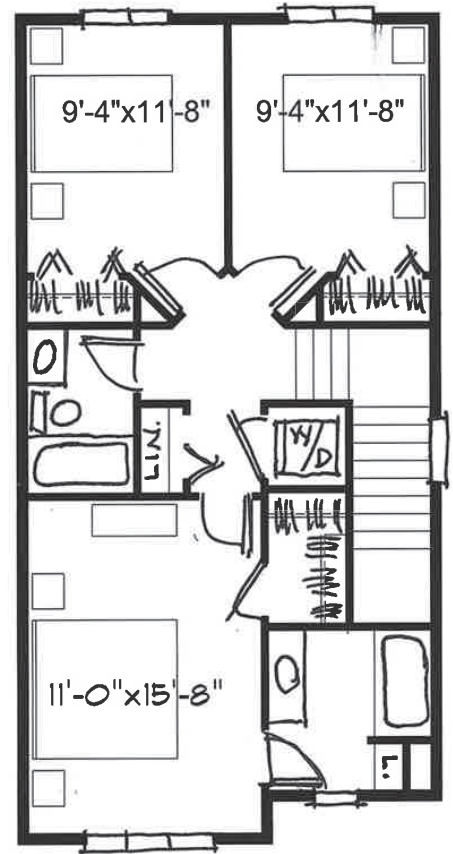
edgefield@allistongroup.ca

alliston
AT HOME

Edgefield
STRATHMORE



MAIN FLOOR



UPPER FLOOR

Edited: April 9, 2026

The builder reserves the right to modify or change plans, specifications, features and prices without notice. Materials may be substituted with equivalent or better at the builder's sole discretion. All dimensions and sizes are approximate and are based on architectural measurements. As reverse, mirrored and/or flipped plans occur throughout the building, please see architectural plans if material to your decision to purchase. Renderings, furnishings and equipment shown are an artist's conception and are intended as a general reference only. Please see disclosure statement for specific offering details. E. & O.E.