

# QUICK POSSESSION



*Artist's rendering. The elevation and colours of the final home may differ from those shown.*

## MAPLE

3 Bed | 2.5 Bath | 1,803 sq. ft.

462 South Shore Drive  
Chestermere, Alberta  
Block 8 | Lot 19

403-235-0012  
southshore@allistongroup.ca  
allistongroup.ca

# MAPLE

3 Bed

2.5 Bath

1,803 sq. ft.

462 South Shore Drive

Block 8 | Lot 19

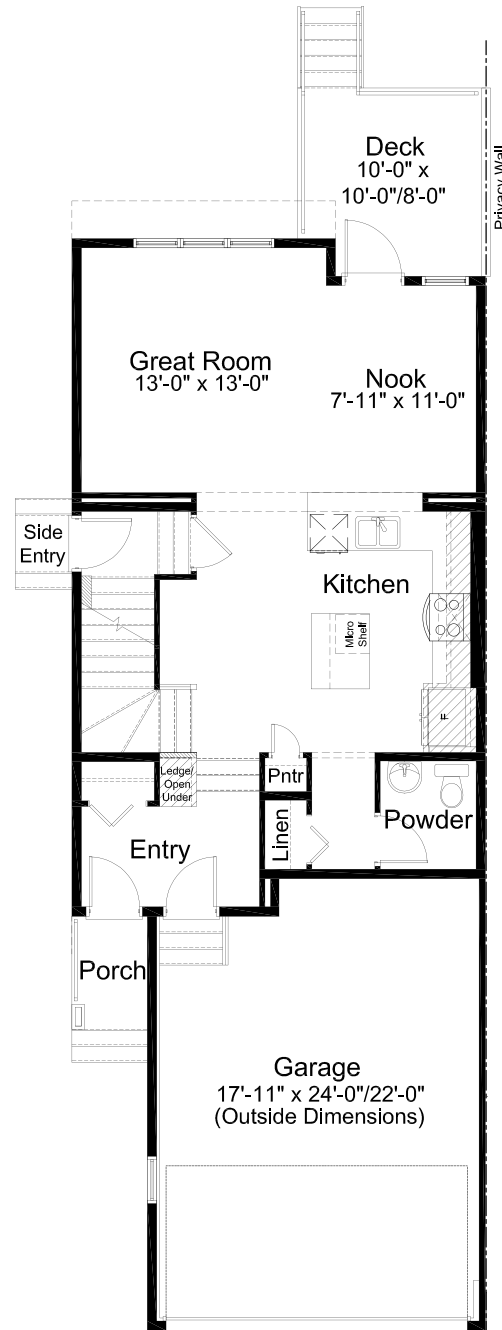
- Open Concept Living Area
- Luxury Vinyl Plank Flooring
- Luxury Vinyl Tile
- Stainless Steel Appliance Package
- Whirlpool Washer & Dryer Set
- Central Kitchen Layout
- Quartz Countertops Throughout
- 4-piece Ensuite & W.I.C.
- Glass Railing Design
- Upper Floor Laundry
- Upper Floor Loft
- Rear Deck
- Side Entry
- Attached Double Car Garage
- Triple Pane Windows

Edited: October 10, 2025

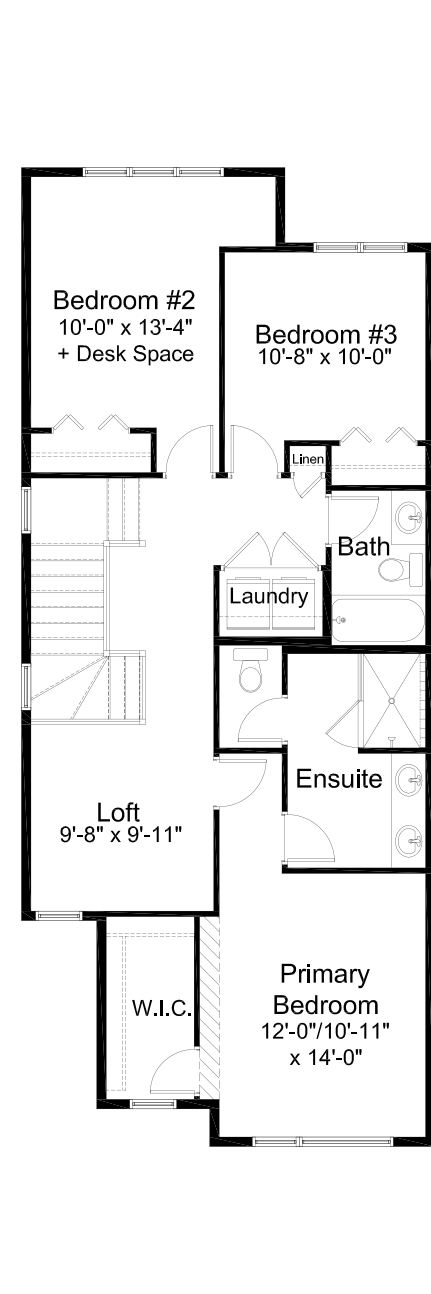
The builder reserves the right to modify or change plans, specifications, features and prices without notice. Materials may be substituted with equivalent or better at the builder's sole discretion. All dimensions and sizes are approximate and are based on architectural measurements. As reverse, mirrored and/or flipped plans occur throughout the building, please see architectural plans if material to your decision to purchase. Renderings, furnishings and equipment shown are an artist's conception and are intended as a general reference only. Please see disclosure statement for specific offering details. E. & O.E.



ELEVATION



MAIN FLOOR 753 sq. ft.



UPPER FLOOR 1,050 sq. ft.